



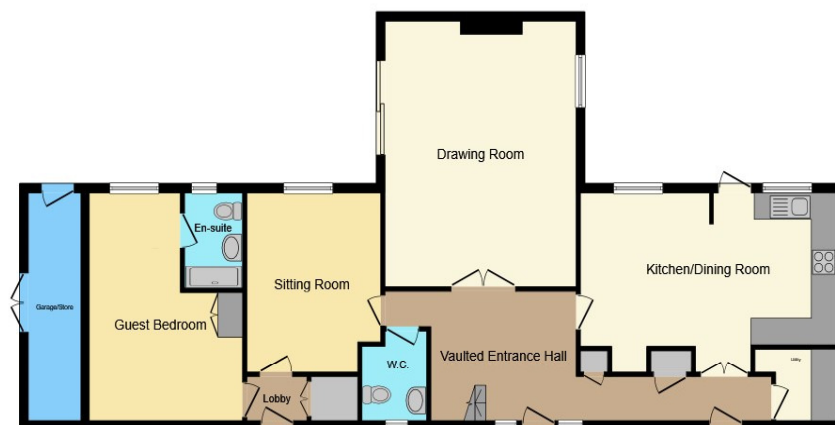
**Ebony Barn The Street, South Stoke, Reading RG8 0JS**

**Welcome to**

## **Ebony Barn The Street, South Stoke, Reading**

No Chain! An impressive, detached, character barn rebuilt in 1993 replicating an original farm building in a traditional brick and stained boarded under a pitched clay tiled roof. Centrally located in the heart of this quintessential English riverside village, access to the river Thames at each end of the village, community village store, pub, primary school and only a short drive(2.2miles) to the mainline railway station in Goring-on-Thames providing access to London in under the hour. Accommodation comprises: Large vaulted entrance hall, large open plan 23ft kitchen/dining room, utility room, cloakroom, 19ft drawing room with feature log burner, sitting room, ground floor bedroom 5 and ensuite shower room. Large galleried first floor landing with study area, master bedroom with eaves storage cupboards and en-suite bathroom with claw and ball bath, separate shower cubicle, two further bedrooms with interjoining bathroom, study/bedroom 4. Outside are two south westerly facing secluded courtyard areas, parking and double storage.





**Ground Floor**



**First Floor**

This floor plan is for illustrative purposes only. It is not drawn to scale. Any measurements, floor areas (including any total floor area), openings and orientation are approximate. No details are guaranteed, they cannot be relied upon for any purpose and they do not form part of any agreement. No liability is taken for any error, omission or misstatement. A party must rely upon its own inspection(s). Powered by [www.focalagent.com](http://www.focalagent.com)

## **Vaulted Entrance Hall**

## **Cloakroom**

## **Kitchen/Dining Room**

23' x 13' 9" narrowing to 11' 7" ( 7.01m x 4.19m narrowing to 3.53m )

## **Utility Room**

## **Drawing Room**

19' 5" x 15' 2" ( 5.92m x 4.62m )

## **Sitting Room**

13' 7" narrowing to 11' 7" x 10' 7" ( 4.14m narrowing to 3.53m x 3.23m )

## **Ground Floor Bedroom 5**

17' x 12' 2" narrowing to 7' 3" ( 5.18m x 3.71m narrowing to 2.21m )

## **En-Suite**

## **Galleried Landing And Study**

## **Master Bedroom**

13' 10" x 12' 10" restricted height ( 4.22m x 3.91m restricted height )

## **En-Suite**

## **Bedroom**

12' 6" x 10' 7" restricted height ( 3.81m x 3.23m restricted height )

## **Family Bathroom**

## **Bedroom**

13' x 9' 9" restricted height ( 3.96m x 2.97m restricted height )

## **Study/Bedroom**

12' x 8' 6" restricted height ( 3.66m x 2.59m restricted height )

## **Two Courtyards**

## **Garage/Storage**

17' x 4' 1" ( 5.18m x 1.24m )

## **Parking**

**Welcome to**

## **Ebony Barn The Street, South Stoke, Reading**

- Originally A Farming Barn Which Was Skilfully Re Built In 1993
- Quintessential English Riverside Village
- Five Bedrooms
- Two Courtyard Gardens
- Three Bathrooms

Tenure: Freehold EPC Rating: C  
Council Tax Band: E

**£940,000**



Please note the marker reflects the postcode not the actual property

**view this property online** [allenandharris.co.uk/Property/WLF104985](https://allenandharris.co.uk/Property/WLF104985)



Property Ref:  
WLF104985 - 0005

1. MONEY LAUNDERING REGULATIONS Intending purchasers will be asked to produce identification documentation at a later stage and we would ask for your co-operation in order that there is no delay in agreeing the sale. 2. These particulars do not constitute part or all of an offer or contract. 3. The measurements indicated are supplied for guidance only and as such must be considered incorrect. Potential buyers are advised to recheck measurements before committing to any expense. 4. We have not tested any apparatus, equipment, fixtures or services and it is in the buyers interest to check the working condition of any appliances. 5. Where an EPC, or a Home Report (Scotland only) is held for this property, it is available for inspection at the branch by appointment. If you require a printed version of a Home Report, you will need to pay a reasonable production charge reflecting printing and other costs. 6. We are not able to offer an opinion either written or verbal on the content of these reports and this must be obtained from your legal representative. 7. Whilst we take care in preparing these reports, a buyer should ensure that his/her legal representative confirms as soon as possible all matters relating to title including the extent and boundaries of the property and other important matters before exchange of contracts.

Allen & Harris is a trading name of Sequence (UK) Limited which is registered in England and Wales under company number 4268443, Registered Office is Cumbria House, 16-20 Hockliffe Street, Leighton Buzzard, Bedfordshire, LU7 1GN. VAT Registration Number is 500 2481 05.

  
**allen & harris**



**01491 835135**



[wallingford@allenandharris.co.uk](mailto:wallingford@allenandharris.co.uk)



6 St. Marys Street, WALLINGFORD, Oxfordshire,  
OX10 0EL



**[allenandharris.co.uk](https://allenandharris.co.uk)**