



**Glebe Road, Solihull B91 2LX**

**welcome to**

## **Glebe Road, Solihull**

**\*\* THREE BEDROOMS \*\* KITCHEN/DINER \*\* UTILITY ROOM \*\* CLOSE TO SOLIHULL TOWN CENTRE \*\* NEAR TO SOLIHULL HOSPITAL \*\* EXCELLENT LOCATION \*\* GOOD TRANSPORT LINKS \*\***

### **Agent Note**

The Council Tax Band is C.

### **Entrance Hall**

Single glazed window to front, ceiling light point, storage cupboard, radiator.

### **Lounge**

12' 1" x 12' 4" ( 3.68m x 3.76m )

Gas fire, double glazed window to front, radiator, ceiling light point.

### **Kitchen/Diner**

19' 9" into recess x 8' 7" ( 6.02m into recess x 2.62m )

Double glazed window to rear, spotlights, gas fire, radiator, pantry with single glazed window to rear, boiler, fitted cooker and hob, fitted fridge, double glazed window to side, solid floor to rear.

### **Utility Room**

10' 9" x 9' 6" ( 3.28m x 2.90m )

Single glazed window to rear and utility storage area.

### **Landing**

Loft access, ceiling light point.

### **Bedroom One**

12' 11" x 8' 6" ( 3.94m x 2.59m )

Double glazed window to the front, built in cupboard, ceiling light point, radiator.

### **Bedroom Two**

9' 2" x 7' 8" ( 2.79m x 2.34m )

One double glazed window to the rear, built in wardrobe, radiator, ceiling light point.

### **Bedroom Three**

9' 2" x 7' 8" ( 2.79m x 2.34m )

Two double glazed windows to the front, built in wardrobe, radiator, ceiling light point.

### **Bathroom**

Spotlights, radiator, sink, wc, bath with over shower, double glazed window to rear.

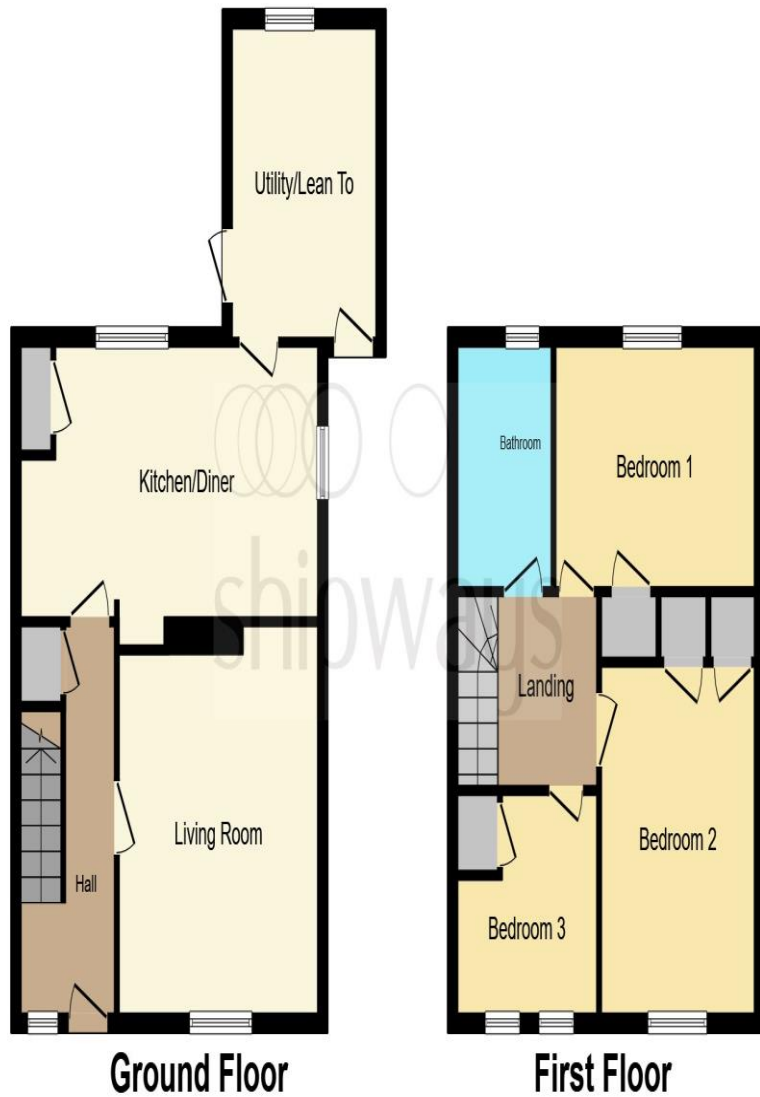
### **Front Garden**

Lawn, bushes and plants.

### **Rear Graden**

Patio, laid to lawn.





This floor plan is for illustrative purposes only. It is not drawn to scale. Any measurements, floor areas (including any total floor area), openings and orientation are approximate. No details are guaranteed, they cannot be relied upon for any purpose and they do not form part of any agreement. No liability is taken for any error, omission or misstatement. A party must rely upon its own inspection(s). Powered by [www.focalagent.com](http://www.focalagent.com)



**welcome to**

## **Glebe Road, Solihull**

- THREE BEDROOMS
- OPEN PLAN KITCHEN/DINER
- UTILITY ROOM
- FRONT AND REAR GARDENS
- SPACIOUS LOUNGE

Tenure: Freehold EPC Rating: D

Council Tax Band: C

offers over

**£325,000**



**view this property online** [shipways.co.uk/Property/SLY111597](http://shipways.co.uk/Property/SLY111597)



Property Ref:

SLY111597 - 0009

1. MONEY LAUNDERING REGULATIONS Intending purchasers will be asked to produce identification documentation at a later stage and we would ask for your co-operation in order that there is no delay in agreeing the sale. 2. These particulars do not constitute part or all of an offer or contract. 3. The measurements indicated are supplied for guidance only and as such must be considered incorrect. Potential buyers are advised to recheck measurements before committing to any expense. 4. We have not tested any apparatus, equipment, fixtures or services and it is in the buyers interest to check the working condition of any appliances. 5. Where an EPC, or a Home Report (Scotland only) is held for this property, it is available for inspection at the branch by appointment. If you require a printed version of a Home Report, you will need to pay a reasonable production charge reflecting printing and other costs. 6. We are not able to offer an opinion either written or verbal on the content of these reports and this must be obtained from your legal representative. 7. Whilst we take care in preparing these reports, a buyer should ensure that his/her legal representative confirms as soon as possible all matters relating to title including the extent and boundaries of the property and other important matters before exchange of contracts.

Shipways is a trading name of Sequence (UK) Limited which is registered in England and Wales under company number 4268443, Registered Office is Cumbria House, 16-20 Hockliffe Street, Leighton Buzzard, Bedfordshire, LU7 1GN. VAT Registration Number is 500 2481 05.



**0121 744 4595**



[shirley@shipways.co.uk](mailto:shirley@shipways.co.uk)



208 Stratford Road, Shirley, SOLIHULL, West Midlands, B90 3AG



**[shipways.co.uk](http://shipways.co.uk)**