



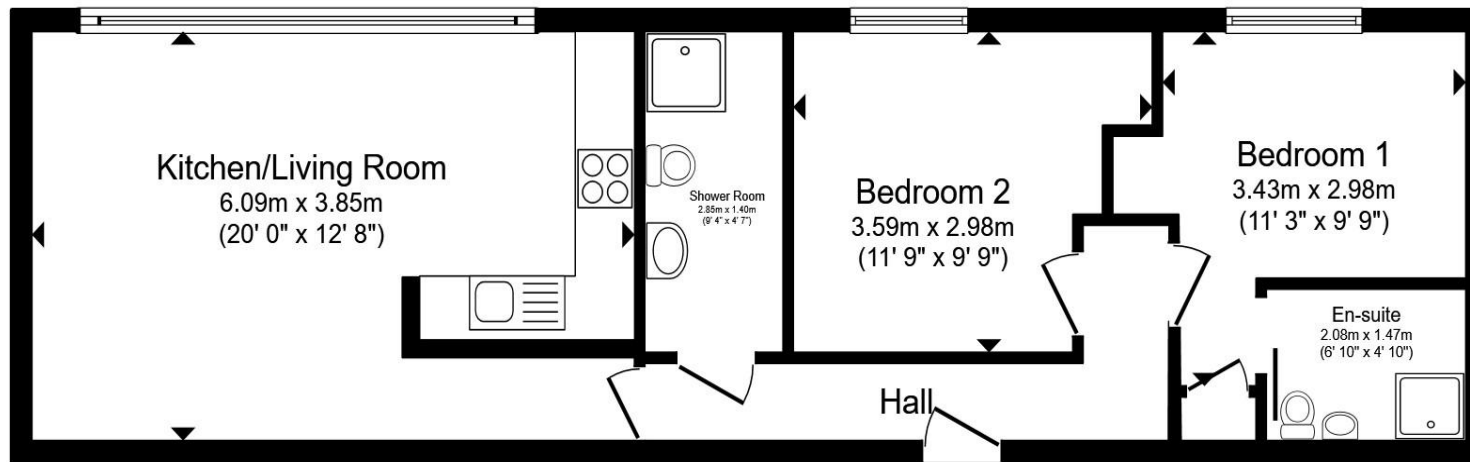
Century House Stratford Road, Shirley Solihull B90 3BH

welcome to

Century House Stratford Road, Shirley Solihull

A well-proportioned two-bedroom apartment located on the third floor of Century House on Stratford Road, Shirley. Offering approximately 593 sq. ft. of accommodation, the property features an open-plan living space, two bathrooms and a convenient layout close to local amenities and transport links.





Floor Plan

Agent Note

Lounge/Kitchen

20' 3" x 13' 4" (6.17m x 4.06m)

Bedroom One

11' 11" x 11' 3" (3.63m x 3.43m)

En Suite

Bedroom Two

11' 11" x 9' 11" (3.63m x 3.02m)

Bathroom

Total floor area 55.8 m² (600 sq.ft.) approx

This floor plan is for illustrative purposes only. It is not drawn to scale. Any measurements, floor areas (including any total floor area), openings and orientation are approximate. No details are guaranteed, they cannot be relied upon for any purpose and they do not form part of any agreement. No liability is taken for any error, omission or misstatement. A party must rely upon its own inspection(s). Powered by www.propertybox.io



welcome to

Century House Stratford Road, Shirley Solihull

- Third-floor apartment
- Two bedrooms
- Open-plan kitchen/living area
- Ensuite with bedroom 1
- Close to shops, amenities and transport links

Tenure: Leasehold EPC Rating: D

Council Tax Band: A Service Charge: 2260.00

Ground Rent: 250.00

This is a Leasehold property. We are awaiting further details about the Term of the lease. For further information please contact the branch. Please note additional fees could be incurred for items such as Leasehold packs.



Please note the marker reflects the
postcode not the actual property

view this property online shipways.co.uk/Property/SLY112240



Property Ref:
SLY112240 - 0006

1. MONEY LAUNDERING REGULATIONS Intending purchasers will be asked to produce identification documentation at a later stage and we would ask for your co-operation in order that there is no delay in agreeing the sale. 2. These particulars do not constitute part or all of an offer or contract. 3. The measurements indicated are supplied for guidance only and as such must be considered incorrect. Potential buyers are advised to recheck measurements before committing to any expense. 4. We have not tested any apparatus, equipment, fixtures or services and it is in the buyers interest to check the working condition of any appliances. 5. Where an EPC, or a Home Report (Scotland only) is held for this property, it is available for inspection at the branch by appointment. If you require a printed version of a Home Report, you will need to pay a reasonable production charge reflecting printing and other costs. 6. We are not able to offer an opinion either written or verbal on the content of these reports and this must be obtained from your legal representative. 7. Whilst we take care in preparing these reports, a buyer should ensure that his/her legal representative confirms as soon as possible all matters relating to title including the extent and boundaries of the property and other important matters before exchange of contracts.

Shipways is a trading name of Sequence (UK) Limited which is registered in England and Wales under company number 4268443, Registered Office is Cumbria House, 16-20 Hockliffe Street, Leighton Buzzard, Bedfordshire, LU7 1GN. VAT Registration Number is 500 2481 05.



0121 744 4595



shirley@shipways.co.uk



208 Stratford Road, Shirley, SOLIHULL, West
Midlands, B90 3AG



shipways.co.uk