



Clinton Grove, Shirley Solihull B90 4RS

welcome to

Clinton Grove, Shirley Solihull

A well-presented three-bedroom semi-detached home located on the sought-after Clinton Grove in Shirley. Offering spacious living with an extended open-plan dining area, bay-fronted lounge, and generous garden, this property is ideal for families or buyers looking to personalise a traditional home.

Agent Note

This property is council tax band C.

Entrance Hall

Laminate flooring, storage cupboard, stairs to first floor.

Lounge

13' 10" x 11' (4.22m x 3.35m)

Central heating bay window to front, gas fire, carpet, open to dining room.

Dining Room

11' 2" x 9' 6" (3.40m x 2.90m)

Double glazed sliding doors to rear, carpet.

Kitchen

7' 10" x 7' 6" (2.39m x 2.29m)

Double glazed window & door to rear, range of wall & base units, electric cooker, space for washing machine, sink & drainer, breakfast bar.

Landing

Loft hatch, carpet.

Bedroom 1

12' x 10' 6" (3.66m x 3.20m)

Double glazed window to front, carpet.

Bedroom 2

11' 3" x 9' 6" (3.43m x 2.90m)

Double glazed window to rear, carpet.

Bedroom 3

7' 3" x 6' 6" (2.21m x 1.98m)

Double glazed window to front, carpet.

Bathroom

Double glazed window to rear, carpet, airing

cupboard with tank, bath with shower over, wash hand basin, low level flush w/c.

Front Of Property

Driveway & garage.

Rear Garden

North west facing.





view this property online shipways.co.uk/Property/SLY111770



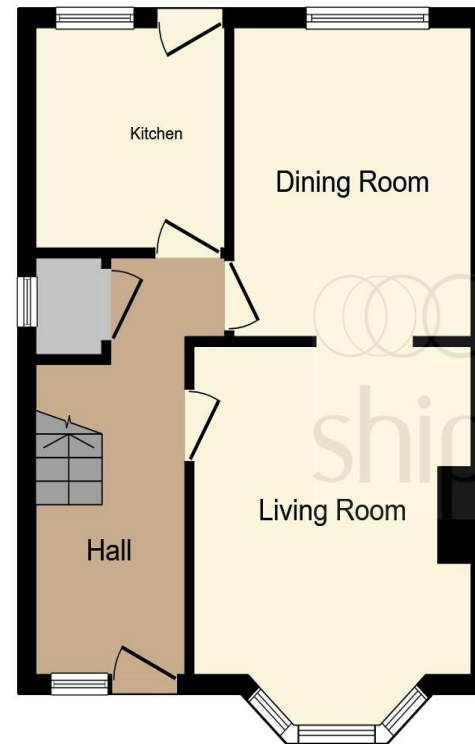
welcome to

Clinton Grove, Shirley Solihull

- Three-bedroom semi-detached house
- Sought-after location in Shirley
- Separate fitted kitchen
- Two double bedrooms and one single
- Family bathroom

Tenure: Freehold EPC Rating: E
Council Tax Band: C

offers over
£325,000



Ground Floor



First Floor

This floor plan is for illustrative purposes only. It is not drawn to scale. Any measurements, floor areas (including any total floor area), openings and orientation are approximate. No details are guaranteed, they cannot be relied upon for any purpose and they do not form part of any agreement. No liability is taken for any error, omission or misstatement. A party must rely upon its own inspection(s). Powered by www.focalagent.com

view this property online shipways.co.uk/Property/SLY111770



Property Ref:
SLY111770 - 0004

1. MONEY LAUNDERING REGULATIONS Intending purchasers will be asked to produce identification documentation at a later stage and we would ask for your co-operation in order that there is no delay in agreeing the sale. 2. These particulars do not constitute part or all of an offer or contract. 3. The measurements indicated are supplied for guidance only and as such must be considered incorrect. Potential buyers are advised to recheck measurements before committing to any expense. 4. We have not tested any apparatus, equipment, fixtures or services and it is in the buyers interest to check the working condition of any appliances. 5. Where an EPC, or a Home Report (Scotland only) is held for this property, it is available for inspection at the branch by appointment. If you require a printed version of a Home Report, you will need to pay a reasonable production charge reflecting printing and other costs. 6. We are not able to offer an opinion either written or verbal on the content of these reports and this must be obtained from your legal representative. 7. Whilst we take care in preparing these reports, a buyer should ensure that his/her legal representative confirms as soon as possible all matters relating to title including the extent and boundaries of the property and other important matters before exchange of contracts.

Shipways is a trading name of Sequence (UK) Limited which is registered in England and Wales under company number 4268443, Registered Office is Cumbria House, 16-20 Hockliffe Street, Leighton Buzzard, Bedfordshire, LU7 1GN. VAT Registration Number is 500 2481 05.



0121 744 4595



shirley@shipways.co.uk



208 Stratford Road, Shirley, SOLIHULL, West Midlands, B90 3AG



shipways.co.uk