



Ariel House Coventry Road, Sheldon Birmingham B26 3JW

welcome to

Ariel House Coventry Road, Sheldon Birmingham

SHOW APARTMENTS NOW READY TO VIEW ** Reserve Your First Home for Just £99 ** GIFTED DEPOSIT up to £10,000 ** COME & TAKE A LOOK!
Call Now to Secure your Viewing ** Don't Miss Out ** 40% NOW RESERVED!

Please Note

Images are for illustration purposes only.

Opening Times

THURSDAY-SATURDAY by appointment only

Parking*

Parking is available not included*





view this property online shipways.co.uk/Property/SLY111835



welcome to

Ariel House Coventry Road, Sheldon Birmingham

423.0 ft²

- SHOW APARTMENTS NOW READY TO VIEW
- Now open Thursday-Saturday 10am-5pm
- Modern & stylish 1 and 2 bedroom apartments
- Ideal for First Time Buyers & Investors
- Parking Available*

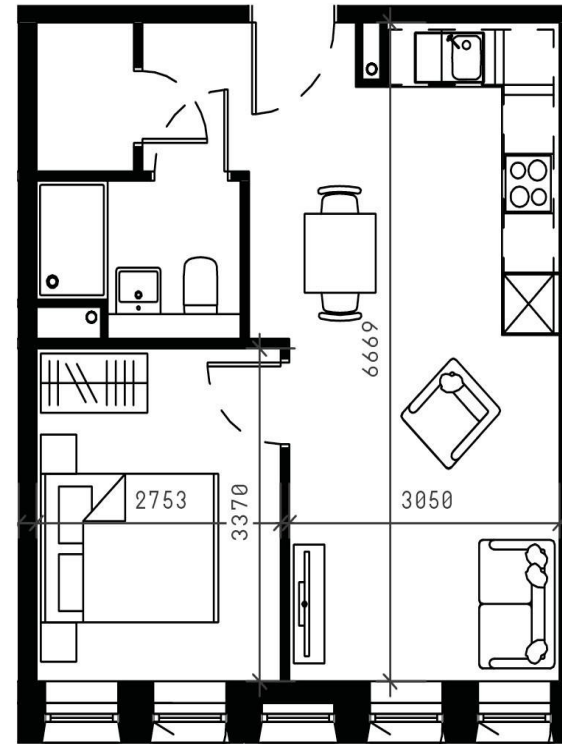
Tenure: Leasehold EPC Rating: Exempt

Service Charge: Ask Agent

Ground Rent: Ask Agent

This is a Leasehold property. We are awaiting further details about the Term of the lease. For further information please contact the branch. Please note additional fees could be incurred for items such as Leasehold packs.

£160,000



view this property online shipways.co.uk/Property/SLY111835



Property Ref:
SLY111835 - 0004

1. MONEY LAUNDERING REGULATIONS Intending purchasers will be asked to produce identification documentation at a later stage and we would ask for your co-operation in order that there is no delay in agreeing the sale. 2. These particulars do not constitute part or all of an offer or contract. 3. The measurements indicated are supplied for guidance only and as such must be considered incorrect. Potential buyers are advised to recheck measurements before committing to any expense. 4. We have not tested any apparatus, equipment, fixtures or services and it is in the buyers interest to check the working condition of any appliances. 5. Where an EPC, or a Home Report (Scotland only) is held for this property, it is available for inspection at the branch by appointment. If you require a printed version of a Home Report, you will need to pay a reasonable production charge reflecting printing and other costs. 6. We are not able to offer an opinion either written or verbal on the content of these reports and this must be obtained from your legal representative. 7. Whilst we take care in preparing these reports, a buyer should ensure that his/her legal representative confirms as soon as possible all matters relating to title including the extent and boundaries of the property and other important matters before exchange of contracts.



0121 744 4595



shirley@shipways.co.uk



208 Stratford Road, Shirley, SOLIHULL, West
Midlands, B90 3AG



shipways.co.uk

