



Tynedale Road, Birmingham B11 3QX



welcome to

Tynedale Road, Birmingham

**** THREE BEDROOMS ** DRIVEWAY ** GENEROUS SIZED REAR GARDEN ** EXCELLENT LOCATION ** WELL PRESENTED THROUGHOUT ** GOOD TRANSPORT LINKS ****

Agent Note

The Council Tax Band is A.

Entrance Porch

Double glazed window and UPVC front door.

Lounge

15' 5" x 11' 1" (4.70m x 3.38m)

Double glazed window to front, ceiling light point and central heating radiator.

Kitchen

Double glazed window to rear, double glazed door to rear, integrated cooker and cooker hood, gas boiler, sink, ceiling light point and door to staircase leading to first floor.

Landing

Double glazed window to side, ceiling light point loft hatch,

Bedroom One

12' 9" x 8' 2" (3.89m x 2.49m)

Double glazed window to rear, storage cupboard, ceiling light point and central heating radiator.

Bedroom Two

10' 9" x 7' 10" (3.28m x 2.39m)

Double glazed window to front, ceiling light point and central heating radiator.

Bedroom Three

7' 10" x 7' 2" (2.39m x 2.18m)

Double glazed window to front, ceiling light point and central heating radiator.

Downstairs Shower Room

Double glazed window to rear, w.c, wash hand basin, shower cubicle, ceiling light point, and heated towel

rail.

Fore Garden

paved Driveway.

Rear Garden

Patio area with laid to lawn.





view this property online shipways.co.uk/Property/SLY111299



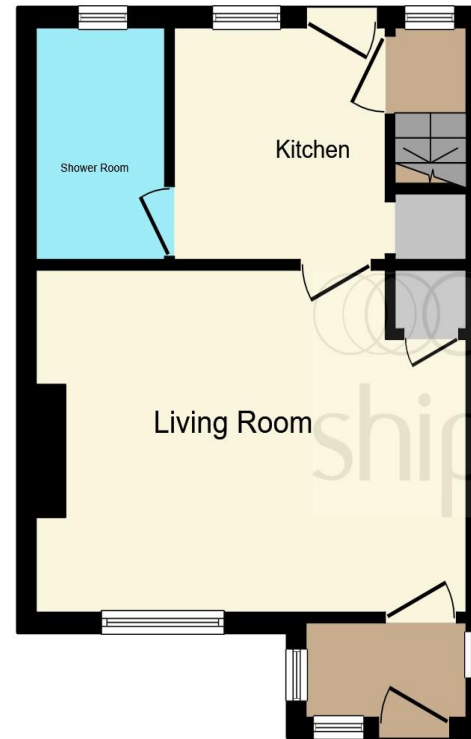
welcome to

Tynedale Road, Birmingham

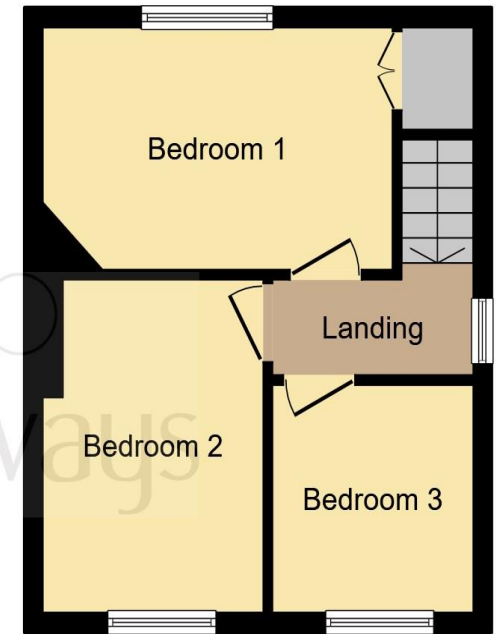
- THREE BEDROOMS
- SPACIOUS LOUNGE
- DRIVEWAY
- GENEROUS SIZED REAR GARDEN
- EXCELLENT LOCATION

Tenure: Freehold EPC Rating: C
Council Tax Band: A

offers over
£210,000



Ground Floor



First Floor

This floor plan is for illustrative purposes only. It is not drawn to scale. Any measurements, floor areas (including any total floor area), openings and orientation are approximate. No details are guaranteed, they cannot be relied upon for any purpose and they do not form part of any agreement. No liability is taken for any error, omission or misstatement. A party must rely upon its own inspection(s). Powered by www.focalagent.com

view this property online shipways.co.uk/Property/SLY111299



Property Ref:
SLY111299 - 0004

1. MONEY LAUNDERING REGULATIONS Intending purchasers will be asked to produce identification documentation at a later stage and we would ask for your co-operation in order that there is no delay in agreeing the sale. 2. These particulars do not constitute part or all of an offer or contract. 3. The measurements indicated are supplied for guidance only and as such must be considered incorrect. Potential buyers are advised to recheck measurements before committing to any expense. 4. We have not tested any apparatus, equipment, fixtures or services and it is in the buyers interest to check the working condition of any appliances. 5. Where an EPC, or a Home Report (Scotland only) is held for this property, it is available for inspection at the branch by appointment. If you require a printed version of a Home Report, you will need to pay a reasonable production charge reflecting printing and other costs. 6. We are not able to offer an opinion either written or verbal on the content of these reports and this must be obtained from your legal representative. 7. Whilst we take care in preparing these reports, a buyer should ensure that his/her legal representative confirms as soon as possible all matters relating to title including the extent and boundaries of the property and other important matters before exchange of contracts.

Shipways is a trading name of Sequence (UK) Limited which is registered in England and Wales under company number 4268443, Registered Office is Cumbria House, 16-20 Hockliffe Street, Leighton Buzzard, Bedfordshire, LU7 1GN. VAT Registration Number is 500 2481 05.



0121 744 4595



shirley@shipways.co.uk



208 Stratford Road, Shirley, SOLIHULL, West Midlands, B90 3AG



shipways.co.uk