



**Kingstone Place, Redditch B98 7GG**

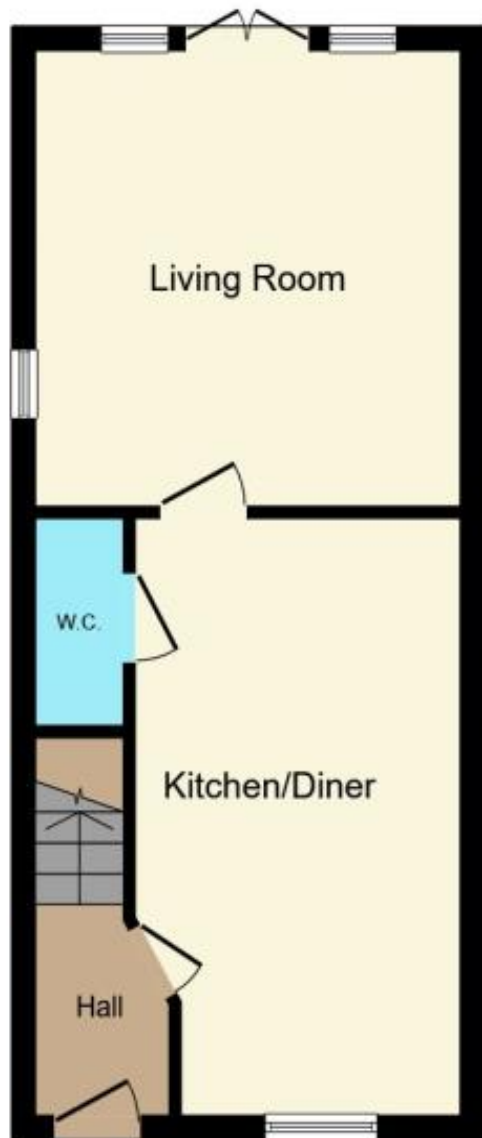


**welcome to**

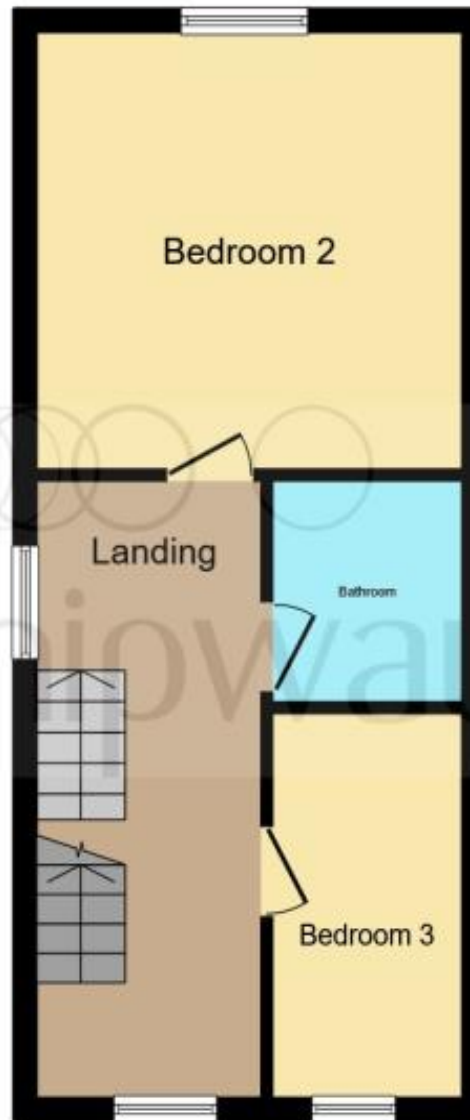
## **Kingstone Place, Redditch**

This beautifully presented, contemporary THREE BEDROOM, SEMI DETACHED home is not one to miss out on! Boasting an KITCHEN DINER, GOOD SIZED REAR GARDEN and OFF-ROAD PARKING FOR MULTIPLE CARS. A very well looked after, Ideal family home. Book your viewing today!

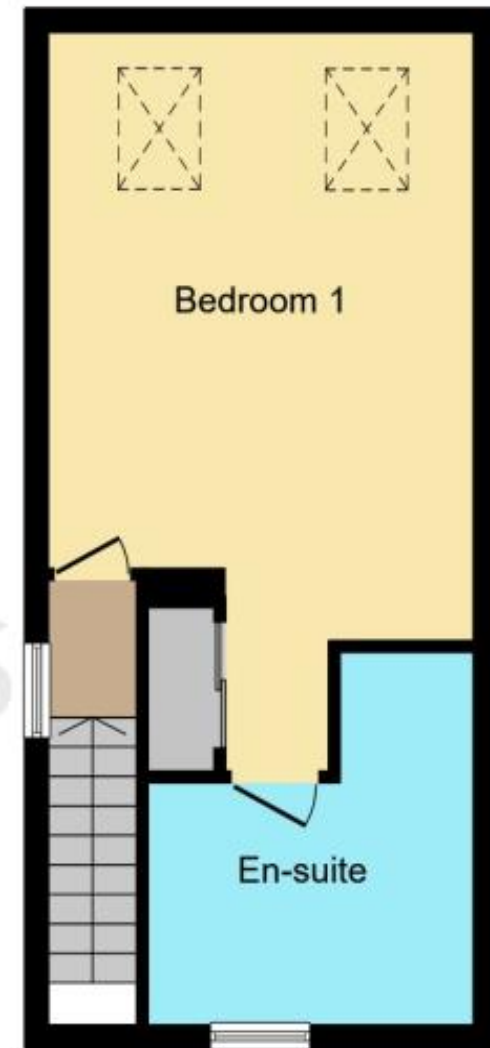




**Ground Floor**



**First Floor**



**Second Floor**

This floor plan is for illustrative purposes only. It is not drawn to scale. Any measurements, floor areas (including any total floor area), openings and orientation are approximate. No details are guaranteed, they cannot be relied upon for any purpose and they do not form part of any agreement. No liability is taken for any error, omission or misstatement. A party must rely upon its own inspection(s). Powered by [www.focalagent.com](http://www.focalagent.com)

### Approach

Via pathway leading up to main accommodation door with open canopy over.

### Entrance Hall

Feature Front door with obscure glazed panels. Access up the stairs to the first-floor accommodation. Central heating radiator.

### Kitchen Diner

17' 11" max x 9' 5" max (5.46m max x 2.87m max)  
Double Glazed Window to front. A range of modern style Wall and base units, work surface over. Sink and drainer with mixer tap over. Tiling to splash prone areas. Integrated fridge freezer, dishwasher. Space for washing machine. Induction hob, oven and an extractor over. Central heating radiator. Door to downstairs toilet and lounge. Space for dining table.

### Downstairs Toilet

Sink and pedestal. Close coupled toilet. Tiling to splash prone areas. Central heating radiator.

### Lounge

12' 10" x 12' 5" (3.91m x 3.78m)  
Double Glazed window to side. double glazed window and double doors to rear. Central heating radiator.

### Landing

Double glazed window to front. Double glazed window to side. Central heating radiator. Doors to two bedrooms and a family bathroom. Stairs to upper floor.

### Bathroom

Panelled Bath with shower over and screen. Sink and pedestal. Close coupled toilet. Tiling to splash prone areas. Central heating radiator.

### Bedroom 2

12' 10" x 12' 4" (3.91m x 3.76m)  
Double Glazed Window to rear. Central heating radiator.

### Bedroom 3

11' x 6' 3" (3.35m x 1.91m)  
Double Glazed Window to front. Central heating radiator.

### Second Landing

Double Glazed Window to side. Central heating radiator.

### Bedroom 1

15' 4" x 12' 11" (4.67m x 3.94m)  
Two Ceiling windows. Central heating radiator. Mirrored wardrobes. Door to ensuite and storage cupboard.

### Ensuite

Obscure double-Glazed Window to rear. Shower tray with wall mounted electric shower over. Closed coupled toilet. Sink and pedestal. Tiling to splash prone areas. Central heating radiator.

### Frontage

Driveway with space for multiple cars.

### Rear Garden

Fencing to sides and rear. Gated access to frontage. Laid lawn. Space for a shed. hard standing to rear.



***view this property online*** [shipways.co.uk/Property/RDC110097](http://shipways.co.uk/Property/RDC110097)



welcome to

## Kingstone Place, Redditch

- THREE BEDROOMS
- SEMI DETACHED HOUSE
- DOWNSTAIRS TOILET
- ENSUITE , FAMILY BATHROOM
- OFF ROAD PARKING

Tenure: Freehold EPC Rating: B

Council Tax Band: C

**£280,000**



Please note the marker reflects the postcode not the actual property

**view this property online** [shipways.co.uk/Property/RDC110097](https://shipways.co.uk/Property/RDC110097)



Property Ref:  
RDC110097 - 0004

1. MONEY LAUNDERING REGULATIONS Intending purchasers will be asked to produce identification documentation at a later stage and we would ask for your co-operation in order that there is no delay in agreeing the sale. 2. These particulars do not constitute part or all of an offer or contract. 3. The measurements indicated are supplied for guidance only and as such must be considered incorrect. Potential buyers are advised to recheck measurements before committing to any expense. 4. We have not tested any apparatus, equipment, fixtures or services and it is in the buyers interest to check the working condition of any appliances. 5. Where an EPC, or a Home Report (Scotland only) is held for this property, it is available for inspection at the branch by appointment. If you require a printed version of a Home Report, you will need to pay a reasonable production charge reflecting printing and other costs. 6. We are not able to offer an opinion either written or verbal on the content of these reports and this must be obtained from your legal representative. 7. Whilst we take care in preparing these reports, a buyer should ensure that his/her legal representative confirms as soon as possible all matters relating to title including the extent and boundaries of the property and other important matters before exchange of contracts.

Shipways is a trading name of Sequence (UK) Limited which is registered in England and Wales under company number 4268443, Registered Office is Cumbria House, 16-20 Hockliffe Street, Leighton Buzzard, Bedfordshire, LU7 1GN. VAT Registration Number is 500 2481 05.

  
shipways



**01527 65155**



[Redditch@shipways.co.uk](mailto:Redditch@shipways.co.uk)



3 Alcester Street, REDDITCH, Worcestershire,  
B98 8AE



**[shipways.co.uk](https://shipways.co.uk)**