



Buckingham Drive, Stoke Gifford Bristol BS34 8NS

welcome to

Buckingham Drive, Stoke Gifford Bristol

*** SOUTHERLY FACING GARDEN *** This property offer two double bedrooms kitchen diner, lounge and conservatory. It also benefits from a driveway for multiple vehicles and garage, further to this it has a southerly facing garden!! Situated in a popular road in Stoke Gifford.

Buckingham Drive

Entrance

Double glazed composite door to front, stairs to first floor, door to lounge and radiator.

Living Room

12' 2" max x 10' 9" max (3.71m max x 3.28m max)

Double glazed window to front aspect, understair storage cupboard, radiator and door to kitchen.

Kitchen/Diner

14' 1" max x 9' max (4.29m max x 2.74m max)

A modern fitted kitchen with a range of wall and floor units and work surfaces over, tiled splashbacks, stainless steel sink and drainer, gas hob and electric oven and cooker hood above. Double glazed window and door to conservatory, tile effect vinyl floor and radiator.

Conservatory

8' 11" max x 7' 4" max (2.72m max x 2.24m max)

Double glazed windows and French doors to garden and vinyl floor.

Stairs Leading Upwards

Landing

Doors to all rooms and double glazed window to side aspect.

Bedroom One

12' max x 10' 9" max (3.66m max x 3.28m max)

Double glazed window to front aspect, radiator, built in wardrobe and airing cupboard housing immersion tank.

Bedroom Two

9' 4" max x 7' 5" max (2.84m max x 2.26m max)

Double glazed window to rear aspect, radiator

Bathroom

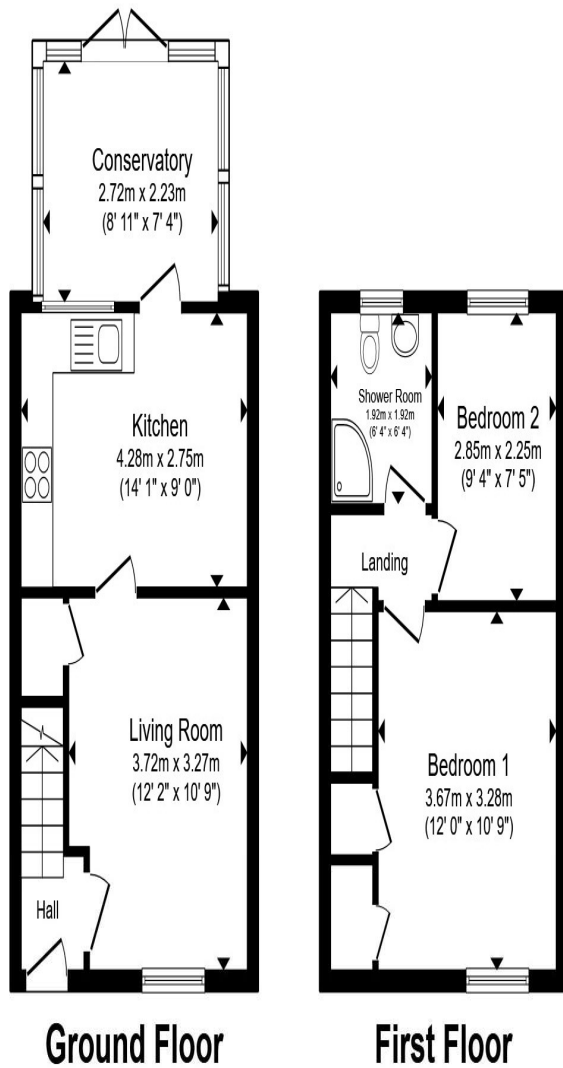
Well proportioned three piece bathroom to include a corner shower with sliding glass screen, radiator, part tiled walls, vinyl floor and double glazed window to rear aspect.

Garden

A Southerly facing rear garden fully enclosed by boundary wall and fence, gated access leading to driveway. Mainly laid to lawn with various trees and shrubs.

Garage

Up and over door to driveway



Total floor area 64.5 m² (694 sq.ft.) approx

This floor plan is for illustrative purposes only. It is not drawn to scale. Any measurements, floor areas (including any total floor area), openings and orientation are approximate. No details are guaranteed, they cannot be relied upon for any purpose and they do not form part of any agreement. No liability is taken for any error, omission or misstatement. A party must rely upon its own inspection(s). Powered by www.propertybox.io



welcome to
Buckingham Drive,
Stoke Gifford Bristol

- End Of Terrace Home
- Two Double Bedrooms
- Kitchen Diner, Lounge & Conservatory
- Garage & Driveway Parking
- Front and Southerly Facing Rear Garden

Tenure: Freehold EPC Rating: Awaited
Council Tax Band: B

£290,000



check out more properties at allenandharris.co.uk



Property Ref:
STG109947 - 0003

1. MONEY LAUNDERING REGULATIONS Intending purchasers will be asked to produce identification documentation at a later stage and we would ask for your co-operation in order that there is no delay in agreeing the sale. 2. These particulars do not constitute part or all of an offer or contract. 3. The measurements indicated are supplied for guidance only and as such must be considered incorrect. Potential buyers are advised to recheck measurements before committing to any expense. 4. We have not tested any apparatus, equipment, fixtures or services and it is in the buyers interest to check the working condition of any appliances. 5. Where an EPC, or a Home Report (Scotland only) is held for this property, it is available for inspection at the branch by appointment. If you require a printed version of a Home Report, you will need to pay a reasonable production charge reflecting printing and other costs. 6. We are not able to offer an opinion either written or verbal on the content of these reports and this must be obtained from your legal representative. 7. Whilst we take care in preparing these reports, a buyer should ensure that his/her legal representative confirms as soon as possible all matters relating to title including the extent and boundaries of the property and other important matters before exchange of contracts.

Allen & Harris is a trading name of Sequence (UK) Limited which is registered in England and Wales under company number 4268443, Registered Office is Cumbria House, 16-20 Hockliffe Street, Leighton Buzzard, Bedfordshire, LU7 1GN. VAT Registration Number is 500 2481 05.



0117 979 8082



StokeGifford@allenandharris.co.uk



41 North Road, Stoke Gifford, BRISTOL, BS34
8PB



allenandharris.co.uk