



Little Meadow, Bradley Stoke Bristol BS32 8AT



welcome to

Little Meadow, Bradley Stoke Bristol

This attractive semi-detached home with private front garden is presented to a stylish standard and further benefits from it's convenient position in Bradley Stoke. Access to a wide range of amenities, major employers, the motorway network and the Metro Line into Bristol.

Little Meadow Entrance Into Hallway

Access is granted from the attractive residential cul-de-sac and a lane offers access into the front garden and onward into the property. A glazed door leads into the hallway which is presented to a high standard and complete with tiled floor leading seamlessly into the kitchen.

Living Room

13' 11" max x 14' 8" max (4.24m max x 4.47m max)
The well proportioned living room offers an attractive outlook across the garden and is positioned conveniently adjacent to the kitchen. The space is finished with carpet and pendant light granting ample space for furniture and a dining table. The nature of the staircase design offers the ability for further storage solutions and/or a home office/desk should you require.

Kitchen

12' 7" max x 5' 9" max (3.84m max x 1.75m max)
The recently fitted kitchen is stylish and spacious. The dual aspect room is complete with window to the side and garden, wall and base units, integrated oven plus gas hob, stainless steel extractor, integrated washing machine and room for a separate fridge freezer.

Stairs Leading Upwards

Finished with carpet and additional hand rail.

Landing

Finished with carpet leading to all further rooms. Loft access via ceiling hatch which includes built-in ladder located here.

Bedroom 1

10' 10" max x 10' 8" max (3.30m max x 3.25m max)

The primary bedroom faces the front aspect over the garden offering mid distance views across Bradley Stoke Way with a bank of trees. The space includes built-in storage and further mirror-front fitted storage. Again, light and bright and presented to a neutral yet stylish standard.

Bedroom 2

8' 10" max x 6' 1" max (2.69m max x 1.85m max)
The second bedroom shares the same outlook to the front aspect and is also light and bright. The space is currently configured as a home office whilst offering flexible use. We suggest that this is perfect as a spare room, nursery, dressing room and space for a friend/lodger.

Bathroom

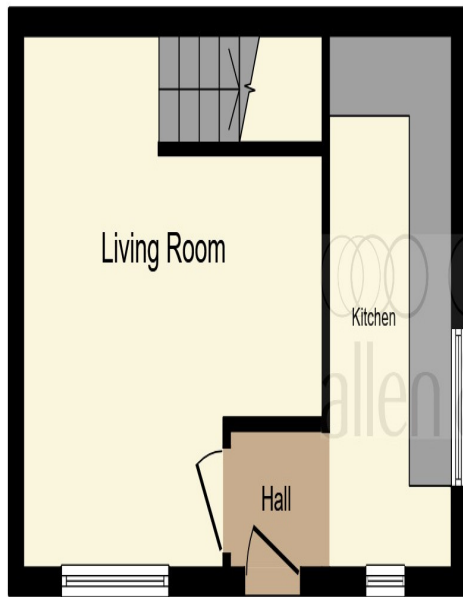
6' 2" max x 5' 10" max (1.88m max x 1.78m max)
Well proportioned bathroom which includes a bath and shower over, WC and basin. The space is finished to a good standard and the window to the side aspect ensures light and a feeling of openness.

Parking

Allocated spaces for two vehicles.

Garden

Attractive private garden with low wall and smart wooden fencing alongside gated access. Finished with mature herbaceous borders, planting beds, decking, low maintenance decorative gravel, paved walkway and shed.



Ground Floor



First Floor

This floor plan is for illustrative purposes only. It is not drawn to scale. Any measurements, floor areas (including any total floor area), openings and orientation are approximate. No details are guaranteed, they cannot be relied upon for any purpose and they do not form part of any agreement. No liability is taken for any error, omission or misstatement. A party must rely upon its own inspection(s). Powered by www.focalagent.com



welcome to
Little Meadow,
Bradley Stoke Bristol

- Two Bedroom House in Bradley Stoke
- Desirable Cul-De-Sac Position
- Low Maintenance Garden with Decorative Gravel and Decking
- Allocated Parking for Two Cars
- Council Tax Band B

Tenure: Freehold EPC Rating: C

£270,000



Awaiting Photograph

view this property online allenandharris.co.uk/Property/STG109246



Property Ref:
STG109246 - 0005

1. MONEY LAUNDERING REGULATIONS Intending purchasers will be asked to produce identification documentation at a later stage and we would ask for your co-operation in order that there is no delay in agreeing the sale. 2. These particulars do not constitute part or all of an offer or contract. 3. The measurements indicated are supplied for guidance only and as such must be considered incorrect. Potential buyers are advised to recheck measurements before committing to any expense. 4. We have not tested any apparatus, equipment, fixtures or services and it is in the buyers interest to check the working condition of any appliances. 5. Where an EPC, or a Home Report (Scotland only) is held for this property, it is available for inspection at the branch by appointment. If you require a printed version of a Home Report, you will need to pay a reasonable production charge reflecting printing and other costs. 6. We are not able to offer an opinion either written or verbal on the content of these reports and this must be obtained from your legal representative. 7. Whilst we take care in preparing these reports, a buyer should ensure that his/her legal representative confirms as soon as possible all matters relating to title including the extent and boundaries of the property and other important matters before exchange of contracts.

Allen & Harris is a trading name of Sequence (UK) Limited which is registered in England and Wales under company number 4268443, Registered Office is Cumbria House, 16-20 Hockliffe Street, Leighton Buzzard, Bedfordshire, LU7 1GN. VAT Registration Number is 500 2481 05.

allen & harris



0117 979 8082



StokeGifford@allenandharris.co.uk



41 North Road, Stoke Gifford, BRISTOL, BS34
8PB



allenandharris.co.uk