



Blacktown Gardens, Marshfield Cardiff CF3 2SF

welcome to

Blacktown Gardens, Marshfield Cardiff

A beautiful home situated in this lovely location in the semi rural area of Marshfield which is close to shops, park, public houses and bus routes. The home has been greatly improved by the current owners and deserves internal inspection.

Ground Floor

Entrance

Via a double glazed composite front door into:

Hallway

Stairs rising to first floor, radiator, laminate flooring, built in understairs storage and access to:

Ground Floor Shower Room

8' 2" x 3' 5" (2.49m x 1.04m)

Fitted with a three piece suite comprising shower cubicle, WC, wash hand basin, tiled flooring, heated towel rail and double glazed window to front aspect.

Study/Bedroom Three

11' 6" x 8' 6" (3.51m x 2.59m)

Double glazed French doors providing access to rear, laminate flooring and radiator.

Utility Room

7' 10" x 7' 7" (2.39m x 2.31m)

Double glazed window to rear aspect, radiator, laminate flooring, spaces for washing machine and tumble dryer, wall mounted boiler and double glazed composite door providing access to rear.

First Floor

Landing

Stairs rising to second floor and doors providing access to:

Lounge/Dining/Kitchen Areas

26' 3" x 17' 1" (8.00m x 5.21m)

Two double glazed windows to front aspect, laminate flooring and double doors providing access from first floor landing.

Kitchen Area: Fitted with a range of modern wall and base level units with complementary work surfaces, sink unit, integrated electric oven, dishwasher, fridge/freezer and bin storage, spotlights, laminate flooring and two double glazed windows to rear aspect.

Second Floor

Landing

Doors providing access to:

Bedroom One

13' 1" x 10' 6" (3.99m x 3.20m)

Double glazed French doors with Juliette to front aspect, radiator and built in wardrobe.

En-Suite

Fitted with a three piece suite comprising shower cubicle, WC, wash hand basin inset to vanity unit, extractor, tiled flooring, tiled walls and double glazed window to front aspect.

Bedroom Two

13' 9" x 9' 2" (4.19m x 2.79m)

Double glazed window to rear aspect and radiator.

Bathroom

7' 10" x 7' 7" (2.39m x 2.31m)

Fitted with a three piece suite comprising bath with shower over, WC, wash hand basin inset to vanity unit, tiled flooring, radiator and double glazed window to rear aspect.

Outside

Front

Drive providing off street parking.

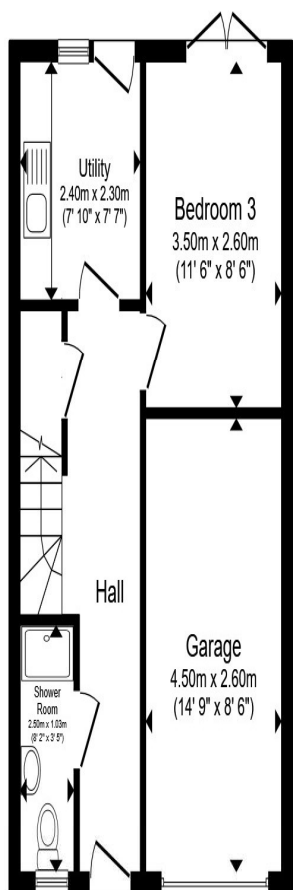
Rear Garden

Enclosed with area laid to lawn, paved patio area and planted border.

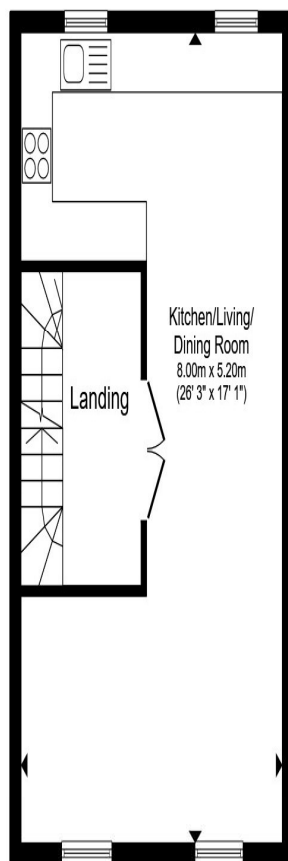
Garage

14' 9" x 8' 6" (4.50m x 2.59m)

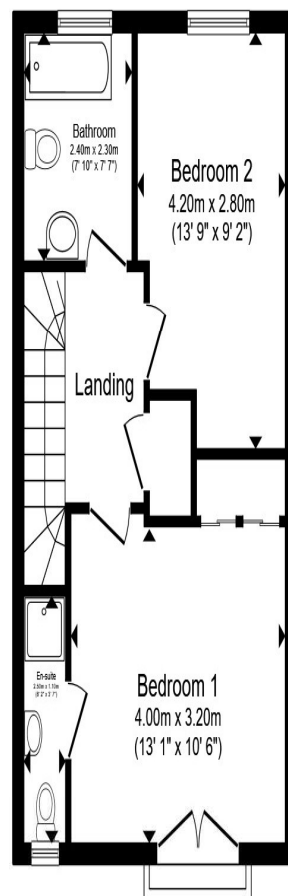
With up and over door.



Ground Floor



First Floor



Second Floor

Total floor area 122.7 m² (1,321 sq.ft.) approx

This floor plan is for illustrative purposes only. It is not drawn to scale. Any measurements, floor areas (including any total floor area), openings and orientation are approximate. No details are guaranteed, they cannot be relied upon for any purpose and they do not form part of any agreement. No liability is taken for any error, omission or misstatement. A party must rely upon its own inspection(s). Powered by www.propertybox.io



welcome to
Blacktown Gardens,
Marshfield Cardiff

- Three Storey Townhouse
- Three Double Bedrooms
- En-suite to Master
- First Floor Lounge/Dining/Kitchen
- Ground Floor Shower Room
- Main Bathroom Top Floor
- Driveway & Integral Garage
- Freehold

Tenure: Freehold EPC Rating: C
Council Tax Band: F

£360,000



view this property online allenandharris.co.uk/Property/ROA114516



Property Ref:
ROA114516 - 0004

1. MONEY LAUNDERING REGULATIONS Intending purchasers will be asked to produce identification documentation at a later stage and we would ask for your co-operation in order that there is no delay in agreeing the sale. 2. These particulars do not constitute part or all of an offer or contract. 3. The measurements indicated are supplied for guidance only and as such must be considered incorrect. Potential buyers are advised to recheck measurements before committing to any expense. 4. We have not tested any apparatus, equipment, fixtures or services and it is in the buyers interest to check the working condition of any appliances. 5. Where an EPC, or a Home Report (Scotland only) is held for this property, it is available for inspection at the branch by appointment. If you require a printed version of a Home Report, you will need to pay a reasonable production charge reflecting printing and other costs. 6. We are not able to offer an opinion either written or verbal on the content of these reports and this must be obtained from your legal representative. 7. Whilst we take care in preparing these reports, a buyer should ensure that his/her legal representative confirms as soon as possible all matters relating to title including the extent and boundaries of the property and other important matters before exchange of contracts.

Allen & Harris is a trading name of Sequence (UK) Limited which is registered in England and Wales under company number 4268443, Registered Office is Cumbria House, 16-20 Hockliffe Street, Leighton Buzzard, Bedfordshire, LU7 1GN. VAT Registration Number is 500 2481 05.


allen & harris



029 2046 4744



roath@allenandharris.co.uk



84 Albany Road, CARDIFF, South Glamorgan,
CF24 3RS



allenandharris.co.uk