



Silverton Crescent, BIRMINGHAM B13 9NH

welcome to

Silverton Crescent, BIRMINGHAM

END OF TERRACE PROPERTY * THREE GOOD SIZE BEDROOMS *** LARGE CONSERVATORY TO THE REAR, DRIVEWAY TO THE FRONT ****
KITCHEN **** UTILITY ROOM **** DOWNSTAIRS BATHROOM **** POPULAR RESIDENTIAL AREA **** CLOSE TO MOSLEY VILLAGE ****

Agent Note

This property is council tax band A.

Entrance

Property is accessed via a side covered entry leading to the entrance hall.

Entrance Hall

Stairs to first floor, door to all ground floor accommodation.

Lounge

12' 11" x 10' 5" (3.94m x 3.17m)
Double glazed window, central heating radiator, electric fire & surround.

Kitchen

11' 4" x 10' 2" (3.45m x 3.10m)
Double glazed doors to conservatory, range of wall & base units, double gas oven & hob, door to utility & bathroom.

Utility

6' 4" x 4' 2" (1.93m x 1.27m)

Bathroom - Downstairs

Obscure double glazed window, bath, low level flush w/c, wash hand basin.

Bedroom 1

15' 7" x 10' 6" (4.75m x 3.20m)
2 Double glazed windows, central heating radiator.

Bedroom 2

13' 10" x 7' 10" (4.22m x 2.39m)
Double glazed window, central heating radiator.

Bedroom 3

7' 8" x 7' (2.34m x 2.13m)
Double glazed window, central heating radiator.

Front Garden

Driveway to front with parking for 2/3 cars.

Rear Garden

Paved patio & shed to rear.

Conservatory





check out more properties at shipways.co.uk



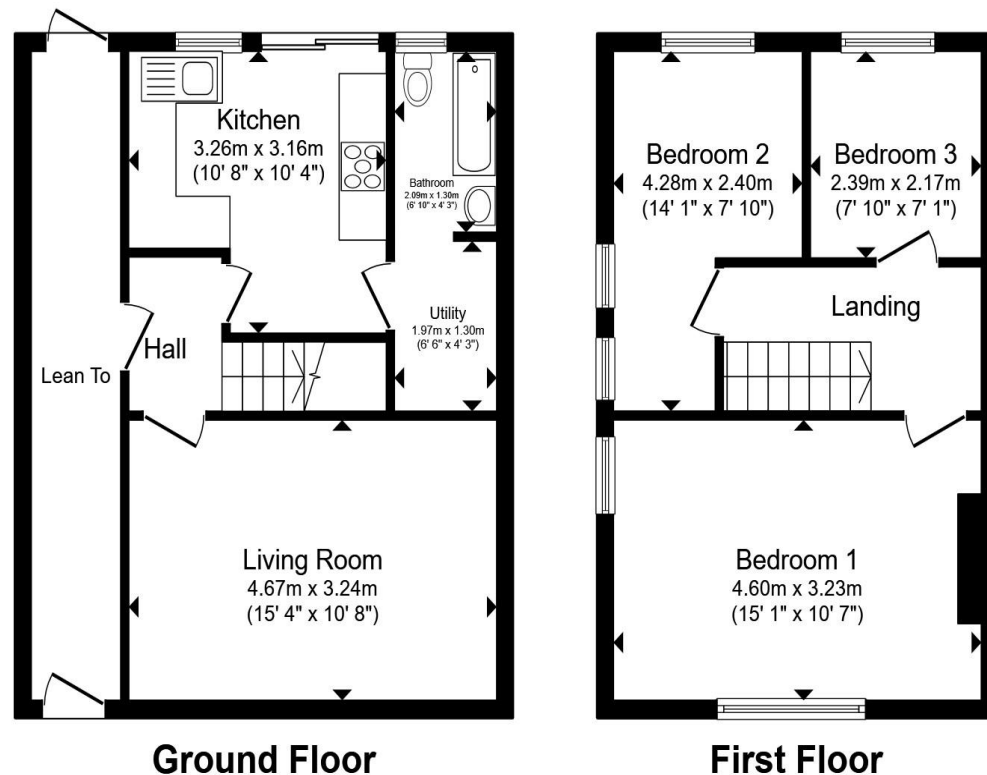
welcome to

Silverton Crescent, BIRMINGHAM

- Three Bedrooms
- Conservatory to the Rear
- Driveway to the Front.
- Downstairs Bathroom
- situated on a popular residential road.

Tenure: Freehold EPC Rating: C
Council Tax Band: A

offers over
£250,000



Total floor area 79.3 m² (854 sq.ft.) approx

This floor plan is for illustrative purposes only. It is not drawn to scale. Any measurements, floor areas (including any total floor area), openings and orientation are approximate. No details are guaranteed, they cannot be relied upon for any purpose and they do not form part of any agreement. No liability is taken for any error, omission or misstatement. A party must rely upon its own inspection(s). Powered by www.propertybox.io



check out more properties at shipways.co.uk



Property Ref:
HBN112085 - 0005

1. MONEY LAUNDERING REGULATIONS Intending purchasers will be asked to produce identification documentation at a later stage and we would ask for your co-operation in order that there is no delay in agreeing the sale. 2. These particulars do not constitute part or all of an offer or contract. 3. The measurements indicated are supplied for guidance only and as such must be considered incorrect. Potential buyers are advised to recheck measurements before committing to any expense. 4. We have not tested any apparatus, equipment, fixtures or services and it is in the buyers interest to check the working condition of any appliances. 5. Where an EPC, or a Home Report (Scotland only) is held for this property, it is available for inspection at the branch by appointment. If you require a printed version of a Home Report, you will need to pay a reasonable production charge reflecting printing and other costs. 6. We are not able to offer an opinion either written or verbal on the content of these reports and this must be obtained from your legal representative. 7. Whilst we take care in preparing these reports, a buyer should ensure that his/her legal representative confirms as soon as possible all matters relating to title including the extent and boundaries of the property and other important matters before exchange of contracts.

Not for marketing purposes INTERNAL USE ONLY



0121 427 3264



harborne@shipways.co.uk



172 High Street, Harborne, BIRMINGHAM,
West Midlands, B17 9PP



shipways.co.uk