



**Tiverton Road, Birmingham B29 6BW**

**welcome to**

## **Tiverton Road, Birmingham**

\*\*\* BUY TO LET OPPORTUNITY \*\*\* IDEAL LOCATION CLOSE TO UNIVERSITY OF BIRMINGHAM \*\*\* WALKING DISTANCE TO LOCAL AMENITIES \*\*\*  
EXCELLENT TRANSPORT LINKS \*\*\* SECURE INTERCOM ACCESS \*\*\* ONE BEDROOM APARTMENT \*\*\* FITTED KITCHEN \*\*\* RECEPTION ROOM \*\*\*  
BATHROOM \*\*\*

### **Agent Note**

This property is council tax band A.

### **Entrance Hallway**

Loft access, intercom system, storage cupboard.

### **Lounge**

13' x 10' 1" ( 3.96m x 3.07m )

Double glazed window to front, radiator. (currently used as a bedroom).

### **Kitchen**

10' 1" x 9' 1" ( 3.07m x 2.77m )

Double glazed window to rear, range of wall & base units with worktops over, plumbing for utilities, pace for cooker, stainless steel sink & drainer, storage cupboard built in boiler, radiator.

### **Bedroom**

13' 1" x 9' ( 3.99m x 2.74m )

Double glazed window to front, radiator.

### **Bathroom**

Double glazed frosted window to rear, tiled to splash prone areas, radiator, bath with electric shower over, wash hand basin with hot & cold taps, low level flush w/c.





***check out more properties at*** [shipways.co.uk](http://shipways.co.uk)



welcome to

## Tiverton Road, Birmingham

- Buy to let opportunity
- Close to University of Birmingham
- Walking distance to local amenities
- Excellent transport links
- Secure intercom access

Tenure: Leasehold EPC Rating: Awaited

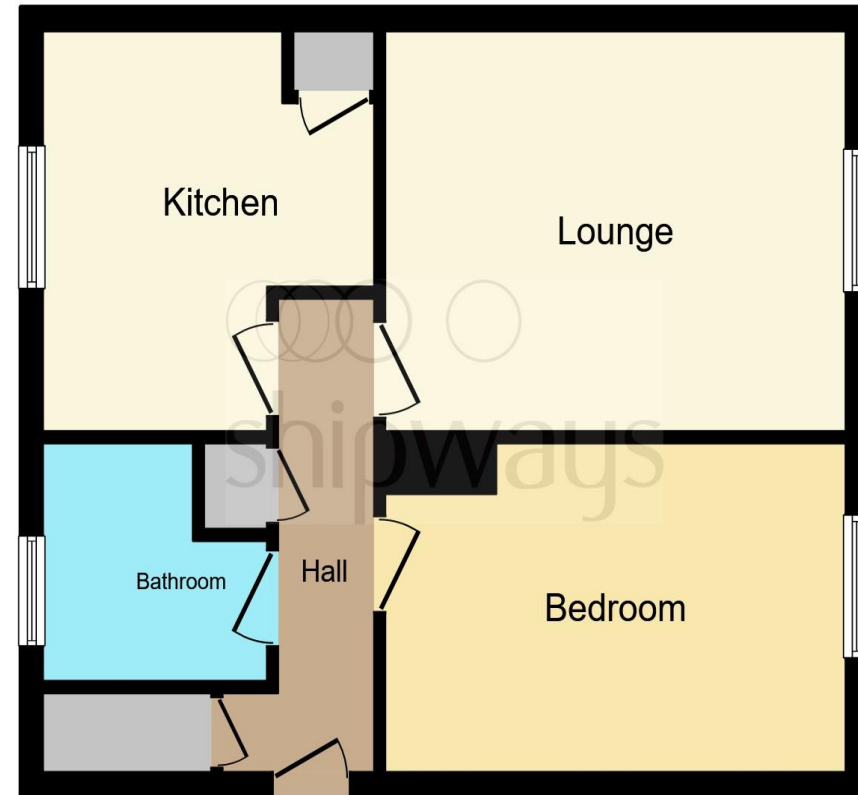
Council Tax Band: A Service Charge: 490.00

Ground Rent: 10.00

This is a Leasehold property with details as follows; Term of Lease 125 years from 02 Nov 1998.

Should you require further information please contact the branch. Please Note additional fees could be incurred for items such as Leasehold packs.

**£130,000**



This floor plan is for illustrative purposes only. It is not drawn to scale. Any measurements, floor areas (including any total floor area), openings and orientation are approximate. No details are guaranteed, they cannot be relied upon for any purpose and they do not form part of any agreement. No liability is taken for any error, omission or misstatement. A party must rely upon its own inspection(s). Powered by [www.focalagent.com](http://www.focalagent.com)

check out more properties at [shipways.co.uk](http://shipways.co.uk)



Property Ref:  
HBN111869 - 0005

1. MONEY LAUNDERING REGULATIONS Intending purchasers will be asked to produce identification documentation at a later stage and we would ask for your co-operation in order that there is no delay in agreeing the sale. 2. These particulars do not constitute part or all of an offer or contract. 3. The measurements indicated are supplied for guidance only and as such must be considered incorrect. Potential buyers are advised to recheck measurements before committing to any expense. 4. We have not tested any apparatus, equipment, fixtures or services and it is in the buyers interest to check the working condition of any appliances. 5. Where an EPC, or a Home Report (Scotland only) is held for this property, it is available for inspection at the branch by appointment. If you require a printed version of a Home Report, you will need to pay a reasonable production charge reflecting printing and other costs. 6. We are not able to offer an opinion either written or verbal on the content of these reports and this must be obtained from your legal representative. 7. Whilst we take care in preparing these reports, a buyer should ensure that his/her legal representative confirms as soon as possible all matters relating to title including the extent and boundaries of the property and other important matters before exchange of contracts.

Shipways is a trading name of Sequence (UK) Limited which is registered in England and Wales under company number 4268443, Registered Office is Cumbria House, 16-20 Hockliffe Street, Leighton Buzzard, Bedfordshire, LU7 1GN. VAT Registration Number is 500 2481 05.

**Not for marketing purposes INTERNAL USE ONLY**



**0121 427 3264**



[harborne@shipways.co.uk](mailto:harborne@shipways.co.uk)



172 High Street, Harborne, BIRMINGHAM,  
West Midlands, B17 9PP



[shipways.co.uk](http://shipways.co.uk)