



**Barleycorn Drive, Birmingham B16 0NA**

**welcome to**

## **Barleycorn Drive, Birmingham**

\*\*\* SITUATED NEAR THE NEW METROPOLITAN SUPER HOSPITAL\*\*\* TWO BEDROOM APARTMENT \*\*\*ATTENTION INVESTORS/ BUY TO LET OPPORTUNITY \*\*\* LOUNGE KITCHEN DINING AREA \*\*\*\* ALLOCATED PARKING \*\*\*\*GREAT BUY TO LET INVESTMENT\*\*\* GREAT TRANSPORT LINKS TO BIRMINGHAM CITY CENTRE \*\*\*

### **Agent Note**

This property is council tax band B.

### **Entrance Hall**

Double glazed window to side, boiler in cupboard.

### **Lounge/Kitchen**

22' 8" x 11' ( 6.91m x 3.35m )

Open-plan - Double glazed double doors to balcony and windows to side & rear, range of wall and base units with worktops over, sink & drainer with mixer tap, induction hob with extractor hood over, built in oven, electric radiator.

### **Bedroom One**

10' 2" plus wardrobe. x 9' 4" ( 3.10m plus wardrobe. x 2.84m )

Double glazed window to front, electric radiator.

### **Bedroom Two**

10' 2" x 6' 5" to front of wardrobe. extending to 8' 7" into wardrobe. ( 3.10m x 1.96m to front of wardrobe. extending to 2.62m into wardrobe. )

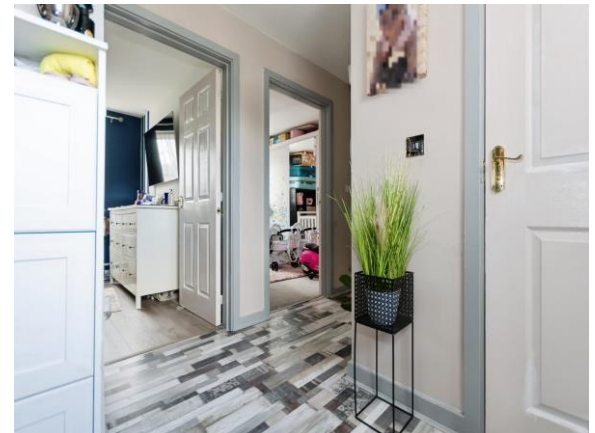
Double glazed window to front, electric radiator.

### **Bathroom**

Bath with shower over, wash hand basin with mixer tap, plumbing for utilities, heated towel rail, low level flush w/c.

### **Balcony**

small balcony off living room area.







***view this property online*** [shipways.co.uk/Property/HBN111505](https://shipways.co.uk/Property/HBN111505)



welcome to

## Barleycorn Drive, Birmingham

- BUY TO LET INVESTMENT OPPORTUNITY
- TWO BEDROOM FIRST FLOOR APARTMENT
- LOUNGE KITCHEN DINER AREA
- ALLOCATED PARKING
- 

Tenure: Leasehold EPC Rating: C

Council Tax Band: B Service Charge: 1572.14

Ground Rent: 250.00

This is a Leasehold property with details as follows; Term of Lease 125 years from 01 Jan 2006.

Should you require further information please contact the branch. Please Note additional fees could be incurred for items such as Leasehold packs.

**£120,000**



This floor plan is for illustrative purposes only. It is not drawn to scale. Any measurements, floor areas (including any total floor area), openings and orientation are approximate. No details are guaranteed, they cannot be relied upon for any purpose and they do not form part of any agreement. No liability is taken for any error, omission or misstatement. A party must rely upon its own inspection(s). Powered by [www.focalagent.com](http://www.focalagent.com)

**view this property online** [shipways.co.uk/Property/HBN111505](http://shipways.co.uk/Property/HBN111505)



Property Ref:  
HBN111505 - 0002

1. MONEY LAUNDERING REGULATIONS Intending purchasers will be asked to produce identification documentation at a later stage and we would ask for your co-operation in order that there is no delay in agreeing the sale. 2. These particulars do not constitute part or all of an offer or contract. 3. The measurements indicated are supplied for guidance only and as such must be considered incorrect. Potential buyers are advised to recheck measurements before committing to any expense. 4. We have not tested any apparatus, equipment, fixtures or services and it is in the buyers interest to check the working condition of any appliances. 5. Where an EPC, or a Home Report (Scotland only) is held for this property, it is available for inspection at the branch by appointment. If you require a printed version of a Home Report, you will need to pay a reasonable production charge reflecting printing and other costs. 6. We are not able to offer an opinion either written or verbal on the content of these reports and this must be obtained from your legal representative. 7. Whilst we take care in preparing these reports, a buyer should ensure that his/her legal representative confirms as soon as possible all matters relating to title including the extent and boundaries of the property and other important matters before exchange of contracts.

Shipways is a trading name of Sequence (UK) Limited which is registered in England and Wales under company number 4268443, Registered Office is Cumbria House, 16-20 Hockliffe Street, Leighton Buzzard, Bedfordshire, LU7 1GN. VAT Registration Number is 500 2481 05.



**0121 427 3264**



[harborne@shipways.co.uk](mailto:harborne@shipways.co.uk)



172 High Street, Harborne, BIRMINGHAM,  
West Midlands, B17 9PP



**[shipways.co.uk](http://shipways.co.uk)**