



**Quinton Road, Birmingham B17 0RB**

**welcome to**

## **Quinton Road, Birmingham**

**\*\* WELL-PRESENTED THREE BEDROOM DETACHED PROPERTY \*\* FRONT AND REAR RECEPTION ROOMS \*\* FITTED KITCHEN \*\* LEAN TO/UTILITY \*\* FOUR PIECE FAMILY BATHROOM \*\* SECURE REAR GARDEN \*\* DRIVEWAY \*\* WALKING DISTANCE TO THE QUEEN ELIZABETH HOSPITAL, BIRMINGHAM UNIVERSITY \*\* CLOSE TO HARBORNE VILLAGE \*\***

### **Agent Note**

This property is council tax band D.

### **Lounge**

14' 4" x 10' 3" ( 4.37m x 3.12m )

Double glazed front facing bay window, central heating radiator.

### **Reception Room 2/Dining Room**

12' 8" x 12' ( 3.86m x 3.66m )

Double glazed front facing window, central heating radiator.

### **Downstairs Shower Room**

Shower cubical, low level flush w/c, wash hand basin.

### **Kitchen**

12' 7" x 8' 3" ( 3.84m x 2.51m )

Double glazed rear facing window, central heating radiator, range of wall & base units, electric hob & oven, sink & drainer unit, dish washer.

### **Utility/Lean To**

11' 9" x 4' 3" ( 3.58m x 1.30m )

door to rear garden.

### **Bedroom 1**

15' 4" x 10' 10" ( 4.67m x 3.30m )

Double glazed front facing bay window, central heating radiator.

### **Bedroom 2**

11' 9" x 11' 5" ( 3.58m x 3.48m )

Double glazed rear facing window, central heating radiator.

### **Bedroom 3**

12' 7" x 8' 1" ( 3.84m x 2.46m )

Double glazed rear facing window, central heating

radiator.

### **Bathroom**

Double glazed front facing window, central heating radiator, shower cubical, low level flush w/c, wash hand basin.

### **Rear Garden**

Patio & lawned areas, garden shed.

### **Office**

10' 4" x 7' 5" ( 3.15m x 2.26m )

Was previously a garage. Double glazed front facing window, downstairs shower room next to office.







***view this property online*** [shipways.co.uk/Property/HBN108952](https://shipways.co.uk/Property/HBN108952)



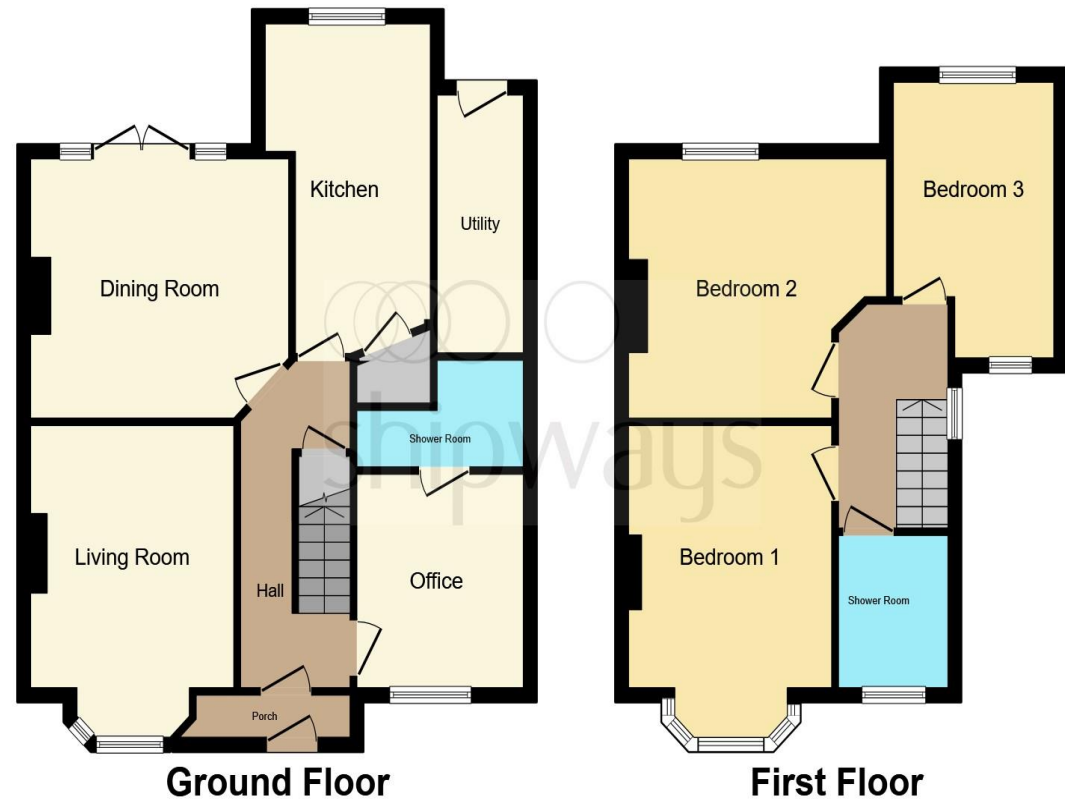
welcome to

## Quinton Road, Birmingham

- Well-presented three bedroom semi-detached residence
- Front and rear reception rooms
- Fitted kitchen
- Lean to/ utility
- Four piece family bathroom

Tenure: Freehold EPC Rating: C

**£425,000**



This floor plan is for illustrative purposes only. It is not drawn to scale. Any measurements, floor areas (including any total floor area), openings and orientation are approximate. No details are guaranteed, they cannot be relied upon for any purpose and they do not form part of any agreement. No liability is taken for any error, omission or misstatement. A party must rely upon its own inspection(s). Powered by [www.focalagent.com](http://www.focalagent.com)

view this property online [shipways.co.uk/Property/HBN108952](http://shipways.co.uk/Property/HBN108952)



Property Ref:  
HBN108952 - 0003

1. MONEY LAUNDERING REGULATIONS Intending purchasers will be asked to produce identification documentation at a later stage and we would ask for your co-operation in order that there is no delay in agreeing the sale. 2. These particulars do not constitute part or all of an offer or contract. 3. The measurements indicated are supplied for guidance only and as such must be considered incorrect. Potential buyers are advised to recheck measurements before committing to any expense. 4. We have not tested any apparatus, equipment, fixtures or services and it is in the buyers interest to check the working condition of any appliances. 5. Where an EPC, or a Home Report (Scotland only) is held for this property, it is available for inspection at the branch by appointment. If you require a printed version of a Home Report, you will need to pay a reasonable production charge reflecting printing and other costs. 6. We are not able to offer an opinion either written or verbal on the content of these reports and this must be obtained from your legal representative. 7. Whilst we take care in preparing these reports, a buyer should ensure that his/her legal representative confirms as soon as possible all matters relating to title including the extent and boundaries of the property and other important matters before exchange of contracts.



**0121 427 3264**



[harborne@shipways.co.uk](mailto:harborne@shipways.co.uk)



172 High Street, Harborne, BIRMINGHAM,  
West Midlands, B17 9PP



**[shipways.co.uk](http://shipways.co.uk)**