



Castle Wood Road, Sully, Penarth, CF64 5WP

Welcome to

Castle Wood Road, Sully, Penarth

Beautifully presented throughout and offered with NO CHAIN, this two double bedroom home is ideal for first time buyers and downsizers alike. With its downstairs cloakroom/WC, tandem driveway for two cars, enclosed rear garden with timber deck and open plan living space, don't miss it, call today!

Entrance Hall

Enter via a part double glazed door, tiled floor, doors to cloakroom/wc and living space.

Cloakroom / Wc

Double glazed window to front, wc, pedestal wash hand basin with mixer tap over and radiator.

Lounge

17' 11" x 13' (5.46m x 3.96m)
Tiled floor and radiator

Kitchen

Stairs to first floor, dining area, one and a half bowl sink and drainer unit with mixer tap over, integrated electric oven and hob with stainless steel splash back and cooker hood over, space for fridge freezer.

Utility Cupboard

Wall mounted gas central heating boiler, space for washing machine/dryer and tiled floor.

Landing

Spindles and balustrades, radiator and loft access with ladder to boarded loft with light.

Bedroom 1

13' 1" max x 7' 10" (3.99m max x 2.39m)
Double glazed window to rear, built out double wardrobe and radiator.

Bedroom 2

13' max x 7' 8" (3.96m max x 2.34m)
Two double glazed windows to front, built in single wardrobe/storage cupboard and radiator.

Bathroom

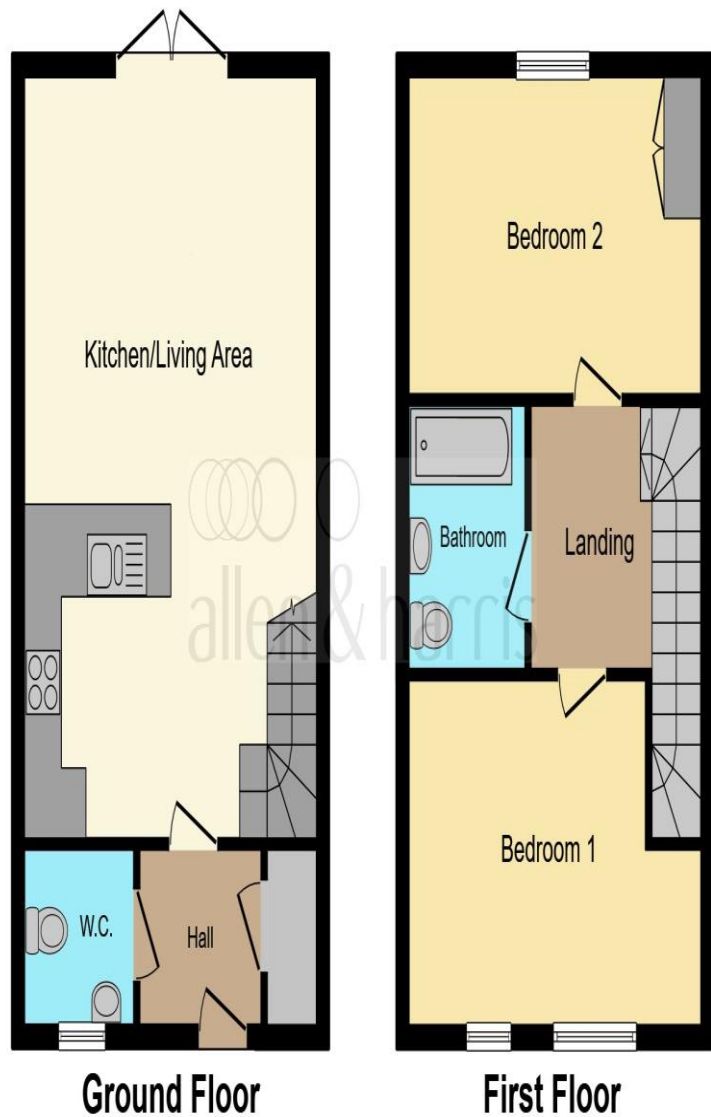
Pedestal wash hand basin with mixer tap over, wc, panelled bath with screen and shower over, tiled splash back and radiator.

Rear Garden

Enclosed rear garden with timber fenced boundaries, patio area laid to slab and large timber deck.

Parking

Double/tandem drive to side with parking for 2 cars.



This floor plan is for illustrative purposes only. It is not drawn to scale. Any measurements, floor areas (including any total floor area), openings and orientation are approximate. No details are guaranteed, they cannot be relied upon for any purpose and they do not form part of any agreement. No liability is taken for any error, omission or misstatement. A party must rely upon its own inspection(s). Powered by www.focalagent.com



Welcome to

Castle Wood Road, Sully, Penarth

- A very nicely presented modern mid-link home offered with NO CHAIN
- Two double bedrooms and a nicely appointed bathroom
- Downstairs cloakroom/WC and an open plan living space
- Tandem driveway providing parking for 2 cars
- Generous rear garden with rear lane access and a large timber deck.

Tenure: Freehold EPC Rating: B

£255,000

directions to this property:

Entering Sully from an Easterly direction from Penarth, take the first right into Swanbridge Road, then take the first left onto Melrose Walk and into the new development. Take the first right onto Castle Wood Road and the property can be found on the right hand side marked by our For Sale Board.



view this property online allenandharris.co.uk/Property/PNR106704



Property Ref:
PNR106704 - 0003

1. MONEY LAUNDERING REGULATIONS Intending purchasers will be asked to produce identification documentation at a later stage and we would ask for your co-operation in order that there is no delay in agreeing the sale. 2. These particulars do not constitute part or all of an offer or contract. 3. The measurements indicated are supplied for guidance only and as such must be considered incorrect. Potential buyers are advised to recheck measurements before committing to any expense. 4. We have not tested any apparatus, equipment, fixtures or services and it is in the buyers interest to check the working condition of any appliances. 5. Where an EPC, or a Home Report (Scotland only) is held for this property, it is available for inspection at the branch by appointment. If you require a printed version of a Home Report, you will need to pay a reasonable production charge reflecting printing and other costs. 6. We are not able to offer an opinion either written or verbal on the content of these reports and this must be obtained from your legal representative. 7. Whilst we take care in preparing these reports, a buyer should ensure that his/her legal representative confirms as soon as possible all matters relating to title including the extent and boundaries of the property and other important matters before exchange of contracts.

Allen & Harris is a trading name of Sequence (UK) Limited which is registered in England and Wales under company number 4268443, Registered Office is Cumbria House, 16-20 Hockliffe Street, Leighton Buzzard, Bedfordshire, LU7 1GN. VAT Registration Number is 500 2481 05.

allen & harris



029 2070 5528



penarth@allenandharris.co.uk



6 Andrews Buildings, Stanwell Road, PENARTH,
Wales, CF64 2AA



allenandharris.co.uk