



**Fairthorne Way, Shrivenham Swindon SN6 8EB**

  
allen & harris



**welcome to**

**Fairthorne Way, Shrivenham Swindon**

Detached Family Home - Four Double Bedrooms - Four Bathrooms- Spacious Living Room - Separate Dining Room - Kitchen - Study - Generous Garden - Oversized Single Garage - Driveway Parking For Several Cars - This is the Ideal family home! Call today to view!



### Entrance Hall

Front aspect door and window, radiator, stairs to the first floor and storage cupboard.

### Dining Room

16' 10" x 10' 10" ( 5.13m x 3.30m )

Front aspect window, radiator, feature fireplace with open fire and double doors to the living room.

### Kitchen

19' 10" x 10' ( 6.05m x 3.05m )

Fitted kitchen comprising of a range of eye and base level units, worksurfaces with splash backs, space for a range cooker with cooker hood, plumbing for dishwasher, one and half bowl sink with drainer, further appliance space, radiator, front aspect window, door to the utility room, storage cupboard and door to the living room.

### Living Room

24' 1" x 14' 5" ( 7.34m x 4.39m )

Rear aspect bi-folding doors and two sets of patio doors to the garden, rear aspect skylights, coat cupboard, feature beams , under floor heating and door to the study.

### Study

8' 11" x 8' 4" ( 2.72m x 2.54m )

Rear aspect window, under floor heating and door to the shower room.

### Shower Room

Fitted suite comprising of shower cubicle with shower, low level wc, Tokyo style hand wash basin, towel radiator, under floor heating, part tiled walls, extractor fan and side aspect window.

### Utility Room

8' 1" x 6' 5" ( 2.46m x 1.96m )

Side aspect door to the side passage, eye level unit, work surface with single bowl sink with drainer, plumbing for a washing machine, further storage and stairs leading to guest suite.

### Landing

Skylight, doors to bedroom and shower room.

### Bedroom Four

9' 5" x 8' 7" ( 2.87m x 2.62m )

Front aspect window and radiator.

### Shower Room

Re-fitted suite comprising of double shower enclosure with shower, low level wc, hand wash basin with vanity unit, towel radiator, part tiled walls, airing cupboard, extractor fan and rear aspect window.

### First Floor Landing

Rear aspect window and loft access.

### Bedroom One

13' 10" x 9' 11" ( 4.22m x 3.02m )

Front aspect window, radiator and door to the en-suite.

### En-Suite

Re-fitted suite offering walk in shower enclosure with shower, low level wc, hand wash basin with vanity unit, part tiled walls, heated towel radiator, extractor fan and front aspect window.

### Bedroom Two

10' 11" x 9' 11" ( 3.33m x 3.02m )

Front aspect window, radiator and built in wardrobe.

### Bedroom Three

11' x 9' 11" ( 3.35m x 3.02m )

Rear aspect window, built in wardrobes and radiator.

### Family Bathroom

Fitted suite comprising of panel enclosed bath with shower over, low level wc, hand wash basin with vanity unit, part tiled walls, heated towel rail and rear aspect window.

### Rear Garden

Enclosed by panel fencing, patio area with pagoda, laid to lawn with mature shrubs and trees, shed and door to the side passage.

### Side Passage

Rear aspect door to the garden, skylights, light and power access to the garage and door to the utility room.

### Integral Garage

17' 7" x 11' 10" ( 5.36m x 3.61m )

Electric roller door, light and power with passage to the garden.



**view this property online** [allenandharris.co.uk/Property/HWT106073](http://allenandharris.co.uk/Property/HWT106073)

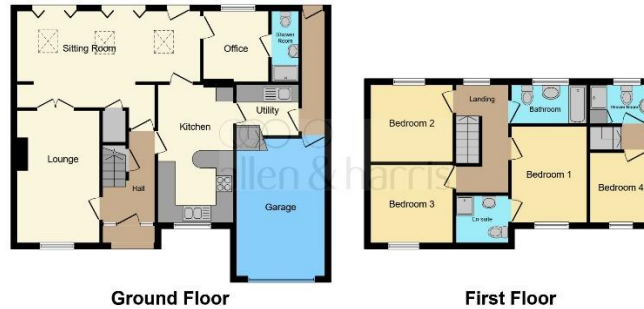


welcome to

## Fairthorne Way, Shrivenham Swindon

- Detached Family Home
- Four Double Bedrooms
- No Onward Chain
- Three Reception Rooms
- Four Bathrooms

Tenure: Freehold EPC Rating: C



**£775,000**

This floor plan is for illustrative purposes only. It is not drawn to scale. Any measurements, floor areas (including any total floor area), openings and orientation are approximate. No details are guaranteed, they cannot be relied upon for any purpose and they do not form part of any agreement. No liability is taken for any error, omission or misstatement. A party must rely upon its own inspection(s). Powered by www.focalagent.com



Please note the marker reflects the postcode not the actual property

**view this property online** [allenandharris.co.uk/Property/HWT106073](https://allenandharris.co.uk/Property/HWT106073)



Property Ref:  
HWT106073 - 0006

1. MONEY LAUNDERING REGULATIONS Intending purchasers will be asked to produce identification documentation at a later stage and we would ask for your co-operation in order that there is no delay in agreeing the sale. 2. These particulars do not constitute part or all of an offer or contract. 3. The measurements indicated are supplied for guidance only and as such must be considered incorrect. Potential buyers are advised to recheck measurements before committing to any expense. 4. We have not tested any apparatus, equipment, fixtures or services and it is in the buyers interest to check the working condition of any appliances. 5. Where an EPC, or a Home Report (Scotland only) is held for this property, it is available for inspection at the branch by appointment. If you require a printed version of a Home Report, you will need to pay a reasonable production charge reflecting printing and other costs. 6. We are not able to offer an opinion either written or verbal on the content of these reports and this must be obtained from your legal representative. 7. Whilst we take care in preparing these reports, a buyer should ensure that his/her legal representative confirms as soon as possible all matters relating to title including the extent and boundaries of the property and other important matters before exchange of contracts.

Allen & Harris is a trading name of Sequence (UK) Limited which is registered in England and Wales under company number 4268443, Registered Office is Cumbria House, 16-20 Hockliffe Street, Leighton Buzzard, Bedfordshire, LU7 1GN. VAT Registration Number is 500 2481 05.

 **allen & harris**



**01793 762407**



[Highworth@allenandharris.co.uk](mailto:Highworth@allenandharris.co.uk)



40A High Street, HIGHWORTH, Wiltshire, SN6 7AQ



**[allenandharris.co.uk](https://allenandharris.co.uk)**