



**Twickenham Road, BIRMINGHAM B44 0NS**

**welcome to**

## **Twickenham Road, BIRMINGHAM**

A three bedroom end of terrace property offered with no onward chain.

### **Agent Note**

Council Tax Band is A.

### **Entrance Hall**

Storage cupboard, double glazed window to side and central heating radiator.

### **Lounge**

8' 3" and recess x 10' 7" ( 2.51m and recess x 3.23m )  
Double glazed bay window to front and central heating radiator.

### **Dining Room**

15' 10" x 10' 10" into recess ( 4.83m x 3.30m into recess )  
Double glazed sliding door to garden and central heating radiator.

### **Kitchen**

11' 3" and recess x 5' 11" ( 3.43m and recess x 1.80m )  
Double glazed window to rear, wall and base units, integrated hob and oven and central heating radiator.

### **Landing**

Double glazed window to side with access to loft.

### **Bedroom One**

12' 9" x 9' 9" into recess ( 3.89m x 2.97m into recess )  
Double glazed window to front and central heating radiator.

### **Bedroom Two**

13' 2" x 10' into recess ( 4.01m x 3.05m into recess )  
Double glazed window to rear and central heating radiator.

### **Bedroom Three**

9' x 6' 11" ( 2.74m x 2.11m )  
Double glazed window to front and central heating

radiator.

### **Shower Room**

Shower cubicle with separate wc, pedestal wash hand basin, central heating radiator and double glazed window to rear.

### **Rear Garden**

Patio area and lawn.







***view this property online*** [shipways.co.uk/Property/GRB112223](https://shipways.co.uk/Property/GRB112223)



welcome to

## Twickenham Road, BIRMINGHAM

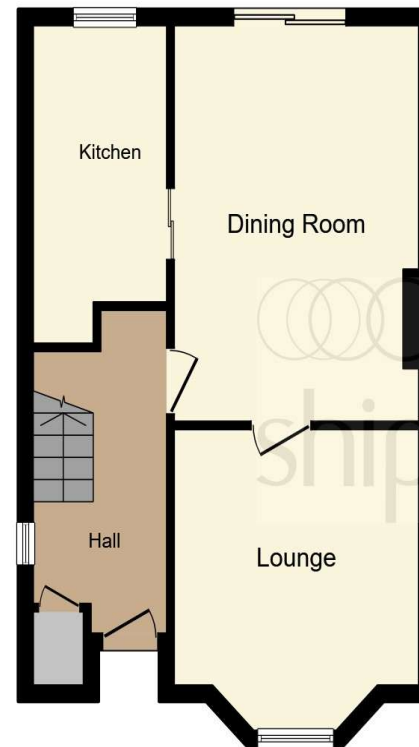
- NO CHAIN
- TWO RECEPTION ROOMS
- DRIVEWAY
- LOCAL SCHOOLS AND SHOPS
- TRANSPORT LINKS

Tenure: Freehold EPC Rating: D

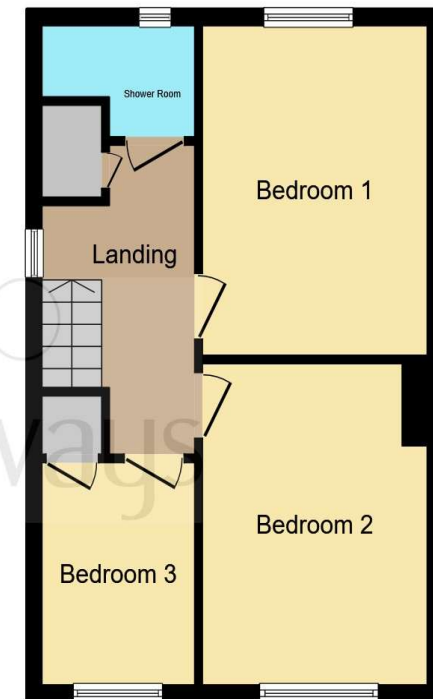
Council Tax Band: A

offers in excess of

**£200,000**



Ground Floor



First Floor

This floor plan is for illustrative purposes only. It is not drawn to scale. Any measurements, floor areas (including any total floor area), openings and orientation are approximate. No details are guaranteed, they cannot be relied upon for any purpose and they do not form part of any agreement. No liability is taken for any error, omission or misstatement. A party must rely upon its own inspection(s). Powered by [www.focalagent.com](http://www.focalagent.com)

view this property online [shipways.co.uk/Property/GRB112223](http://shipways.co.uk/Property/GRB112223)



Property Ref:  
GRB112223 - 0005

1. MONEY LAUNDERING REGULATIONS Intending purchasers will be asked to produce identification documentation at a later stage and we would ask for your co-operation in order that there is no delay in agreeing the sale. 2. These particulars do not constitute part or all of an offer or contract. 3. The measurements indicated are supplied for guidance only and as such must be considered incorrect. Potential buyers are advised to recheck measurements before committing to any expense. 4. We have not tested any apparatus, equipment, fixtures or services and it is in the buyers interest to check the working condition of any appliances. 5. Where an EPC, or a Home Report (Scotland only) is held for this property, it is available for inspection at the branch by appointment. If you require a printed version of a Home Report, you will need to pay a reasonable production charge reflecting printing and other costs. 6. We are not able to offer an opinion either written or verbal on the content of these reports and this must be obtained from your legal representative. 7. Whilst we take care in preparing these reports, a buyer should ensure that his/her legal representative confirms as soon as possible all matters relating to title including the extent and boundaries of the property and other important matters before exchange of contracts.

Shipways is a trading name of Sequence (UK) Limited which is registered in England and Wales under company number 4268443, Registered Office is Cumbria House, 16-20 Hockliffe Street, Leighton Buzzard, Bedfordshire, LU7 1GN. VAT Registration Number is 500 2481 05.



**0121 358 2281**



[greatbarr@shipways.co.uk](mailto:greatbarr@shipways.co.uk)



905 Walsall Road, Great Barr, BIRMINGHAM,  
West Midlands, B42 1TN



[shipways.co.uk](http://shipways.co.uk)