



Beechglade, Birmingham B20 1LA

welcome to

Beechglade, Birmingham

DETACHED FAMILY HOMENO CHAIN***POTENTIAL FOR IMPROVEMENT***TWO RECEPTION ROOMS***SOUGHT AFTER LOCATION***

Agent Note

The Council Tax Band is D.

Lounge

15' 6" x 13' 5" (4.72m x 4.09m)

Double glazed window to front, gas fire and radiator.

Dining Room

16' 8" x 10' 10" (5.08m x 3.30m)

Double glazed window to rear, double glazed french doors to rear and under stairs storage cupboard.

Kitchen

10' 9" max x 16' 11" (3.28m max x 5.16m)

Wall and base units with integrated cooker and gas hob. Double glazed window to rear.

Wet Room

Shower, pedestal sink, w.c, radiator.

Landing

Double glazed window to side and loft access.

Bedroom One

14' 1" x 9' 4" (4.29m x 2.84m)

Double glazed window to front, radiator and fitted wardrobes.

Bedroom Two

12' 5" x 8' 7" (3.78m x 2.62m)

Double glazed window to rear, radiator and fitted wardrobes.

Bedroom Three

9' 9" x 7' 1" (2.97m x 2.16m)

Double glazed window to front, radiator and fitted wardrobes.

Shower Room

Walk in shower, w.c, wash hand basin vanity unit, heated towel rail.





check out more properties at shipways.co.uk



welcome to

Beechglade, Birmingham

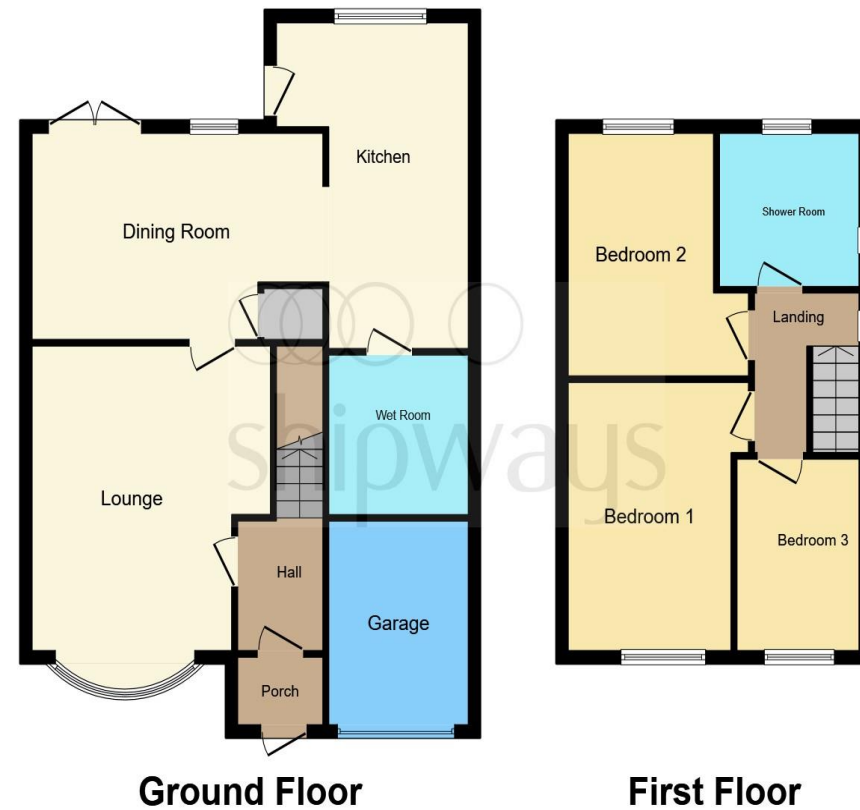
- NO CHAIN
- SOUGHT AFTER HANDSWORTH WOOD LOCATION
- CUL DE SAC
- DRIVEWAY
- WELL MAINTAINED GARDENS

Tenure: Freehold EPC Rating: Awaited

Council Tax Band: C

offers over

£375,000



This floor plan is for illustrative purposes only. It is not drawn to scale. Any measurements, floor areas (including any total floor area), openings and orientation are approximate. No details are guaranteed, they cannot be relied upon for any purpose and they do not form part of any agreement. No liability is taken for any error, omission or misstatement. A party must rely upon its own inspection(s). Powered by www.focalagent.com

check out more properties at shipways.co.uk



Property Ref:
GRB111896 - 0003

1. MONEY LAUNDERING REGULATIONS Intending purchasers will be asked to produce identification documentation at a later stage and we would ask for your co-operation in order that there is no delay in agreeing the sale. 2. These particulars do not constitute part or all of an offer or contract. 3. The measurements indicated are supplied for guidance only and as such must be considered incorrect. Potential buyers are advised to recheck measurements before committing to any expense. 4. We have not tested any apparatus, equipment, fixtures or services and it is in the buyers interest to check the working condition of any appliances. 5. Where an EPC, or a Home Report (Scotland only) is held for this property, it is available for inspection at the branch by appointment. If you require a printed version of a Home Report, you will need to pay a reasonable production charge reflecting printing and other costs. 6. We are not able to offer an opinion either written or verbal on the content of these reports and this must be obtained from your legal representative. 7. Whilst we take care in preparing these reports, a buyer should ensure that his/her legal representative confirms as soon as possible all matters relating to title including the extent and boundaries of the property and other important matters before exchange of contracts.



0121 358 2281



greatbarr@shipways.co.uk



905 Walsall Road, Great Barr, BIRMINGHAM,
West Midlands, B42 1TN



shipways.co.uk