



Merrions Close, Birmingham B43 7AT

welcome to

Merrions Close, Birmingham

SEMI DETACHEDTHREE BEDROOMS***LOUNGE***KITCHEN/DINER***OFF ROAD PARKING***DOUBLE GLAZED***CENTRAL HEATING***

Agent Note

Council Tax Band B

Approach

Driveway door into

Entrance Hall

Ceiling light point, carpeted

Entrance Porch

UPVC Door , Double glazed porch

Lounge

12' 8" into bay x 12' 6" (3.86m into bay x 3.81m)

Double glazed bay window to front, log burner, three wall lights, laminate flooring and radiator.

Kitchen Diner

15' 7" x 10' 11" (4.75m x 3.33m)

Double glazed window and doors to rear, wall and base units with work surfaces over, sink and drainer unit, integrated oven, gas hob, free standing fridge freezer, washer dryer, laminate flooring, ceiling light point and radiator.



**Landing**

Double glazed window to side, carpet flooring and loft access.

Bedroom One

10' 11" x 9' 8" (3.33m x 2.95m)

Double glazed window to front, carpet flooring, ceiling light point and radiator.

Bedroom Two

10' 11" x 8' 10" (3.33m x 2.69m)

Double glazed window to rear, ceiling light point and radiator.

Bedroom Three

6' 11" x 6' 5" (2.11m x 1.96m)

Double glazed window to front, cupboard housing central heating boiler, ceiling light point and radiator.

Bathroom

Double glazed window to rear, double shower, wash hand basin, low level WC, half tiled walls, ceiling light point and heated towel radiator.

Rear Garden

Patio area, lawned area and two wooden sheds.



view this property online shipways.co.uk/Property/GRB111602



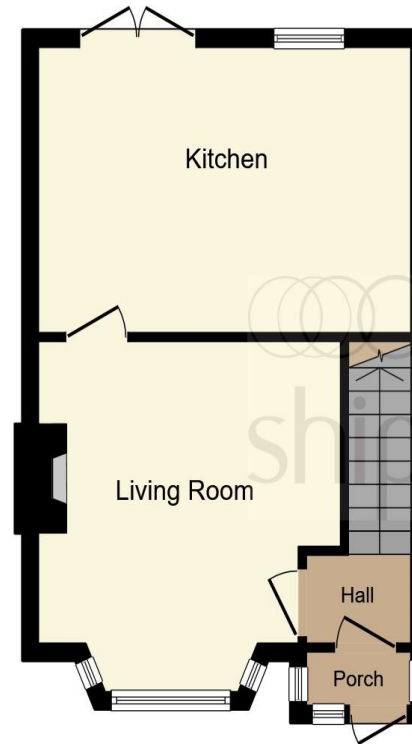
welcome to

Merrions Close, Birmingham

- SEMI DETACHED
- THREE BEDROOMS
- LOUNGE
- KITCHEN/DINER
- OFF ROAD PARKING

Tenure: Freehold EPC Rating: C

£190,000



Ground Floor



First Floor

This floor plan is for illustrative purposes only. It is not drawn to scale. Any measurements, floor areas (including any total floor area), openings and orientation are approximate. No details are guaranteed, they cannot be relied upon for any purpose and they do not form part of any agreement. No liability is taken for any error, omission or misstatement. A party must rely upon its own inspection(s). Powered by www.focalagent.com

view this property online shipways.co.uk/Property/GRB111602



Property Ref:
GRB111602 - 0003

1. MONEY LAUNDERING REGULATIONS Intending purchasers will be asked to produce identification documentation at a later stage and we would ask for your co-operation in order that there is no delay in agreeing the sale. 2. These particulars do not constitute part or all of an offer or contract. 3. The measurements indicated are supplied for guidance only and as such must be considered incorrect. Potential buyers are advised to recheck measurements before committing to any expense. 4. We have not tested any apparatus, equipment, fixtures or services and it is in the buyers interest to check the working condition of any appliances. 5. Where an EPC, or a Home Report (Scotland only) is held for this property, it is available for inspection at the branch by appointment. If you require a printed version of a Home Report, you will need to pay a reasonable production charge reflecting printing and other costs. 6. We are not able to offer an opinion either written or verbal on the content of these reports and this must be obtained from your legal representative. 7. Whilst we take care in preparing these reports, a buyer should ensure that his/her legal representative confirms as soon as possible all matters relating to title including the extent and boundaries of the property and other important matters before exchange of contracts.

Shipways is a trading name of Sequence (UK) Limited which is registered in England and Wales under company number 4268443, Registered Office is Cumbria House, 16-20 Hockliffe Street, Leighton Buzzard, Bedfordshire, LU7 1GN. VAT Registration Number is 500 2481 05.



0121 358 2281



greatbarr@shipways.co.uk



905 Walsall Road, Great Barr, BIRMINGHAM,
West Midlands, B42 1TN



shipways.co.uk