



**Lime Tree Road, Walsall WS5 4HA**

**welcome to**

## **Lime Tree Road, Walsall**

**\*\*\*SEMI DETACHED\*\*\*THREE BEDROOMS\*\*\*LOUNGE\*\*\*KITCHEN/DINER\*\*\*DOUBLE GLAZING\*\*\*CENTRAL HEATING\*\*\*SEPARATE ANNEX/BEDROOM FOUR\*\*\***

### **Agent Note**

Council Tax Band B

### **Approach**

Paved driveway for 3+ cars, gate to side providing access to the rear. Door into

### **Entrance Hall**

Stairs to the first floor, ceiling light point, doors to the lounge and kitchen

### **Lounge**

18' 3" x 10' 7" ( 5.56m x 3.23m )

Double glazed window to front, two wall lights, fireplace, radiator, french doors to rear and door to:-

### **Kitchen**

18' 2" x 11' 8" ( 5.54m x 3.56m )

Double glazed window to front, fitted kitchen with wall and base units with work surfaces over, stainless steel sink and drainer with one a half bowls, tiling to walls, electric oven, electric hob with cooker hood over, integrated dishwasher, tumble dryer and washing machine, two radiators, door to entrance hall and patio door to rear.







### **Landing**

Loft access to boarded loft space.

### **Bedroom One**

11' 3" x 10' 3" ( 3.43m x 3.12m )  
Double glazed window to front, walk in wardrobe, ceiling light point and radiator.

### **Bedroom Two**

12' 7" x 8' 8" ( 3.84m x 2.64m )  
Double glazed window to front, fitted wardrobes, ceiling light point and radiator.

### **Bedroom Three**

8' 4" x 7' 8" ( 2.54m x 2.34m )  
Double glazed window to rear, storage cupboard housing boiler, ceiling light point and radiator.

### **Bathroom**

Double glazed window to side, bath, shower, wash hand basin, tiling to walls, ceiling light point and radiator.

### **Separate W.C**

Double glazed window to rear, low level WC, tiling to walls and ceiling light point.

### **Rear Garden**

Low maintenance rear garden with artificial lawn, patio area, fence borders, gate to front and UPVC door into

### **Annex**

Two double glazed windows to side, built in surround sound, wash hand basin, low level WC, ceiling light point and radiator.



***view this property online*** [shipways.co.uk/Property/GRB110396](http://shipways.co.uk/Property/GRB110396)



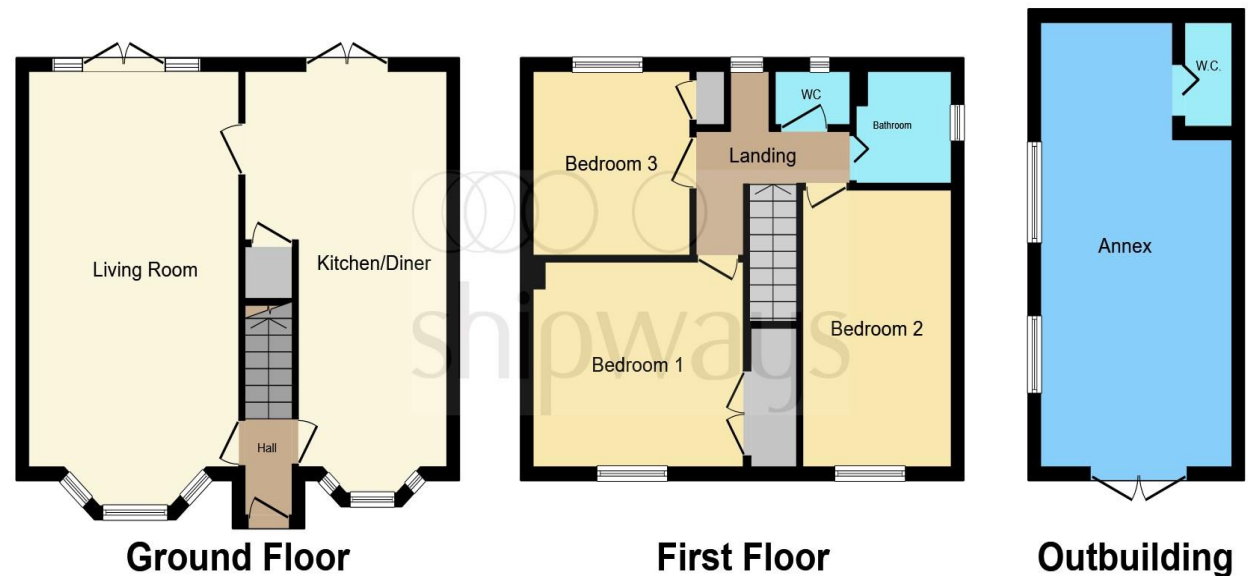
welcome to

## Lime Tree Road, Walsall

- SEMI DETACHED
- THREE BEDROOMS
- LOUNGE
- KITCHEN/DINER
- DOUBLE GLAZING

Tenure: Freehold EPC Rating: D

**£250,000**



This floor plan is for illustrative purposes only. It is not drawn to scale. Any measurements, floor areas (including any total floor area), openings and orientation are approximate. No details are guaranteed, they cannot be relied upon for any purpose and they do not form part of any agreement. No liability is taken for any error, omission or misstatement. A party must rely upon its own inspection(s). Powered by [www.focalagent.com](http://www.focalagent.com)

**view this property online** [shipways.co.uk/Property/GRB110396](http://shipways.co.uk/Property/GRB110396)



Property Ref:  
GRB110396 - 0002

1. MONEY LAUNDERING REGULATIONS Intending purchasers will be asked to produce identification documentation at a later stage and we would ask for your co-operation in order that there is no delay in agreeing the sale. 2. These particulars do not constitute part or all of an offer or contract. 3. The measurements indicated are supplied for guidance only and as such must be considered incorrect. Potential buyers are advised to recheck measurements before committing to any expense. 4. We have not tested any apparatus, equipment, fixtures or services and it is in the buyers interest to check the working condition of any appliances. 5. Where an EPC, or a Home Report (Scotland only) is held for this property, it is available for inspection at the branch by appointment. If you require a printed version of a Home Report, you will need to pay a reasonable production charge reflecting printing and other costs. 6. We are not able to offer an opinion either written or verbal on the content of these reports and this must be obtained from your legal representative. 7. Whilst we take care in preparing these reports, a buyer should ensure that his/her legal representative confirms as soon as possible all matters relating to title including the extent and boundaries of the property and other important matters before exchange of contracts.

Shipways is a trading name of Sequence (UK) Limited which is registered in England and Wales under company number 4268443, Registered Office is Cumbria House, 16-20 Hockliffe Street, Leighton Buzzard, Bedfordshire, LU7 1GN. VAT Registration Number is 500 2481 05.



**0121 358 2281**



[greatbarr@shipways.co.uk](mailto:greatbarr@shipways.co.uk)



905 Walsall Road, Great Barr, BIRMINGHAM,  
West Midlands, B42 1TN



[shipways.co.uk](http://shipways.co.uk)