



**Brackendale Drive, Walsall WS5 4DA**

**welcome to**

## **Brackendale Drive, Walsall**

\*\*\*DETACHED\*\*\*THREE BEDROOMS MASTER WITH EN SUITE\*\*\*LOUNGE\*\*\*KITCHEN\*\*\*CONSERVATORY\*\*\*DOWNSTAIRS WC\*\*\*INTEGRAL GARAGE\*\*\*DOUBLE GLAZING & CENTRAL HEATING\*\*\*

### **Note**

Council tax band: C

### **Front Garden**

Lawned area and parking to front.

### **Lounge**

19' x 11' 3" ( 5.79m x 3.43m )

Double glazed door to rear, double glazed doors leading into conservatory, laminate flooring, two ceiling light points and radiator.

### **Kitchen**

11' 4" x 7' ( 3.45m x 2.13m )

Double glazed window to front, wall and base units with work surfaces over, sink and drainer unit, integrated oven, gas hob, plumbing for washing machine, vinyl flooring and ceiling light point.

### **Cloakroom**

Double glazed window to side, wash hand basin and low level WC.

### **Conservatory**

9' 7" x 8' 2" ( 2.92m x 2.49m )

Double glazed windows and door with tiled floor.





### **Landing**

Double glazed window to side, airing cupboard, loft access, carpet flooring, ceiling light point and loft access.

### **Bedroom One**

13' 7" x 11' 5" ( 4.14m x 3.48m )  
Double glazed window to front, laminate flooring, ceiling light point and radiator.

### **En Suite**

Double glazed window to front, double shower, wash hand basin, low level WC, vinyl flooring, ceiling light point and radiator.

### **Bedroom Two**

11' 10" x 9' 8" ( 3.61m x 2.95m )  
Double glazed window to rear, carpet flooring, ceiling light point and radiator.

### **Bedroom Three**

9' 1" x 7' 11" ( 2.77m x 2.41m )  
Double glazed window to rear, carpet flooring, ceiling light point and radiator.

### **Bathroom**

Double glazed window, bath with shower over, wash hand basin, low level WC, half tiled walls, vinyl flooring and heated towel radiator.

### **Rear Garden**

slabbed area, lawned area, side access and wooden shed.

### **Integral Garage**

16' 5" x 7' 8" ( 5.00m x 2.34m )  
Having up and over door.



***check out more properties at*** [shipways.co.uk](http://shipways.co.uk)



welcome to

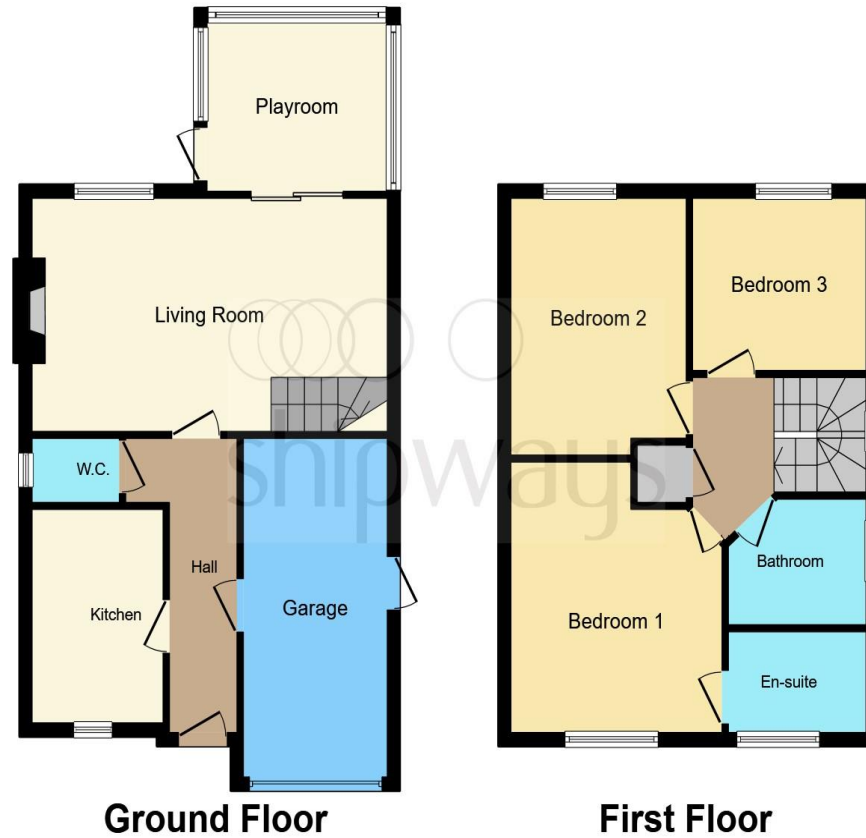
## Brackendale Drive, Walsall

- DETACHED
- THREE BEDROOMS MASTER WITH EN SUITE
- LOUNGE
- KITCHEN
- CONSERVATORY

Tenure: Freehold EPC Rating: D

offers over

**£260,000**



This floorplan is for illustrative purposes only and is not drawn to scale. Measurements, floor-areas, openings and orientations are approximate. They should not be relied upon for any purpose and do not form any part of an agreement. No liability is taken for any error or mis-statement. All parties must rely on their own inspections.

check out more properties at [shipways.co.uk](http://shipways.co.uk)



Property Ref:  
GRB110668 - 0005

1. MONEY LAUNDERING REGULATIONS Intending purchasers will be asked to produce identification documentation at a later stage and we would ask for your co-operation in order that there is no delay in agreeing the sale. 2. These particulars do not constitute part or all of an offer or contract. 3. The measurements indicated are supplied for guidance only and as such must be considered incorrect. Potential buyers are advised to recheck measurements before committing to any expense. 4. We have not tested any apparatus, equipment, fixtures or services and it is in the buyers interest to check the working condition of any appliances. 5. Where an EPC, or a Home Report (Scotland only) is held for this property, it is available for inspection at the branch by appointment. If you require a printed version of a Home Report, you will need to pay a reasonable production charge reflecting printing and other costs. 6. We are not able to offer an opinion either written or verbal on the content of these reports and this must be obtained from your legal representative. 7. Whilst we take care in preparing these reports, a buyer should ensure that his/her legal representative confirms as soon as possible all matters relating to title including the extent and boundaries of the property and other important matters before exchange of contracts.

Shipways is a trading name of Sequence (UK) Limited which is registered in England and Wales under company number 4268443, Registered Office is Cumbria House, 16-20 Hockliffe Street, Leighton Buzzard, Bedfordshire, LU7 1GN. VAT Registration Number is 500 2481 05.

shipways



**0121 358 2281**



greatbarr@shipways.co.uk



905 Walsall Road, Great Barr, BIRMINGHAM,  
West Midlands, B42 1TN



**shipways.co.uk**