



Bakers Lane, Sutton Coldfield B73 6XD

welcome to

Bakers Lane, Sutton Coldfield

SEMI DETACHEDTHREE BEDROOMS & STUDY***THROUGH LOUNGE***OFF ROAD PARKING***GARAGE***DOUBLE GLAZING***CENTRAL HEATING ***SOUGHT AFTER LOCATION***

Note

Council tax band: D

Front Garden

Dropped kerb and parking

Lounge

11' 9" into bay x 12' 7" (3.58m into bay x 3.84m)
Double glazed bay window to front, laminate flooring, ceiling light point and radiator.

Dining Room

9' 1" x 8' 7" (2.77m x 2.62m)
Double glazed doors to rear leading to garden, wall lights, ceiling light point, radiator and open into kitchen.

Kitchen

13' 1" x 9' 2" (3.99m x 2.79m)
Double glazed window and door to rear, fitted kitchen with wall and base units with work surfaces over, sink and drainer unit, electric cooker and hob, gas supply, space and plumbing for washer/dryer, integrated dish washer, laminate flooring, cupboard with wall mounted central heating boiler, understairs cupboard and two ceiling light points.





Landing

Having loft access.

Bedroom One

13' 5" to front of wardrobes x 8' 9" not into bay (4.09m to front of wardrobes x 2.67m not into bay)

Double glazed bay window to front, built in wardrobes, carpet flooring, ceiling light point and radiator.

Bedroom Two

12' 3" x 9' 1" (3.73m x 2.77m)

Double glazed window to rear, storage cupboard, carpet flooring, ceiling light point and radiator.

Bedroom Three

11' 9" x 5' 5" (3.58m x 1.65m)

Double glazed window to front, carpet flooring, ceiling light point and radiator.

Study/Bedroom Four

9' 1" x 5' 6" (2.77m x 1.68m)

Double glazed window to rear, carpet flooring, ceiling light point and radiator.

Shower Room

Double glazed window to rear, shower cubicle, wash hand basin, low level WC, tiled walls, carpet flooring, ceiling light point and radiator.

Rear Garden

Private garden, paved area, mainly laid to lawn with wooden shed to rear.

Garage

11' 1" x 5' 5" (3.38m x 1.65m)

Brick built integral garage.



view this property online shipways.co.uk/Property/GRB110611



welcome to

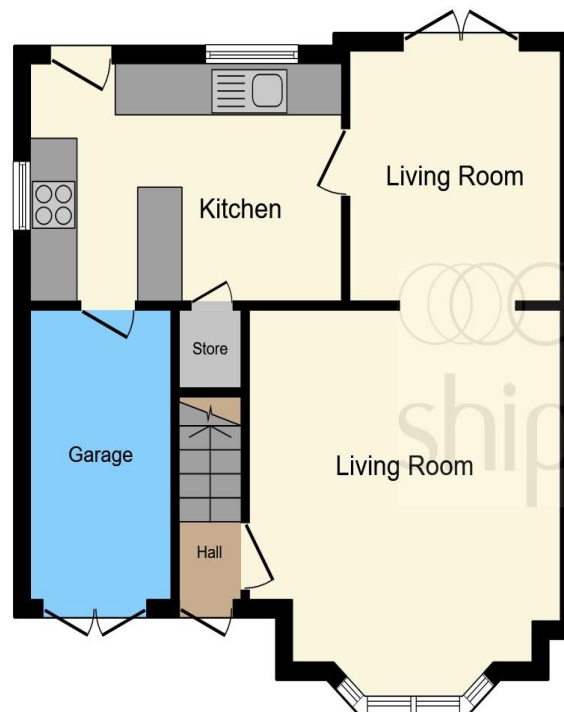
Bakers Lane, Sutton Coldfield

- SEMI DETACHED
- THREE BEDROOMS & STUDY
- THROUGH LOUNGE
- OFF ROAD PARKING
- GARAGE

Tenure: Freehold EPC Rating: D

offers in excess of

£300,000



Ground Floor



First Floor

This floorplan is for illustrative purposes only and is not drawn to scale. Measurements, floor-areas, openings and orientations are approximate. They should not be relied upon for any purpose and do not form any part of an agreement. No liability is taken for any error or mis-statement. All parties must rely on their own inspections.

view this property online shipways.co.uk/Property/GRB110611



Property Ref:
GRB110611 - 0008

1. MONEY LAUNDERING REGULATIONS Intending purchasers will be asked to produce identification documentation at a later stage and we would ask for your co-operation in order that there is no delay in agreeing the sale. 2. These particulars do not constitute part or all of an offer or contract. 3. The measurements indicated are supplied for guidance only and as such must be considered incorrect. Potential buyers are advised to recheck measurements before committing to any expense. 4. We have not tested any apparatus, equipment, fixtures or services and it is in the buyers interest to check the working condition of any appliances. 5. Where an EPC, or a Home Report (Scotland only) is held for this property, it is available for inspection at the branch by appointment. If you require a printed version of a Home Report, you will need to pay a reasonable production charge reflecting printing and other costs. 6. We are not able to offer an opinion either written or verbal on the content of these reports and this must be obtained from your legal representative. 7. Whilst we take care in preparing these reports, a buyer should ensure that his/her legal representative confirms as soon as possible all matters relating to title including the extent and boundaries of the property and other important matters before exchange of contracts.

Shipways is a trading name of Sequence (UK) Limited which is registered in England and Wales under company number 4268443, Registered Office is Cumbria House, 16-20 Hockliffe Street, Leighton Buzzard, Bedfordshire, LU7 1GN. VAT Registration Number is 500 2481 05.

shipways



0121 358 2281



greatbarr@shipways.co.uk



905 Walsall Road, Great Barr, BIRMINGHAM,
West Midlands, B42 1TN



shipways.co.uk