



**Pages Lane, Birmingham B43 6LL**



**welcome to**

## **Pages Lane, Birmingham**

**\*\*\*DETACHED BUNGALOW\*\*\*TWO BEDROOMS\*\*\*KITCHEN/DINER\*\*\*UTILITY\*\*\*CONSERVATORY\*\*\*OFF ROAD\*\*\*SPACIOUS\*\*\*PARKING\*\*\*GARAGE\*\*\*NO CHAIN\*\*\***

### **Front Garden**

Dropped kerb and tarmac to front.

### **Entrance Porch**

Double glazed door to front.

### **Entrance Hall**

Double glazed door to front, cupboard, ceiling light point, radiator and loft access with loft ladder.

### **Lounge**

19' 9" into bay x 13' 10" ( 6.02m into bay x 4.22m )  
Two double glazed windows to front, wall light, ceiling light point, radiator and double glazed doors leading to conservatory.

### **Kitchen / Diner**

14' 5" x 13' 10" ( 4.39m x 4.22m )  
Double glazed windows to front and side, wall and base units with work surfaces over, sink and drainer unit, central heating boiler, ceiling light point, radiator and door to utility room.





***view this property online*** [shipways.co.uk/Property/GRB108164](http://shipways.co.uk/Property/GRB108164)



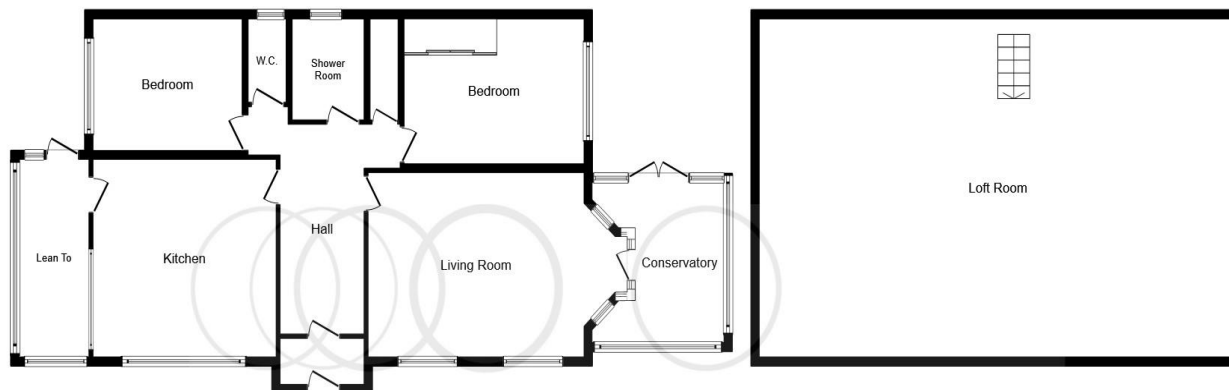
welcome to

## Pages Lane, Birmingham

- DETACHED BUNGALOW
- TWO BEDROOMS
- KITCHEN/DINER
- CONSERVATORY
- OFF ROAD PARKING

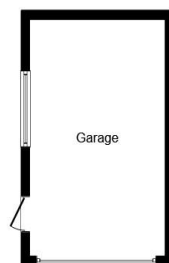
Tenure: Freehold EPC Rating: D

# £320,000



Ground Floor

Loft Floor



Garage

This plan is for illustration purposes only and may not be representative of the property. Plan not to scale.

Powered by audioagent.com

view this property online [shipways.co.uk/Property/GRB108164](https://shipways.co.uk/Property/GRB108164)

see all our properties on [zoopla.co.uk](https://zoopla.co.uk) | [rightmove.co.uk](https://rightmove.co.uk) | [shipways.co.uk](https://shipways.co.uk)



Property Ref:  
GRB108164 - 0003

1. MONEY LAUNDERING REGULATIONS Intending purchasers will be asked to produce identification documentation at a later stage and we would ask for your co-operation in order that there is no delay in agreeing the sale. 2. These particulars do not constitute part or all of an offer or contract. 3. The measurements indicated are supplied for guidance only and as such must be considered incorrect. Potential buyers are advised to recheck measurements before committing to any expense. 4. We have not tested any apparatus, equipment, fixtures or services and it is in the buyers interest to check the working condition of any appliances. 5. Where an EPC, or a Home Report (Scotland only) is held for this property, it is available for inspection at the branch by appointment. If you require a printed version of a Home Report, you will need to pay a reasonable production charge reflecting printing and other costs. 6. We are not able to offer an opinion either written or verbal on the content of these reports and this must be obtained from your legal representative. 7. Whilst we take care in preparing these reports, a buyer should ensure that his/her legal representative confirms as soon as possible all matters relating to title including the extent and boundaries of the property and other important matters before exchange of contracts.

  
shipways



**0121 358 2281**



greatbarr@shipways.co.uk



905 Walsall Road, Great Barr, BIRMINGHAM,  
West Midlands, B42 1TN



**shipways.co.uk**