



**Longmeadow Crescent, Birmingham B34 7NH**

**welcome to**

## **Longmeadow Crescent, Birmingham**

\*\*\* IMMACULATLY PRESENTED \*\*\* THREE BEDROOMS \*\*\* LOUNGE \*\*\* KITCHEN DINER \*\*\* UTILITY ROOM \*\*\* DOWNSTAIRS WC \*\*\* FAMILY BATHROOM \*\*\* LARGE GARDEN \*\*\* DRIVEWAY \*\*\* FREEHOLD \*\*\* POPULAR RESIDENTIAL LOCATION \*\*\* CALL SHIPWAYS TO VIEW \*\*\*

### **Agent Note**

Council Tax Band B.

### **Entrance Porch**

Double glazed window to front and door to hall.

### **Entrance Hall**

Meter cupboard, stairs, radiator and ceiling lightpoint.

### **Lounge**

13' 1" x 11' ( 3.99m x 3.35m )

Double glazed window to front, double doors to kitchen, radiator and ceiling lightpoint.

### **Kitchen**

13' max x 19' 1" max ( 3.96m max x 5.82m max )

Double glazed window to rear, double glazed french doors to garden, door to utility, wall and base units, built in dishwasher, wall and base units, storage cupboard, one and half steel sink and drainer, storage cupboard and ceiling lightpoint.

### **Utility Room**

7' max x 14' ( 2.13m max x 4.27m )

Double glazed door to garden, double glazed window to rear, door to wc, wall and base units and space for washing machine

### **Downstairs Wc**

Double glazed window to side, low level wc and ceiling lightpoint.

### **Landing**

Loft hatch and storage cupboard.

### **Bedroom One**

10' x 15' ( 3.05m x 4.57m )

Double glazed window to front, storage cupboard,

radiator and ceiling lightpoint.

### **Bedroom Two**

10' max x 15' ( 3.05m max x 4.57m )

Double glazed window to rear, radiator and ceiling lightpoint.

### **Bedroom Three**

8' max x 7' ( 2.44m max x 2.13m )

Double glazed window front, storage cupboard, radiator and ceiling lightpoint.

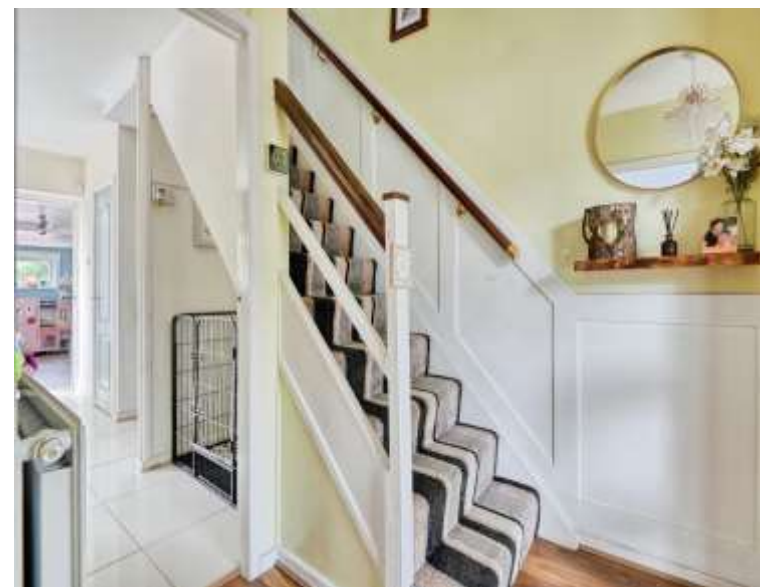
### **Bathroom**

Double glazed window to rear, bath, separate shower cubicle, low level wc, vanity sink and ceiling lightpoint.





This floor plan is for illustrative purposes only. It is not drawn to scale. Any measurements, floor areas (including any total floor area), openings and orientation are approximate. No details are guaranteed, they cannot be relied upon for any purpose and they do not form part of any agreement. No liability is taken for any error, omission or misstatement. A party must rely upon its own inspection(s). Powered by [www.focalagent.com](http://www.focalagent.com)



**welcome to**  
**Longmeadow Crescent,**  
**Birmingham**

- MID TERRACE
- THREE BEDROOMS
- LOUNGE
- KITCHEN DINER
- UTILITY ROOM/ PLAY ROOM

Tenure: Freehold EPC Rating: C  
Council Tax Band: B

offers over  
**£250,000**



**view this property online** [shipways.co.uk/Property/CAB111535](https://shipways.co.uk/Property/CAB111535)



Property Ref:  
CAB111535 - 0004

1. MONEY LAUNDERING REGULATIONS Intending purchasers will be asked to produce identification documentation at a later stage and we would ask for your co-operation in order that there is no delay in agreeing the sale. 2. These particulars do not constitute part or all of an offer or contract. 3. The measurements indicated are supplied for guidance only and as such must be considered incorrect. Potential buyers are advised to recheck measurements before committing to any expense. 4. We have not tested any apparatus, equipment, fixtures or services and it is in the buyers interest to check the working condition of any appliances. 5. Where an EPC, or a Home Report (Scotland only) is held for this property, it is available for inspection at the branch by appointment. If you require a printed version of a Home Report, you will need to pay a reasonable production charge reflecting printing and other costs. 6. We are not able to offer an opinion either written or verbal on the content of these reports and this must be obtained from your legal representative. 7. Whilst we take care in preparing these reports, a buyer should ensure that his/her legal representative confirms as soon as possible all matters relating to title including the extent and boundaries of the property and other important matters before exchange of contracts.

Shipways is a trading name of Sequence (UK) Limited which is registered in England and Wales under company number 4268443, Registered Office is Cumbria House, 16-20 Hockliffe Street, Leighton Buzzard, Bedfordshire, LU7 1GN. VAT Registration Number is 500 2481 05.



**0121 747 4722**



[castlebromwich@shipways.co.uk](mailto:castlebromwich@shipways.co.uk)



258 Chester Road, Castle Bromwich,  
BIRMINGHAM, West Midlands, B36 0JE



**[shipways.co.uk](https://shipways.co.uk)**