



KINGSVIEW MEADOW

← TAMWORTH →



KINGSVIEW MEADOW
← TAMWORTH →



maplevale™
Homes

www.maplevalehomes.co.uk



SITUATED BETWEEN THE
HISTORIC VILLAGE AND
THE COUNTRYSIDE



KINGSVIEW MEADOW
← TAMWORTH →



maplevaleTM
Homes

www.maplevalehomes.co.uk





KINGSVIEW MEADOW
← TAMWORTH →



maplevale™
Homes

www.maplevalehomes.co.uk

INTRODUCING KINGSVIEW MEADOW

FIND YOUR PERFECT NEW HOME

Nestled on the boundary of Riverside and Hopwas in the market town of Tamworth, Staffordshire, Kingsview Meadow is perfectly positioned and offers a stunning collection of high quality executive family homes.

This location is ideally located to ensure you have every level of convenience on your doorstep with the beauty of Woodland, River and Canalside walks just minutes away.

Tamworth is an historic market town where you'll find all of your daily essentials as well as a fine selection of historical and contemporary attractions including Tamworth Castle and Drayton Manor Park. For those looking for a family or romantic night out there is an eclectic range of pubs and restaurants for every occasion all within easy reach.

In the Town Centre you'll find a range of independent retailers within Ankerside Shopping Centre and an array of local shops on Market Street. You also have the added advantage of having Ventura Retail Park on your doorstep that offers some of the larger retailers including M&S, Sainsbury's, Next, Currys, Argos, River Island to name a few. For the fitness fanatics out there, Tamworth offers a wide range of leisure facilities, Gyms and Healthclubs including the Bannatynes Health Club. For the more adventurous Tamworth also benefits from The Snowdome, which has a ski slope, swimming pool and ice-skating rink all for your enjoyment.

TAMWORTH IS VERY WELL CONNECTED

Tamworth enjoys excellent road connections with the A5 to the south of the Town, linking to the M42, M6 & M6 Toll. Birmingham is approximately 40mins drive away from home, Lichfield -10mins, whilst Derby & Nottingham can be reached in approximately 45mins to an hour.

Tamworth Train station is just an 8min drive from home, offering a one-hour service to Nottingham, A 20min service to Birmingham and an hour and a half journey to London Euston. Birmingham Airport is approximately 32mins away.

GOOD SCHOOLS FOR ALL AGES

For families with children you'll be pleased to know there are a number of well-respected primary, junior and secondary schools all within easy access.

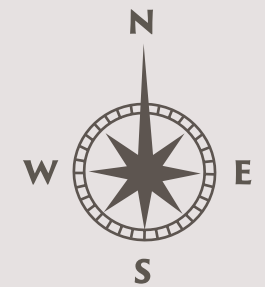
All of this together with the beautiful staffordhsire countryside means Kingsview Meadow could be the perfect place for you.

LOCATION

- ASHBY
- REPTON
- STRETTON
- SYRESCOTE
- CHILCOTE
- NEEDWOOD
- ESSINGTON



KINGSVIEW MEADOW ← TAMWORTH →



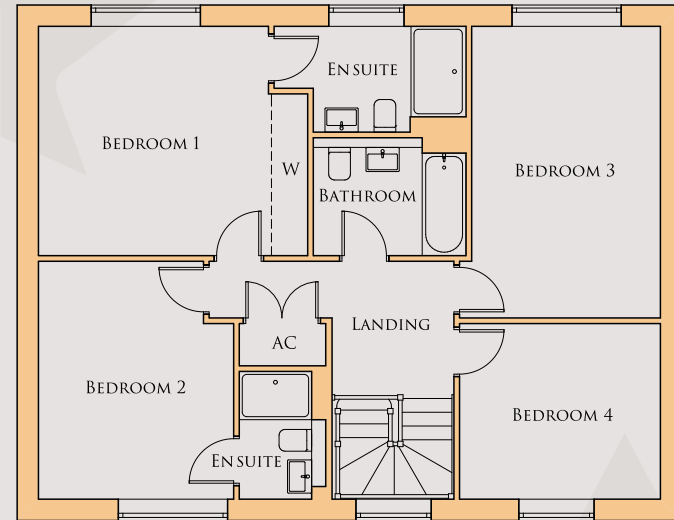
ASHBY

1782 SQFT

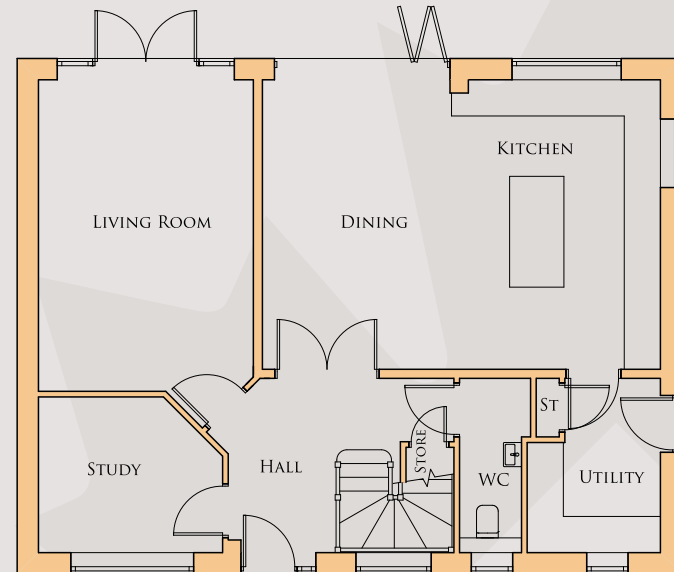



KINGSVIEW MEADOW
← TAMWORTH →

FIRST FLOOR



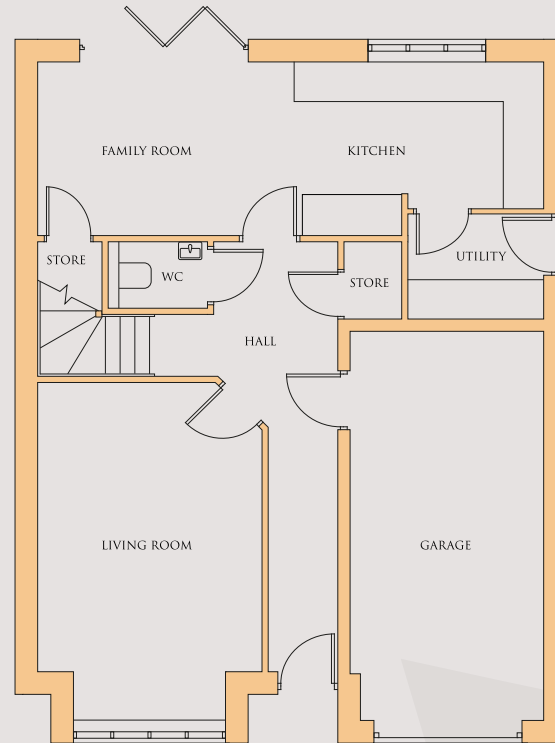
GROUND FLOOR



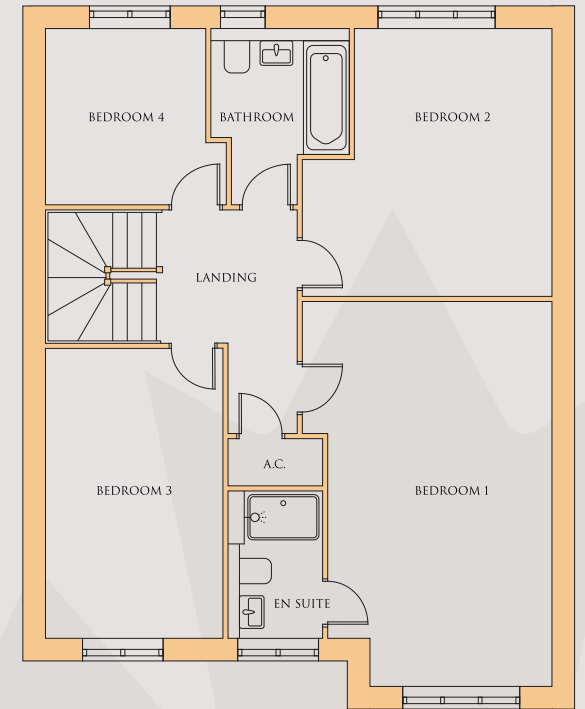
The plan shown is for a left handed house, this will reverse dependant to plot location.
For garages please refer to the site layout.

REPTON

1453 SQFT



GROUND FLOOR



FIRST FLOOR



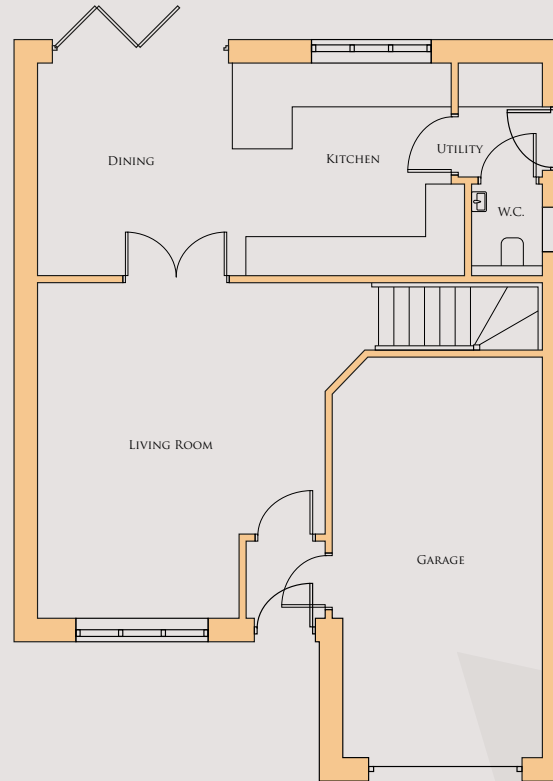
KINGSVIEW MEADOW
← TAMWORTH →

The plan shown is for a right handed house, this will reverse dependant to plot location.

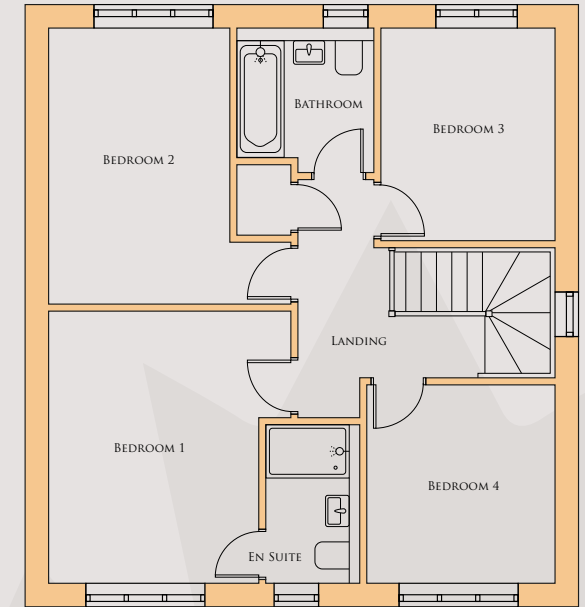
STRETTON

1230 SQFT

(AREA DOES NOT INCLUDE GARAGE)



GROUND FLOOR PLAN



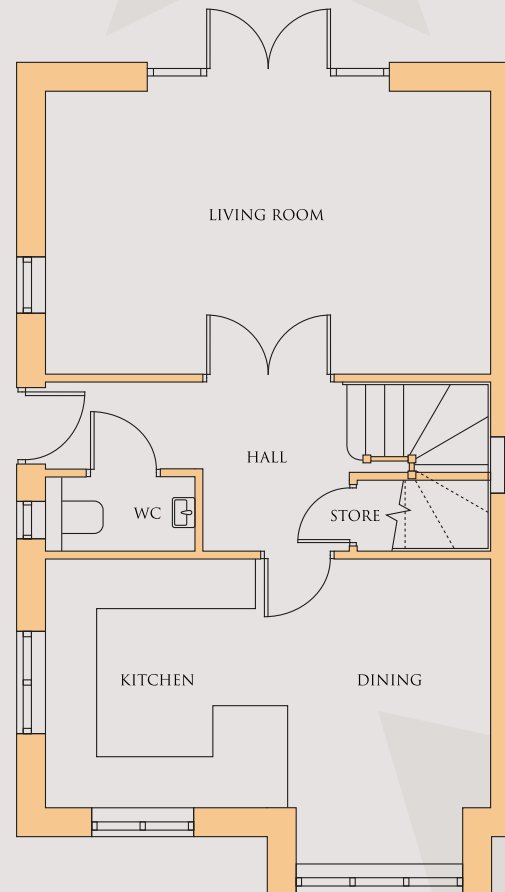
FIRST FLOOR PLAN


KINGSVIEW MEADOW
← TAMWORTH →

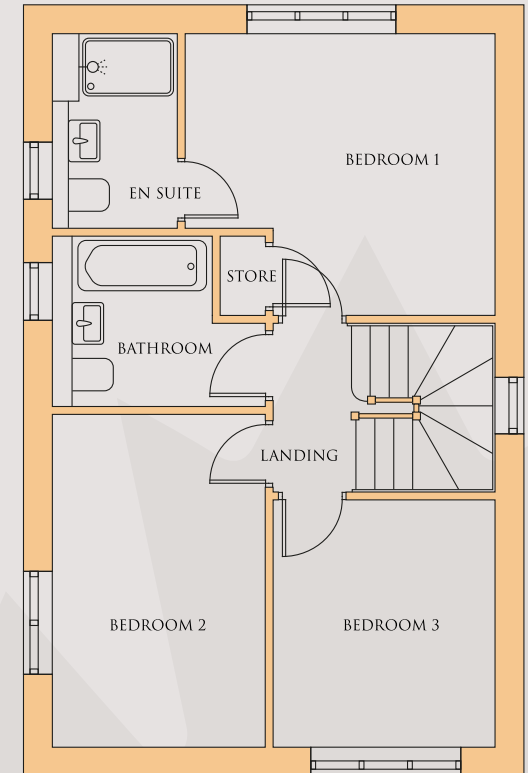
The plan shown is for a right handed house, this will reverse dependant to plot location.
For garages please refer to the site layout.

SYRESCOTE

1029 SQFT



GROUND FLOOR



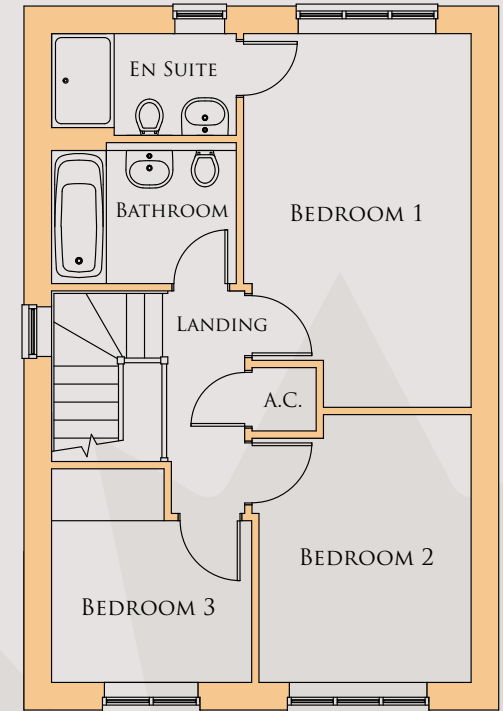
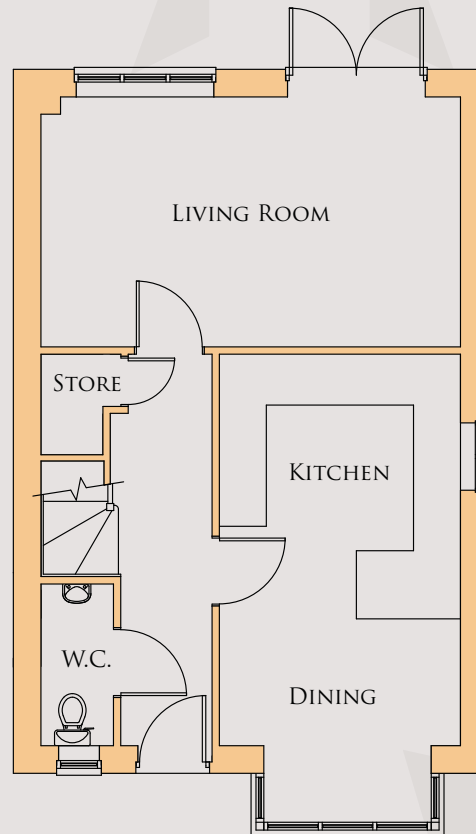
FIRST FLOOR


KINGSVIEW MEADOW
← TAMWORTH →

The plan shown is for a right handed house, this will reverse dependant to plot location.
For garages please refer to the site layout.

CHILCOTE

984 SQFT

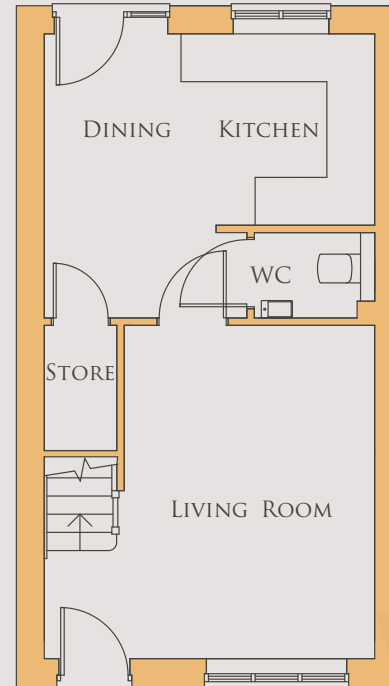



KINGSVIEW MEADOW
← TAMWORTH →

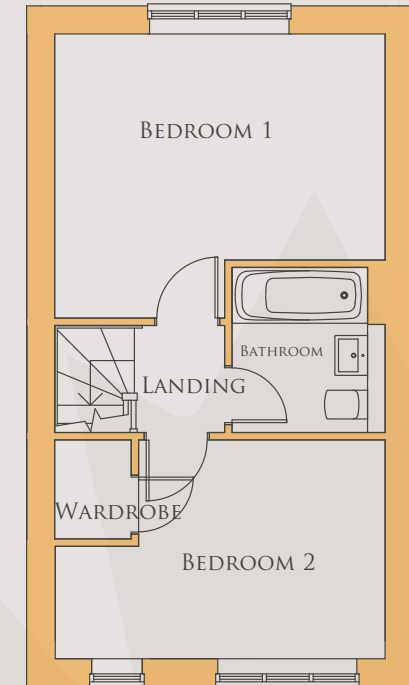
The plan shown is for a right handed house, this will reverse dependant to plot location.
For garages please refer to the site layout.

NEEDWOOD

712 SQFT



GROUND FLOOR PLAN



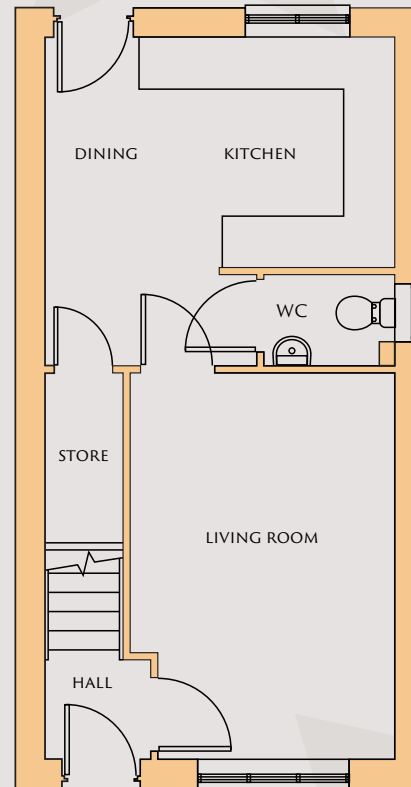
FIRST FLOOR PLAN


KINGSVIEW MEADOW
← TAMWORTH →

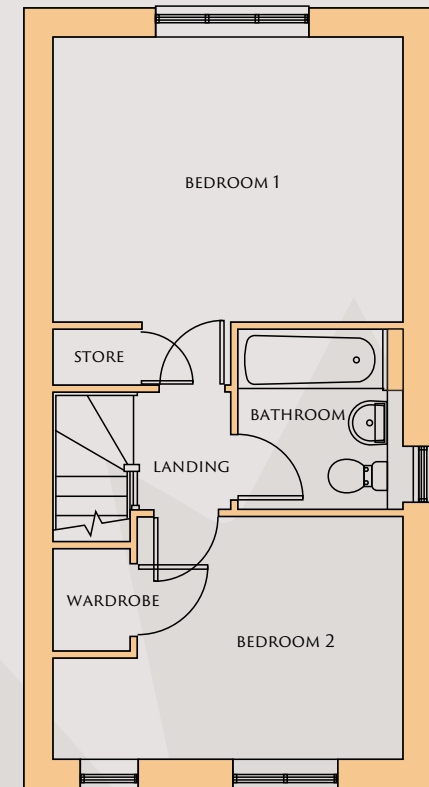
The plan shown is a left handed house, this will reverse dependent on to the plot location.
For garages please refer to the site layout.

ESSINGTON

771 SQFT



GROUND FLOOR PLAN



FIRST FLOOR PLAN


KINGSVIEW MEADOW
← TAMWORTH →

The plan shown is for a left handed house, this will reverse dependant to plot location.
For garages please refer to the site layout.

SEQUENCE RECOMMENDED NEW HOMES MORTGAGE SERVICES

Guiding you through the house buying process will be a 'New Homes Specialist' Mortgage Advisor who is dedicated to new build mortgages. All New Build Mortgage Specialists have years of experience within the mortgage industry. They will ensure that your applications for a mortgage are completed accurately and that agreements are received promptly. They will ensure you receive the best advice and the best mortgage and protection solutions available and that you move smoothly into your new home!

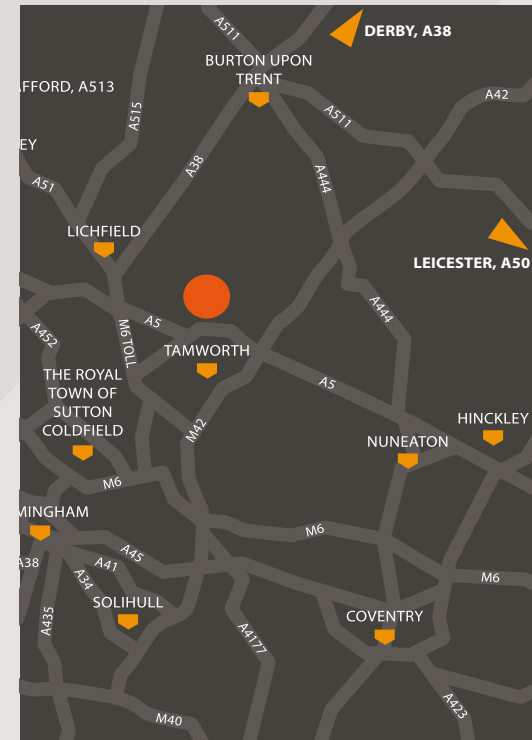
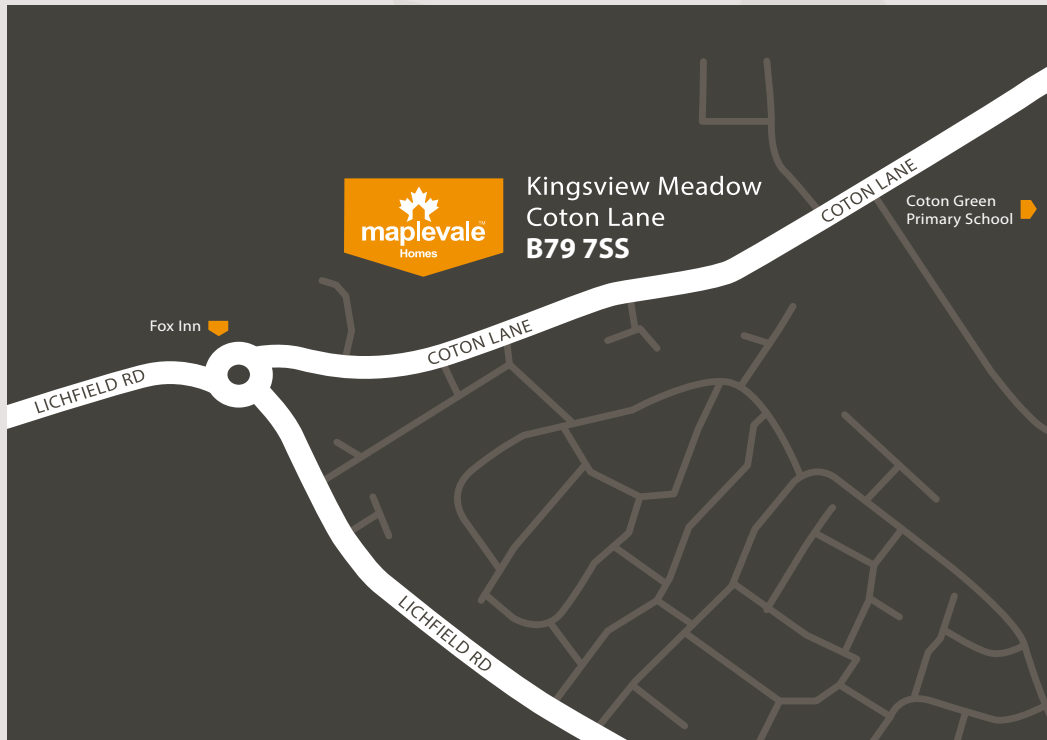
Our New Build Specialists can offer both phone and face to face appointments to suit you.



NEW BUILD CONVEYANCING:

- Your Developer Pays the Conveyancers Legal Fee (full breakdown provided)
- No Move No Legal Fee
- Fixed Transparent Pricing
- Available 7 Days a Week
- Manage Every Aspect of the Case Securely Online
- No Need To Visit The Lawyers Office
- Working Together For A Trouble Free Purchase
- The Standard Conveyancing Searches will be Provided within the Contract Pack to Speed up The Process

T&Cs Apply



FOR FURTHER INFORMATION PLEASE CONTACT
0121 747 4722
SHIPWAYS, CASTLE BROMWICH

DISCLAIMER & TERMS

The information in the brochure is for guidance only. Illustrations, photography and floor plans are indicative only and internal, external finishes and specifications to individual properties may vary. Although extreme care has been taken to ensure that this information is correct, the contents of this brochure do not constitute a contract, part of a contract or warranty. Information is correct at the time of going to press.