



Windsor Road, Castle Bromwich Birmingham B36 0JR

Not for marketing purposes INTERNAL USE ONLY

welcome to

Windsor Road, Castle Bromwich Birmingham

TRADITIONAL SEMI-DETACHED HOUSEFOUR BEDROOM***OPEN PLAN LIVING KITCHEN*** UTILITY***DOWNSTAIRS WET ROOM***WELL PRESENTED*** GARAGE***MUST BE VIEWED***

Agent Note

Council Tax Band D.

Approach

Driveway.

Entrance Porch

Door to hall.

Entrance Hall

Stairs, radiator and ceiling lightpoint.

Lounge

12' x 13' 1" (3.66m x 3.99m)

Double glazed window to front, radiator and ceiling lightpoint.

Kitchen

19' x 9' 1" (5.79m x 2.77m)

Double glazed window to rear, wall and base units, sink and drainer, built in microwave, space for appliances, french doors to conservatory, spotlights and ceiling lightpoint.

Conservatory

9' 1" x 11' (2.77m x 3.35m)

Double glazed french doors to garden and ceiling lightpoint.

Utility

15' maz x 5' (4.57m maz x 1.52m)

Door to garden, space for appliances, door to wet room and garage, radiator and spotlights.

Downstairs Wet Room

Double glazed window to rear, electric shower, low level wc, wall mounted sink, towel rail radiator and spotlights,

Landing

Loft hatch, storage cupboard and ceiling lightpoint.

Bedroom One

10' x 14' (3.05m x 4.27m)

Double glazed window to front, radiator and ceiling lightpoint.

Bedroom Two

10' x 10' (3.05m x 3.05m)

Double glazed window to rear, storage cupboard, radiator and ceiling lightpoint.

Bedroom Three

11' x 7' (3.35m x 2.13m)

Double glazed window to front and rear, radiator and ceiling lightpoint.

Bedroom Four

8' 1" x 10' (2.46m x 3.05m)

Double glazed window to front, storage cupboard, radiator and ceiling lightpoint.

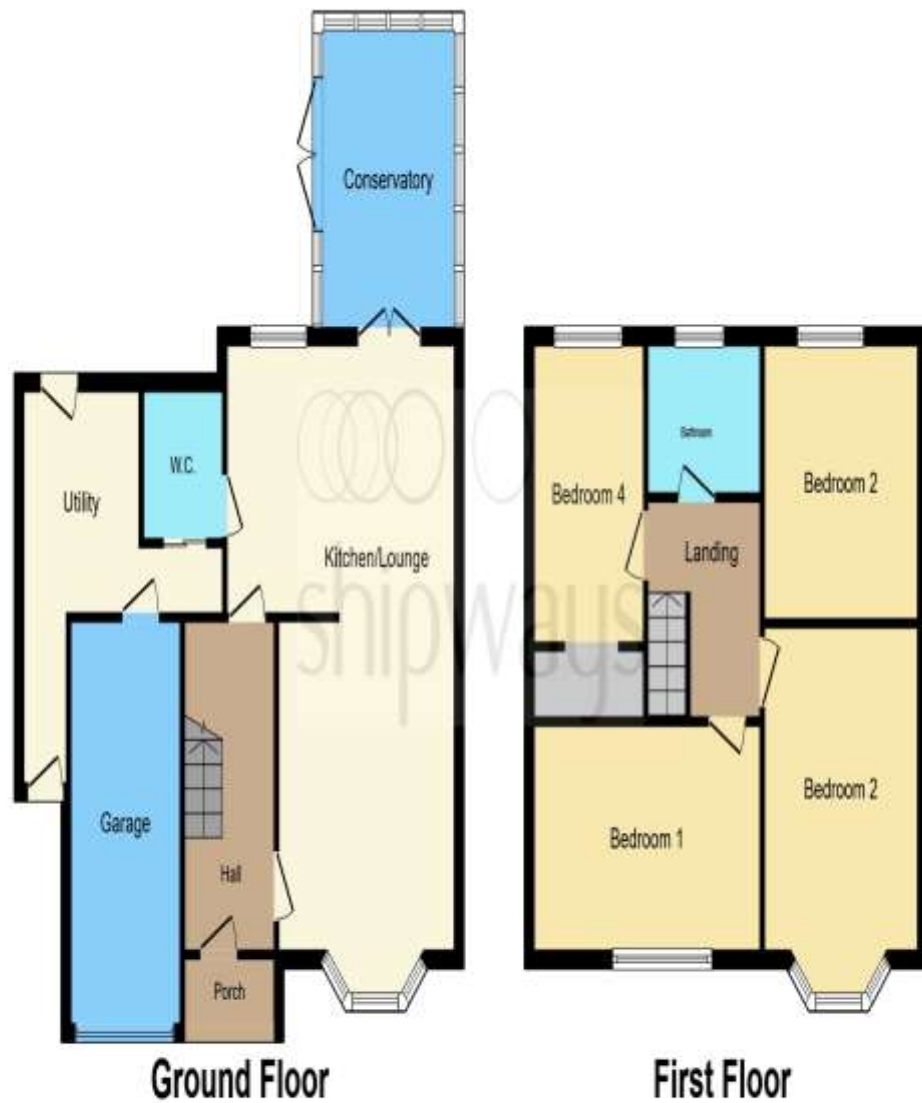
Bathroom

Double glazed window to rear, P shaped bath, walk in shower, vanity sink, low level wc, towel rail radiator and spotlights.

Garage

7' x 16' (2.13m x 4.88m)

Double glazed window to side and ceiling lightpoint.



This floor plan is for illustrative purposes only. It is not drawn to scale. Any measurements, floor areas (including any total floor area), openings and orientation are approximate. No details are guaranteed, they cannot be relied upon for any purpose and they do not form part of any agreement. No liability is taken for any error, omission or misstatement. A party must rely upon its own inspection(s). Powered by www.focalagent.com



welcome to
Windsor Road,
Castle Bromwich Birmingham

- SEMI-DETACHED
- FOUR BEDROOMS
- DOWNSTAIRS WET ROOM
- UTILITY
- FAMILY BATHROOM

Tenure: Freehold EPC Rating: Awaited

£400,000



check out more properties at shipways.co.uk



Property Ref:
CAB111371 - 0002

1. MONEY LAUNDERING REGULATIONS Intending purchasers will be asked to produce identification documentation at a later stage and we would ask for your co-operation in order that there is no delay in agreeing the sale. 2. These particulars do not constitute part or all of an offer or contract. 3. The measurements indicated are supplied for guidance only and as such must be considered incorrect. Potential buyers are advised to recheck measurements before committing to any expense. 4. We have not tested any apparatus, equipment, fixtures or services and it is in the buyers interest to check the working condition of any appliances. 5. Where an EPC, or a Home Report (Scotland only) is held for this property, it is available for inspection at the branch by appointment. If you require a printed version of a Home Report, you will need to pay a reasonable production charge reflecting printing and other costs. 6. We are not able to offer an opinion either written or verbal on the content of these reports and this must be obtained from your legal representative. 7. Whilst we take care in preparing these reports, a buyer should ensure that his/her legal representative confirms as soon as possible all matters relating to title including the extent and boundaries of the property and other important matters before exchange of contracts.

Shipways is a trading name of Sequence (UK) Limited which is registered in England and Wales under company number 4268443, Registered Office is Cumbria House, 16-20 Hockliffe Street, Leighton Buzzard, Bedfordshire, LU7 1GN. VAT Registration Number is 500 2481 05.

Not for marketing purposes INTERNAL USE ONLY



0121 747 4722



castlebromwich@shipways.co.uk



258 Chester Road, Castle Bromwich,
BIRMINGHAM, West Midlands, B36 0JE



shipways.co.uk