



**Keyford, Frome BA11 1LA**

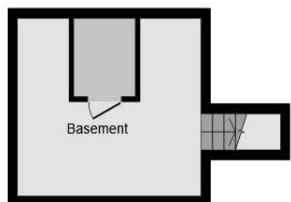


**welcome to**

## **Keyford, Frome**

This delightful mid-terraced cottage blends character features with comfortable living, making it an ideal choice for families or those seeking a home with personality. With an impressive layout through three floors, this property is highly recommended to view in order to fully appreciate.

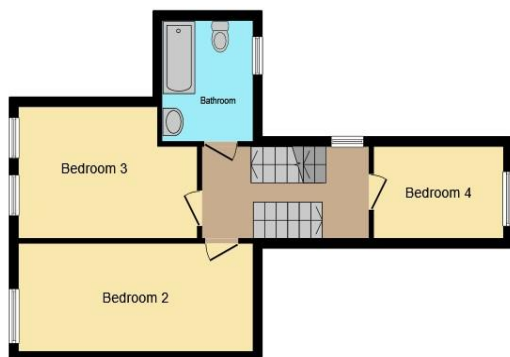




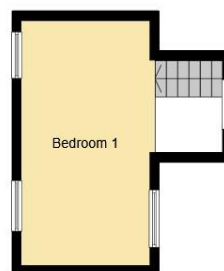
**Basement**



**Ground Floor**



**First Floor**



**Second Floor**



### **Reception**

24' 1" x 12' 9" ( 7.34m x 3.89m )

### **Dining Room**

11' 1" x 9' 5" ( 3.38m x 2.87m )

### **Kitchen**

10' 4" x 9' 7" ( 3.15m x 2.92m )

### **First Floor Landing**

### **Bedroom Four**

9' 9" x 6' 11" ( 2.97m x 2.11m )

### **Bedroom Three**

10' 7" x 10' 7" ( 3.23m x 3.23m )

### **Bedroom Two**

13' 2" x 7' 8" ( 4.01m x 2.34m )

### **Bathroom**

### **Bedroom One**

18' 4" x 9' 10" ( 5.59m x 3.00m )

### **Basement**

14' 1" x 12' 9" ( 4.29m x 3.89m )

### **Garden**

This floor plan is for illustrative purposes only. It is not drawn to scale. Any measurements, floor areas (including any total floor area), openings and orientation are approximate. No details are guaranteed, they cannot be relied upon for any purpose and they do not form part of any agreement. No liability is taken for any error, omission or misstatement. A party must rely upon its own inspection(s). Powered by [www.focalagent.com](http://www.focalagent.com)

## welcome to Keyford, Frome

- Mid-Terraced Cottage\*\*Four Bedroom House
- Character Features\*\*Featured Fireplace\*\*Log Burning Stove
- Spacious Reception Room\*\*Dining Room\*\*Ample Kitchen
- Two Double Bedrooms\*\*Two Single Bedrooms
- Basement\*\*Lots Of Storage Space

Tenure: Freehold EPC Rating: D

offers in excess of

**£425,000**



Please note the marker reflects the  
postcode not the actual property

**view this property online** [allenandharris.co.uk/Property/FRO111025](https://allenandharris.co.uk/Property/FRO111025)



Property Ref:  
FRO111025 - 0003

1. MONEY LAUNDERING REGULATIONS Intending purchasers will be asked to produce identification documentation at a later stage and we would ask for your co-operation in order that there is no delay in agreeing the sale. 2. These particulars do not constitute part or all of an offer or contract. 3. The measurements indicated are supplied for guidance only and as such must be considered incorrect. Potential buyers are advised to recheck measurements before committing to any expense. 4. We have not tested any apparatus, equipment, fixtures or services and it is in the buyers interest to check the working condition of any appliances. 5. Where an EPC, or a Home Report (Scotland only) is held for this property, it is available for inspection at the branch by appointment. If you require a printed version of a Home Report, you will need to pay a reasonable production charge reflecting printing and other costs. 6. We are not able to offer an opinion either written or verbal on the content of these reports and this must be obtained from your legal representative. 7. Whilst we take care in preparing these reports, a buyer should ensure that his/her legal representative confirms as soon as possible all matters relating to title including the extent and boundaries of the property and other important matters before exchange of contracts.

Allen & Harris is a trading name of Sequence (UK) Limited which is registered in England and Wales under company number 4268443, Registered Office is Cumbria House, 16-20 Hockliffe Street, Leighton Buzzard, Bedfordshire, LU7 1GN. VAT Registration Number is 500 2481 05.

  
allen & harris



**01373 462999**



[Frome@allenandharris.co.uk](mailto:Frome@allenandharris.co.uk)



9 The Bridge, FROME, Somerset, BA11 1AR



**[allenandharris.co.uk](https://allenandharris.co.uk)**