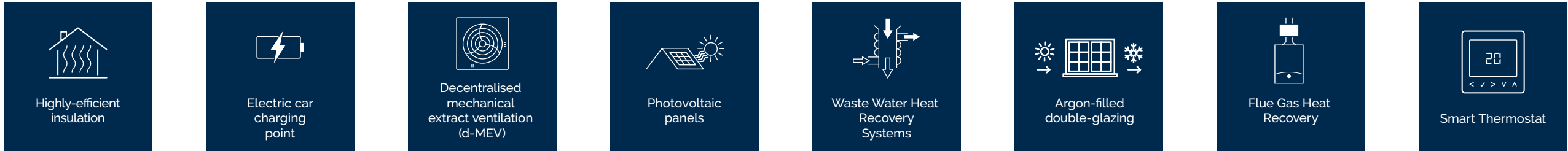
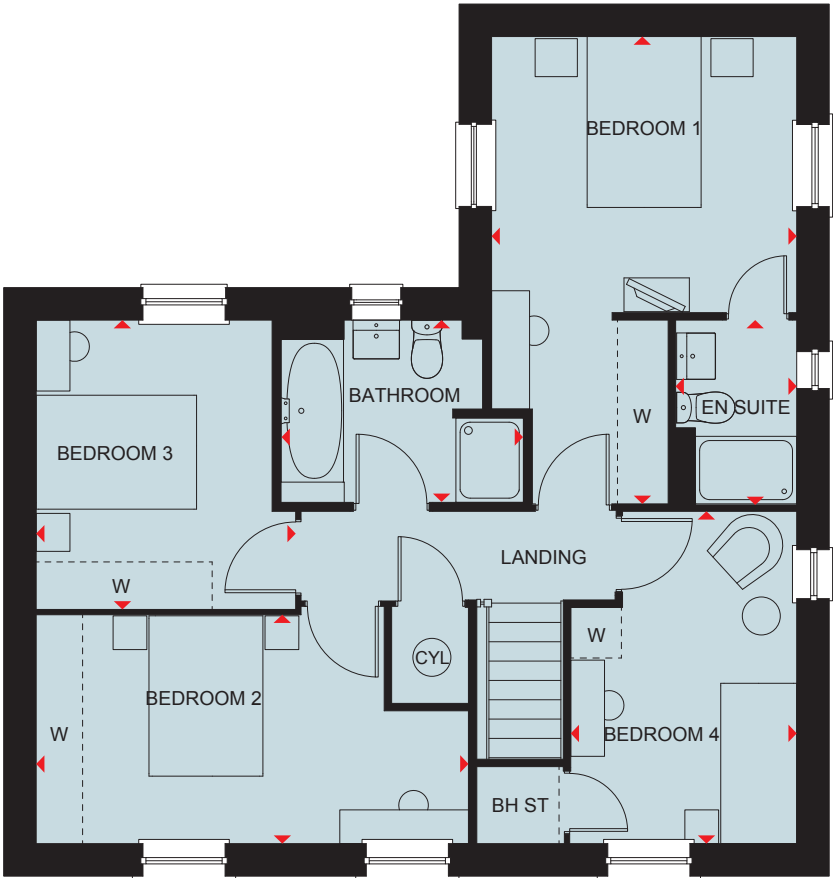
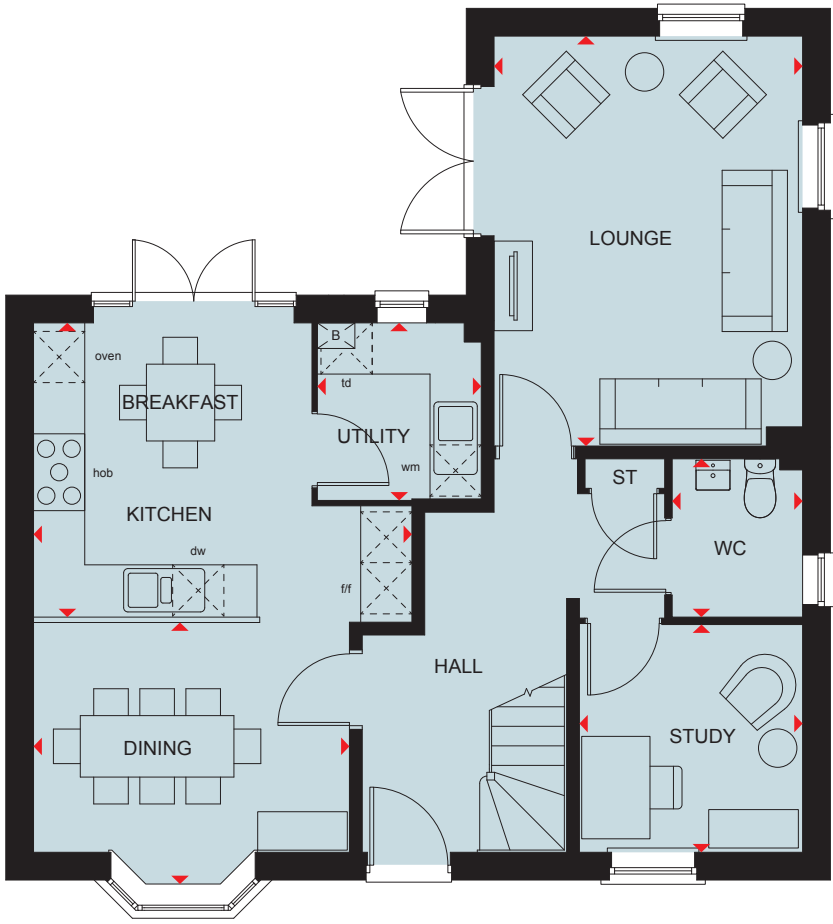


# PEREGRINE

## FOUR BEDROOM HOME



Features are plot specific. Please refer to working drawing.



Ground Floor		
Lounge	4803 x 3610 mm	15'11" x 11'9"
Kitchen/Breakfast/Dining	6600 x 4438 mm	21'7" x 14'7"
Utility	2164 x 1907 mm	7'1" x 6'3"
Study	2615 x 2668 mm	8'7" x 8'9"
WC	1860 x 1512 mm	6'1" x 5'0"

First Floor		
Bedroom 1	5543 x 3610 mm	18'2" x 11'9"
En suite	2165 x 1435 mm	7'1" x 4'8"
Bedroom 2	3416 x 2800 mm	11'3" x 9'2"
Bedroom 3	3566 x 3316 mm	11'8" x 10'10"
Bedroom 4	3938 x 2677 mm	12'11" x 8'9"
Bathroom	2871 x 2160 mm	9'5" x 7'1"
Landing	3693 x 1050 mm	12'1" x 3'5"

Key					
B	Boiler	CYL	Cylinder	f/f	Fridge/freezer space
ST	Store	BH ST	Bulkhead store	wm	Washing machine space
				dw	Dishwasher space
				td	Tumble dryer space
				W	Wardrobe space
				◀▶	Dimension location



DAVID WILSON HOMES