



Fausto, Ellington Road, Taplow, Maidenhead SL6 0AX

welcome to

Fausto, Ellington Road, Taplow, Maidenhead

Built around 1903, this characterful home, one of three near-identical properties on Ellington Road sits within the Taplow Riverside Conservation Area and although not listed with Historic England, it is featured on the Buckinghamshire Local Heritage List. It retains a number of original Edwardian features and offers generous accommodation arranged over three floors, with vacant possession and no onward chain.





Ellington Road, Taplow, Maidenhead, SL6

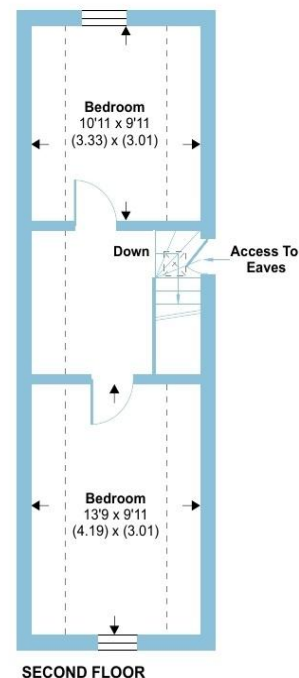
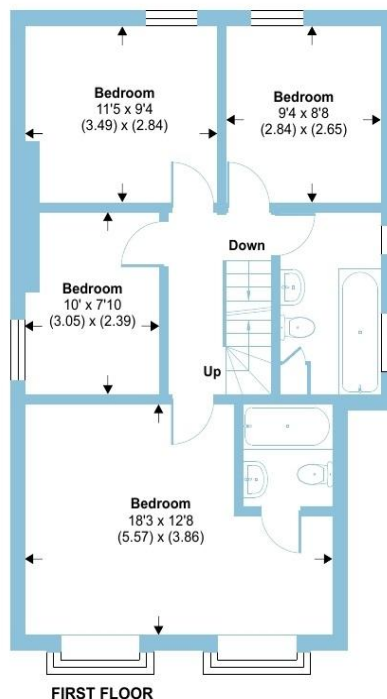
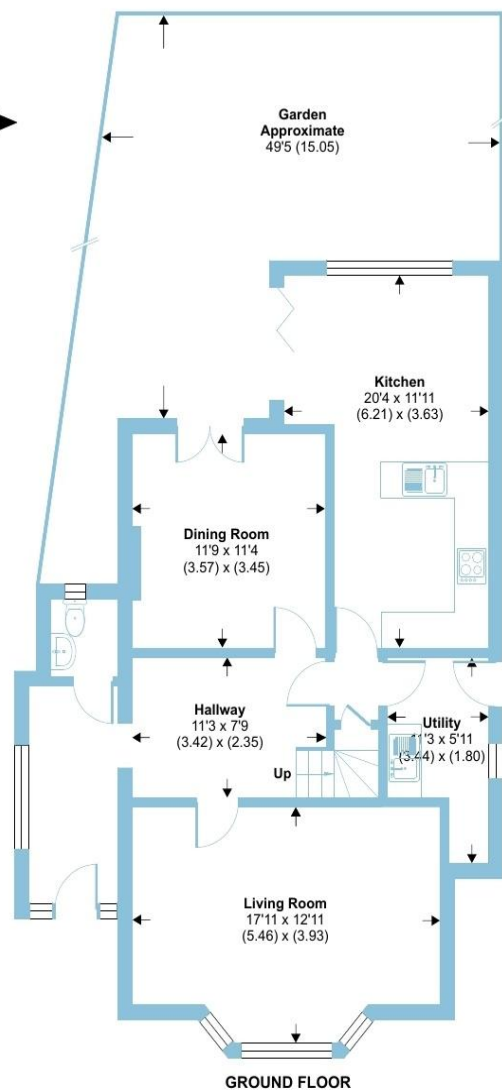
Approximate Area = 1720 sq ft / 159.7 sq m

Limited Use Area(s) = 115 sq ft / 10.6 sq m

Total = 1835 sq ft / 170.4 sq m

For identification only - Not to scale

Denotes restricted
head height



Floor plan produced in accordance with RICS Property Measurement 2nd Edition, Incorporating International Property Measurement Standards (IPMS2 Residential). © nichecom 2025. Produced for Barnard Marcus. REF: 1319412



Ellington Road is one of Taplow's most desirable tree-lined streets, known for its attractive Edwardian homes and strong sense of community. The River Thames is less than a five-minute walk away, with the Thames Path and local rowing club close by.

The property benefits from two front driveways with lowered kerbs providing off-road parking, and an attractive west-facing rear garden. Transport links are excellent: Taplow and Maidenhead stations (Elizabeth Line/Paddington) are within easy reach, and the M4 (Junction 7 and 8/9) gives convenient access to Heathrow, Central London, the West Country, and the M25.

Local schools, restaurants, parkland, and riverside walks are all within comfortable walking distance, making this an appealing and well-connected heritage home.

welcome to

Fausto, Ellington Road, Taplow

- VACANT POSSESSION & NO ONWARD CHAIN
- DESIRABLE TREE-LINED ROAD
- WITHIN A SHORT STROLL OF THE RIVER THAMES
- LOCAL SCHOOLS & AMENITIES CLOSE BY
- CONVENIENTLY LOCATED FOR MAIDENHEAD & TAPLOW STATIONS
- GENEROUS FAMILY ACCOMMODATION OVER THREE FLOORS
- SIX BEDROOMS, TWO BATHROOMS
- TWO DRIVEWAYS TO THE FRONT PROVIDING PARKING FOR AT LEAST 2 VEHICLES

Tenure: Freehold EPC Rating: D
Council Tax Band: F

offers in excess of

£850,000



Please note the marker reflects the
postcode not the actual property

check out more properties at rogerplatt.co.uk



Property Ref:
MHD123377 - 0001

1. MONEY LAUNDERING REGULATIONS Intending purchasers will be asked to produce identification documentation at a later stage and we would ask for your co-operation in order that there is no delay in agreeing the sale. 2. These particulars do not constitute part or all of an offer or contract. 3. The measurements indicated are supplied for guidance only and as such must be considered incorrect. Potential buyers are advised to recheck measurements before committing to any expense. 4. We have not tested any apparatus, equipment, fixtures or services and it is in the buyers interest to check the working condition of any appliances. 5. Where an EPC, or a Home Report (Scotland only) is held for this property, it is available for inspection at the branch by appointment. If you require a printed version of a Home Report, you will need to pay a reasonable production charge reflecting printing and other costs. 6. We are not able to offer an opinion either written or verbal on the content of these reports and this must be obtained from your legal representative. 7. Whilst we take care in preparing these reports, a buyer should ensure that his/her legal representative confirms as soon as possible all matters relating to title including the extent and boundaries of the property and other important matters before exchange of contracts.

Roger Platt is a trading name of Sequence (UK) Limited which is registered in England and Wales under company number 4268443, Registered Office is Cumbria House, 16-20 Hockliffe Street, Leighton Buzzard, Bedfordshire, LU7 1GN. VAT Registration Number is 500 2481 05.


roger platt



01628 773333



Maidenhead@rogerplatt.co.uk



**25-29 Queen Street, MAIDENHEAD, Berkshire,
SL6 1NB**



rogerplatt.co.uk