

Audrey House

One and two bedroom homes

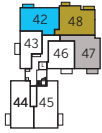
Apartments 21-48



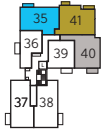
Bellway Homes Limited (Thames Valley Division)
Pacific House, Imperial Way, Reading
Berkshire RG2 0TD

Telephone: 0118 933 8020
Fax: 0118 931 3929
www.bellway.co.uk

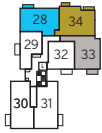
Bellway



Third Floor



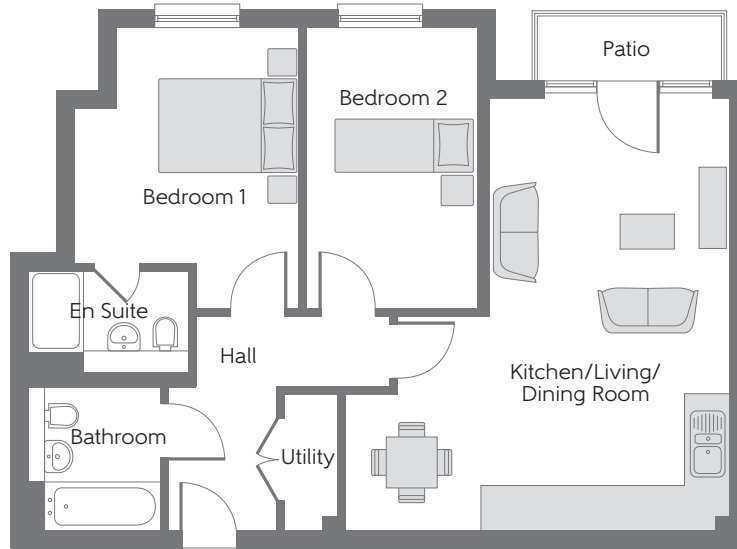
Second Floor



First Floor



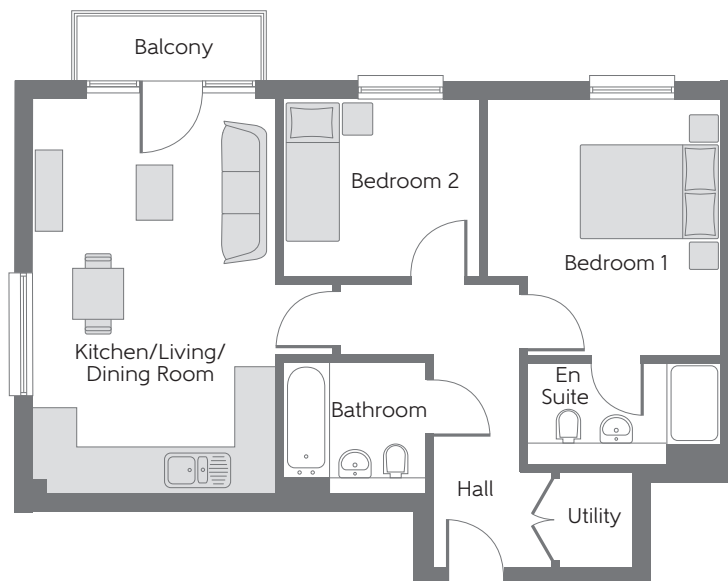
Ground Floor



The Beryl

Apartment 27

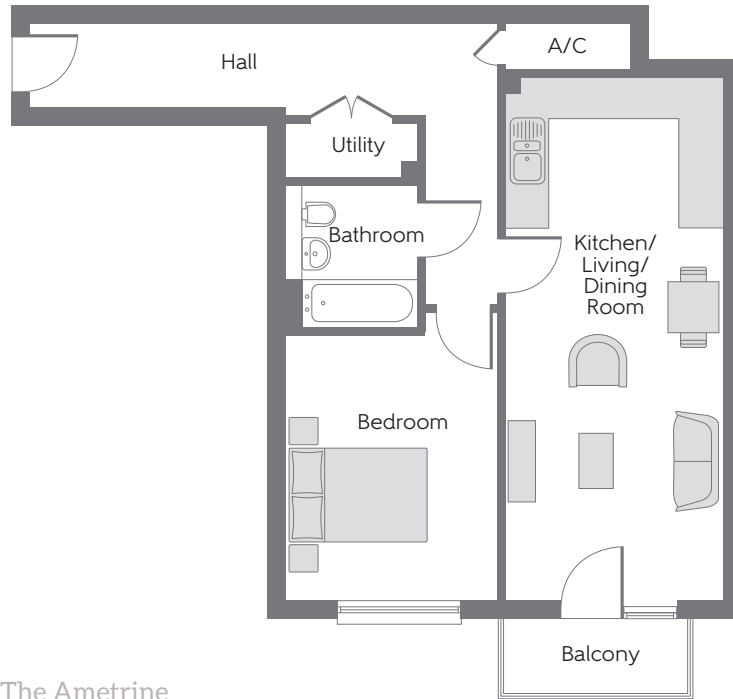
Kitchen/Living/ Dining Room	6.373m x 5.652m	20'11" x 18'7"
Bedroom 1	4.145m x 3.315m	13'7" x 10'11"
Bedroom 2	4.155m x 2.504m	13'8" x 8'3"



The Larimar

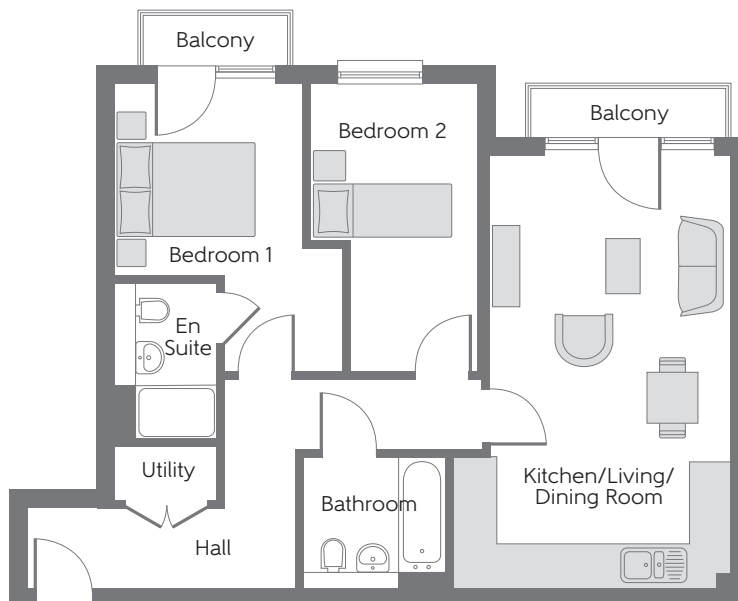
Apartments 28, 35 & 42

Kitchen/Living/ Dining Room	5.757m x 3.560m	18'11" x 11'8"
Bedroom 1	3.766m x 3.465m	12'4" x 11'4"
Bedroom 2	2.895m x 2.608m	9'6" x 8'7"



The Ametrine
Apartments 33, 40 & 47

Kitchen/Living/ Dining Room	7.655m x 3.207m	25'1" x 10'6"
Bedroom	3.898m x 3.101m	12'9" x 10'2"



The Garnet
Apartments 34, 41 & 48

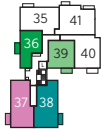
Kitchen/Living/ Dining Room	6.350m x 4.074m	20'10" x 13'4"
Bedroom 1	4.207m x 2.761m	13'10" x 9'1"
Bedroom 2	4.255m x 2.469m	14'0" x 8'1"

A/C Airing Cupboard

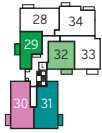
Some items shown in this key may be subject to change, and positions could vary from those indicated on this floorplan. Please refer to Sales Advisor for details of your selected plot. Computer generated image shown overleaf. External finishes and landscaping may vary from plot to plot. Please refer to Sales Advisor for further details. All dimensions are approximate and should not be used for carpet sizes, appliance spaces, or furniture. Furniture not to scale and all positions are indicative. We operate a policy of continuous improvement and individual features such as kitchen and bathroom layouts, doors, windows, garages and elevational treatments may vary from time to time. Consequently these particulars should be treated as general guidance only and do not constitute a contract, part of a contract or a warranty. L Lift. 01862-03/01/22.



Third Floor



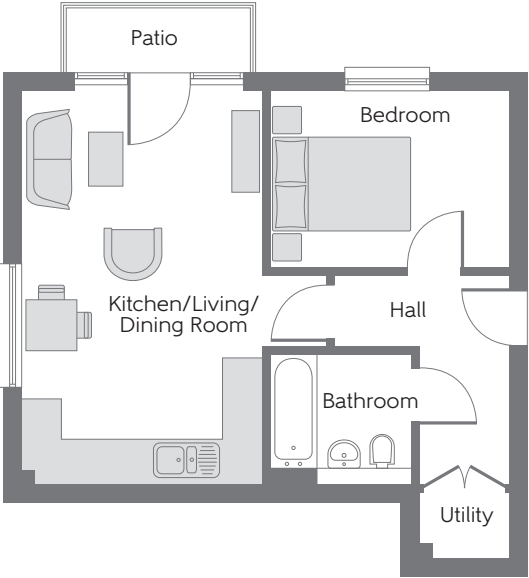
Second Floor



First Floor

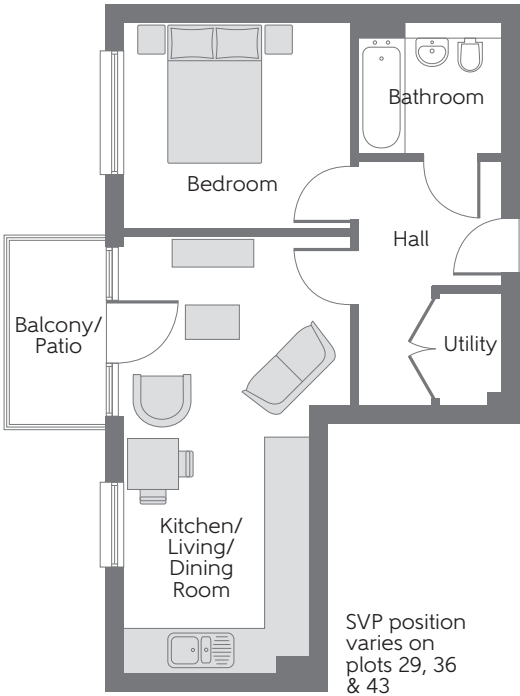


Ground Floor



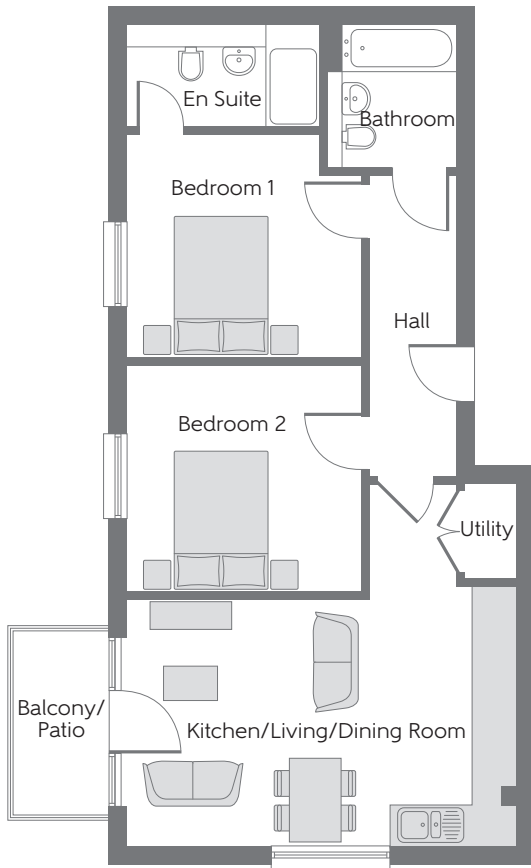
The Tanzanite
Apartment 21

Kitchen/Living/ Dining Room	5.783m x 3.567m	19'0" x 11'8"
Bedroom	3.533m x 2.599m	11'7" x 8'6"



The Carnelian
Apartments 22, 29, 36 & 43

Kitchen/Living/ Dining Room	6.403m x 3.320m	21'0" x 10'11"
Bedroom	3.353m x 3.020m	11'0" x 9'11"

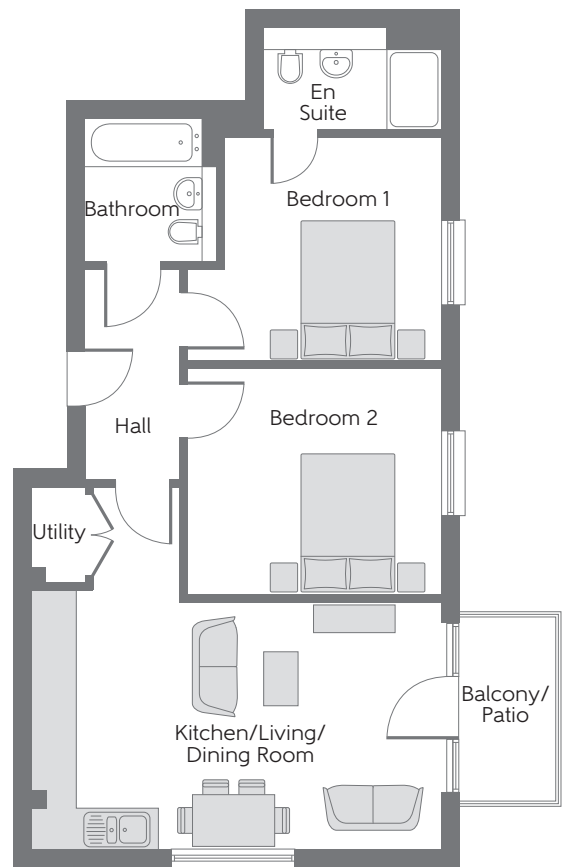


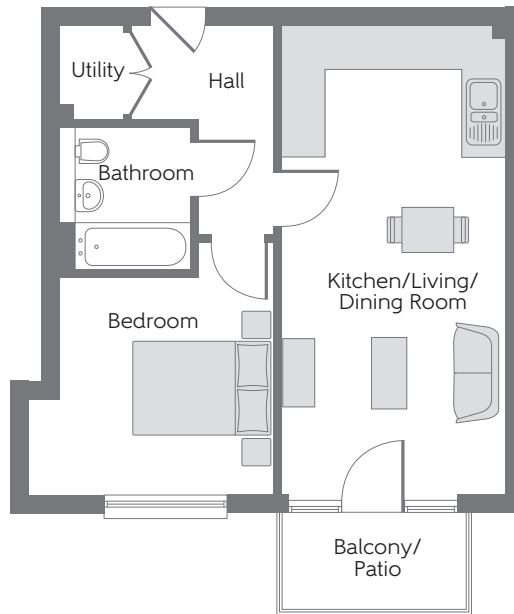
The Onyx
Apartments 23, 30, 37 & 44

Kitchen/Living/ Dining Room	5.707m x 5.278m	18'9" x 17'4"
Bedroom 1	3.445m x 3.319m	11'4" x 10'11"
Bedroom 2	3.420m x 3.333m	11'3" x 10'11"

The Jasper
Apartments 24, 31, 38 & 45

Kitchen/Living/ Dining Room	5.991m x 5.299m	19'8" x 17'5"
Bedroom 1	3.730m x 3.294m	12'3" x 10'10"
Bedroom 2	3.735m x 3.341m	12'3" x 11'0"

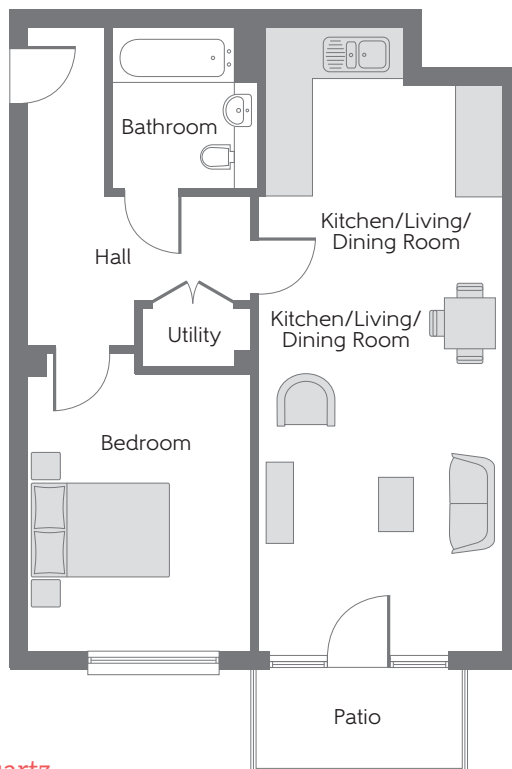




The Spinel

Apartments 25, 32, 39 & 46

Kitchen/Living/ Dining Room	6.875m x 3.255m	22'7" x 10'8"
Bedroom	3.708m x 3.572m	12'2" x 11'9"



The Quartz

Apartment 26

Kitchen/Living/ Dining Room	8.427m x 3.308m	27'8" x 10'10"
Bedroom	4.064m x 3.007m	13'4" x 9'10"

Some items shown in this key may be subject to change, and positions could vary from those indicated on this floorplan. Please refer to Sales Advisor for details of your selected plot. Computer generated image shown overleaf. External finishes and landscaping may vary from plot to plot. Please refer to Sales Advisor for further details. All dimensions are approximate and should not be used for carpet sizes, appliance spaces, or furniture. Furniture not to scale and all positions are indicative. We operate a policy of continuous improvement and individual features such as kitchen and bathroom layouts, doors, windows, garages and elevational treatments may vary from time to time. Consequently these particulars should be treated as general guidance only and do not constitute a contract, part of a contract or a warranty. L Lift