

# Lambourne House

1 and 2 bedroom homes

---

Apartments 55 - 82



Huntercombe Walk  
Huntercombe Park, Taplow  
Buckinghamshire SL6 0PQ

Telephone: 01628 703 738  
[www.bellway.co.uk](http://www.bellway.co.uk)

**Bellway**

# Huntercombe Walk

## Development layout

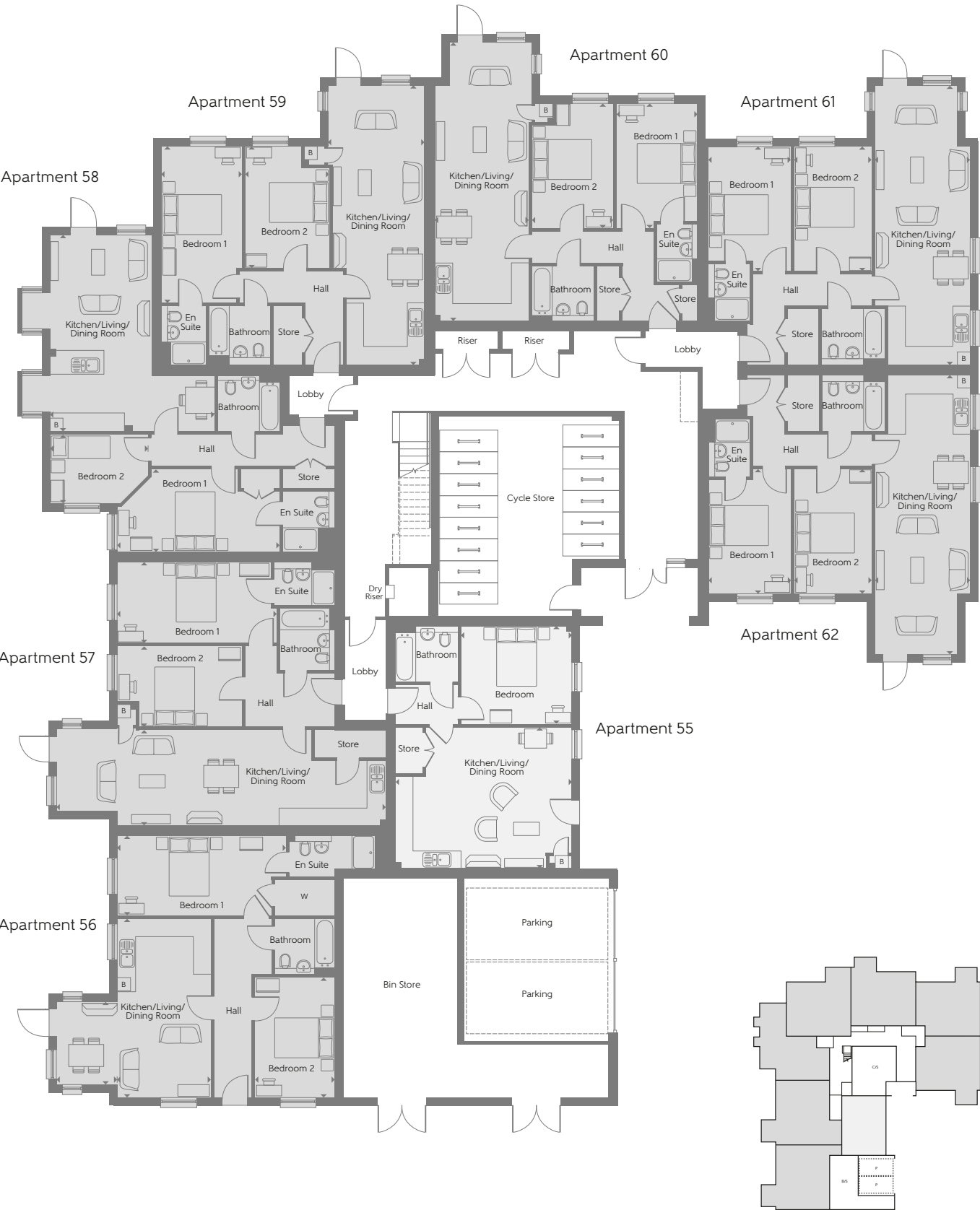
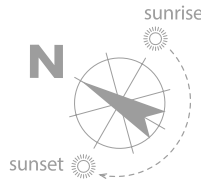


The site plan is drawn to show the relative position of individual properties. NOT TO SCALE. This is a two dimensional drawing and will not show land contours and gradients, boundary treatments, landscaping or local authority street lighting. Footpaths subject to change. For details of individual properties and availability please refer to our Sales Advisor.



# Huntercombe Walk

## Ground Floor



Ground Floor

### The Coln Apartment 55

Kitchen/Living/ Dining Room	6.080m x 4.870m	19'11" x 16'0"
Bedroom	3.830m x 3.390m	12'7" x 11'1"
Total internal area	51 sq.m.	548 sq.ft.

### The Lea Apartment 56

Kitchen/Living/ Dining Room	5.330m x 2.850m	17'6" x 9'4"
Bedroom 1	5.820m x 2.770m	19'1" x 9'1"
Bedroom 2	4.150m x 2.770m	13'7" x 9'1"
Total internal area	76 sq.m.	817 sq.ft.

### The Churn Apartment 57

Kitchen/Living/ Dining Room	11.360m x 3.280m	37'3" x 10'9"
Bedroom 1	5.510m x 2.780m	18'1" x 9'1"
Bedroom 2	4.310m x 2.820m	14'2" x 9'3"
Total internal area	80 sq.m.	860 sq.ft.

### The Evenlode Apartment 58

Kitchen/Living/ Dining Room	6.780m x 5.670m	22'3" x 18'7"
Bedroom 1	5.600m x 2.850m	18'4" x 9'4"
Bedroom 2	3.380m x 2.380m	11'1" x 7'10"
Total internal area	70 sq.m.	750 sq.ft.

### The Lambourn Apartment 59

Kitchen/Living/ Dining Room	8.440m x 3.300m	27'8" x 10'10"
Bedroom 1	4.320m x 2.720m	14'2" x 8'11"
Bedroom 2	4.320m x 2.830m	14'2" x 9'3"
Total internal area	76 sq.m.	813 sq.ft.

### The Cherwell Apartment 60

Kitchen/Living/ Dining Room	10.840m x 3.240m	35'7" x 10'8"
Bedroom 1	4.070m x 2.830m	13'4" x 9'3"
Bedroom 2	4.310m x 2.820m	14'2" x 9'3"
Total internal area	74 sq.m.	801 sq.ft.

### The Ravensbourne Apartment 61

Kitchen/Living/ Dining Room	9.640m x 3.300m	31'8" x 10'10"
Bedroom 1	3.950m x 2.860m	13'0" x 9'5"
Bedroom 2	4.310m x 2.690m	14'2" x 8'10"
Total internal area	72 sq.m.	777 sq.ft.

### The Ravensbourne Apartment 62

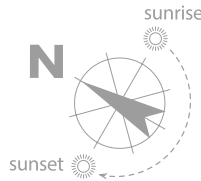
Kitchen/Living/ Dining Room	9.640m x 3.300m	31'8" x 10'10"
Bedroom 1	3.950m x 2.860m	13'0" x 9'5"
Bedroom 2	4.310m x 2.690m	14'2" x 8'10"
Total internal area	72 sq.m.	777 sq.ft.

1 Bedroom 2 Bedroom W Fitted Wardrobe B Boiler B/S Bin Store C/S Cycle Store P Parking Indicates where dimensions are taken from

Some items shown in this key may be subject to change, and positions could vary from those indicated on this floorplate. Please refer to Sales Advisor for details of your selected plot. External finishes and landscaping may vary from plot to plot. Please refer to Sales Advisor for further details. All dimensions are approximate and should not be used for carpet sizes, appliance spaces, or furniture. Furniture not to scale and all positions are indicative. We operate a policy of continuous improvement and individual features such as kitchen and bathroom layouts, doors, windows, garages and elevational treatments may vary from time to time. Consequently these particulars should be treated as general guidance only and do not constitute a contract, part of a contract or a warranty.

# Huntercombe Walk

## First Floor



First Floor

The Coln Apartment 63			The Lambourn Apartment 68		
Kitchen/Living/ Dining Room	6.080m x 4.870m	19'11" x 16'0"	Kitchen/Living/ Dining Room	8.440m x 3.300m	27'8" x 10'10"
Bedroom	3.830m x 3.390m	12'7" x 11'1"	Bedroom 1	4.320m x 2.720m	14'2" x 8'11"
Total internal area	51 sq.m.	548 sq.ft.	Bedroom 2	4.320m x 2.830m	14'2" x 9'3"
			Total internal area	76 sq.m.	813 sq.ft.
The Sudbrook Apartment 64			The Longford Apartment 69		
Kitchen/Living/ Dining Room	7.540m x 3.380m	24'9" x 11'1"	Kitchen/Living/ Dining Room	8.400m x 3.240m	27'7" x 10'8"
Bedroom 1	4.250m x 2.800m	13'11" x 9'2"	Bedroom 1	4.070m x 2.820m	13'4" x 9'3"
Bedroom 2	4.250m x 2.700m	13'11" x 8'10"	Bedroom 2	4.310m x 2.820m	14'2" x 9'3"
Total internal area	69 sq.m.	738 sq.ft.	Total internal area	70 sq.m.	758 sq.ft.
The Walbrook Apartment 65			The Darent Apartment 70		
Kitchen/Living/ Dining Room	8.400m x 3.300m	27'7" x 10'10"	Kitchen/Living/ Dining Room	8.440m x 3.300m	27'8" x 10'10"
Bedroom 1	4.280m x 2.830m	14'1" x 9'3"	Bedroom 1	4.320m x 2.830m	14'2" x 9'3"
Bedroom 2	4.280m x 2.720m	14'1" x 8'11"	Bedroom 2	4.320m x 2.720m	14'2" x 8'11"
Total internal area	71 sq.m.	762 sq.ft.	Total internal area	71 sq.m.	762 sq.ft.
The Roding Apartment 66			The Darent Apartment 71		
Kitchen/Living/ Dining Room	8.400m x 3.180m	27'7" x 10'5"	Kitchen/Living/ Dining Room	8.440m x 3.300m	27'8" x 10'10"
Bedroom 1	5.400m x 2.800m	17'9" x 9'2"	Bedroom 1	4.320m x 2.830m	14'2" x 9'3"
Bedroom 2	4.210m x 2.900m	13'10" x 9'6"	Bedroom 2	4.320m x 2.720m	14'2" x 8'11"
Total internal area	71 sq.m.	761 sq.ft.	Total internal area	71 sq.m.	762 sq.ft.
The Evenlode Apartment 67			The Westbourne Apartment 72		
Kitchen/Living/ Dining Room	6.780m x 5.670m	22'3" x 18'7"	Kitchen/Living/ Dining Room	6.050m x 4.570m	19'10" x 15'0"
Bedroom 1	5.600m x 2.850m	18'4" x 9'4"	Bedroom	4.740m x 2.790m	15'7" x 9'2"
Bedroom 2	3.380m x 2.380m	11'1" x 7'10"	Total internal area	52 sq.m.	555 sq.ft.
Total internal area	70 sq.m.	750 sq.ft.			

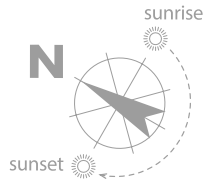
1 Bedroom 2 Bedroom B Boiler Indicates where dimensions are taken from

Some items shown in this key may be subject to change, and positions could vary from those indicated on this floorplate. Please refer to Sales Advisor for details of your selected plot. External finishes and landscaping may vary from plot to plot. Please refer to Sales Advisor for further details. All dimensions are approximate and should not be used for carpet sizes, appliance spaces, or furniture. Furniture not to scale and all positions are indicative. We operate a policy of continuous improvement and individual features such as kitchen and bathroom layouts, doors, windows, garages and elevational treatments may vary from time to time. Consequently these particulars should be treated as general guidance only and do not constitute a contract, part of a contract or a warranty.



# Huntercombe Walk

## Second Floor



Second Floor

The Coln Apartment 73			The Wey Apartment 78		
Kitchen/Living/ Dining Room	6.080m x 4.870m	19'11" x 16'0"	Kitchen/Living/ Dining Room	7.540m x 3.190m	24'9" x 10'6"
Bedroom	3.830m x 3.390m	12'7" x 11'1"	Bedroom 1	5.410m x 2.790m	17'9" x 9'2"
Total internal area	51 sq.m.	548 sq.ft.	Bedroom 2	4.310m x 2.900m	14'2" x 9'6"
			Total internal area	69 sq.m.	738 sq.ft.
The Effra Apartment 74			The Brent Apartment 79		
Kitchen/Living/ Dining Room	6.530m x 3.710m	21'5" x 12'2"	Kitchen/Living/ Dining Room	7.500m x 3.340m	24'7" x 10'11"
Bedroom	4.030m x 3.200m	13'3" x 10'6"	Bedroom 1	4.650m x 2.790m	15'3" x 9'2"
Total internal area	51 sq.m.	552 sq.ft.	Bedroom 2	3.510m x 2.760m	11'6" x 9'1"
			Total internal area	63 sq.m.	683 sq.ft.
The Ebbsfleet Apartment 75			The Ebbsfleet Apartment 80		
Kitchen/Living/ Dining Room	7.540m x 3.300m	24'9" x 10'10"	Kitchen/Living/ Dining Room	7.540m x 3.300m	24'9" x 10'10"
Bedroom 1	3.910m x 3.350m	12'10" x 11'0"	Bedroom 1	3.910m x 3.350m	12'10" x 11'0"
Bedroom 2	3.610m x 2.660m	11'10" x 8'9"	Bedroom 2	3.610m x 2.660m	11'10" x 8'9"
Total internal area	64 sq.m.	693 sq.ft.	Total internal area	64 sq.m.	693 sq.ft.
The Cole Apartment 76			The Ebbsfleet Apartment 81		
Kitchen/Living/ Dining Room	7.500m x 3.340m	24'7" x 10'11"	Kitchen/Living/ Dining Room	7.540m x 3.300m	24'9" x 10'10"
Bedroom 1	4.700m x 2.790m	15'5" x 9'2"	Bedroom 1	3.910m x 3.350m	12'10" x 11'0"
Bedroom 2	3.510m x 2.750m	11'6" x 9'0"	Bedroom 2	3.610m x 2.660m	11'10" x 8'9"
Total internal area	64 sq.m.	687 sq.ft.	Total internal area	64 sq.m.	693 sq.ft.
The Hamble Apartment 77			The Westbourne Apartment 82		
Kitchen/Living/ Dining Room	6.990m x 4.720m	22'11" x 15'6"	Kitchen/Living/ Dining Room	6.050m x 4.570m	19'10" x 15'0"
Bedroom	6.800m x 2.790m	22'4" x 9'2"	Bedroom	4.740m x 2.790m	15'7" x 9'2"
Total internal area	51 sq.m.	552 sq.ft.	Total internal area	52 sq.m.	555 sq.ft.

1 Bedroom 2 Bedroom B Boiler Indicates where dimensions are taken from

Some items shown in this key may be subject to change, and positions could vary from those indicated on this floorplate. Please refer to Sales Advisor for details of your selected plot. External finishes and landscaping may vary from plot to plot. Please refer to Sales Advisor for further details. All dimensions are approximate and should not be used for carpet sizes, appliance spaces, or furniture. Furniture not to scale and all positions are indicative. We operate a policy of continuous improvement and individual features such as kitchen and bathroom layouts, doors, windows, garages and elevational treatments may vary from time to time. Consequently these particulars should be treated as general guidance only and do not constitute a contract, part of a contract or a warranty.

Huntercombe Walk provides all the elements that cater to modern living, from the modern, flexible layouts to the balconies and terraces on selected plots.

---







## Specification

UPVC double glazed windows  
 Excellent selection of contemporary and traditional kitchen units and worktops to choose from\*  
 Stainless steel oven, hob and extractor  
 Contemporary sanitaryware from Roca  
 Mains linked smoke detectors  
 Selection of wall tiling options to bathrooms

Photographs are used for illustrative purposes only and depict typical interiors from previous Bellway developments. \*Subject to build stage.

