

# Spurland House

1 and 2 bedroom homes

---

Apartments 121 - 165



Bellway Homes Limited (Thames Valley Division)  
Pacific House, Imperial Way, Reading  
Berkshire RG2 0TD

Telephone: 0118 933 8020  
Fax: 0118 931 3929  
[www.bellway.co.uk](http://www.bellway.co.uk)

**Bellway**



# Huntercombe Walk

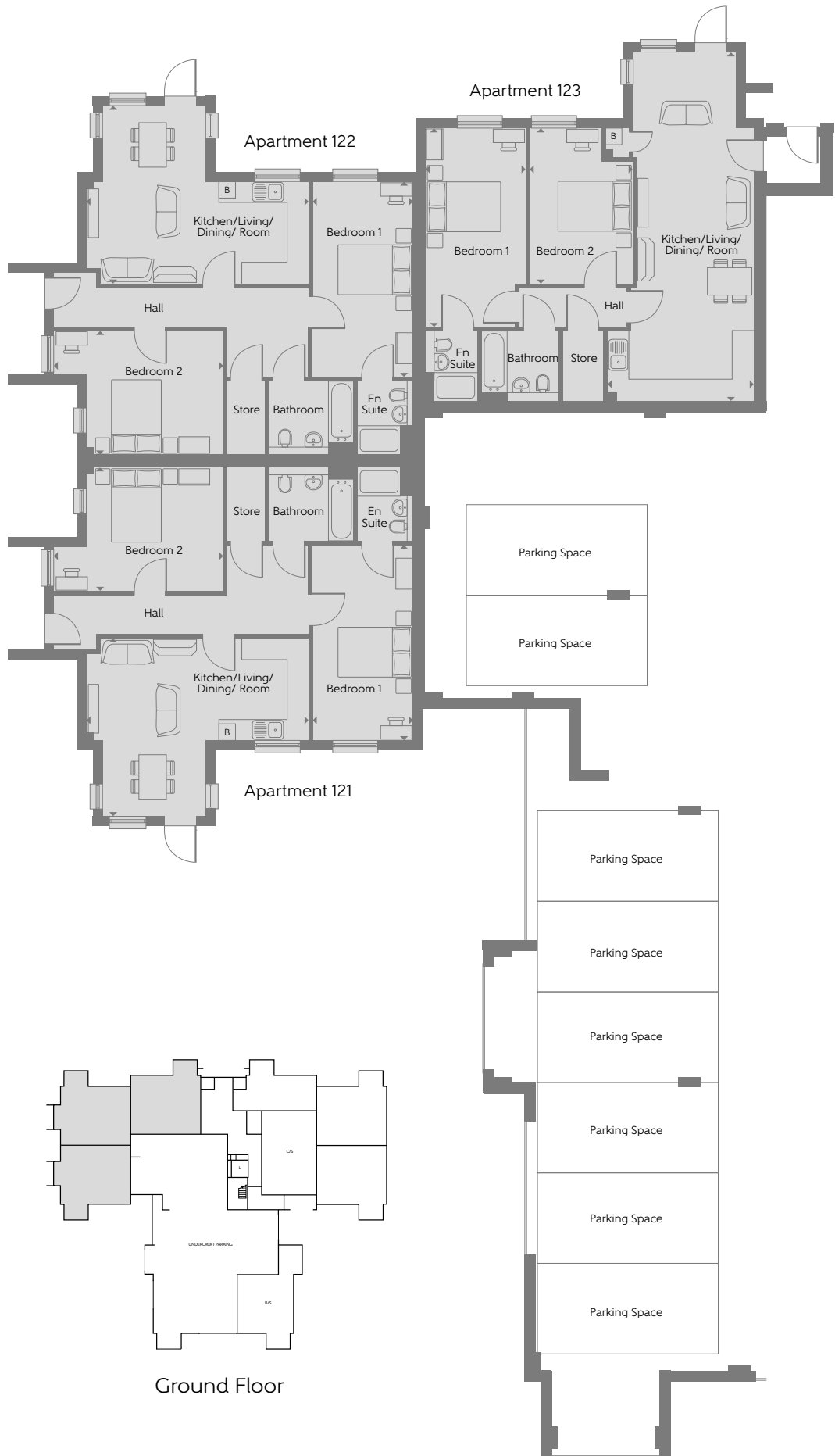
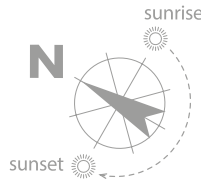
## Development layout



The site plan is drawn to show the relative position of individual properties. NOT TO SCALE. This is a two dimensional drawing and will not show land contours and gradients, boundary treatments, landscaping or local authority street lighting. Footpaths subject to change. For details of individual properties and availability please refer to our Sales Advisor.  
Key to plan: s/s Sub station v Visitor Parking

# Huntercombe Walk

## Ground Floor - West



The Skylark Apartment 121		
Kitchen/Living/ Dining Room	6.350m x 4.930m	20'10" x 16'2"
Bedroom 1	5.400m x 2.790m	17'9" x 9'2"
Bedroom 2	4.700m x 3.420m	15'5" x 11'3"
Total internal area	77 sq.m.	826 sq.ft.

The Skylark Apartment 122		
Kitchen/Living/ Dining Room	6.350m x 4.930m	20'10" x 16'2"
Bedroom 1	5.400m x 2.790m	17'9" x 9'2"
Bedroom 2	4.700m x 3.420m	15'5" x 11'3"
Total internal area	77 sq.m.	826 sq.ft.

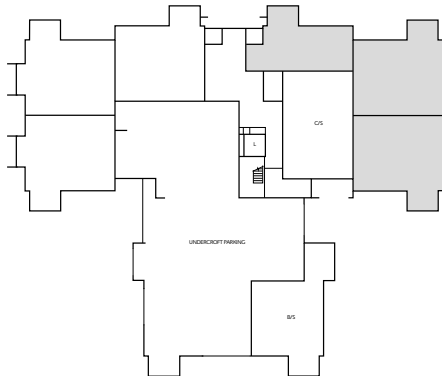
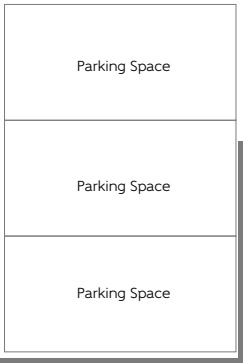
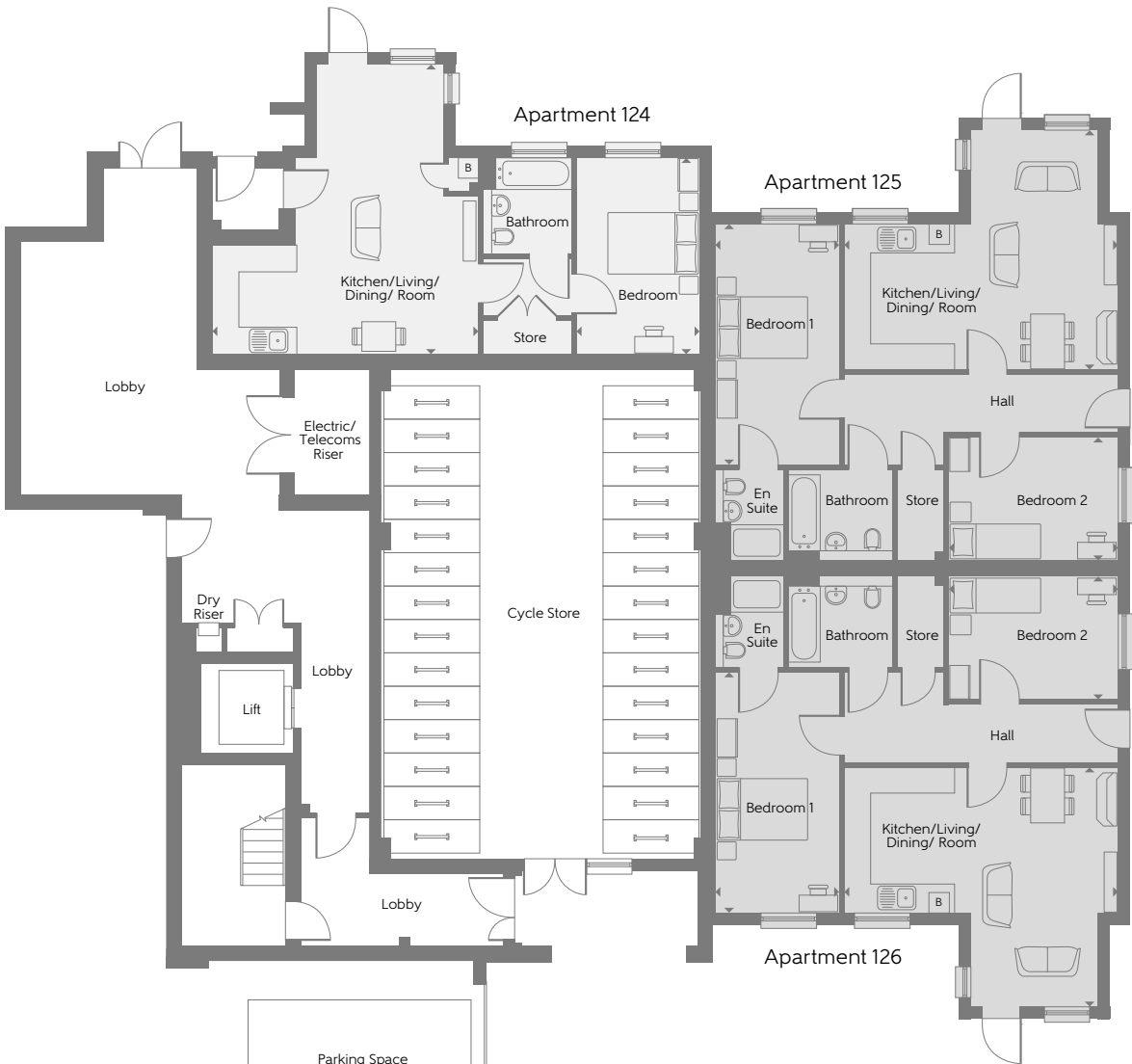
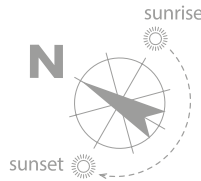
The Pipit Apartment 123		
Kitchen/Living/ Dining Room	9.640m x 9.050m	31'8" x 29'8"
Bedroom 1	5.500m x 2.770m	18'1" x 9'1"
Bedroom 2	4.300m x 2.870m	14'1" x 9'5"
Total internal area	75 sq.m.	802 sq.ft.

1 Bedroom 2 Bedroom 3 Bedroom Affordable Housing B Boiler ▶ Indicates where dimensions are taken from

Some items shown in this key may be subject to change, and positions could vary from those indicated on this floorplate. Please refer to Sales Advisor for details of your selected plot. External finishes and landscaping may vary from plot to plot. Please refer to Sales Advisor for further details. All dimensions are approximate and should not be used for carpet sizes, appliance spaces, or furniture. Furniture not to scale and all positions are indicative. We operate a policy of continuous improvement and individual features such as kitchen and bathroom layouts, doors, windows, garages and elevational treatments may vary from time to time. Consequently these particulars should be treated as general guidance only and do not constitute a contract, part of a contract or a warranty.

# Huntercombe Walk

## Ground Floor - East



Ground Floor

The Warbler Apartment 124		
Kitchen/Living/ Dining Room	6.500m x 5.980m	21'4" x 19'7"
Bedroom	4.400m x 2.770m	14'5" x 9'1"
Total internal area	50 sq.m.	543 sq.ft. 12

The Heron Apartment 125		
Kitchen/Living/ Dining Room	6.150m x 5.370m	20'2" x 17'7"
Bedroom 1	5.400m x 2.790m	17'9" x 9'2"
Bedroom 2	3.800m x 2.770m	12'6" x 9'1"
Total internal area	74 sq.m.	799 sq.ft.

The Heron Apartment 126		
Kitchen/Living/ Dining Room	6.150m x 5.370m	20'2" x 17'7"
Bedroom 1	5.400m x 2.790m	17'9" x 9'2"
Bedroom 2	3.800m x 2.770m	12'6" x 9'1"
Total internal area	74 sq.m.	799 sq.ft.

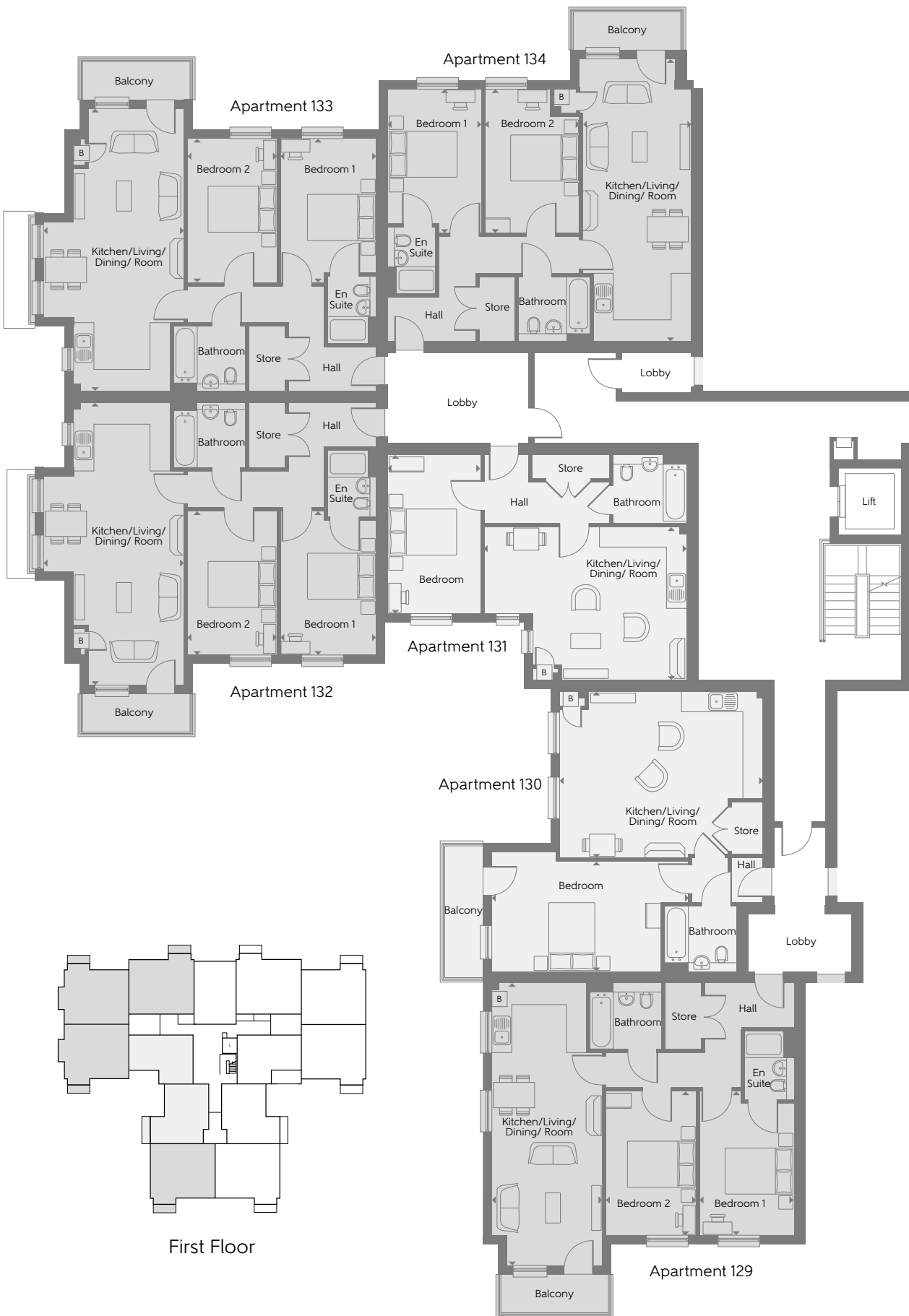
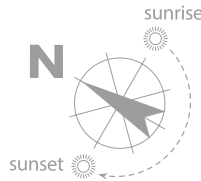
1 Bedroom 2 Bedroom Affordable Housing B Boiler ▶ Indicates where dimensions are taken from

Some items shown in this key may be subject to change, and positions could vary from those indicated on this floorplate. Please refer to Sales Advisor for details of your selected plot. External finishes and landscaping may vary from plot to plot. Please refer to Sales Advisor for further details. All dimensions are approximate and should not be used for carpet sizes, appliance spaces, or furniture. Furniture not to scale and all positions are indicative. We operate a policy of continuous improvement and individual features such as kitchen and bathroom layouts, doors, windows, garages and elevational treatments may vary from time to time. Consequently these particulars should be treated as general guidance only and do not constitute a contract, part of a contract or a warranty.



# Huntercombe Walk

## First Floor - West

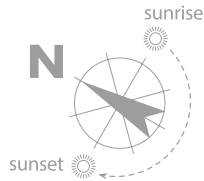


The Grebe			The Bunting		
Apartment 129			Apartment 132		
Kitchen/Living/ Dining Room	8.440m x 3.300m	27'8" x 10'10"	Kitchen/Living/ Dining Room	8.440m x 4.200m	27'8" x 13'9"
Bedroom 1	4.320m x 2.830m	14'2" x 9'3"	Bedroom 1	4.310m x 2.860m	14'2" x 9'5"
Bedroom 2	4.320m x 2.720m	14'2" x 8'11"	Bedroom 2	4.310m x 2.680m	14'2" x 8'10"
Total internal area	71 sq.m.	762 sq.ft.	Total internal area	73 sq.m.	790 sq.ft.
The Kestrel			The Bunting		
Apartment 130			Apartment 133		
Kitchen/Living/ Dining Room	6.080m x 4.980m	19'11" x 16'4"	Kitchen/Living/ Dining Room	8.440m x 4.200m	27'8" x 13'9"
Bedroom	5.860m x 3.290m	19'3" x 10'10"	Bedroom 1	4.310m x 2.860m	14'2" x 9'5"
Total internal area	56 sq.m.	608 sq.ft.	Bedroom 2	4.310m x 2.680m	14'2" x 8'10"
			Total internal area	73 sq.m.	790 sq.ft.
The Plover			The Egret		
Apartment 131			Apartment 134		
Kitchen/Living/ Dining Room	6.050m x 4.570m	19'10" x 15'0"	Kitchen/Living/ Dining Room	8.440m x 3.240m	27'8" x 10'8"
Bedroom	4.740m x 2.790m	15'7" x 9'2"	Bedroom 1	4.360m x 2.850m	14'4" x 9'4"
Total internal area	52 sq.m.	555 sq.ft.	Bedroom 2	4.310m x 2.840m	14'2" x 9'4"
			Total internal area	71 sq.m.	765 sq.ft.

Some items shown in this key may be subject to change, and positions could vary from those indicated on this floorplate. Please refer to Sales Advisor for details of your selected plot. External finishes and landscaping may vary from plot to plot. Please refer to Sales Advisor for further details. All dimensions are approximate and should not be used for carpet sizes, appliance spaces, or furniture. Furniture not to scale and all positions are indicative. We operate a policy of continuous improvement and individual features such as kitchen and bathroom layouts, doors, windows, garages and elevational treatments may vary from time to time. Consequently these particulars should be treated as general guidance only and do not constitute a contract, part of a contract or a warranty.

# Huntercombe Walk

## First Floor - East



The Kestrel Apartment 127				
Kitchen/Living/ Dining Room	6.080m x 4.980m	19'11" x 16'4"		
Bedroom	5.860m x 3.290m	19'3" x 10'10"		
Total internal area	56 sq.m.	608 sq.ft.		

The Grebe Apartment 128				
Kitchen/Living/ Dining Room	8.440m x 3.300m	27'8" x 10'10"		
Bedroom 1	4.320m x 2.830m	14'2" x 9'3"		
Bedroom 2	4.320m x 2.720m	14'2" x 8'11"		
Total internal area	71 sq.m.	762 sq.ft.		

The Starling Apartment 135				
Kitchen/Living/ Dining Room	8.760m x 2.910m	28'9" x 9'7"		
Bedroom	4.460m x 2.790m	14'8" x 9'2"		
Total internal area	51 sq.m.	547 sq.ft.		

The Egret Apartment 136				
Kitchen/Living/ Dining Room	8.440m x 3.240m	27'8" x 10'8"		
Bedroom 1	4.360m x 2.850m	14'4" x 9'4"		
Bedroom 2	4.310m x 2.840m	14'2" x 9'4"		
Total internal area	71 sq.m.	765 sq.ft.		

The Grebe Apartment 137				
Kitchen/Living/ Dining Room	8.440m x 3.300m	27'8" x 10'10"		
Bedroom 1	4.320m x 2.830m	14'2" x 9'3"		
Bedroom 2	4.320m x 2.720m	14'2" x 8'11"		
Total internal area	71 sq.m.	762 sq.ft.		

The Grebe Apartment 138				
Kitchen/Living/ Dining Room	8.440m x 3.300m	27'8" x 10'10"		
Bedroom 1	4.320m x 2.830m	14'2" x 9'3"		
Bedroom 2	4.320m x 2.720m	14'2" x 8'11"		
Total internal area	71 sq.m.	762 sq.ft.		

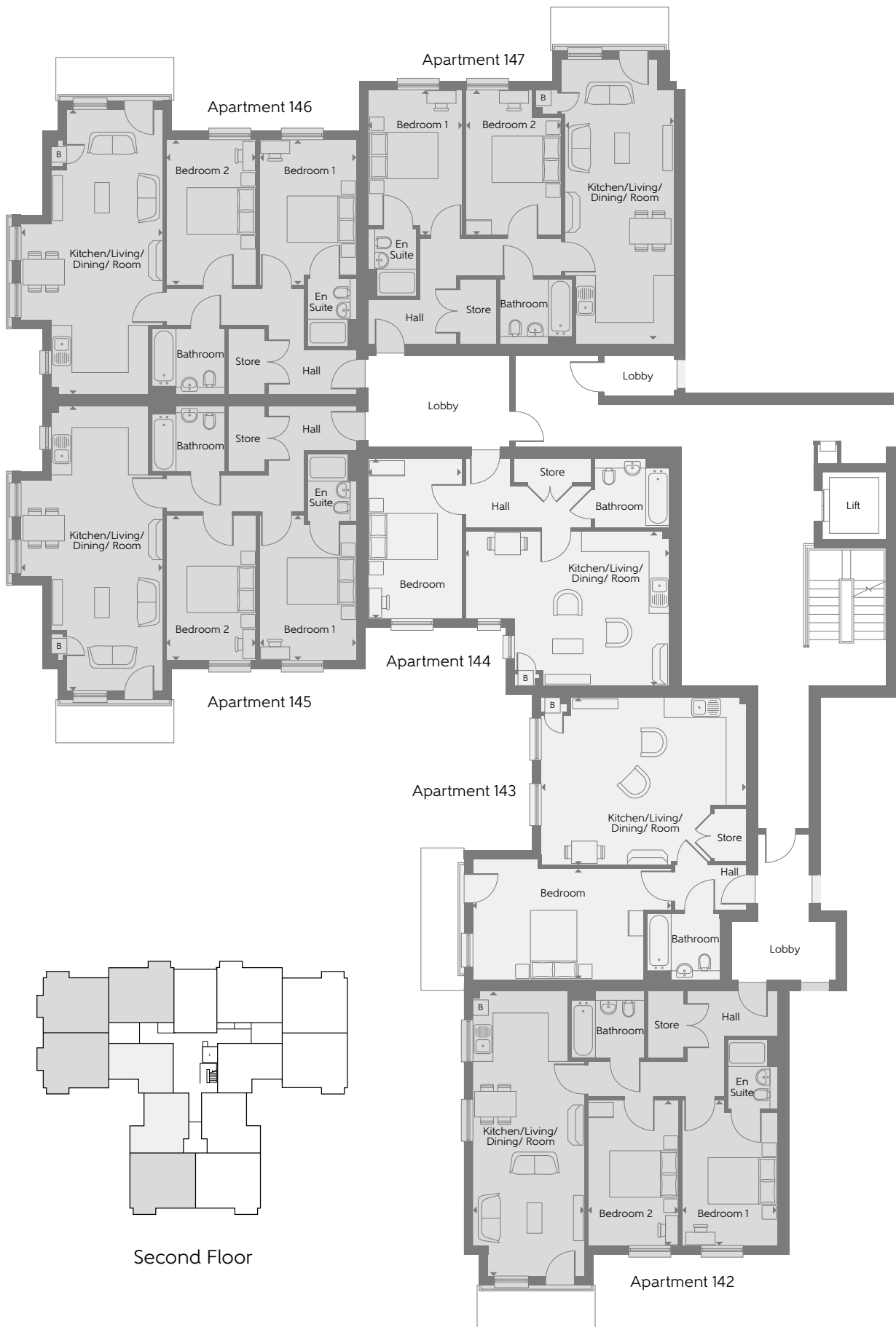
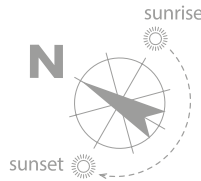
The Plover Apartment 139				
Kitchen/Living/ Dining Room	6.050m x 4.570m	19'10" x 15'0"		
Bedroom	4.740m x 2.790m	15'7" x 9'2"		
Total internal area	52 sq.m.	555 sq.ft.		

1 Bedroom 2 Bedroom 3 Bedroom Affordable Housing B Boiler Indicates where dimensions are taken from

Some items shown in this key may be subject to change, and positions could vary from those indicated on this floorplate. Please refer to Sales Advisor for details of your selected plot. External finishes and landscaping may vary from plot to plot. Please refer to Sales Advisor for further details. All dimensions are approximate and should not be used for carpet sizes, appliance spaces, or furniture. Furniture not to scale and all positions are indicative. We operate a policy of continuous improvement and individual features such as kitchen and bathroom layouts, doors, windows, garages and elevational treatments may vary from time to time. Consequently these particulars should be treated as general guidance only and do not constitute a contract, part of a contract or a warranty.

# Huntercombe Walk

## Second Floor - West



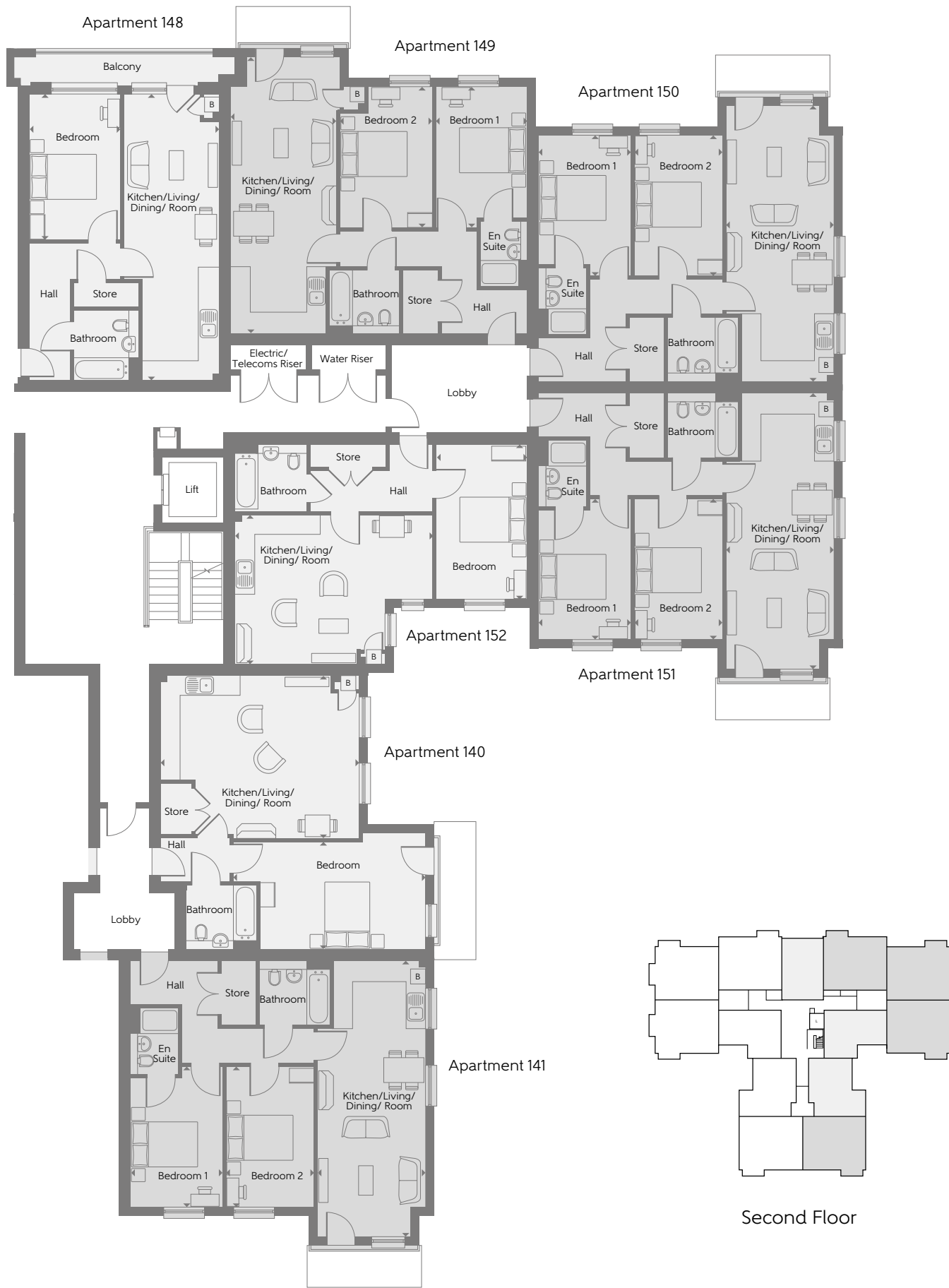
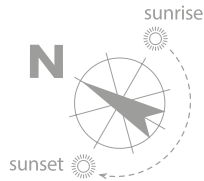
The Grebe			The Bunting		
Apartment 142			Apartment 145		
Kitchen/Living/ Dining Room	8.440m x 3.300m	27'8" x 10'10"	Kitchen/Living/ Dining Room	8.440m x 4.200m	27'8" x 13'9"
Bedroom 1	4.320m x 2.830m	14'2" x 9'3"	Bedroom 1	4.310m x 2.860m	14'2" x 9'5"
Bedroom 2	4.320m x 2.720m	14'2" x 8'11"	Bedroom 2	4.310m x 2.680m	14'2" x 8'10"
Total internal area	71 sq.m.	762 sq.ft.	Total internal area	73 sq.m.	790 sq.ft.
The Kestrel			The Bunting		
Apartment 143			Apartment 146		
Kitchen/Living/ Dining Room	6.080m x 4.980m	19'11" x 16'4"	Kitchen/Living/ Dining Room	8.440m x 4.200m	27'8" x 13'9"
Bedroom	5.860m x 3.290m	19'3" x 10'10"	Bedroom 1	4.310m x 2.860m	14'2" x 9'5"
Total internal area	56 sq.m.	608 sq.ft.	Bedroom 2	4.310m x 2.680m	14'2" x 8'10"
			Total internal area	73 sq.m.	790 sq.ft.
The Plover			The Egret		
Apartment 144			Apartment 147		
Kitchen/Living/ Dining Room	6.050m x 4.570m	19'10" x 15'0"	Kitchen/Living/ Dining Room	8.440m x 3.240m	27'8" x 10'8"
Bedroom	4.740m x 2.790m	15'7" x 9'2"	Bedroom 1	4.360m x 2.850m	14'4" x 9'4"
Total internal area	52 sq.m.	555 sq.ft.	Bedroom 2	4.310m x 2.840m	14'2" x 9'4"
			Total internal area	71 sq.m.	765 sq.ft.

Some items shown in this key may be subject to change, and positions could vary from those indicated on this floorplate. Please refer to Sales Advisor for details of your selected plot. External finishes and landscaping may vary from plot to plot. Please refer to Sales Advisor for further details. All dimensions are approximate and should not be used for carpet sizes, appliance spaces, or furniture. Furniture not to scale and all positions are indicative. We operate a policy of continuous improvement and individual features such as kitchen and bathroom layouts, doors, windows, garages and elevational treatments may vary from time to time. Consequently these particulars should be treated as general guidance only and do not constitute a contract, part of a contract or a warranty.



# Huntercombe Walk

## Second Floor - East



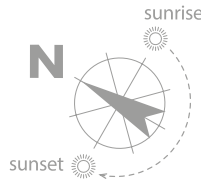
<b>The Kestrel</b>				
<b>Apartment 140</b>				
Kitchen/Living/ Dining Room	6.080m x 4.980m	19'11" x 16'4"		
Bedroom	5.860m x 3.290m	19'3" x 10'10"		
<b>Total internal area</b>	<b>56 sq.m.</b>	<b>608 sq.ft.</b>		
<b>The Grebe</b>				
<b>Apartment 150</b>				
Kitchen/Living/ Dining Room	8.440m x 3.300m	27'8" x 10'10"		
Bedroom 1	4.320m x 2.830m	14'2" x 9'3"		
Bedroom 2	4.320m x 2.720m	14'2" x 8'11"		
<b>Total internal area</b>	<b>71 sq.m.</b>	<b>762 sq.ft.</b>		
<b>The Grebe</b>				
<b>Apartment 141</b>				
Kitchen/Living/ Dining Room	8.440m x 3.300m	27'8" x 10'10"		
Bedroom 1	4.320m x 2.830m	14'2" x 9'3"		
Bedroom 2	4.320m x 2.720m	14'2" x 8'11"		
<b>Total internal area</b>	<b>71 sq.m.</b>	<b>762 sq.ft.</b>		
<b>The Grebe</b>				
<b>Apartment 151</b>				
Kitchen/Living/ Dining Room	8.440m x 3.300m	27'8" x 10'10"		
Bedroom 1	4.320m x 2.830m	14'2" x 9'3"		
Bedroom 2	4.320m x 2.720m	14'2" x 8'11"		
<b>Total internal area</b>	<b>71 sq.m.</b>	<b>762 sq.ft.</b>		
<b>The Starling</b>				
<b>Apartment 148</b>				
Kitchen/Living/ Dining Room	8.760m x 2.910m	28'9" x 9'7"		
Bedroom	4.460m x 2.790m	14'8" x 9'2"		
<b>Total internal area</b>	<b>51 sq.m.</b>	<b>547 sq.ft.</b>		
<b>The Plover</b>				
<b>Apartment 152</b>				
Kitchen/Living/ Dining Room	6.050m x 4.570m	19'10" x 15'0"		
Bedroom	4.740m x 2.790m	15'7" x 9'2"		
<b>Total internal area</b>	<b>52 sq.m.</b>	<b>555 sq.ft.</b>		
<b>The Egret</b>				
<b>Apartment 149</b>				
Kitchen/Living/ Dining Room	8.440m x 3.240m	27'8" x 10'8"		
Bedroom 1	4.360m x 2.850m	14'4" x 9'4"		
Bedroom 2	4.310m x 2.840m	14'2" x 9'4"		
<b>Total internal area</b>	<b>71 sq.m.</b>	<b>765 sq.ft.</b>		

1 Bedroom 2 Bedroom Affordable Housing B Boiler Indicates where dimensions are taken from

Some items shown in this key may be subject to change, and positions could vary from those indicated on this floorplate. Please refer to Sales Advisor for details of your selected plot. External finishes and landscaping may vary from plot to plot. Please refer to Sales Advisor for further details. All dimensions are approximate and should not be used for carpet sizes, appliance spaces, or furniture. Furniture not to scale and all positions are indicative. We operate a policy of continuous improvement and individual features such as kitchen and bathroom layouts, doors, windows, garages and elevational treatments may vary from time to time. Consequently these particulars should be treated as general guidance only and do not constitute a contract, part of a contract or a warranty.

# Huntercombe Walk

## Third Floor - West



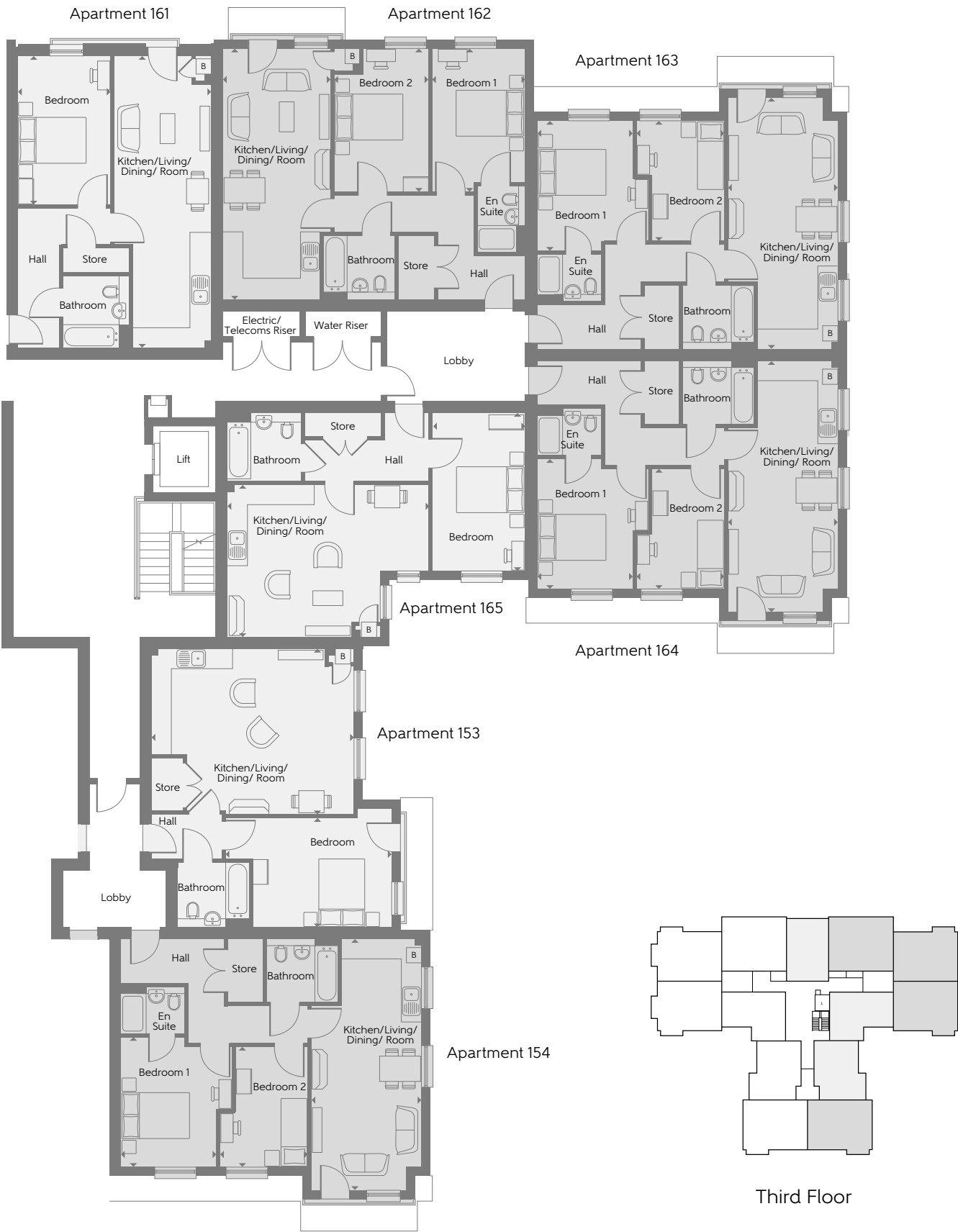
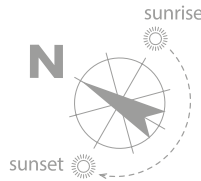
The Snipe			The Kingfisher		
Apartment 155			Apartment 158		
Kitchen/Living/ Dining Room	7.540m x 3.300m	24'9" x 10'10"	Kitchen/Living/ Dining Room	7.540m x 4.200m	24'9" x 13'9"
Bedroom 1	3.910m x 3.350m	12'10" x 11'0"	Bedroom 1	3.910m x 3.350m	12'10" x 11'0"
Bedroom 2	3.610m x 2.660m	11'10" x 8'9"	Bedroom 2	3.610m x 2.660m	11'10" x 8'9"
Total internal area	64 sq.m.	693 sq.ft.	Total internal area	66 sq.m.	715 sq.ft.
The Kestrel			The Kingfisher		
Apartment 156			Apartment 159		
Kitchen/Living/ Dining Room	6.080m x 4.980m	19'11" x 16'4"	Kitchen/Living/ Dining Room	7.540m x 4.200m	24'9" x 13'9"
Bedroom	5.860m x 3.290m	19'3" x 10'10"	Bedroom 1	3.910m x 3.350m	12'10" x 11'0"
Total internal area	56 sq.m.	608 sq.ft.	Bedroom 2	3.610m x 2.660m	11'10" x 8'9"
			Total internal area	66 sq.m.	715 sq.ft.
The Plover			The Lapwing		
Apartment 157			Apartment 160		
Kitchen/Living/ Dining Room	6.050m x 4.570m	19'10" x 15'0"	Kitchen/Living/ Dining Room	7.540m x 3.240m	24'9" x 10'8"
Bedroom	4.740m x 2.790m	15'7" x 9'2"	Bedroom 1	4.310m x 2.820m	14'2" x 9'3"
Total internal area	52 sq.m.	555 sq.ft.	Bedroom 2	4.310m x 2.820m	14'2" x 9'3"
			Total internal area	69 sq.m.	738 sq.ft.

1 Bedroom 2 Bedroom Affordable Housing B Boiler Indicates where dimensions are taken from

Some items shown in this key may be subject to change, and positions could vary from those indicated on this floorplate. Please refer to Sales Advisor for details of your selected plot. External finishes and landscaping may vary from plot to plot. Please refer to Sales Advisor for further details. All dimensions are approximate and should not be used for carpet sizes, appliance spaces, or furniture. Furniture not to scale and all positions are indicative. We operate a policy of continuous improvement and individual features such as kitchen and bathroom layouts, doors, windows, garages and elevational treatments may vary from time to time. Consequently these particulars should be treated as general guidance only and do not constitute a contract, part of a contract or a warranty.

# Huntercombe Walk

## Third Floor - East



<b>The Kestrel</b>				
<b>Apartment 153</b>				
Kitchen/Living/Dining Room	6.080m x 4.980m	19'11" x 16'4"		
Bedroom	5.860m x 3.290m	19'3" x 10'10"		
<b>Total internal area</b>	<b>56 sq.m.</b>	<b>608 sq.ft.</b>		
<b>The Snipe</b>				
<b>Apartment 163</b>				
Kitchen/Living/Dining Room	7.540m x 3.300m	24'9" x 10'10"		
Bedroom 1	3.910m x 3.350m	12'10" x 11'0"		
Bedroom 2	3.610m x 2.660m	11'10" x 8'9"		
<b>Total internal area</b>	<b>64 sq.m.</b>	<b>693 sq.ft.</b>		
<b>The Snipe</b>				
<b>Apartment 154</b>				
Kitchen/Living/Dining Room	7.540m x 3.300m	24'9" x 10'10"		
Bedroom 1	3.910m x 3.350m	12'10" x 11'0"		
Bedroom 2	3.610m x 2.660m	11'10" x 8'9"		
<b>Total internal area</b>	<b>64 sq.m.</b>	<b>693 sq.ft.</b>		
<b>The Snipe</b>				
<b>Apartment 164</b>				
Kitchen/Living/Dining Room	7.540m x 3.300m	24'9" x 10'10"		
Bedroom 1	3.910m x 3.350m	12'10" x 11'0"		
Bedroom 2	3.610m x 2.660m	11'10" x 8'9"		
<b>Total internal area</b>	<b>64 sq.m.</b>	<b>693 sq.ft.</b>		
<b>The Starling</b>				
<b>Apartment 161</b>				
Kitchen/Living/Dining Room	8.760m x 2.910m	28'9" x 9'7"		
Bedroom	4.460m x 2.790m	14'8" x 9'2"		
<b>Total internal area</b>	<b>51 sq.m.</b>	<b>547 sq.ft.</b>		
<b>The Plover</b>				
<b>Apartment 165</b>				
Kitchen/Living/Dining Room	6.050m x 4.570m	19'10" x 15'0"		
Bedroom	4.740m x 2.790m	15'7" x 9'2"		
<b>Total internal area</b>	<b>52 sq.m.</b>	<b>555 sq.ft.</b>		
<b>The Lapwing</b>				
<b>Apartment 162</b>				
Kitchen/Living/Dining Room	7.540m x 3.240m	24'9" x 10'8"		
Bedroom 1	4.310m x 2.820m	14'2" x 9'3"		
Bedroom 2	4.310m x 2.820m	14'2" x 9'3"		
<b>Total internal area</b>	<b>69 sq.m.</b>	<b>738 sq.ft.</b>		

1 Bedroom 2 Bedroom Affordable Housing B Boiler Indicates where dimensions are taken from

Some items shown in this key may be subject to change, and positions could vary from those indicated on this floorplate. Please refer to Sales Advisor for details of your selected plot. External finishes and landscaping may vary from plot to plot. Please refer to Sales Advisor for further details. All dimensions are approximate and should not be used for carpet sizes, appliance spaces, or furniture. Furniture not to scale and all positions are indicative. We operate a policy of continuous improvement and individual features such as kitchen and bathroom layouts, doors, windows, garages and elevational treatments may vary from time to time. Consequently these particulars should be treated as general guidance only and do not constitute a contract, part of a contract or a warranty.





## Specification

UPVC double glazed windows  
Excellent selection of contemporary and traditional kitchen units and worktops to choose from\*  
Stainless steel oven, hob and extractor  
Contemporary sanitaryware from Roca  
Mains linked smoke detectors  
Selection of wall tiling options to bathrooms

Photographs are used for illustrative purposes only and depict typical interiors from previous Bellway developments. \*Subject to build stage.

