



ODYSSEY
PLACE



MONTREUX
HOMES



WELCOME TO ODYSSEY PLACE

Your next adventure awaits at Odyssey Place, a collection of 1 & 2 bedroom apartments situated in the Thameside town of Maidenhead.

Fulfilling the evolving expectations of modern apartment living, these homes have been crafted and finished to our premium standards, benefitting from a high specification throughout. This standard of living is matched only by the location, ideal for those who desire the urban opportunities of Maidenhead and the glorious splendour of its surrounding countryside.



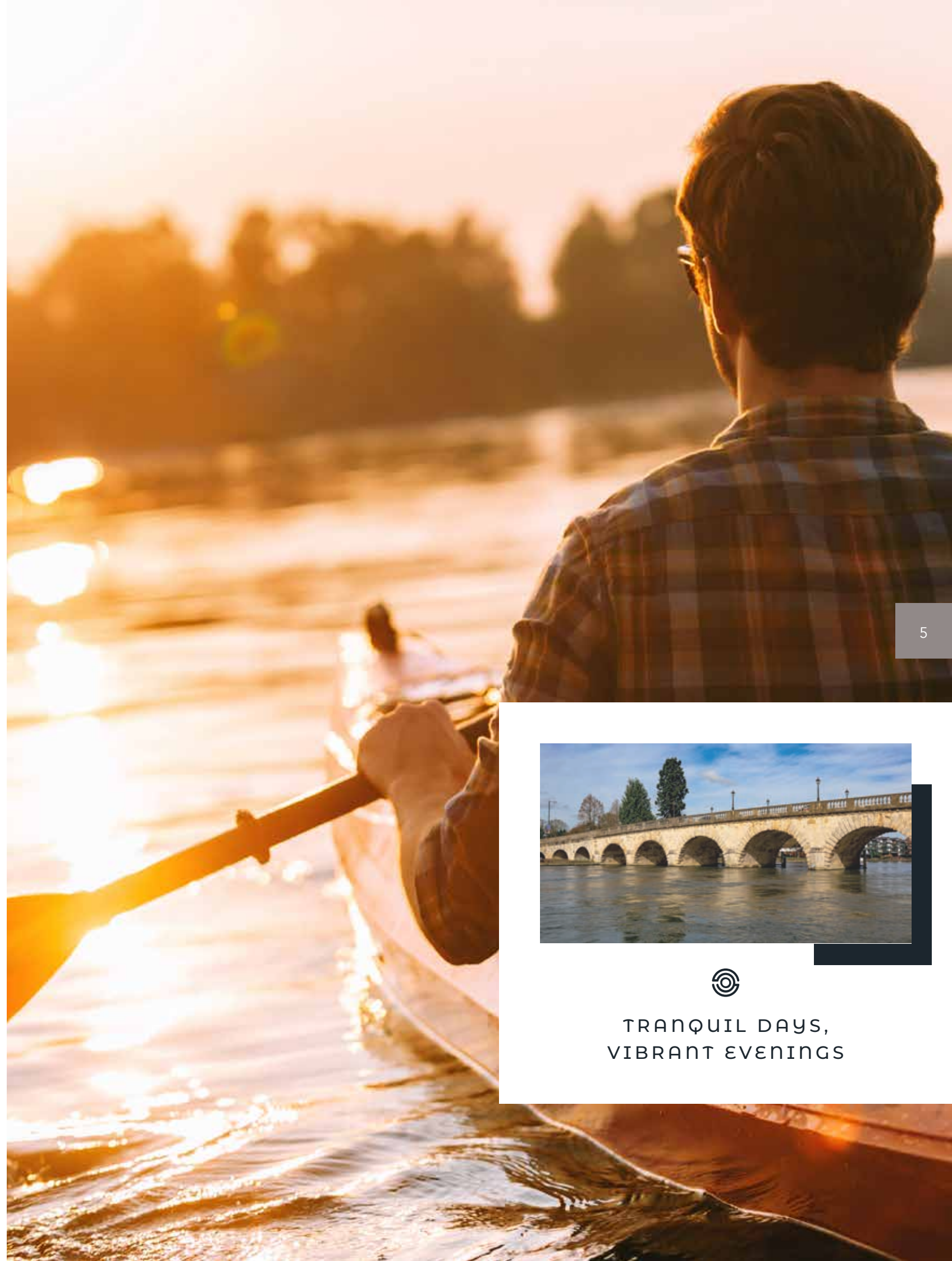
STYLISH
APARTMENTS IN
THE HEART OF
MAIDENHEAD



DISCOVER MAIDENHEAD

Ideally positioned on the northern outskirts of Maidenhead, you'll be perfectly placed to enjoy everything this town has to offer.

No matter what you're in the mood for, Maidenhead offers a wealth of ways to make the most of your precious downtime, whether it's a meal out, an afternoon of shopping, working up a sweat in a gym or playing your favourite sport. Keen explorers and walkers alike are catered for as well, who within only minutes can find themselves amongst the majesty of the Chiltern Hills Area of Outstanding Natural Beauty.



TRANQUIL DAYS,
VIBRANT EVENINGS

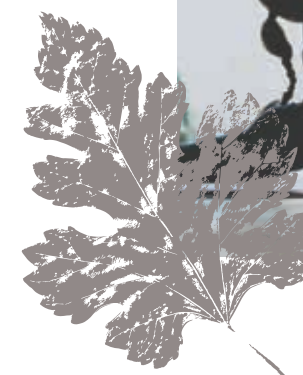
NATURE AT YOUR DOOR

You'll have endless opportunities to connect with nature, whether it's a few hours relaxing in a nearby park or more challenging adventures further afield.

Maidenhead lies firmly on the doorstep of the incredible Chiltern Hills Area of Outstanding Natural Beauty. Amongst its vast landscapes are an array of hidden gems to discover, from charming ancient villages to protected historic landmarks and monuments. If that's not enough, to the east of Maidenhead you can discover Colne Valley Regional Park, a 43 square mile conclave of country parks, nature reserves and wildlife habitats, lakes and rivers.



Whether you fancy taking a stroll amongst the wild flowers in Oaken Grove Park, or gathering your friends together for a game on one of the sports courts at Kidwells Park, there are ample outdoor activities available to you in Maidenhead.



OAKEN GROVE PARK

9 minutes, 1.2 miles

Stop by for a match on the tennis court, try out the outdoor gym or catch up with friends over a coffee from The Tuck Shop.

RAY MILL ISLAND

8 minutes, 1.4 miles

Wander along the river bank, enjoy a tranquil picnic in the sun or take a boat trip along the River Thames.

PINKEYS GREEN

13 minutes*, 2.1 miles

Meander through the hay meadows at Pinkneys Green on warm summers night, appreciate the sunset and take in the wealth of wildflowers.

NORTH TOWN MOOR

3 minutes, 0.6 miles

Take a stroll through the lush green open space or take some time out to enjoy the community orchard.

KIDWELLS PARK

5 minutes, 0.8 miles

Kidwells Park boasts three hectares of open space, ideal for picnics on a summers day.

CHILTERN HILLS

36 minutes*, 6.2 miles

Covering 324 square miles of rolling countryside, this Area of Outstanding Natural Beauty is the ideal place for a day out.



INDULGE YOURSELF


Maidenhead is a melting pot of some of the world's best flavours and styles of cooking, home to an array of vibrant eateries — both chain and independent — offering cuisines like Italian, Thai, Japanese and Chinese.

For those after something heartier, Maidenhead has no shortage of pubs to choose from, all offering traditional gastro fare. These establishments are complemented by the range of bakeries serving up sweet treats and homemade sandwiches, and cafés providing fresh coffee and light lunches.

8




ROUX AT SKINDLESS

1.5 miles, 9 minutes 


Enjoy the stunning views over the River Thames with a cocktail in your hand from the beautiful terrace this brasserie has to offer.

THE FAT DUCK IN BRAY

2.3 miles, 12 minutes 

Discover The Fat Duck in Bray and explore Heston's elaborate dishes in this 3 Michelin star restaurant.


THE WATERSIDE INN, BRAY

2.5 miles, 13 minutes 

Take time to chill in this picturesque Thameside setting and enjoy the three Michelin star cuisine.


W
R
I
D

COPPA CLUB

1.1 miles, 6 minutes 

Thoughtful, unfussy, European food from small plates and snacks to grilled mains, sourdough pizzas and healthy salads.

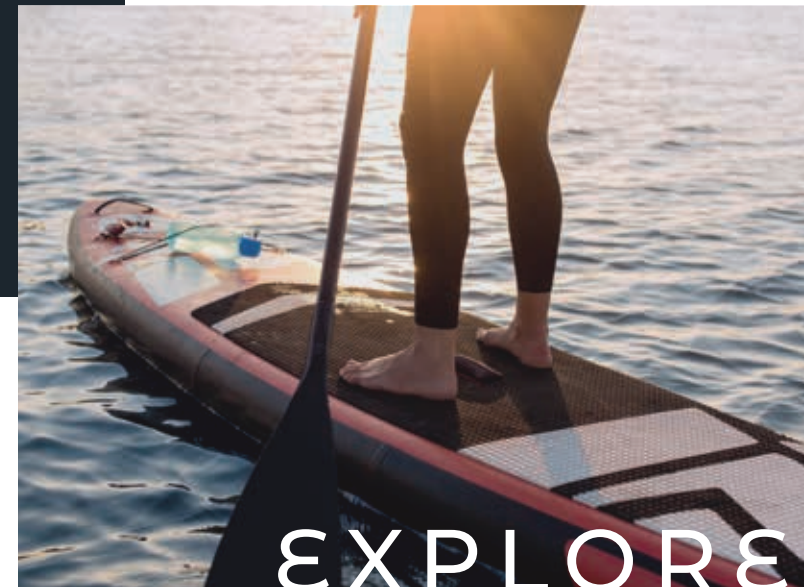
THE BOATHOUSE AT BOULTER'S LOCK

1.4 miles, 8 minutes 


Relax and unwind at Maidenhead's finest al fresco dining and drinking spot.



EXPLORE



NORDEN FARM CENTRE FOR THE ARTS

1.8 miles, 11 minutes 

A hub for cultural activities, Norden Farm is the ideal place to watch a local gig, experience a live theatre performance or immerse yourself in the latest movies.



Cinephiles will feel right at home at Maidenhead's ODEON Luxe, a state-of-the-art cinema showcasing all the latest blockbusters. Those who want to maintain an active lifestyle have a choice of facilities on the doorstep, headlined by the modern David Lloyd Health Club, whilst golfers can stay sharp at Maidenhead Golf Club just a 10-minute drive away.



NICHOLSONS SHOPPING CENTRE

0.8 miles, 6 minutes 

With over 60 stores you'll find everything from artisan homeware, hand-finished jewellery and trip ready ski wear here.



Whether it's picking up a gift for a loved one or just finding something to complete an outfit, Maidenhead offers a blend of high-street mainstays and independent boutiques ranging across fashion, technology, jewellery, homeware and health and beauty. It's also home to a choice of supermarkets to complete the weekly food shop, including a Sainsbury's and a Marks & Spencer.

s
h
o
p

9

CLOSER THAN YOU THINK

The bright lights of London are conveniently close and signal endless possibilities for work, leisure and entertainment in the capital.

A train journey of less than an hour brings you to the heart of this cosmopolitan city that never sleeps. Here, breath-taking music and arts venues, world class restaurants and bars and unrivalled shopping opportunities await you. Be enthralled by a West End show, meet friends for dinner or watch a your favourite team in action and then catch the fast train home to your contemporary Odyssey Place apartment.

HENLEY-ON-THAMES

One of Britain's most beautiful towns, Henley-on-Thames is a must for a day out and its charm will keep enticing you back.

Take to the river and enjoy the quintessentially English scene, or visit during the annual five-day Henley Royal Regatta and enjoy the racing. If you prefer dry land, settle down in one of the many hidden pubs and watch the world go by.

Surrounded by the Chilton hills and a lush green landscape, Henley-on-Thames makes the perfect base for walking and exploring.



WINDSOR

Nothing prepares you for the beauty of this jewel of a town, with its historic landmarks and riverside setting.

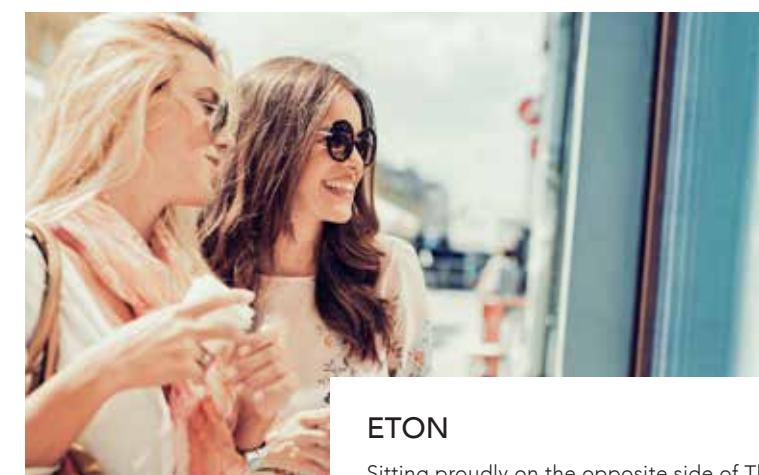
From the tree-lined avenue which leads to the Castle, to the awe-inspiring Royal residence and the gardens of The Great Park, to the charming shops and eateries, you'll find a wealth to see and do. Parts of the Castle are open to visitors at certain times, as is much of the 5,000 acre Royal Park.



ASCOT

The glamour of the Royal Ascot meeting and the famous Ascot Racecourse has rubbed off on this small town, which has a big personality.

A day watching the racing at this spectacular racecourse is something you'll remember, even if you aren't in the Royal Enclosure. The pretty town has an impressive selection of bars, restaurants and music venues to suit all tastes, so it is worth returning outside the racing season.



ETON

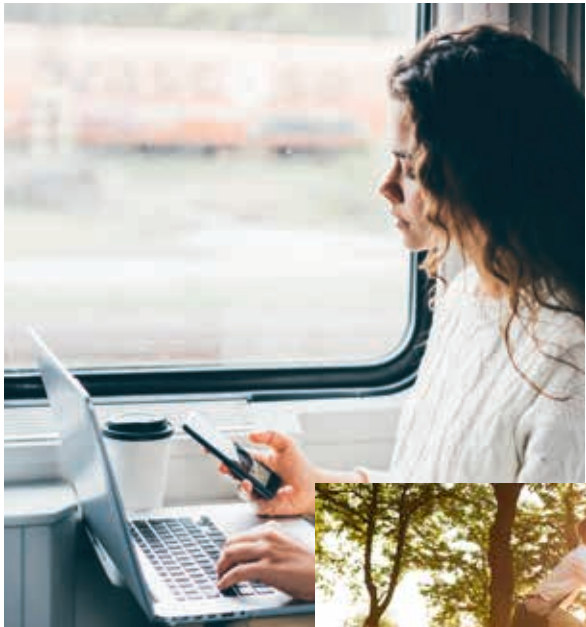
Sitting proudly on the opposite side of The Thames to Windsor, Eton has an old-world charm and there are a host of reasons to visit.

The town has a fascinating history and, of course, a love affair with the river that dominates life here. Today Eton has plenty to offer, including excellent shopping. Small independent shops dominate and provide so much choice you won't go home empty handed. Pubs, restaurant and cafés are also well represented.

THE IDEAL LOCATION

No matter how you prefer to travel, Maidenhead is well connected for commuters and explorers alike.

Maidenhead benefits from an excellent road network, with the M4 motorway just under 10 minutes away providing direct links to Reading, Slough and even Heathrow Airport. Those who like to stay connected to the capital can so do via Maidenhead Station, conveniently situated just a five-minute drive away offering regular services taking just under an hour. Plus with Crossrail coming soon to Maidenhead your journey times will be even faster.



DISCOVER THE DEVELOPMENT

Sitting on the northern outskirts of Maidenhead's town centre, Odyssey Place puts you on the cusp of everything the town has to offer. Showcasing our meticulous attention to detail and passion for craft, the quality inside is matched only by the homes' immediate surroundings.

Careful thought has gone into offering a layout that's aesthetically pleasing but doesn't sacrifice on elements of access. Further consideration has been made to maximise space throughout, with parking available to offer residents peace of mind each and every day.

This site plan is a guide for illustrative purposes only. Landscaping shown is indicative only.





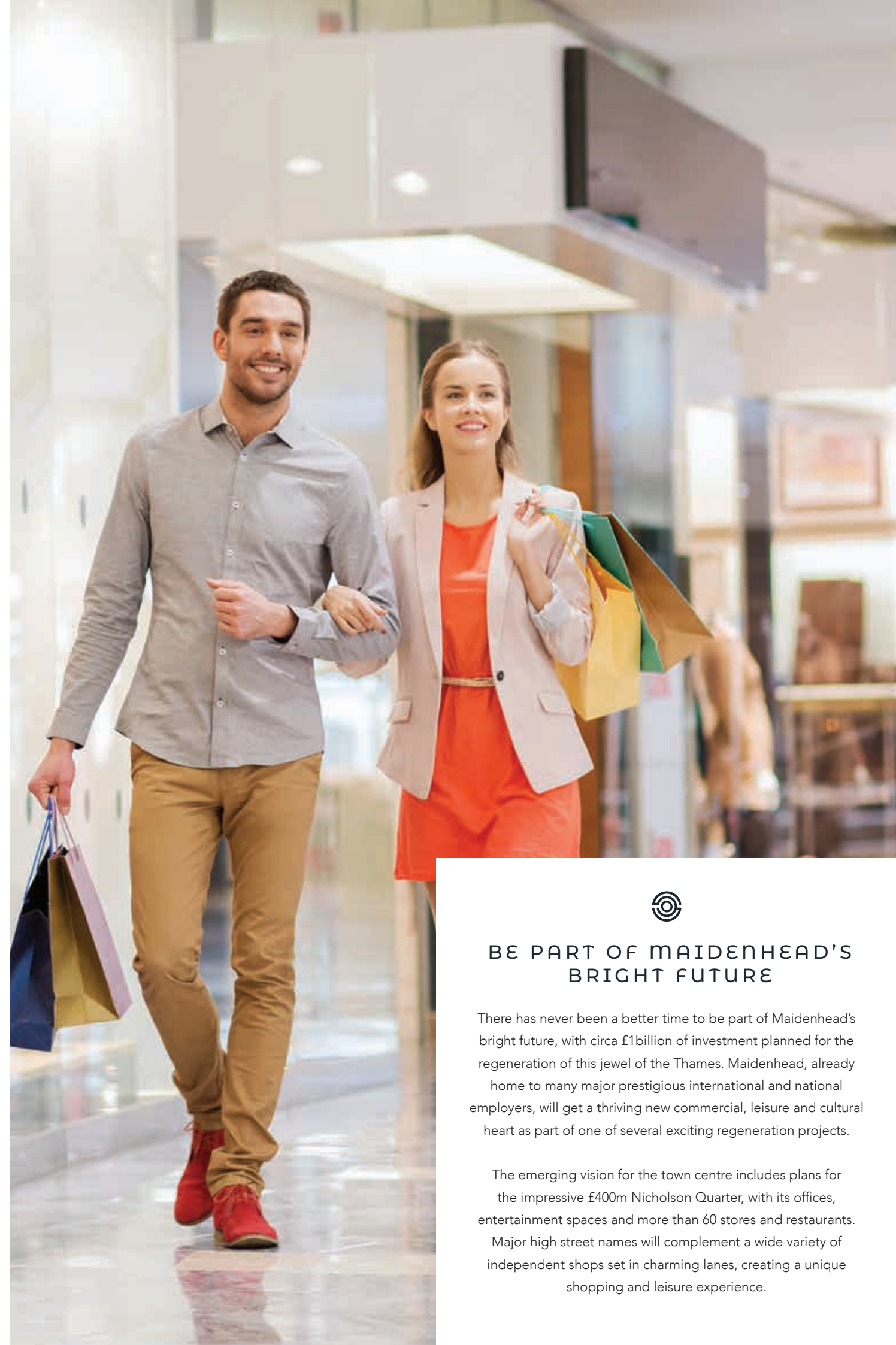
A HOME DESIGNED WITH you in mind

Enjoy an enviable lifestyle in your carefully designed contemporary home at Odyssey Place, ideally located to enjoy the best of town and country. From the practical layout of the sleek kitchen to the light-filled flexible living space, we have put convenience and style at the heart of your home.

Most of these desirable apartments also come with a terrace or balcony and benefit from gated parking and video entry phones for peace of mind.

We've thought of everything: energy efficient appliances, wi-fi controlled intelligent electric heaters and photovoltaic panels help with energy use, while your apartment is pre-wired to accept SKY TV and high speed broadband, making it easier to subscribe.

A new home means low maintenance and freedom from having to decorate when you move in, plus it comes with a 10-year building warranty. There is also a caretaker who cleans the communal areas and maintains the site.



BE PART OF MAIDENHEAD'S BRIGHT FUTURE

There has never been a better time to be part of Maidenhead's bright future, with circa £1 billion of investment planned for the regeneration of this jewel of the Thames. Maidenhead, already home to many major prestigious international and national employers, will get a thriving new commercial, leisure and cultural heart as part of one of several exciting regeneration projects.

The emerging vision for the town centre includes plans for the impressive £400m Nicholson Quarter, with its offices, entertainment spaces and more than 60 stores and restaurants. Major high street names will complement a wide variety of independent shops set in charming lanes, creating a unique shopping and leisure experience.

STUNNING SPECIFICATION

KITCHEN

- ⦿ Matt slate contemporary kitchen units with soft close doors and drawers
- ⦿ Composite stone worktops
- ⦿ Under unit LED lighting
- ⦿ Undermounted single bowl sink unit
- ⦿ Courbe Purquartz black tap
- ⦿ Composite stone upstand
- ⦿ Integrated Bosch oven, hob, microwave and extractor hood
- ⦿ Integrated dishwasher and fridge/freezer



19

BATHROOM & ENSUITES

- ⦿ Mirrored, recessed vanity unit with timber surround, integral light and shaver socket
- ⦿ Glass shower screen
- ⦿ Contemporary white sanitaryware
- ⦿ Chrome fixed head shower plus handheld spray attachment
- ⦿ Chrome thermostatic bath/shower mixer
- ⦿ WC with dual flush concealed cistern and soft close seat
- ⦿ Chrome heated towel rail with programmable timer



ELECTRICAL & HEATING

- ⦿ Wi-fi controlled intelligent electric panel heaters
- ⦿ Utility cupboard housing 145ltr hot water cylinder with plumbed space for washer/dryer below
- ⦿ LED downlighters to kitchen and bathroom
- ⦿ High level sockets and switches in brushed chrome
- ⦿ Dimmer switches to selected rooms
- ⦿ Mains powered smoke and heat detectors with battery backup
- ⦿ NICEIC/ECA certified
- ⦿ Pre-wired for high speed broadband including SKY, Virgin Media, BT and Hyperoptic (services may require subscription)



18

FIXTURES & FITTINGS

- ⦿ Kitchen, Lounge, Dining Area, Entrance and Store Cupboard featuring engineered wood effect flooring
- ⦿ Carpeted bedrooms
- ⦿ Horizon tiled bathroom
- ⦿ Walls finished in matt white emulsion
- ⦿ Timber work to flats and common areas finished in satin white
- ⦿ High quality aluminum double glazed windows
- ⦿ Internal white Portfolio doors
- ⦿ Internal front doors with double locking night latch and Euro deadlock
- ⦿ Wide Angle 200 Degree Door Viewer
- ⦿ Sliding, mirrored wardrobes
- ⦿ 999 year lease
- ⦿ 10 year building warranty



CONNECTIVITY

- ⦿ All apartments are pre-wired to accept SKY TV and digital services including Freeview and DAB radio (services may require subscription)
- ⦿ Pre-wired for high speed broadband (service may require subscription)
- ⦿ Deta media plate to lounge
- ⦿ Lounge pre-wired with data network cabling
- ⦿ USB charging points on selected power sockets

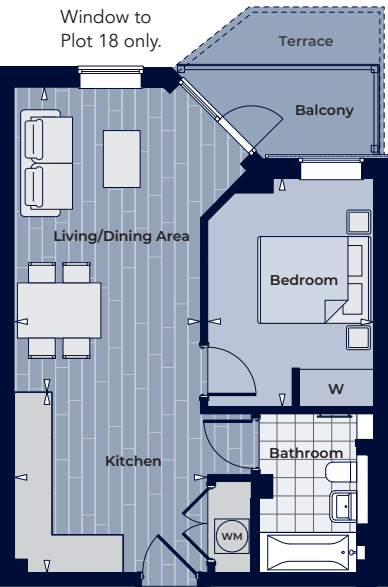


SECURITY & COMMUNAL FACILITIES

- ⦿ Video entry phone system to all apartments
- ⦿ Surface level car parking available
- ⦿ Key fob entry system to building entrance and car park
- ⦿ CCTV to common areas

PLOTS 1, 18†

KITCHEN	
3.37m x 3.13m	11'1" x 10'3"
LIVING/DINING AREA	
5.31m x 3.25m	17'5" x 10'8"
BEDROOM	
3.98m x 2.91m	13'0" x 9'6"



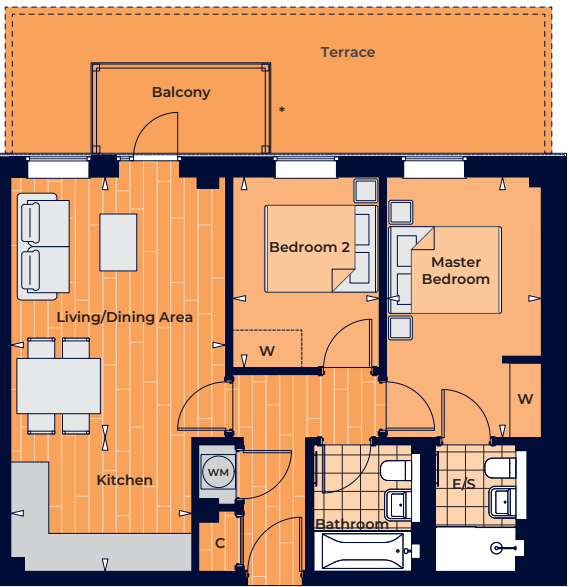
*Terrace to ground floor, balcony to first floor.
†Plot 18 has a larger bedroom.

PLOTS 8†, 9†, 10†, 11(H)†
25, 26, 27†, 28(H)†

KITCHEN	
5.06m x 4.75m	16'7" x 15'7"
LIVING/DINING AREA	
4.15m x 3.48m	13'7" x 11'5"
BEDROOM	
4.03m x 2.50m	13'2" x 8'2"



Terrace to ground floor, balcony to first floor.
†Plots have a larger kitchen and smaller living/dining area and/or master bedroom.



PLOTS 2, 19

KITCHEN	
3.17m x 2.30m	10'5" x 7'7"
LIVING/DINING AREA	
4.52m x 3.76m	14'10" x 12'4"
MASTER BEDROOM	
4.54m x 2.70m	14'11" x 8'10"
BEDROOM 2	
3.31m x 2.55m	10'10" x 8'4"

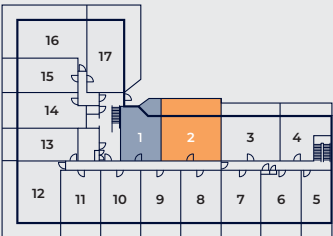
*Terrace to ground floor, balcony to first floor.



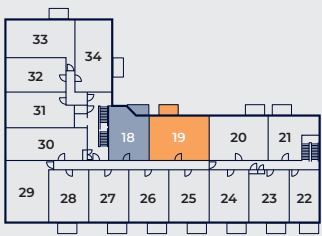
PLOTS 12, 29

KITCHEN/LIVING/DINING AREA	
7.34m x 4.29m	24'0" x 14'1"
MASTER BEDROOM	
6.57m x 2.75m	21'6" x 9'0"
BEDROOM 2	
3.28m x 2.40m	10'9" x 7'10"

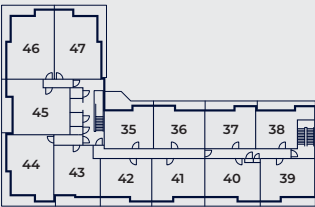
*Terrace to ground floor, Juliet balcony to first floor.



Ground Floor

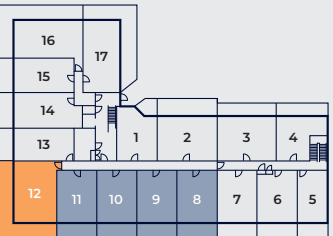


First Floor

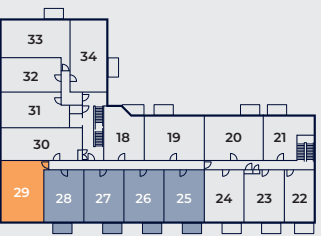


Second Floor

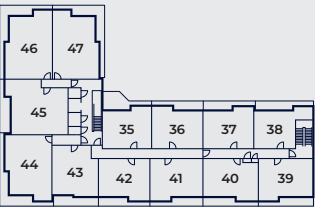
➦➦ Point from which maximum dimensions are measured. Dimensions are intended for guidance only and may vary by plus or minus 7.6cm/3".
The plots indicate general layout only which may vary slightly. Floor plan scale may vary from other plots.
W denotes wardrobe. W/M denotes washing machine. E/S denotes en-suite. C denotes cupboard. Please speak with a sales consultant for more information.



Ground Floor



First Floor



Second Floor

➦➦ Point from which maximum dimensions are measured. Dimensions are intended for guidance only and may vary by plus or minus 7.6cm/3".
The plots indicate general layout only which may vary slightly. Floor plan scale may vary from other plots.
W denotes wardrobe. W/M denotes washing machine. E/S denotes en-suite. Please speak with a sales consultant for more information.

PLOT 13

KITCHEN/LIVING/DINING AREA
9.46m x 2.38m 31'0" x 7'10"

BEDROOM
4.48m x 2.50m 14'8" x 8'2"



PLOTS 15, 32

KITCHEN/LIVING/DINING AREA
9.42m x 2.62m 30'11" x 8'6"

BEDROOM
4.58m x 2.46m 14'8" x 8'1"

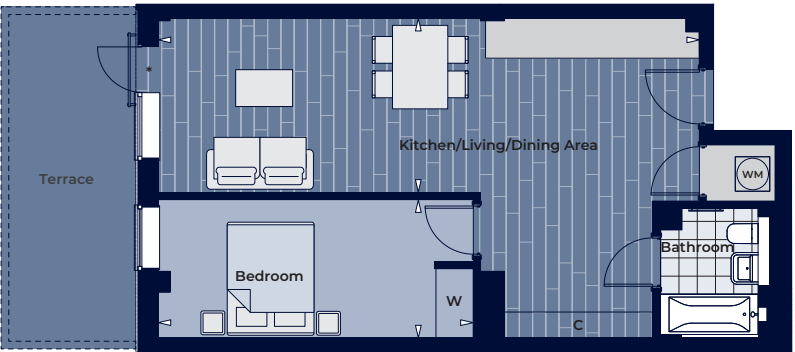


*Terrace to ground floor, Juliet balcony to first floor.

PLOTS 14, 31†

KITCHEN/LIVING/DINING AREA
9.42m x 2.93m 30'11" x 9'7"

BEDROOM
5.48m x 2.50m 17'12" x 8'2"



*Terrace to ground floor, Juliet balcony to first floor.
†Plot 31 has a larger bedroom.

PLOTS 16, 33

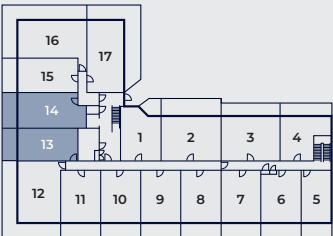
KITCHEN/LIVING/DINING AREA
5.89m x 4.88m 19'3" x 16'0"

MASTER BEDROOM
3.57m x 2.49m 11'9" x 8'2"

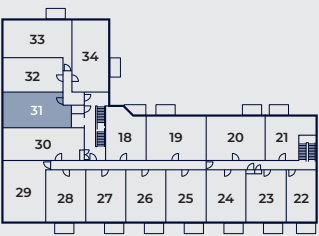
BEDROOM 2
3.26m x 2.61m 10'8" x 8'7"



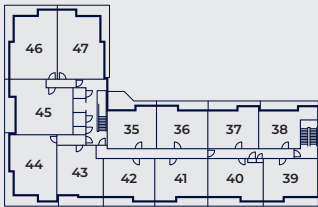
*Terrace to ground floor, balcony to first floor.



Ground Floor

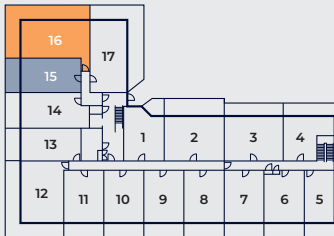


First Floor



Second Floor

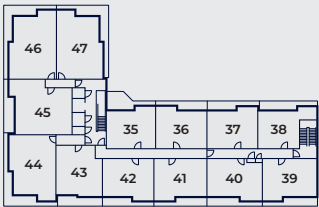
➤ Point from which maximum dimensions are measured. Dimensions are intended for guidance only and may vary by plus or minus 7.6cm/3".
The plots indicate general layout only which may vary slightly. Floor plan scale may vary from other plots.
W denotes wardrobe. W/M denotes washing machine. C denotes cupboard. Please speak with a sales consultant for more information.



Ground Floor



First Floor



Second Floor

➤ Point from which maximum dimensions are measured. Dimensions are intended for guidance only and may vary by plus or minus 7.6cm/3".
The plots indicate general layout only which may vary slightly. Floor plan scale may vary from other plots.
W denotes wardrobe. W/M denotes washing machine. E/S denotes en-suite. C denotes cupboard. Please speak with a sales consultant for more information.

PLOTS 17, 34

KITCHEN/LIVING/DINING AREA
5.68m x 5.13m 18'8" x 16'10"

MASTER BEDROOM
4.39m x 3.19m 14'5" x 10'6"

BEDROOM 2
4.46m x 2.87m 14'8" x 9'5"

*Terrace to ground floor, balcony to first floor.

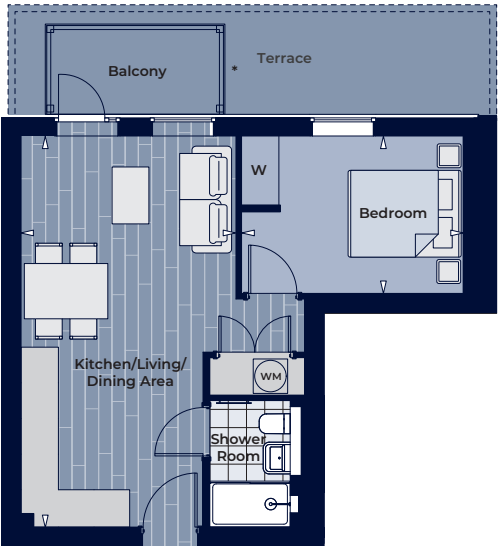


PLOTS 4, 21

KITCHEN/LIVING/DINING AREA
6.80m x 3.75m 22'4" x 12'4"

BEDROOM
3.86m x 2.74m 12'8" x 9'0"

*Terrace to ground floor, balcony to first floor.



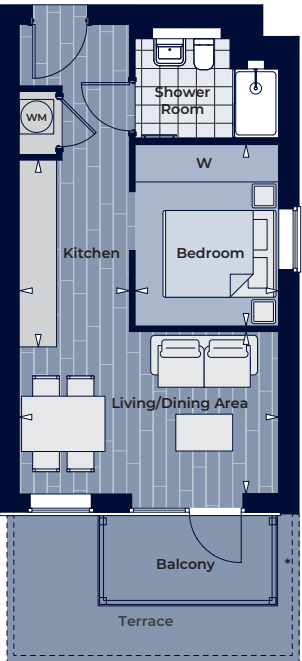
KITCHEN
3.14m x 2.37m 10'4" x 7'9"

LIVING/DINING AREA
4.44m x 3.79m 14'7" x 12'4"

MASTER BEDROOM
4.51m x 2.51m 14'10" x 8'3"

BEDROOM 2
3.27m x 2.38m 10'9" x 7'10"

*Terrace to ground floor, balcony to first floor.

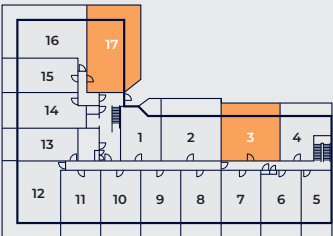


KITCHEN
3.25m x 1.92m 10'8" x 6'4"

LIVING/DINING AREA
4.52m x 2.83m 14'10" x 9'3"

BEDROOM
3.16m x 2.50m 10'5" x 8'2"

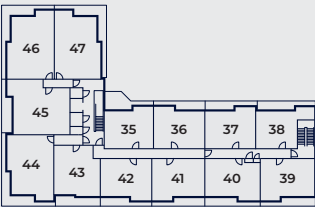
*Terrace to ground floor, balcony to first floor.



Ground Floor

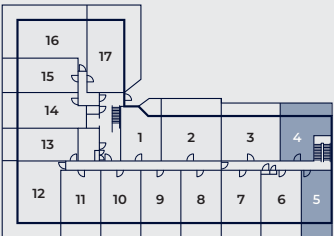


First Floor



Second Floor

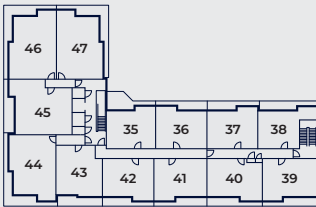
➦➤ Point from which maximum dimensions are measured. Dimensions are intended for guidance only and may vary by plus or minus 7.6cm/3".
The plots indicate general layout only which may vary slightly. Floor plan scale may vary from other plots.
W denotes wardrobe. W/M denotes washing machine. C denotes cupboard. Please speak with a sales consultant for more information.



Ground Floor



First Floor

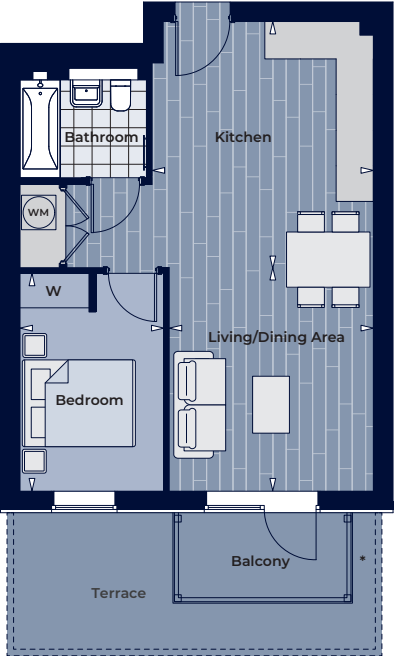


Second Floor

➦➤ Point from which maximum dimensions are measured. Dimensions are intended for guidance only and may vary by plus or minus 7.6cm/3".
The plots indicate general layout only which may vary slightly. Floor plan scale may vary from other plots.
W denotes wardrobe. W/M denotes washing machine. Please speak with a sales consultant for more information.

PLOTS 6, 23

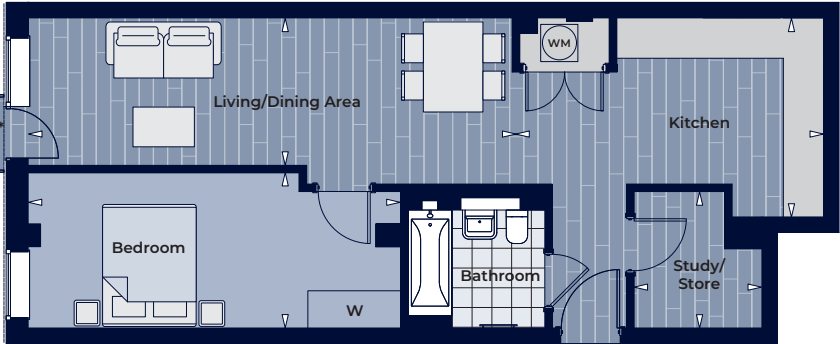
KITCHEN	
4.28m x 3.87m	14'0" x 12'8"
LIVING/DINING AREA	
3.87m x 3.55m	12'8" x 11'8"
BEDROOM	
3.79m x 2.51m	12'5" x 8'3"



*Terrace to ground floor, balcony to first floor.

PLOT 30

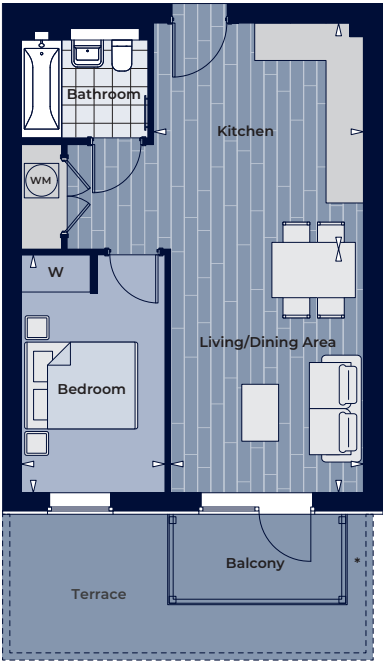
KITCHEN	
5.04m x 3.23m	16'6" x 10'7"
LIVING/DINING AREA	
7.81m x 2.38m	25'8" x 7'10"
BEDROOM	
6.01m x 2.50m	19'9" x 8'2"
STUDY/STORE	
2.20m x 2.06m	7'3" x 6'9"



*Juliet balcony.

PLOTS 7, 24

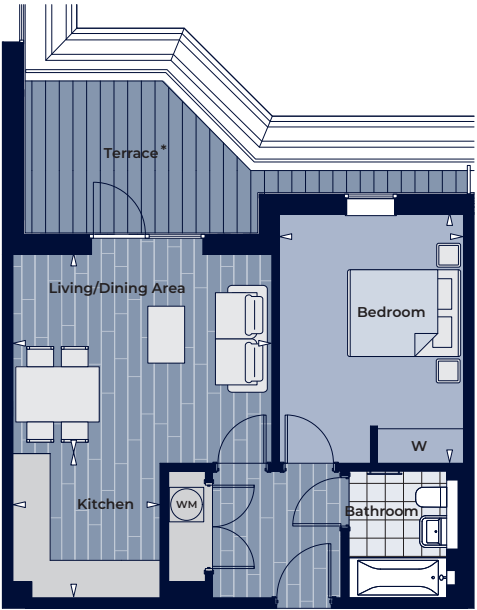
KITCHEN	
3.93m x 3.66m	12'11" x 12'0"
LIVING/DINING AREA	
4.24m x 3.36m	13'11" x 11'0"
BEDROOM	
4.14m x 2.51m	13'7" x 8'3"



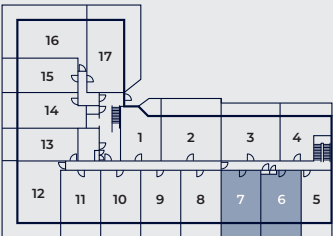
*Terrace to ground floor, balcony to first floor.

PLOTS 35, 36(H)

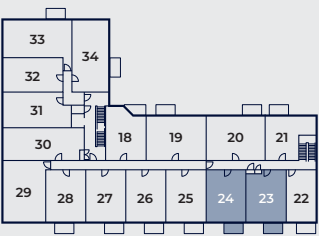
KITCHEN	
2.56m x 2.51m	8'5" x 8'3"
LIVING/DINING AREA	
4.51m x 3.63m	14'10" x 11'11"
BEDROOM	
4.51m x 3.46m	14'10" x 11'4"



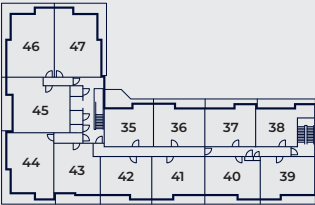
*Terrace differs to plot 36.



Ground Floor

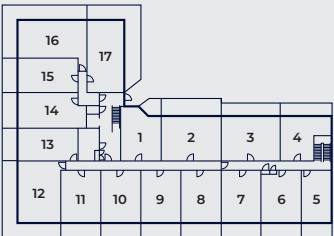


First Floor

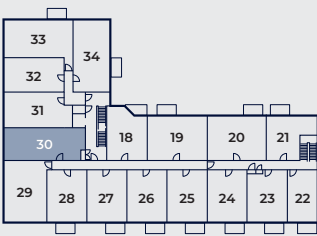


Second Floor

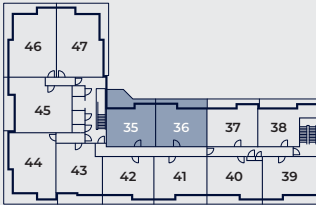
➦➦ Point from which maximum dimensions are measured. Dimensions are intended for guidance only and may vary by plus or minus 7.6cm/3".
The plots indicate general layout only which may vary slightly. Floor plan scale may vary from other plots.
W denotes wardrobe. W/M denotes washing machine. Please speak with a sales consultant for more information.



Ground Floor



First Floor

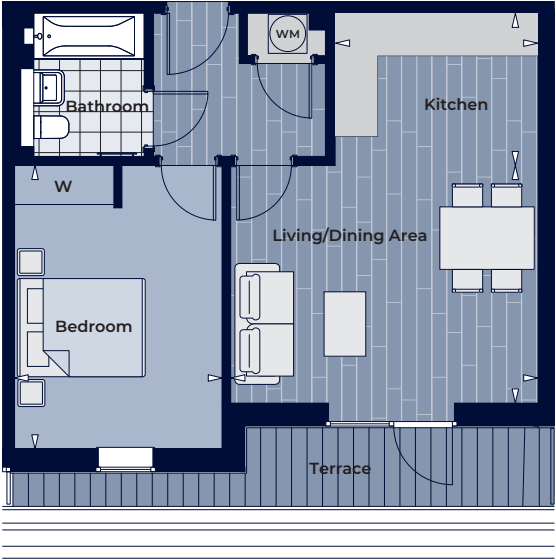


Second Floor

➦➦ Point from which maximum dimensions are measured. Dimensions are intended for guidance only and may vary by plus or minus 7.6cm/3".
The plots indicate general layout only which may vary slightly. Floor plan scale may vary from other plots.
W denotes wardrobe. W/M denotes washing machine. Please speak with a sales consultant for more information.

PLOTS 41, 42(H)[†]

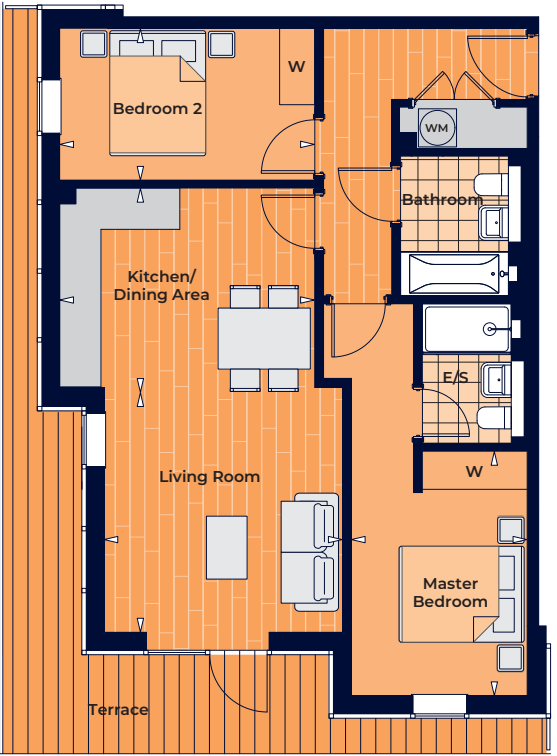
KITCHEN	
3.17m x 2.34m	10'5" x 7'8"
LIVING/DINING AREA	
4.77m x 3.65m	15'8" x 12'0"
BEDROOM	
4.35m x 3.19m	14'3" x 10'6"



[†]Plot 42 has a larger kitchen

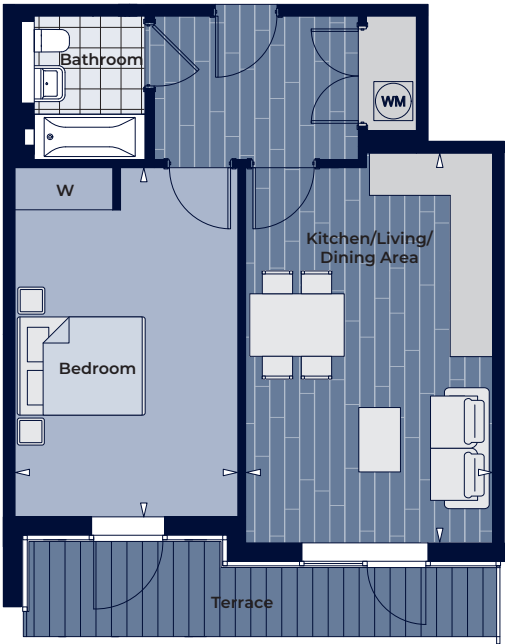
PLOT 44

KITCHEN/DINING AREA	
4.02m x 3.17m	13'2" x 10'5"
LIVING AREA	
3.84m x 3.75m	12'7" x 12'4"
MASTER BEDROOM	
3.85m x 2.77m	12'8" x 9'1"
BEDROOM 2	
4.01m x 2.41m	13'2" x 7'10"



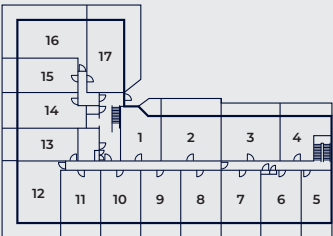
PLOT 43

KITCHEN/LIVING/DINING AREA	
5.99m x 3.80m	19'8" x 12'6"
BEDROOM	
5.37m x 3.42m	17'7" x 11'3"



PLOT 45

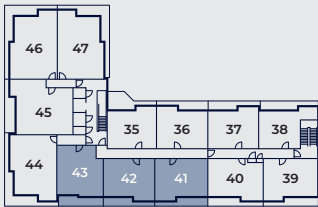
KITCHEN	
5.00m x 3.17m	16'5" x 10'5"
LIVING/DINING AREA	
5.68m x 3.15m	18'8" x 10'4"
MASTER BEDROOM	
3.77m x 2.79m	12'4" x 9'2"
BEDROOM 2	
4.39m x 2.55m	14'5" x 8'4"



Ground Floor

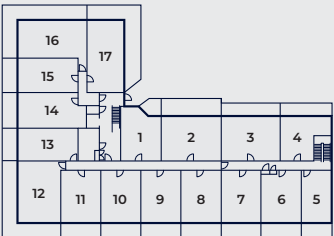


First Floor



Second Floor

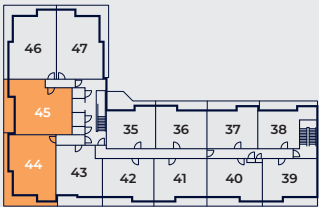
➤ Point from which maximum dimensions are measured. Dimensions are intended for guidance only and may vary by plus or minus 7.6cm/3".
The plots indicate general layout only which may vary slightly. Floor plan scale may vary from other plots.
W denotes wardrobe. W/M denotes washing machine. Please speak with a sales consultant for more information.



Ground Floor



First Floor

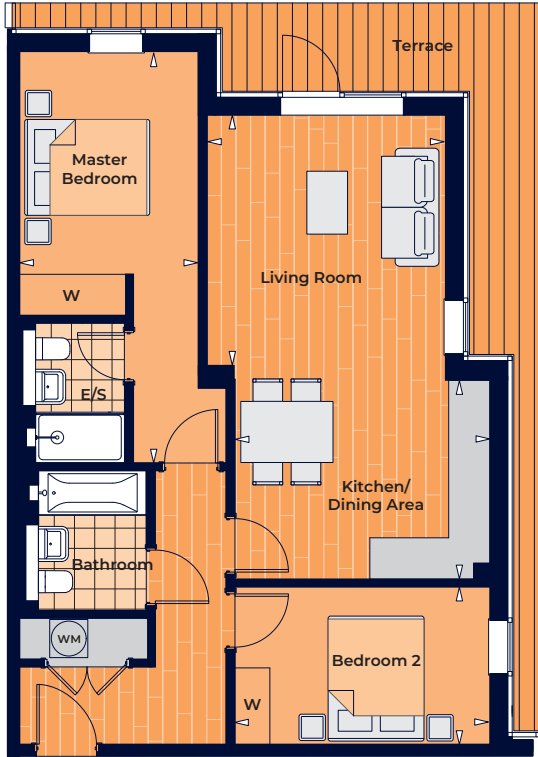


Second Floor

➤ Point from which maximum dimensions are measured. Dimensions are intended for guidance only and may vary by plus or minus 7.6cm/3".
The plots indicate general layout only which may vary slightly. Floor plan scale may vary from other plots.
W denotes wardrobe. W/M denotes washing machine. E/S denotes en-suite. Please speak with a sales consultant for more information.

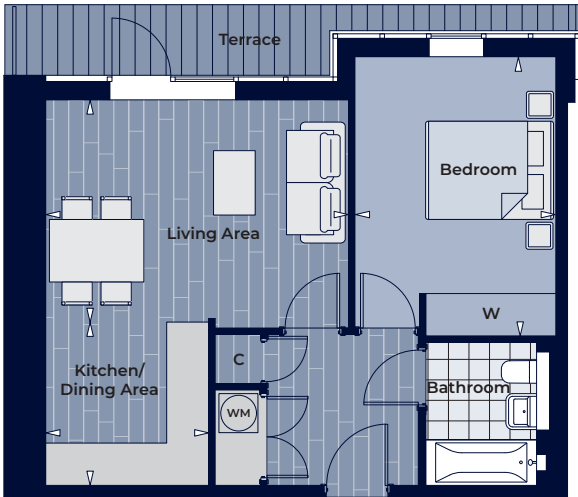
PLOTS 46(H), 47

KITCHEN/DINING AREA		
4.01m x 3.16m	13'2" x 10'4"	
LIVING AREA		
3.75m x 3.94m	12'4" x 12'11"	
MASTER BEDROOM		
6.47m x 2.81m	21'3" x 9'3"	
BEDROOM 2		
4.01m x 2.48m	13'2" x 8'2"	



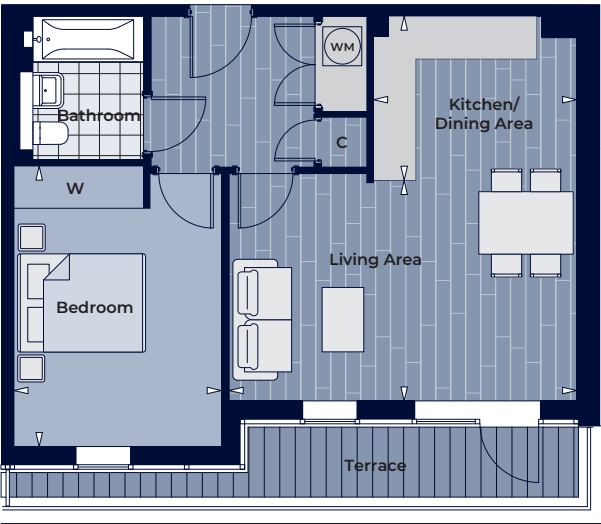
PLOT 38

KITCHEN LIVING/DINING AREA		
5.89m x 3.36m	19'4" x 11'0"	
BEDROOM		
4.59m x 2.98m	15'0" x 9'9"	



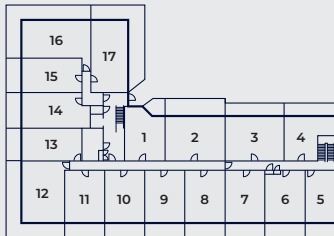
PLOT 37

KITCHEN/DINING AREA		
2.51m x 2.57m	8'3" x 8'5"	
LIVING AREA		
4.66m x 3.36m	15'4" x 11'3"	
BEDROOM		
4.29m x 3.07m	14'1" x 10'1"	

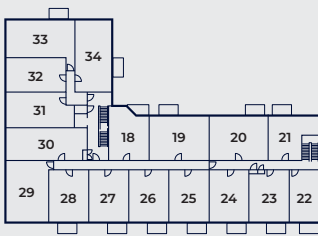


PLOT 39

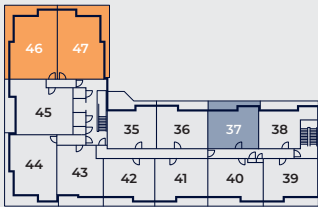
KITCHEN/DINING AREA		
3.13m x 2.55m	10'3" x 8'5"	
LIVING AREA		
5.35m x 3.45m	17'6" x 11'4"	
BEDROOM		
4.31m x 3.20m	14'2" x 10'6"	



Ground Floor

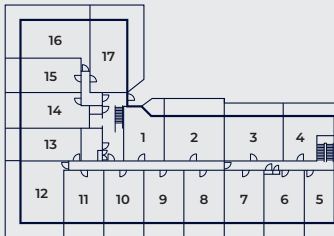


First Floor

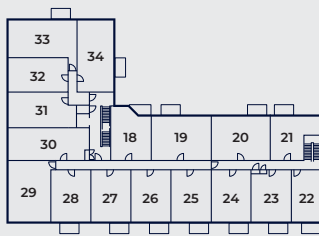


Second Floor

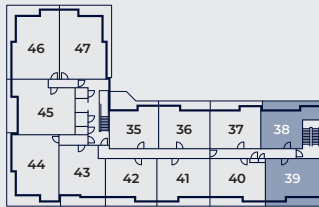
Point from which maximum dimensions are measured. Dimensions are intended for guidance only and may vary by plus or minus 7.6cm/3".
The plots indicate general layout only which may vary slightly. Floor plan scale may vary from other plots.
W denotes wardrobe. W/M denotes washing machine. E/S denotes en-suite. Please speak with a sales consultant for more information.



Ground Floor



First Floor



Second Floor

Point from which maximum dimensions are measured. Dimensions are intended for guidance only and may vary by plus or minus 7.6cm/3".
The plots indicate general layout only which may vary slightly. Floor plan scale may vary from other plots.
W denotes wardrobe. W/M denotes washing machine. E/S denotes en-suite. C denotes cupboard. Please speak with a sales consultant for more information.



PLOT 40

KITCHEN/DINING AREA

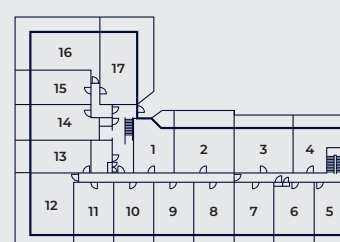
3.13m x 2.43m 10'3" x 8'0"

LIVING AREA

5.15m x 3.54m 16'11" x 11'7"

BEDROOM

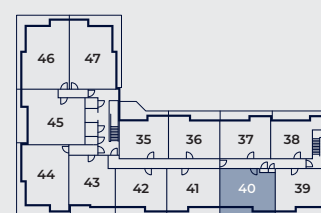
3.24m x 4.19m 10'7" x 13'9"



Ground Floor



First Floor



Second Floor

➤ Point from which maximum dimensions are measured. Dimensions are intended for guidance only and may vary by plus or minus 7.6cm/3".
The plots indicate general layout only which may vary slightly. Floor plan scale may vary from other plots.
W denotes wardrobe. W/M denotes washing machine. C denotes cupboard. Please speak with a sales consultant for more information.

WHY CHOOSE A MONTREAUX HOME?

Montreaux is a privately owned UK company specialising in designing and developing contemporary, high-quality properties in prime locations.

Our developments are distinguished by impeccable attention to detail, modern design and cutting-edge technology that consistently produces properties of an excellent standard. The concept behind each project we undertake is to provide a classic architectural approach combined with the latest interior trends. This creates a stunning space, effortlessly blending much desired practicality with style.

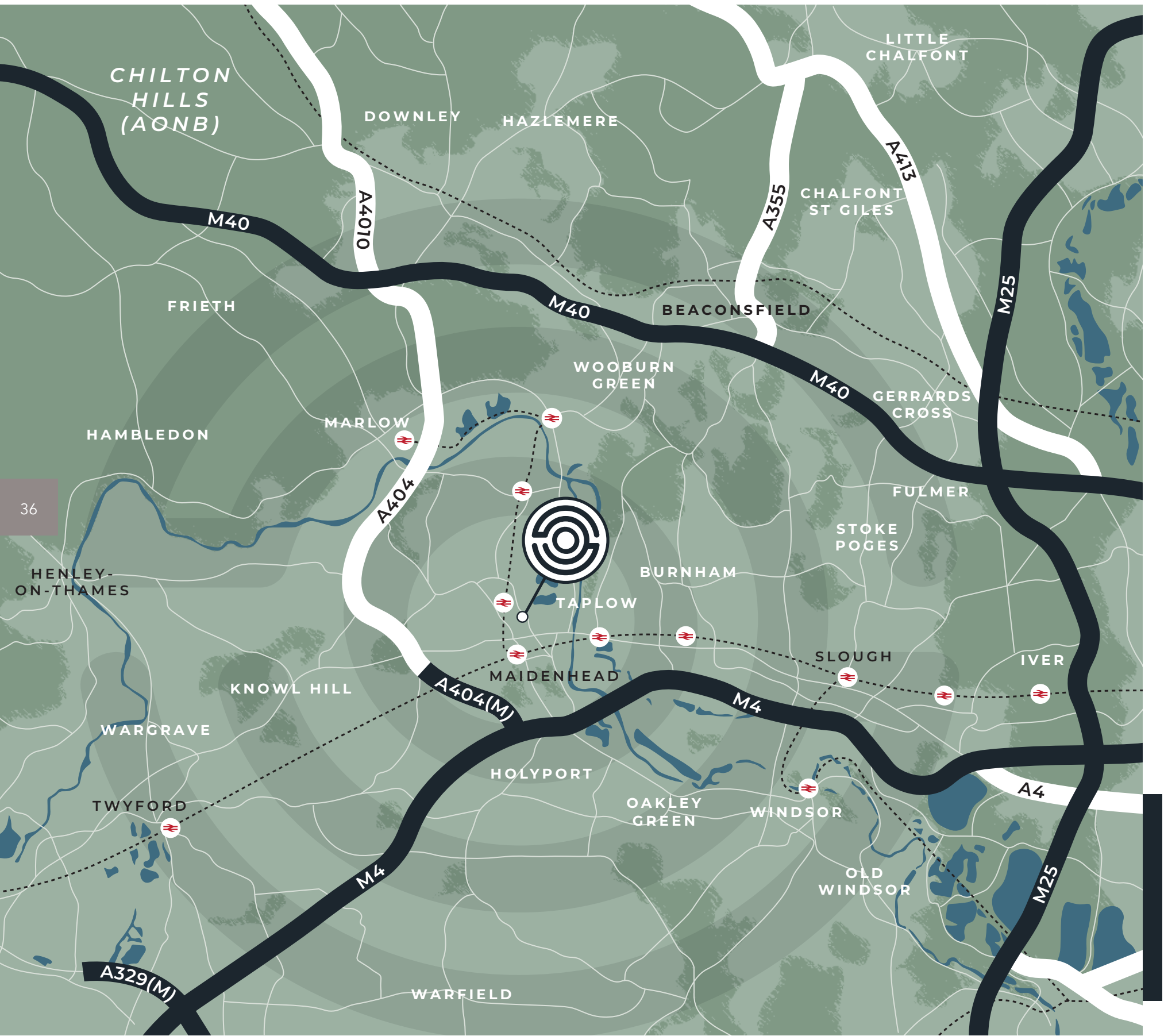
Montreaux undertake all stages of a development project, from initial concepts through to the completed build.

Our in-house experts design everything down to the finest detail and carefully manage the build process from start to finish, with a dedication to deliver high quality, aspirational properties that people are proud to call home.

Our commitment to excellence continues long after you have completed your purchase and moved in to your new home.

A ten-year new build warranty and a two-year defects repair policy is provided as standard on all our properties and a 24-hour aftercare team is on hand to give you peace of mind, providing prompt and helpful assistance whenever you need it.





Montreaux Homes creates high quality and aspirational places that people are proud to call home.

CONTACT US

Telephone: 03333 700 300
Email: Sales@montreaux.co.uk

Montreaux Homes Ltd
Montreaux House
The Hythe
Staines Upon Thames
TW18 3JQ

WWW.ODYSSEYPLACE.CO.UK

Computer generated imagery is included for guidance only. The properties may vary in terms of elevational design and details. Kitchens and bathroom layouts may vary from those shown as we operate on a process of continuous product development, therefore prospective purchasers should check the latest plans and specification with our Sales Office. Maps are not drawn to scale. Travel times quoted are approximate only. Photography used is of the local area or indicative lifestyle images. Designed and produced by ThinkBDW September 2020.



MONTREAU
X
HOMES

WWW.MONTREAUXHOMES.CO.UK