

Bowdown House

One and two bedroom homes

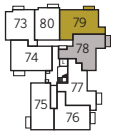
Apartments 49-80



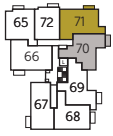
Bellway Homes Limited (Thames Valley Division)
Pacific House, Imperial Way, Reading
Berkshire RG2 0TD

Telephone: 0118 933 8020
Fax: 0118 931 3929
www.bellway.co.uk

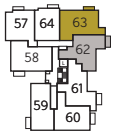
Bellway



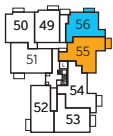
Third Floor



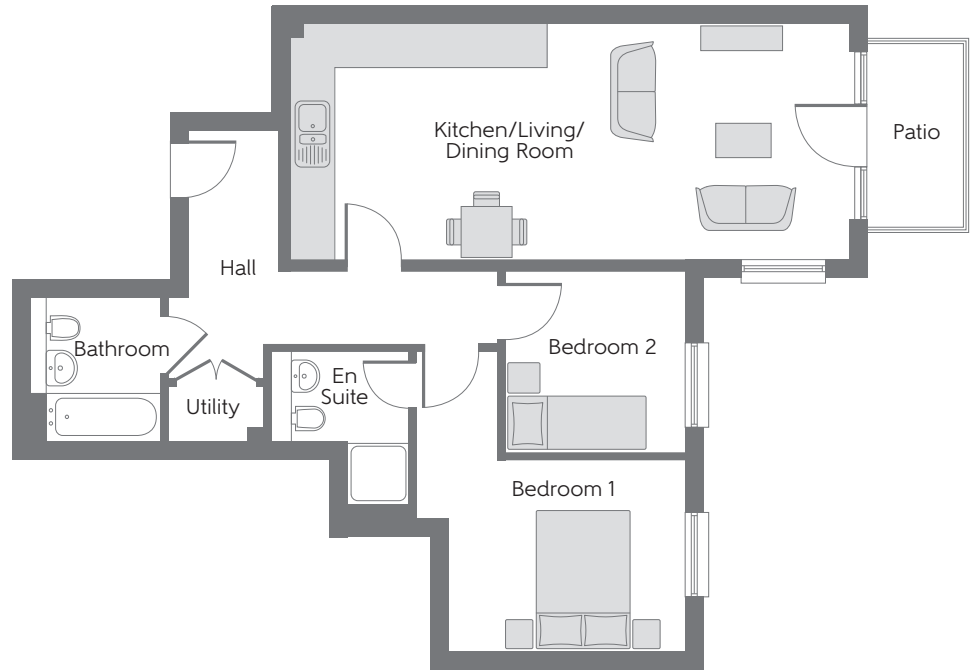
Second Floor



First Floor

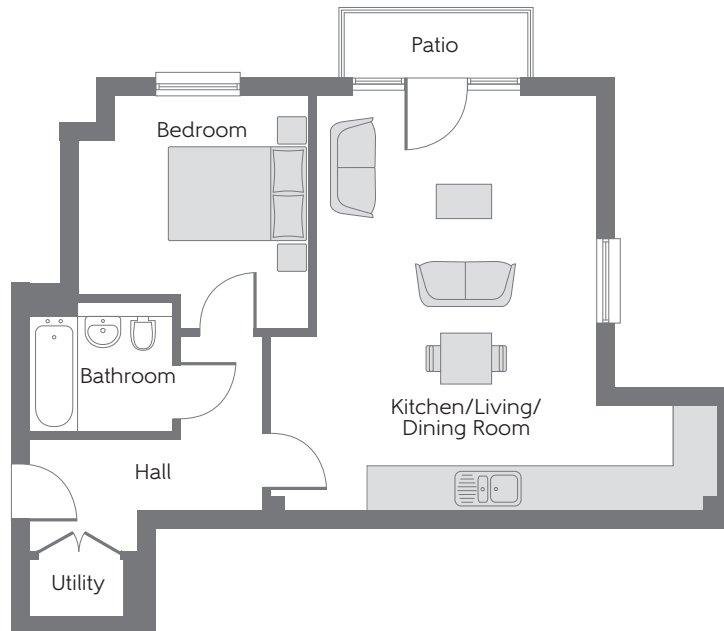


Ground Floor



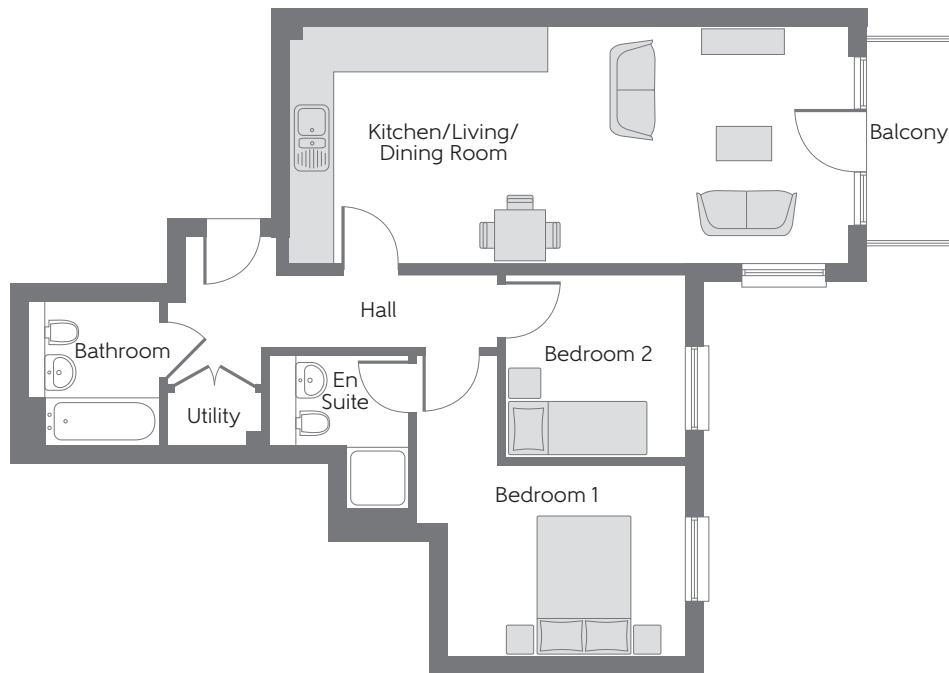
**The Rutile
Apartment 55**

Kitchen/Living/ Dining Room	8.192m x 3.454m	26'11" x 11'4"
Bedroom 1	4.409m x 3.978m	14'6" x 13'1"
Bedroom 2	2.664m x 2.650m	8'9" x 8'8"



**The Moonstone
Apartment 56**

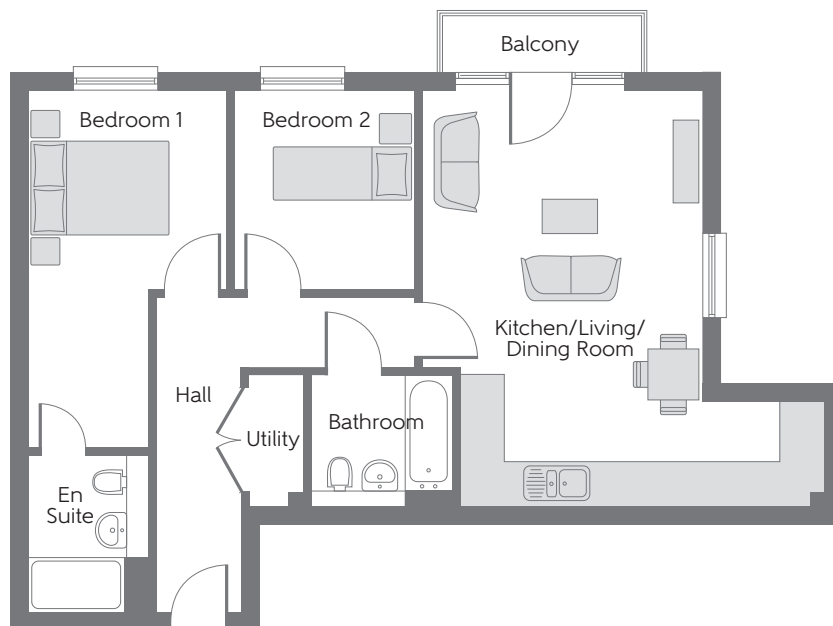
Kitchen/Living/ Dining Room	6.570m x 6.079m	21'7" x 19'11"
Bedroom	3.437m x 3.402m	11'3" x 11'2"



The Andesine

Apartments 62, 70 & 78

Kitchen/Living/ Dining Room	8.192m x 3.496m	26'11" x 11'6"
Bedroom 1	4.445m x 3.937m	14'7" x 12'11"
Bedroom 2	2.654m x 2.646m	8'9" x 8'8"

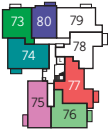


The Jet

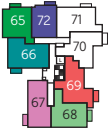
Apartments 63, 71 & 79

Kitchen/Living/ Dining Room	6.104m x 5.335m	20'0" x 17'6"
Bedroom 1	5.239m x 2.901m	17'2" x 9'6"
Bedroom 2	2.928m x 2.675m	9'7" x 8'9"

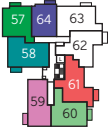
Some items shown in this key may be subject to change, and positions could vary from those indicated on this floorplan. Please refer to Sales Advisor for details of your selected plot. Computer generated image shown overleaf. External finishes and landscaping may vary from plot to plot. Please refer to Sales Advisor for further details. All dimensions are approximate and should not be used for carpet sizes, appliance spaces, or furniture. Furniture not to scale and all positions are indicative. We operate a policy of continuous improvement and individual features such as kitchen and bathroom layouts, doors, windows, garages and elevational treatments may vary from time to time. Consequently these particulars should be treated as general guidance only and do not constitute a contract, part of a contract or a warranty. L Lift. 01862-03/01/22.



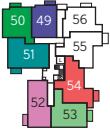
Third Floor



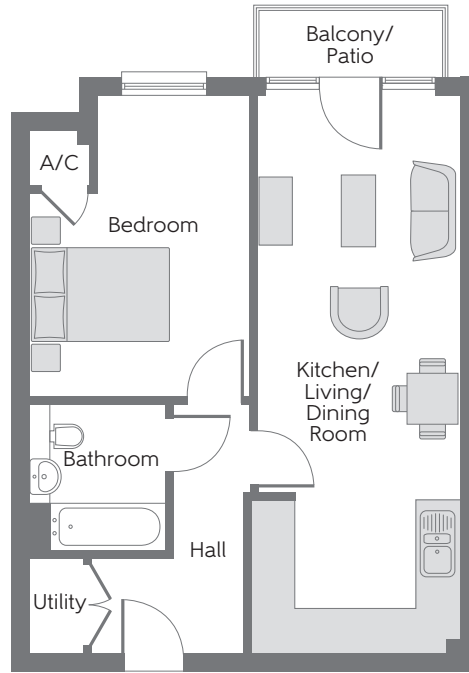
Second Floor



First Floor



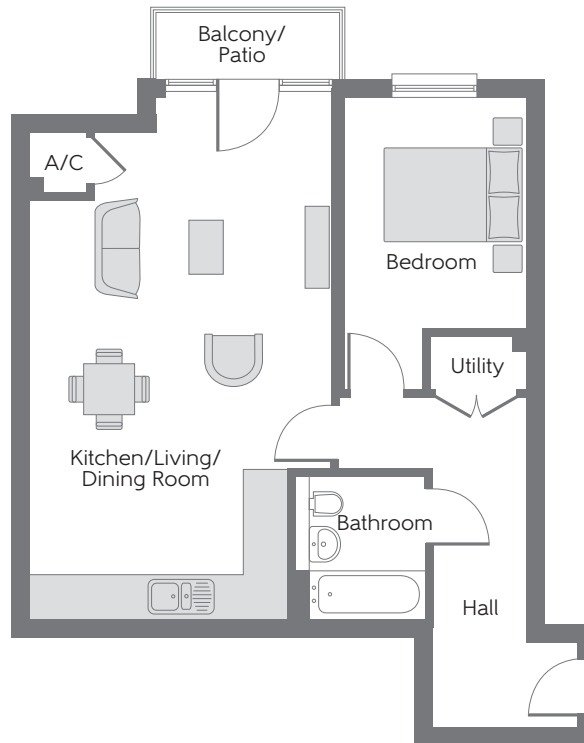
Ground Floor



The Obsidian

Apartments 49, 64, 72 & 80

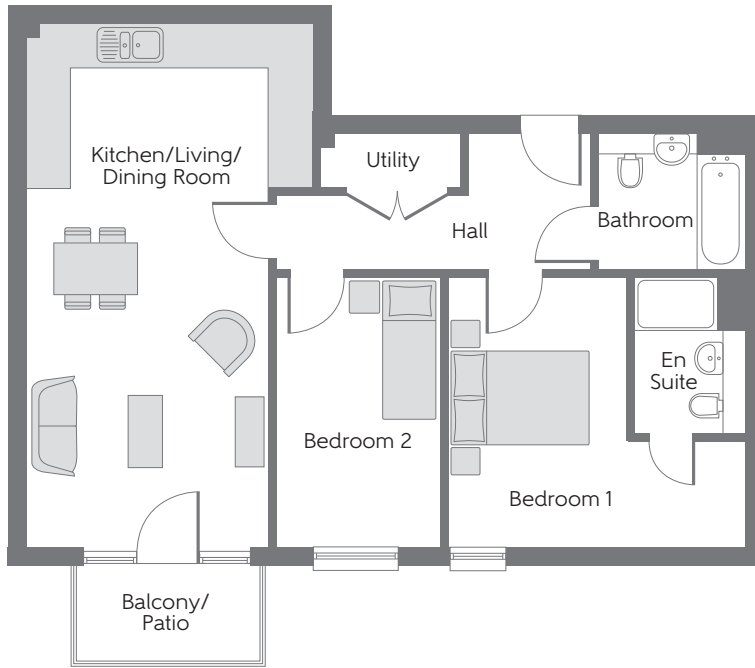
Kitchen/Living/ Dining Room	8.158m x 2.963m	26'9" x 9'9"
Bedroom	4.425m x 3.249m	14'6" x 10'8"



The Zircon

Apartments 50, 57, 65 & 73

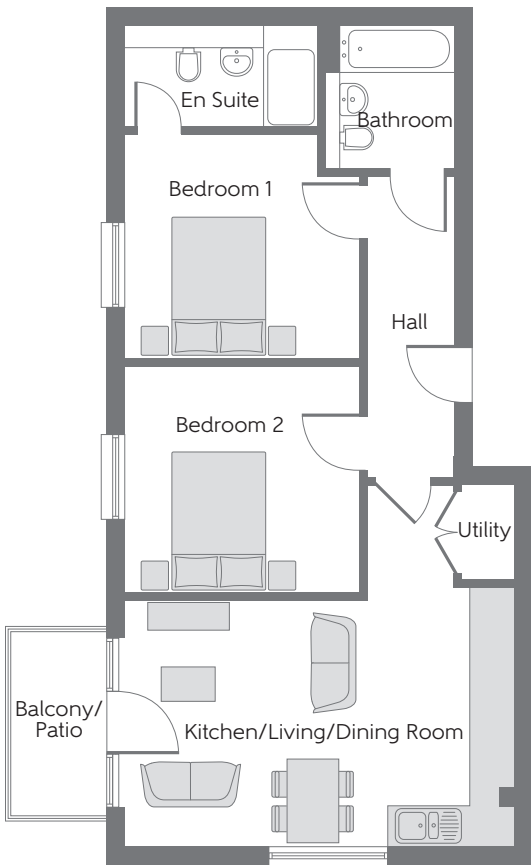
Kitchen/Living/ Dining Room	7.634m x 4.392m	25'1" x 14'5"
Bedroom	4.337m x 2.667m	14'3" x 8'9"



The Turquoise

Apartments 51, 58, 66 & 74

Kitchen/Living/ Dining Room	7.651m x 4.223m	25'1" x 13'10"
Bedroom 1	4.390m x 3.968m	14'5" x 13'0"
Bedroom 2	3.980m x 2.424m	13'1" x 7'11"



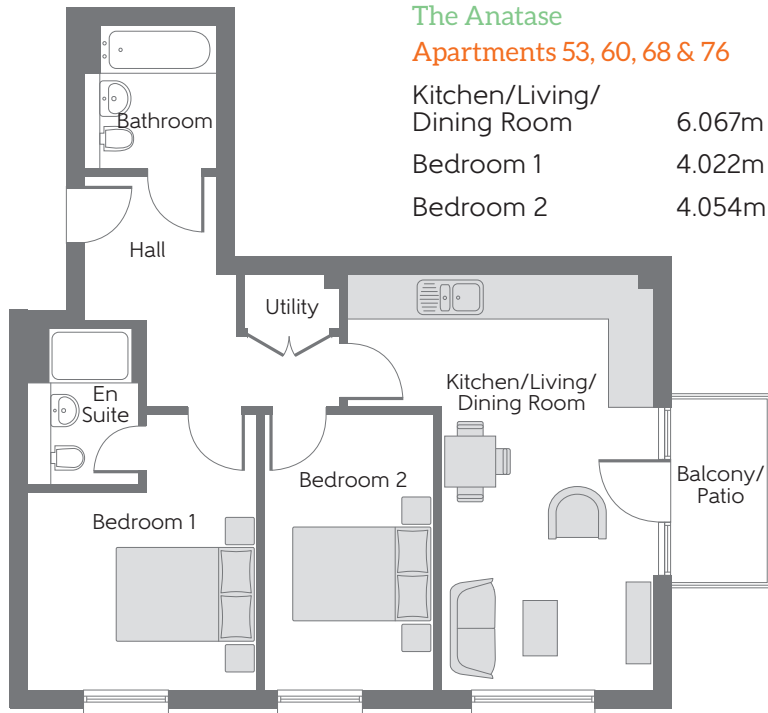
The Onyx

Apartments 52, 59, 67 & 75

Kitchen/Living/ Dining Room	5.707m x 5.278m	18'9" x 17'4"
Bedroom 1	3.445m x 3.319m	11'4" x 10'11"
Bedroom 2	3.420m x 3.333m	11'3" x 10'11"

The Anatase

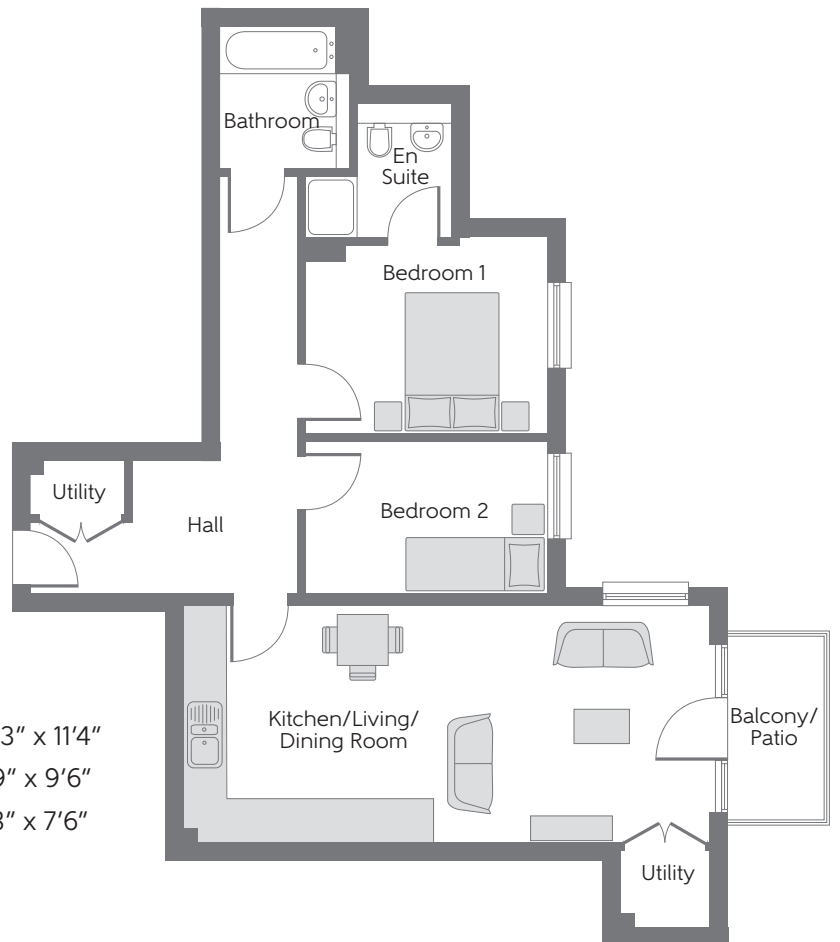
Apartments 53, 60, 68 & 76



Kitchen/Living/ Dining Room	6.067m x 4.522m	19'11" x 14'10"
Bedroom 1	4.022m x 3.386m	13'2" x 11'1"
Bedroom 2	4.054m x 2.525m	13'4" x 8'3"

The Proteus

Apartments 54, 61, 69 & 77



Kitchen/Living/ Dining Room	7.694m x 3.450m	25'3" x 11'4"
Bedroom 1	3.590m x 2.900m	11'9" x 9'6"
Bedroom 2	3.546m x 2.278m	11'8" x 7'6"

Some items shown in this key may be subject to change, and positions could vary from those indicated on this floorplan. Please refer to Sales Advisor for details of your selected plot. Computer generated image shown overleaf. External finishes and landscaping may vary from plot to plot. Please refer to Sales Advisor for further details. All dimensions are approximate and should not be used for carpet sizes, appliance spaces, or furniture. Furniture not to scale and all positions are indicative. We operate a policy of continuous improvement and individual features such as kitchen and bathroom layouts, doors, windows, garages and elevational treatments may vary from time to time. Consequently these particulars should be treated as general guidance only and do not constitute a contract, part of a contract or a warranty. L Lift