



**105 Blenheim Road, Maidenhead SL6 5HN**

**welcome to**

**105 Blenheim Road, Maidenhead**

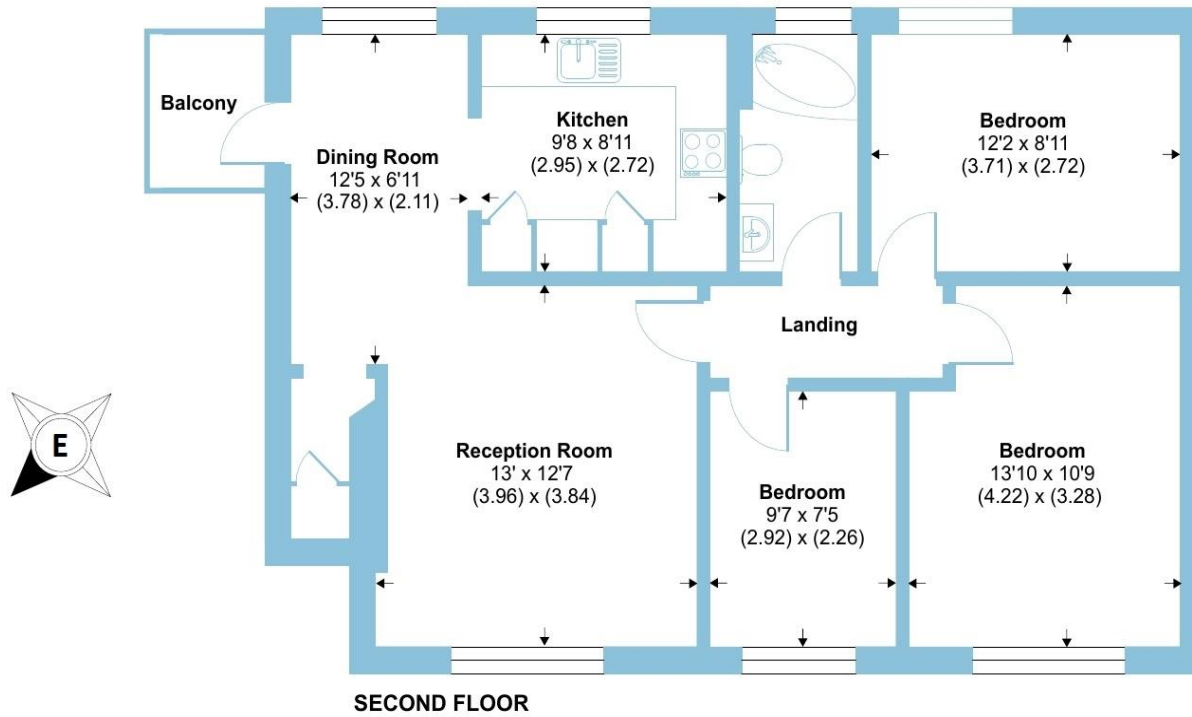
Situated opposite Oaken Grove Park is this spacious three bedroom second floor apartment. Well presented throughout with exceptional storage space and glorious views stretching across beautiful parkland. With a balcony and parking area for residents, this property is a must for viewing.



# Blenheim Road, Maidenhead, SL6

Approximate Area = 795 sq ft / 73.8 sq m

For identification only - Not to scale



Floor plan produced in accordance with RICS Property Measurement Standards incorporating International Property Measurement Standards (IPMS2 Residential). © nichecom 2024. Produced for Barnard Marcus. REF: 1169979



welcome to

## 105 Blenheim Road, Maidenhead

- VIEWS OVER OAKEN GROVE PARK
- WELL PRESENTED THROUGHOUT
- EXCEPTIONAL STORAGE SPACE
- THREE BEDROOMS
- BALCONY
- RESIDENTS PARKING AREA
- PROPERTY CAN BE SOLD WITHOUT A CHAIN IF SOLD AT CORRECT PRICE

Tenure: Leasehold EPC Rating: Awaiting

This is a Leasehold property with details as follows; Term of Lease 99 years from 04 Jul 2018. Should you require further information please contact the branch. Please Note additional fees could be incurred for items such as Leasehold packs.

**£300,000**



Please note the marker reflects the postcode not the actual property

check out more properties at [rogerplatt.co.uk](https://rogerplatt.co.uk)



Property Ref:  
MHD121595 - 0002

1. MONEY LAUNDERING REGULATIONS Intending purchasers will be asked to produce identification documentation at a later stage and we would ask for your co-operation in order that there is no delay in agreeing the sale. 2. These particulars do not constitute part or all of an offer or contract. 3. The measurements indicated are supplied for guidance only and as such must be considered incorrect. Potential buyers are advised to recheck measurements before committing to any expense. 4. We have not tested any apparatus, equipment, fixtures or services and it is in the buyers interest to check the working condition of any appliances. 5. Where an EPC, or a Home Report (Scotland only) is held for this property, it is available for inspection at the branch by appointment. If you require a printed version of a Home Report, you will need to pay a reasonable production charge reflecting printing and other costs. 6. We are not able to offer an opinion either written or verbal on the content of these reports and this must be obtained from your legal representative. 7. Whilst we take care in preparing these reports, a buyer should ensure that his/her legal representative confirms as soon as possible all matters relating to title including the extent and boundaries of the property and other important matters before exchange of contracts.

Roger Platt is a trading name of Sequence (UK) Limited which is registered in England and Wales under company number 4268443, Registered Office is Cumbria House, 16-20 Hockliffe Street, Leighton Buzzard, Bedfordshire, LU7 1GN. VAT Registration Number is 500 2481 05.

roger platt



**01628 773333**



Maidenhead@rogerplatt.co.uk



25-29 Queen Street, MAIDENHEAD, Berkshire,  
SL6 1NB



**rogerplatt.co.uk**