



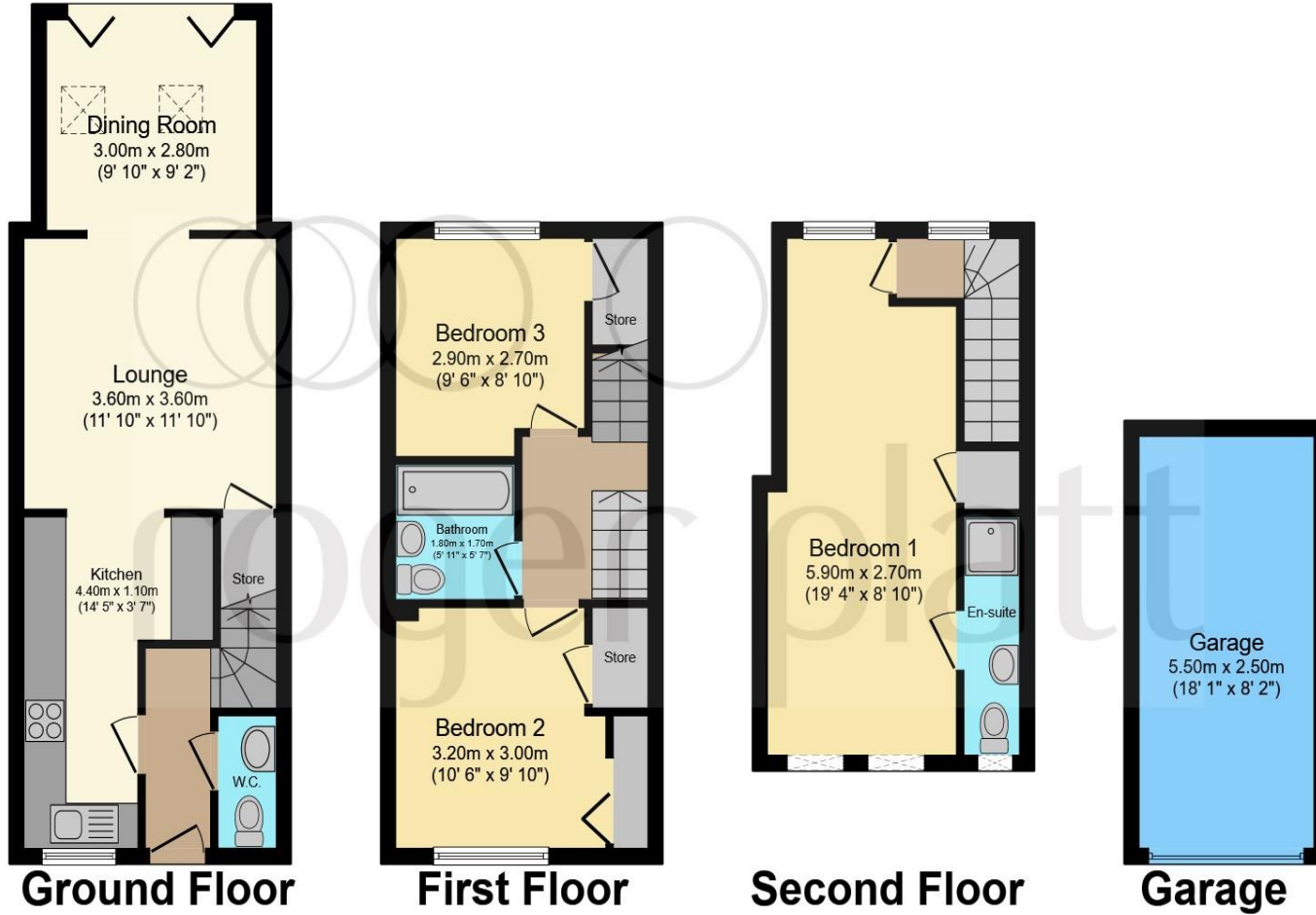
Copse Close, Slough SL1 5DT

welcome to

Copse Close, Slough

In show home condition is this superb three bedroom with en suite to master family home with accommodation over three floors and location close to excellent transport links with M4 junction 6 and Burnham Station both within easy reach and sought after schools and amenities on your doorstep.





Total floor area 104.5 m² (1,124 sq.ft.) approx

This floor plan is for illustrative purposes only. It is not drawn to scale. Any measurements, floor areas (including any total floor area), openings and orientation are approximate. No details are guaranteed, they cannot be relied upon for any purpose and they do not form part of any agreement. No liability is taken for any error, omission or misstatement. A party must rely upon its own inspection(s). Powered by www.focalagent.com

welcome to

Copse Close, Slough

- STUNNING FAMILY THREE BEDROOM HOME
- LARGE MASTER BEDROOM WITH EN SUITE
- OPEN PLAN LIVING
- GARAGE AND PARKING
- CLOSE TO BURNHAM STATION

Tenure: Freehold EPC Rating: C

offers in excess of

£475,000



Please note the marker reflects the postcode not the actual property

view this property online rogerplatt.co.uk/Property/BRH107074



Property Ref:
BRH107074 - 0004

1. MONEY LAUNDERING REGULATIONS Intending purchasers will be asked to produce identification documentation at a later stage and we would ask for your co-operation in order that there is no delay in agreeing the sale. 2. These particulars do not constitute part or all of an offer or contract. 3. The measurements indicated are supplied for guidance only and as such must be considered incorrect. Potential buyers are advised to recheck measurements before committing to any expense. 4. We have not tested any apparatus, equipment, fixtures or services and it is in the buyers interest to check the working condition of any appliances. 5. Where an EPC, or a Home Report (Scotland only) is held for this property, it is available for inspection at the branch by appointment. If you require a printed version of a Home Report, you will need to pay a reasonable production charge reflecting printing and other costs. 6. We are not able to offer an opinion either written or verbal on the content of these reports and this must be obtained from your legal representative. 7. Whilst we take care in preparing these reports, a buyer should ensure that his/her legal representative confirms as soon as possible all matters relating to title including the extent and boundaries of the property and other important matters before exchange of contracts.

Roger Platt is a trading name of Sequence (UK) Limited which is registered in England and Wales under company number 4268443, Registered Office is Cumbria House, 16-20 Hockliffe Street, Leighton Buzzard, Bedfordshire, LU7 1GN. VAT Registration Number is 500 2481 05.


roger platt



01628 665252



Burnham@rogerplatt.co.uk



105 High Street, Burnham, BURNHAM,
Buckinghamshire, SL1 7JZ



rogerplatt.co.uk