



**Plough Crescent, Stockton-On-Tees TS19 8GZ**

**welcome to**

## **Plough Crescent, Stockton-On-Tees**

A modern four bedroom detached family home situated on the Summerville Quarter estate, Stockton-On-Tees.

### **Study**

6' 6" x 6' 7" ( 1.98m x 2.01m )

Radiator, window to front

### **Downstairs Wc**

Window to side, low level WC, wash hand basin, radiator

### **Lounge**

16' x 9' 9" max ( 4.88m x 2.97m max )

Window to front, two radiators

### **Kitchen**

21' 4" x 13' 2" max ( 6.50m x 4.01m max )

Fridge freezer, sink, range of wall and base units, electric hob, extractor fan, oven, microwave, UPVC door to rear, splash back, spotlights, two radiators, under stairs cupboard

### **Utility Room**

4' 4" x 5' 1" ( 1.32m x 1.55m )

Boiler. range of wall and base units, radiator

### **Bedroom 1**

11' 5" x 10' 8" ( 3.48m x 3.25m )

Window to front, radiator

### **En Suite**

Towel rail, low level WC, wash hand basin, shower, spotlights, splash back

### **Bedroom 2**

12' 5" x 9' 6" ( 3.78m x 2.90m )

Window to rear, radiator

### **Bedroom 3**

9' 9" max x 11' 4" max ( 2.97m max x 3.45m max )

Window to rear, radiator

### **Bedroom 4**

13' 8" x 8' 2" ( 4.17m x 2.49m )

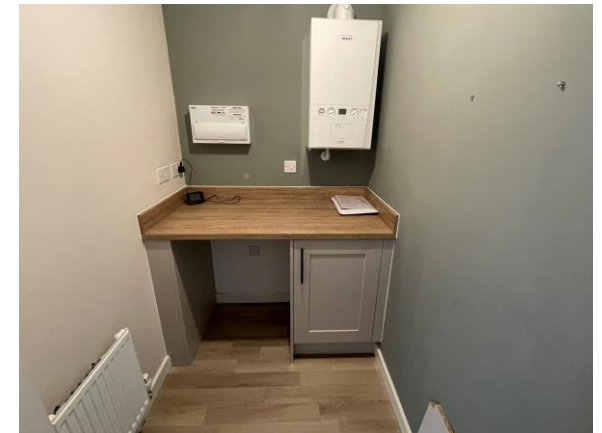
Window to front, radiator

### **Bathroom**

Low level WC, wash hand basin, splash back, bath with shower unit, window to side, towel rail

### **Rear Garden**

Laid to lawn, patio





***view this property online*** [mannersandharrison.co.uk/Property/STO115032](https://mannersandharrison.co.uk/Property/STO115032)



**welcome to**

## **Plough Crescent, Stockton-On-Tees**

- FRONT AND REAR GARDENS
- OFF-STREET PARKING
- GARAGE
- MASTER BEDROOM WITH EN SUITE
- DETACHED

Tenure: Freehold EPC Rating: B  
Council Tax Band: D

**£269,995**



**view this property online** [mannersandharrison.co.uk/Property/STO115032](https://mannersandharrison.co.uk/Property/STO115032)



Property Ref:  
STO115032 - 0002

1. MONEY LAUNDERING REGULATIONS Intending purchasers will be asked to produce identification documentation at a later stage and we would ask for your co-operation in order that there is no delay in agreeing the sale. 2. These particulars do not constitute part or all of an offer or contract. 3. The measurements indicated are supplied for guidance only and as such must be considered incorrect. Potential buyers are advised to recheck measurements before committing to any expense. 4. We have not tested any apparatus, equipment, fixtures or services and it is in the buyers interest to check the working condition of any appliances. 5. Where an EPC, or a Home Report (Scotland only) is held for this property, it is available for inspection at the branch by appointment. If you require a printed version of a Home Report, you will need to pay a reasonable production charge reflecting printing and other costs. 6. We are not able to offer an opinion either written or verbal on the content of these reports and this must be obtained from your legal representative. 7. Whilst we take care in preparing these reports, a buyer should ensure that his/her legal representative confirms as soon as possible all matters relating to title including the extent and boundaries of the property and other important matters before exchange of contracts.

Manners & Harrison is a trading name of Sequence (UK) Limited which is registered in England and Wales under company number 4268443, Registered Office is Cumbria House, 16-20 Hockliffe Street, Leighton Buzzard, Bedfordshire, LU7 1GN. VAT Registration Number is 500 2481 05.



**manners & harrison**



**01642 606161**



[Stockton@mannersandharrison.co.uk](mailto:Stockton@mannersandharrison.co.uk)



23 High Street, STOCKTON-ON-TEES,  
Cleveland, TS18 1SP



[mannersandharrison.co.uk](https://mannersandharrison.co.uk)