



Beech Oval, Sedgefield STOCKTON-ON-TEES TS21 3DL

welcome to

Beech Oval, Sedgefield STOCKTON-ON-TEES

Three bedroom semi-detached family home situated in the much sought after area of Sedgefield.

Entrance Hall

UPVC door to front, radiator, stairs to first floor

16' 8" x 9' 6" (5.08m x 2.90m)

Velux windows to front

Lounge

11' 9" x 14' 9" (3.58m x 4.50m)

Window to front, radiator

Externally Front Garden

Laid to lawn, wrap-around driveway and garage

Dining Room

11' 3" x 8' 8" (3.43m x 2.64m)

UPVC door to front, radiator

Rear Garden

Laid to lawn, patio, shed

Kitchen

15' 1" x 6' 7" (4.60m x 2.01m)

Range of wall and base units, window to rear, sink/drain, UPVC door to rear, oven with electric hob and extractor over, splashback.

Utility Room/Wc

8' 1" x 6' 6" (2.46m x 1.98m)

Range of base units, low level WC, towel rail, sink, window to side, boiler

Bedroom 1

12' 3" x 11' 9" (3.73m x 3.58m)

Window to front, radiator, mirrored wardrobes

Bedroom 2

11' 4" x 9' (3.45m x 2.74m)

Window to front, radiator

Bedroom 3

13' 4" x 9' 3" (4.06m x 2.82m)

Window to rear, radiator

Bathroom

Low level WC, window to rear, bath, sink with vanity unit, shower, towel rail

Loft Space





view this property online mannersandharrison.co.uk/Property/STO113643



welcome to

Beech Oval, Sedgefield STOCKTON-ON-TEES

- FRONT AND REAR GARDENS
- OFF-STREET PARKING
- IDEAL FOR FAMILIES
- GARAGE
- IDEAL FOR FIRST TIME BUYERS

Tenure: Freehold EPC Rating: D

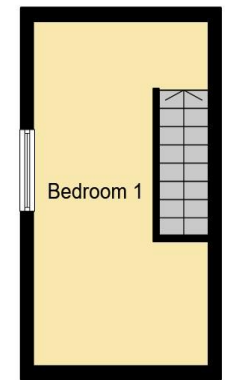
£189,950



Ground Floor



First Floor



Second Floor

This floor plan is for illustrative purposes only. It is not drawn to scale. Any measurements, floor areas (including any total floor area), openings and orientation are approximate. No details are guaranteed, they cannot be relied upon for any purpose and they do not form part of any agreement. No liability is taken for any error, omission or misstatement. A party must rely upon its own inspection(s). Powered by www.focalagent.com

view this property online mannersandharrison.co.uk/Property/STO113643



Property Ref:
STO113643 - 0003

1. MONEY LAUNDERING REGULATIONS Intending purchasers will be asked to produce identification documentation at a later stage and we would ask for your co-operation in order that there is no delay in agreeing the sale. 2. These particulars do not constitute part or all of an offer or contract. 3. The measurements indicated are supplied for guidance only and as such must be considered incorrect. Potential buyers are advised to recheck measurements before committing to any expense. 4. We have not tested any apparatus, equipment, fixtures or services and it is in the buyers interest to check the working condition of any appliances. 5. Where an EPC, or a Home Report (Scotland only) is held for this property, it is available for inspection at the branch by appointment. If you require a printed version of a Home Report, you will need to pay a reasonable production charge reflecting printing and other costs. 6. We are not able to offer an opinion either written or verbal on the content of these reports and this must be obtained from your legal representative. 7. Whilst we take care in preparing these reports, a buyer should ensure that his/her legal representative confirms as soon as possible all matters relating to title including the extent and boundaries of the property and other important matters before exchange of contracts.

manners & harrison



01642 606161



Stockton@mannersandharrison.co.uk



23 High Street, STOCKTON-ON-TEES,
Cleveland, TS18 1SP



mannersandharrison.co.uk