



**Thornaby Road, Thornaby Stockton-On-Tees TS17 0AA**

**welcome to**

## **Thornaby Road, Thornaby Stockton-On-Tees**

This spacious semi-detached House offered for sale sitting on an impressive plot in a popular area of Thornaby Road. The property boasts five double bedrooms, extensive living area, off street parking and fully enclosed and good size rear garden.

### **Entrance Hallway**

Oak Staircase with glass panells to first floor, oak doors, oak flooring.

### **Lounge/ Diner**

12' x 24' ( 3.66m x 7.32m )

Window to front elevation, two radiators, hardwood flooring, fireplace, sliding door to conservatory, space for table.

### **Conservatory/ Garden Room**

17' 11" x 11' Max ( 5.46m x 3.35m Max )

Of UPVC and brick construction, tiled flooring, double doors leading to rear garden, electric fireplace, TV point, views over the garden.

### **Ground Floor Bathroom**

Low level flush, wash hand basin with mixer tap, spa bath with mixer tap and shower attachment , chrome towel rail, spotlighting, extractor fan

### **Kitchen**

11' 10" x 13' ( 3.61m x 3.96m )

Range of wall and base units with working surface, built in fridge/freezer, space for range oven, extractor fan, built in dishwasher, sink unit with mixer tap and built in food waste disposal, window to front elevation, space for table, door through to Utility.

### **Utility**

12' x 6' 10" ( 3.66m x 2.08m )

Range of units with working surface, boiler, window to rear elevation, plumbed for washing machine, stainless steel sink, door to rear garden, oak door to Annex.

### **First Floor**

#### **Landing**

#### **Master Bedroom**

15' x 10' ( 4.57m x 3.05m )

TV point, window to front elevation, radiator. built in single cupboard with wardrobe space, fitted wardrobes and side tables.

#### **Bedroom 2**

12' Max x 11' 11" ( 3.66m Max x 3.63m )

Window to front elevation, radiator, hardwood flooring.

#### **Bedroom 3**

11' 11" Max x 8' ( 3.63m Max x 2.44m )

Window to rear elevation, hardwood flooring, radiator, TV point.

#### **Bedroom 4**

12' x 12' 11" ( 3.66m x 3.94m )

Access to loft, hardwood flooring, window to rear elevation, radiator, TV point.





### **Front Garden**

Gated access, laurel hedge, block paved drive for off road parking.

### **Rear Garden**

Enclosed via timber fence, mainly laid to lawn with shingle patio area, flowers and borders, trees, plants and shrubs, gated side access, shed.

### **Annex**

### **Lounge**

19' x 12' ( 5.79m x 3.66m )

Fireplace , hardwood flooring, TV point, door through to bedroom.

### **Bedroom**

12' x 13' 10" ( 3.66m x 4.22m )

Hardwood flooring, window to front elevation, radiator.

### **Shower Room**

Shower cubicle, low level flush wc , radiator, hardwood flooring, vanity wash hand basin.



***view this property online*** [mannersandharrison.co.uk/Property/STO113463](http://mannersandharrison.co.uk/Property/STO113463)



welcome to

## Thornaby Road, Thornaby Stockton-On-Tees

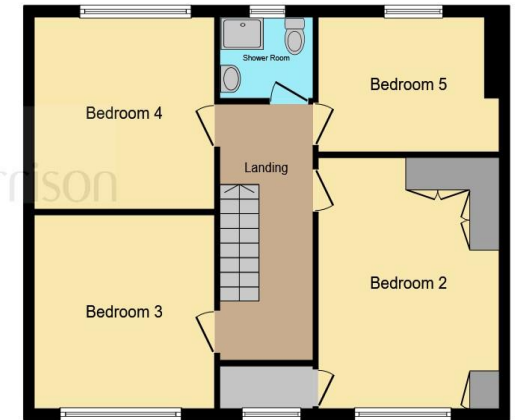
- SEMI- DETACHED PROPERTY WITH ANNEX
- LOUNGE/ DINER
- CONSERVATORY/ GARDEN ROOM
- FRONT & REAR GARDENS
- OFF STREET PARKING

Tenure: Freehold EPC Rating: D

**£295,000**



Ground Floor



First Floor

This floor plan is for illustrative purposes only. It is not drawn to scale. Any measurements, floor areas (including any total floor area), openings and orientation are approximate. No details are guaranteed, they cannot be relied upon for any purpose and they do not form part of any agreement. No liability is taken for any error, omission or misstatement. A party must rely upon its own inspection(s). Powered by www.focalagent.com

view this property online [mannersandharrison.co.uk/Property/STO113463](https://mannersandharrison.co.uk/Property/STO113463)



Property Ref:  
STO113463 - 0004

1. MONEY LAUNDERING REGULATIONS Intending purchasers will be asked to produce identification documentation at a later stage and we would ask for your co-operation in order that there is no delay in agreeing the sale. 2. These particulars do not constitute part or all of an offer or contract. 3. The measurements indicated are supplied for guidance only and as such must be considered incorrect. Potential buyers are advised to recheck measurements before committing to any expense. 4. We have not tested any apparatus, equipment, fixtures or services and it is in the buyers interest to check the working condition of any appliances. 5. Where an EPC, or a Home Report (Scotland only) is held for this property, it is available for inspection at the branch by appointment. If you require a printed version of a Home Report, you will need to pay a reasonable production charge reflecting printing and other costs. 6. We are not able to offer an opinion either written or verbal on the content of these reports and this must be obtained from your legal representative. 7. Whilst we take care in preparing these reports, a buyer should ensure that his/her legal representative confirms as soon as possible all matters relating to title including the extent and boundaries of the property and other important matters before exchange of contracts.

Manners & Harrison is a trading name of Sequence (UK) Limited which is registered in England and Wales under company number 4268443, Registered Office is Cumbria House, 16-20 Hockliffe Street, Leighton Buzzard, Bedfordshire, LU7 1GN. VAT Registration Number is 500 2481 05.



manners & harrison



**01642 606161**



Stockton@mannersandharrison.co.uk



23 High Street, STOCKTON-ON-TEES,  
Cleveland, TS18 1SP



**mannersandharrison.co.uk**

