



Clevegate, Nunthorpe, Middlesbrough, TS7 0LN

welcome to

Clevegate, Nunthorpe Middlesbrough

A spacious 4/5 bed roomed detached family home. Externally this home has front and rear gardens with a driveway to the front leading to the garage.

Entrance Porch

Entered via UPVC double glazed door, UPVC double glazed window to side aspect, access to ground floor WC.

Ground Floor Wc

Wash hand basin with mixer tap, wc, extractor fan.

Entrance Hallway

Stairs to first floor, radiator.

Lounge

17' 4" x 10' 11" (5.28m x 3.33m)

UPVC double glazed sliding doors leading to rear garden, TV point, telephone point, radiator, coved cornicing.

Dining Room

11' 7" x 9' (3.53m x 2.74m)

Picture style opening between lounge and dining room, radiator, coved cornicing.

Kitchen

15' 7" Max x 18' 7" Max (4.75m Max x 5.66m Max)

Range of base and wall units with complimentary working surfaces, radiator, UPVC double glazed window to front, recess for cooker, large extractor fan, sink with draining board and mixer tap, internal access to the garage, wooden single glazed door leading to side aspect.

Reception Room 3

17' 2" x 9' 2" (5.23m x 2.79m)

UPVC double glazed sliding door leading to rear garden, radiator, coved cornicing.

First Floor

Large Landing

Stairs from the hallway, UPVC double glazed window to side, radiator.

Family Bathroom

Highly modern bathroom, heated towel rail, floating sink with mixer tap, wc, UPVC double glazed window to front, full tiled, corner style bath with mixer tap, storage cupboard.

Shower Room

Wash hand basin with mixer tap, wc, UPVC double glazed window to side aspect, corner style shower cubicle with wall mounted shower, heated chrome towel rail.

Bedroom 1

11' 1" x 9' 2" (3.38m x 2.79m)

UPVC double glazed window to rear, radiator, coved cornicing.

Bedroom 2

11' 7" x 9' 2" (3.53m x 2.79m)

UPVC double glazed window to front, radiator, coved cornicing.

Bedroom 3

10' 3" x 9' 8" (3.12m x 2.95m)

UPVC double glazed window to front, radiator.

Bedroom 4

11' 11" x 9' 10" (3.63m x 3.00m)

UPVC double glazed window to the rear, radiator.

Bedroom 5

12' x 5' 10" (3.66m x 1.78m)

UPVC double glazed window to the rear, radiator.



Externally

Landscaped Rear Garden

On multiple levels, fully turfed with flower bed edging, enclosed via timber fencing.

Front Garden

Driveway leading to the garage, well manicured garden.



view this property online mannersandharrison.co.uk/Property/MAR109946



welcome to

Clevegate, Nunthorpe Middlesbrough

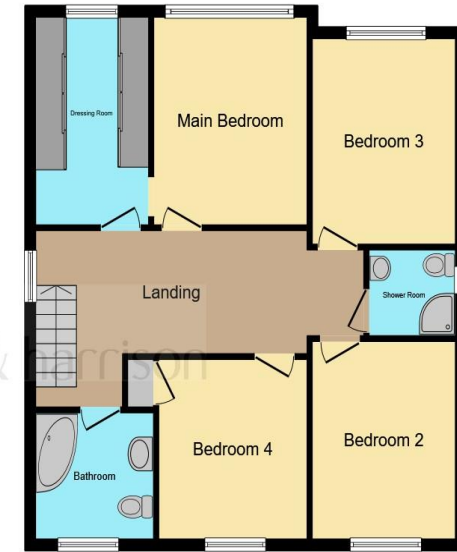
- DETACHED FAMILY HOME
- SPACIOUS ACCOMMODATION
- DOWNSTAIRS WC
- TWO BATHROOMS
- DRIVEWAY AND GARAGE

Tenure: Freehold EPC Rating: C

£340,000



Ground Floor



First Floor

This floor plan is for illustrative purposes only. It is not drawn to scale. Any measurements, floor areas (including any total floor area), openings and orientation are approximate. No details are guaranteed, they cannot be relied upon for any purpose and they do not form part of any agreement. No liability is taken for any error, omission or misstatement. A party must rely upon its own inspection(s). Powered by www.focalagent.com

view this property online mannersandharrison.co.uk/Property/MAR109946



Property Ref:
MAR109946 - 0002

1. MONEY LAUNDERING REGULATIONS Intending purchasers will be asked to produce identification documentation at a later stage and we would ask for your co-operation in order that there is no delay in agreeing the sale. 2. These particulars do not constitute part or all of an offer or contract. 3. The measurements indicated are supplied for guidance only and as such must be considered incorrect. Potential buyers are advised to recheck measurements before committing to any expense. 4. We have not tested any apparatus, equipment, fixtures or services and it is in the buyers interest to check the working condition of any appliances. 5. Where an EPC, or a Home Report (Scotland only) is held for this property, it is available for inspection at the branch by appointment. If you require a printed version of a Home Report, you will need to pay a reasonable production charge reflecting printing and other costs. 6. We are not able to offer an opinion either written or verbal on the content of these reports and this must be obtained from your legal representative. 7. Whilst we take care in preparing these reports, a buyer should ensure that his/her legal representative confirms as soon as possible all matters relating to title including the extent and boundaries of the property and other important matters before exchange of contracts.

Manners & Harrison is a trading name of Sequence (UK) Limited which is registered in England and Wales under company number 4268443, Registered Office is Cumbria House, 16-20 Hockliffe Street, Leighton Buzzard, Bedfordshire, LU7 1GN. VAT Registration Number is 500 2481 05.

manners & harrison



01642 311133



Marion@mannersandharrison.co.uk



30 & 30a Stokesley Road, Marton,
MIDDLESBROUGH, Cleveland, TS7 8DX



mannersandharrison.co.uk