



Cornflower Close, Hartlepool TS26 0WJ

welcome to

Cornflower Close, Hartlepool

This wonderful four-bedroom detached family home offers generous living space perfectly suited to a growing family.

Entrance Hall

UPVC front door, radiator, stairs to first floor, tiled flooring.

Downstairs Wc

Low level low flush WC, wash hand basin, radiator, tiled flooring.

Lounge

10' 5" x 16' 5" (3.17m x 5.00m)

Double glazed bay window to front, radiator, carpet, feature surround with gas fire.

Study Room

9' x 8' 6" (2.74m x 2.59m)

Double glazed window to front, radiator, carpet.

Kitchen/Diner

26' 8" x 12' 4" (8.13m x 3.76m)

Spotlights, double glazed window to rear, french doors to rear, two radiators, tiled flooring, integrated oven, gas hob and extractor over, belfast sink with chrome tap, shaker style wall and base units with oak worktops and tiled splashbacks, integrated dishwasher, integrated fridge/freezer.

Utility Room

6' 7" x 5' 1" (2.01m x 1.55m)

Worktop space, radiator, stainless steel sink/drainер with mixer tap, under counter cupboard, space for washing machine & tumble dryer, door to side giving access to the garden, tiled flooring, recently fitted combi boiler.

Landing

Storage cupboard, loft hatch access with pull down ladder that is part boarded.

Bedroom 1

14' 9" x 10' 8" (4.50m x 3.25m)

Double glazed bay window to front, fitted wardrobes, radiator, carpet.

En-Suite

Double shower, pedestal wash hand basin, low level low flush WC, radiator, double glazed window to front, vinyl flooring.

Bedroom 2

10' 8" x 11' 1" (3.25m x 3.38m)

Double glazed window to rear, radiator, carpet.

Bedroom 3

8' 3" x 9' (2.51m x 2.74m)

Double glazed window to front, radiator, carpet.

Bedroom 4

8' 3" x 7' 9" (2.51m x 2.36m)

Double glazed window to rear, radiator, carpet.

Bathroom

Bath, low level low flush WC, pedestal wash hand basin, double glazed window to rear, radiator, vinyl flooring.

Loft Space

Part boarded, pull down ladder, lighting.

Front Garden

Laid to lawn with path to front door, & side of house.

Rear Garden

South facing with lawned and decking areas.

Parking

Driveway to the rear leading to single garage.





Agents Note

Disclaimer:

Under the terms of the Estate Agents Act 1979 (section 21) please note that the vendor of this property is an employee of the Connells Group.



view this property online mannersandharrison.co.uk/Property/HAR120110



welcome to

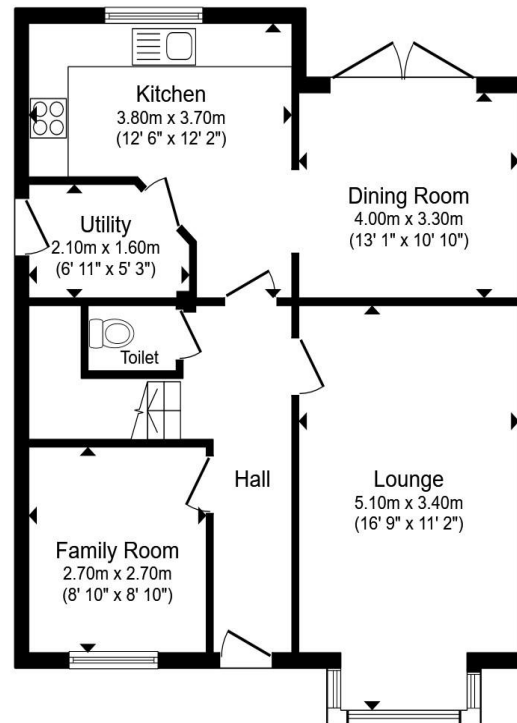
Cornflower Close, Hartlepool

- TWO SPACIOUS RECEPTION ROOMS
- UTILITY ROOM
- MODERN KITCHEN
- MASTER BEDROOM WITH EN-SUITE
- SOUTH FACING REAR GARDEN

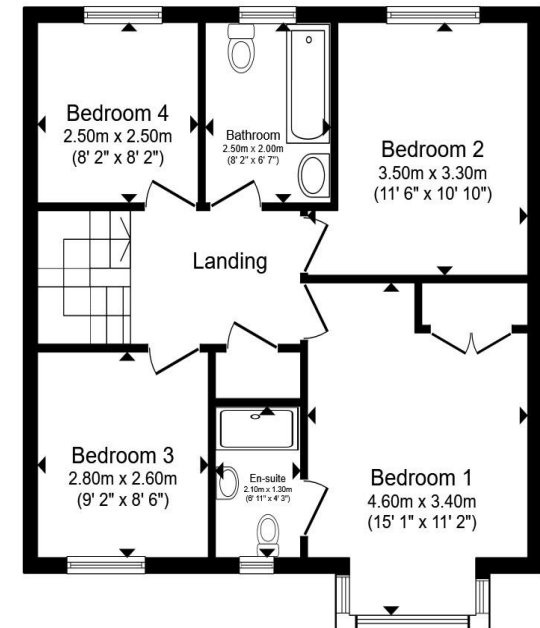
Tenure: Freehold EPC Rating: Awaited

Council Tax Band: E

£270,000



Ground Floor



First Floor

Total floor area 119.7 m² (1,289 sq.ft.) approx

This floor plan is for illustrative purposes only. It is not drawn to scale. Any measurements, floor areas (including any total floor area), openings and orientation are approximate. No details are guaranteed, they cannot be relied upon for any purpose and they do not form part of any agreement. No liability is taken for any error, omission or misstatement. A party must rely upon its own inspection(s). Powered by www.propertybox.io

manners & harrison

view this property online mannersandharrison.co.uk/Property/HAR120110

Under the terms of the Estate Agency Act 1979 (Section 21), please note that the vendor is an Employee of the Connells



Property Ref:
HAR120110 - 0005

1. MONEY LAUNDERING REGULATIONS Intending purchasers will be asked to produce identification documentation at a later stage and we would ask for your co-operation in order that there is no delay in agreeing the sale. 2. These particulars do not constitute part or all of an offer or contract. 3. The measurements indicated are supplied for guidance only and as such must be considered incorrect. Potential buyers are advised to recheck measurements before committing to any expense. 4. We have not tested any apparatus, equipment, fixtures or services and it is in the buyers interest to check the working condition of any appliances. 5. Where an EPC, or a Home Report (Scotland only) is held for this property, it is available for inspection at the branch by appointment. If you require a printed version of a Home Report, you will need to pay a reasonable production charge reflecting printing and other costs. 6. We are not able to offer an opinion either written or verbal on the content of these reports and this must be obtained from your legal representative. 7. Whilst we take care in preparing these reports, a buyer should ensure that his/her legal representative confirms as soon as possible all matters relating to title including the extent and boundaries of the property and other important matters before exchange of contracts.

Manners & Harrison is a trading name of Sequence (UK) Limited which is registered in England and Wales under company number 4268443, Registered Office is Cumbria House, 16-20 Hockliffe Street, Leighton Buzzard, Bedfordshire, LU7 1GN. VAT Registration Number is 500 2481 05.

manners & harrison



01429 261351



Hartlepool@mannersandharrison.co.uk



Shrewsbury House 129 York Road,
HARTLEPOOL, Durham, TS26 9DW



mannersandharrison.co.uk