



Aspen Gardens, Hartlepool TS27 3DD

welcome to

Aspen Gardens, Hartlepool

Superb Three Bedroom, Three Storey Semi-Detached Home. Positioned within the highly sought-after Bellway development, this exceptional new build offers stylish and versatile living arranged across three floors - perfectly designed for modern family life!

Entrance Hall

Composite door to front, staircase to first floor, radiator.

Lounge

14' 3" x 9' 5" (max) (4.34m x 2.87m (max))
Window to front, radiator.

Kitchen/Diner

12' 6" x 10' 2" (3.81m x 3.10m)
Window to rear, french door to rear, wall and base units with complimentary working surfaces and composite splashback tiling, oven with hob and hood over, recess and plumbing for washing machine, radiator, under stairs storage cupboard.

Landing

Window to side.

Bedroom 2

9' 1" x 12' 6" (max) (2.77m x 3.81m (max))
(first floor) Window to rear, radiator, storage cupboard.

Bedroom 3

8' 3" x 6' 1" (2.51m x 1.85m)
(first floor) window to front, radiator.

Bathroom

Low level low flush WC, wall mounted wash hand basin with mixer tap, panell bath with mixer tap, extractor fan, radiator.

Landing

Bedroom 1

13' 9" (max) x 12' 5" (ic dormer) (4.19m (max) x 3.78m (ic dormer))
Dorma, window to front, window to side, fitted wardrobes, radiator.

En-Suite

mains shower cubicle, radiator, velux window to rear, low level low flush WC, wall mounted wash hand basin with mixer tap.

Rear Garden

Lawned, enclosed, patio, shed.





view this property online mannersandharrison.co.uk/Property/HAR119875



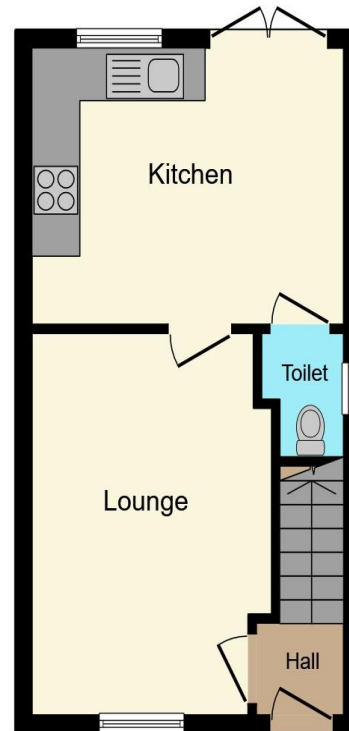
welcome to

Aspen Gardens, Hartlepool

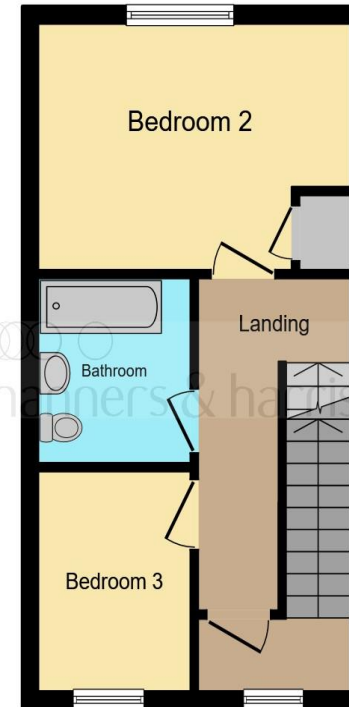
- THREE STOREY SEMI DETACHED HOME
- OPEN PLAN KITCHEN
- MASTER BEDROOM WITH EN-SUITE
- DOUBLE DRIVEWAY
- REAR GARDEN

Tenure: Freehold EPC Rating: B
Council Tax Band: C

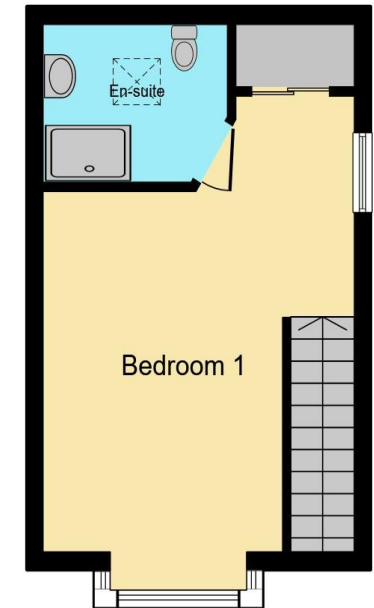
£200,000



Ground Floor



First Floor



Second Floor

This floor plan is for illustrative purposes only. It is not drawn to scale. Any measurements, floor areas (including any total floor area), openings and orientation are approximate. No details are guaranteed, they cannot be relied upon for any purpose and they do not form part of any agreement. No liability is taken for any error, omission or misstatement. A party must rely upon its own inspection(s). Powered by www.focalagent.com

view this property online mannersandharrison.co.uk/Property/HAR119875



Property Ref:
HAR119875 - 0004

1. MONEY LAUNDERING REGULATIONS Intending purchasers will be asked to produce identification documentation at a later stage and we would ask for your co-operation in order that there is no delay in agreeing the sale. 2. These particulars do not constitute part or all of an offer or contract. 3. The measurements indicated are supplied for guidance only and as such must be considered incorrect. Potential buyers are advised to recheck measurements before committing to any expense. 4. We have not tested any apparatus, equipment, fixtures or services and it is in the buyers interest to check the working condition of any appliances. 5. Where an EPC, or a Home Report (Scotland only) is held for this property, it is available for inspection at the branch by appointment. If you require a printed version of a Home Report, you will need to pay a reasonable production charge reflecting printing and other costs. 6. We are not able to offer an opinion either written or verbal on the content of these reports and this must be obtained from your legal representative. 7. Whilst we take care in preparing these reports, a buyer should ensure that his/her legal representative confirms as soon as possible all matters relating to title including the extent and boundaries of the property and other important matters before exchange of contracts.

Manners & Harrison is a trading name of Sequence (UK) Limited which is registered in England and Wales under company number 4268443, Registered Office is Cumbria House, 16-20 Hockliffe Street, Leighton Buzzard, Bedfordshire, LU7 1GN. VAT Registration Number is 500 2481 05.

manners & harrison



01429 261351



Hartlepool@mannersandharrison.co.uk



Shrewsbury House 129 York Road,
HARTLEPOOL, Durham, TS26 9DW



mannersandharrison.co.uk