

St. Catherines Court, Hartlepool TS24 7HZ

welcome to

St. Catherines Court, Hartlepool

Deceptively spacious, three bedroomed, end terraced family home which has been lovingly cared for by the current owner since new. Located in an established residential area close to the sea front, town centre, Marina and train station.

Entrance Hallway

Entered via UPVC double glazed door, laminate flooring, stairs to first floor, radiator, storage cupboard, doors leading to all principal rooms, under stairs storage cupboard.

Ground Floor Wc

UPVC double glazed window to rear, low level low flush wc, wash hand basin with tiled splashback, radiator, tiled floor.

Lounge

11' 3" Max x 16' 3" Into bay window (3.43m Max x 4.95m Into bay window)

UPVC double glazed bay window to front, TV point, laminate flooring, feature wood decorative surround with marble hearth, coved cornicing.

Kitchen

7' 7" x 14' 2" (2.31m x 4.32m)

Fitted with a range of wood effect shaker style wall and base units with contrasting working surfaces and matching upstands, tiled splashback, recess for cooker, extractor over, radiator, tiled flooring, stainless steel 1 1/2 bowl sink/ drainer with mixer tap, plumbing and recess for washing machine, recess for tumble dryer.

Rear Lobby

Giving access to the rear garden with a UPVC double glazed door to the rear.

First Floor

Landing

Stairs from hallway, UPVC double glazed window to side, radiator, doors leading to all principal rooms, built in storage cupboard.

Family Bathroom

UPVC double glazed window to rear, panelled bath with electric shower over, tiled walls, laminate flooring, low level low flush wc, wash hand basin on a vanity unit, tiled splashback, chrome heated towel rail, extractor fan.

Bedroom 1

11' 4" x 13' 5" Excluding box bay window. (3.45m x 4.09m Excluding box bay window.)

UPVC double glazed box bay window to front, TV point, radiator.

Bedroom 2

7' 10" x 13' 4" (2.39m x 4.06m)

UPVC double glazed window to rear, radiator.

Bedroom 3

6' 6" x 9' 11" (1.98m x 3.02m)

UPVC double glazed window to front, radiator.





Externally

Front Garden

Low maintenance, wall enclosed with stone bed area, patio area, wrought iron gate to the side, walkway to the front door, wooden gate leading to the rear.

Rear Garden

Wall and fence enclosed, low maintenance, block paved driveway, patio area, double wooden gates for access to the drive.



view this property online mannersandharrison.co.uk/Property/HAR119187



welcome to

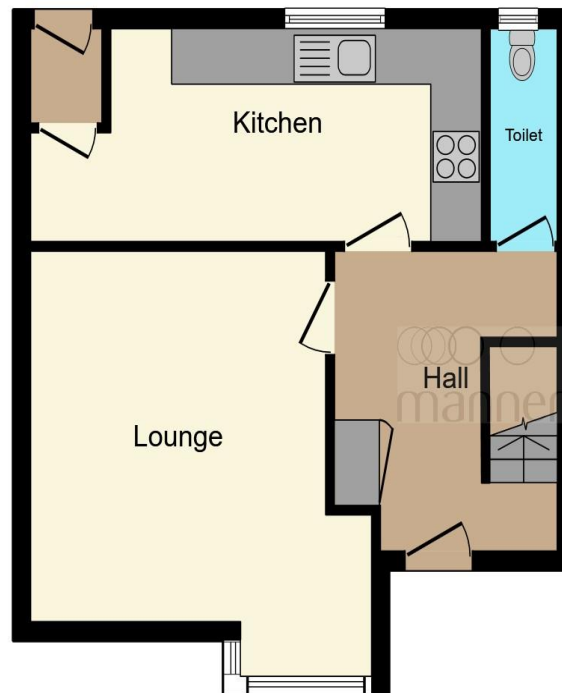
St. Catherines Court, Hartlepool

- SUITABLE FOR A RANGE OF BUYERS
- GROUND FLOOR WC
- FRONT AND REAR GARDENS
- OFF STREET PARKING
- DECEPTIVELY SPACIOUS

Tenure: Freehold EPC Rating: C

Council Tax Band: A

£100,000



Ground Floor



First Floor

This floor plan is for illustrative purposes only. It is not drawn to scale. Any measurements, floor areas (including any total floor area), openings and orientation are approximate. No details are guaranteed, they cannot be relied upon for any purpose and they do not form part of any agreement. No liability is taken for any error, omission or misstatement. A party must rely upon its own inspection(s). Powered by www.focalagent.com

view this property online mannersandharrison.co.uk/Property/HAR119187



Property Ref:
HAR119187 - 0004

1. MONEY LAUNDERING REGULATIONS Intending purchasers will be asked to produce identification documentation at a later stage and we would ask for your co-operation in order that there is no delay in agreeing the sale. 2. These particulars do not constitute part or all of an offer or contract. 3. The measurements indicated are supplied for guidance only and as such must be considered incorrect. Potential buyers are advised to recheck measurements before committing to any expense. 4. We have not tested any apparatus, equipment, fixtures or services and it is in the buyers interest to check the working condition of any appliances. 5. Where an EPC, or a Home Report (Scotland only) is held for this property, it is available for inspection at the branch by appointment. If you require a printed version of a Home Report, you will need to pay a reasonable production charge reflecting printing and other costs. 6. We are not able to offer an opinion either written or verbal on the content of these reports and this must be obtained from your legal representative. 7. Whilst we take care in preparing these reports, a buyer should ensure that his/her legal representative confirms as soon as possible all matters relating to title including the extent and boundaries of the property and other important matters before exchange of contracts.

Manners & Harrison is a trading name of Sequence (UK) Limited which is registered in England and Wales under company number 4268443, Registered Office is Cumbria House, 16-20 Hockliffe Street, Leighton Buzzard, Bedfordshire, LU7 1GN. VAT Registration Number is 500 2481 05.


manners & harrison



01429 261351



Hartlepool@mannersandharrison.co.uk



Shrewsbury House 129 York Road,
HARTLEPOOL, Durham, TS26 9DW



mannersandharrison.co.uk