



**East View Terrace, Hartlepool TS25 1AN**

**welcome to**

## **East View Terrace, Hartlepool**

Deceiving spacious is this 3 bedroomed home, situated just a short stroll from the sea front in Seaton Carew. Within close proximity to the bars, restaurants and amusements! No onward Chain!

### **Entrance Hall**

Entered via UPVC double glazed door, stairs to first floor, laminate flooring, door to lounge.

### **Lounge**

15' 11" Into alcoves x 13' 7" Plus bay ( 4.85m Into alcoves x 4.14m Plus bay )

Carpet, radiator, fireplace housing gas fire, UPVC bay window to front, coved cornicing, TV point, under stairs storage cupboard.

### **Kitchen/Diner**

19' x 10' 3" ( 5.79m x 3.12m )

Fitted with a range of wood veneer wall and base units with contrasting working surfaces, tiled splashback, 1 1/2 stainless steel sink and draining board with mixer tap, electric oven, four ring gas hob with extractor over, plumbing for washing machine, space for dryer, storage cupboard, cupboard housing boiler, tiled effect vinyl, two UPVC windows to rear, radiator, UPVC french doors to rear.

### **Landing**

Hall to landing, carpets, coved cornicing, radiator, spotlights, loft access.

### **First Floor**

#### **Bedroom 1**

13' 6" x 9' 2" (to front of robes) ( 4.11m x 2.79m (to front of robes) )

UPVC double glazed window to front, radiator, carpet, fitted part mirrored sliding wardrobes.

#### **Bedroom 2**

10' 5" x 7' 6" ( 3.17m x 2.29m )

UPVC double glazed window to rear, radiator,

carpet.

#### **Bedroom 3**

8' x 6' 11" ( 2.44m x 2.11m )

UPVC double glazed window to rear, carpet, radiator.

### **Bathroom**

Window to front, corner bath with mixer tap and hand held shower attachment, electric shower over, pedestal wash hand basin, tiled affect flooring, part tiled walls, chrome heated towel rail, UPVC opaque window to front.

### **Separate Wc**

WC, part tiled walls, UPVC double glazed window to rear.







### **Externally**

#### **Front Garden**

Palisade.

#### **Rear Garden**

Lawn, paved patio, gate to rear, shed.

#### **Parking**

On street resident permit parking.



***view this property online*** [mannersandharrison.co.uk/Property/HAR117877](http://mannersandharrison.co.uk/Property/HAR117877)



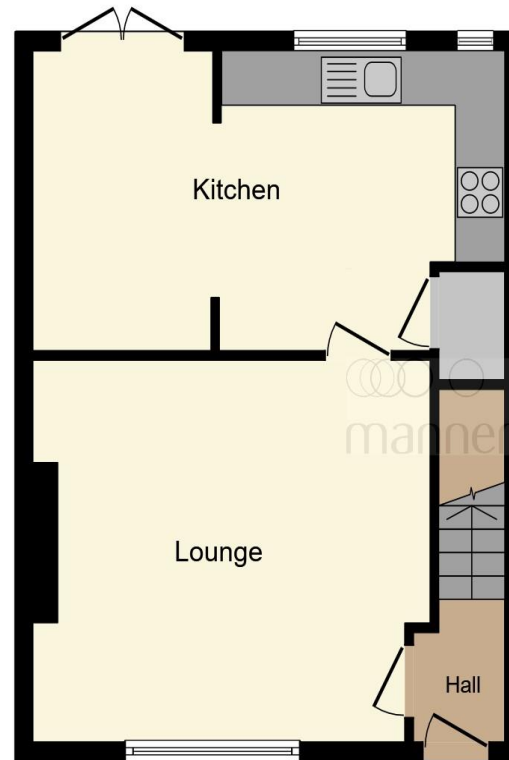
welcome to

## East View Terrace, Hartlepool

- 3 BEDROOM FAMILY HOME
- CLOSE TO SEAFRONT
- NEAR BARS, RESTAURANTS, AMUSEMENTS AND LOCAL BUS ROUTES
- CHAIN FREE!
- REAR GARDEN

Tenure: Freehold EPC Rating: C

**£140,000**



**Ground Floor**



**First Floor**

This floor plan is for illustrative purposes only. It is not drawn to scale. Any measurements, floor areas (including any total floor area), openings and orientation are approximate. No details are guaranteed, they cannot be relied upon for any purpose and they do not form part of any agreement. No liability is taken for any error, omission or misstatement. A party must rely upon its own inspection(s). Powered by [www.focalagent.com](http://www.focalagent.com)

**view this property online** [mannersandharrison.co.uk/Property/HAR117877](http://mannersandharrison.co.uk/Property/HAR117877)



Property Ref:  
HAR117877 - 0006

1. MONEY LAUNDERING REGULATIONS Intending purchasers will be asked to produce identification documentation at a later stage and we would ask for your co-operation in order that there is no delay in agreeing the sale. 2. These particulars do not constitute part or all of an offer or contract. 3. The measurements indicated are supplied for guidance only and as such must be considered incorrect. Potential buyers are advised to recheck measurements before committing to any expense. 4. We have not tested any apparatus, equipment, fixtures or services and it is in the buyers interest to check the working condition of any appliances. 5. Where an EPC, or a Home Report (Scotland only) is held for this property, it is available for inspection at the branch by appointment. If you require a printed version of a Home Report, you will need to pay a reasonable production charge reflecting printing and other costs. 6. We are not able to offer an opinion either written or verbal on the content of these reports and this must be obtained from your legal representative. 7. Whilst we take care in preparing these reports, a buyer should ensure that his/her legal representative confirms as soon as possible all matters relating to title including the extent and boundaries of the property and other important matters before exchange of contracts.

Manners & Harrison is a trading name of Sequence (UK) Limited which is registered in England and Wales under company number 4268443, Registered Office is Cumbria House, 16-20 Hockliffe Street, Leighton Buzzard, Bedfordshire, LU7 1GN. VAT Registration Number is 500 2481 05.

  
**manners & harrison**



**01429 261351**



[Hartlepool@mannersandharrison.co.uk](mailto:Hartlepool@mannersandharrison.co.uk)



Shrewsbury House 129 York Road,  
HARTLEPOOL, Durham, TS26 9DW



**[mannersandharrison.co.uk](http://mannersandharrison.co.uk)**