



Poole Gardens, Hartlepool TS26 8GG

welcome to

Poole Gardens, Hartlepool

This stunning, two bedroom, two bathroom, end of terrace home offers ultra modern living and is move in ready, having undergone impressive upgrades in recent years.

Entrance Hallway

Accessed via door to front, staircase to first floor.

Cloakroom

Corner wash hand basin, low level low flush WC, radiator, window to front.

Kitchen/Living/Diner

24' 9" maximum x 13' 7" maximum (7.54m maximum x 4.14m maximum)

Wall and base units, composite window to side, plumbing for washing machine and dryer, electric built in oven with extractor over, sink and draining board with mixer tap, radiator.

First Floor Landing

Loft hatch access, radiator.

Bedroom 1

9' 8" maximum x 10' 2" maximum (2.95m maximum x 3.10m maximum)

Window to front, radiator.

En Suite

Storage cupboard, low level low flush WC, window to front, corner wash hand basin, radiator.

Bedroom 2

11' 8" maximum x 9' 2" excluding wardrobes (3.56m maximum x 2.79m excluding wardrobes)

3 windows to rear, built in wardrobes,

En Suite 2

Bath with mixer tap and shower head, window to side, low level low flush WC, pedestal wash hand basin.





Externally

Front Garden

Lawned area.

Rear Garden

Low maintenance rear garden, pebbled, enclosed.

Parking

Car parking space.



view this property online mannersandharrison.co.uk/Property/HAR118938



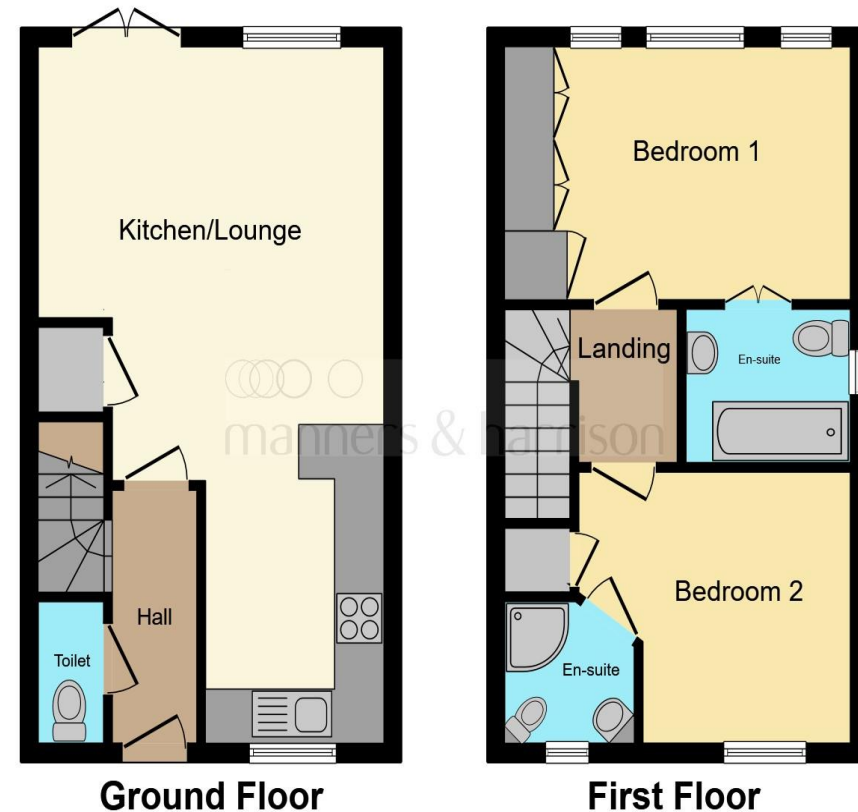
welcome to

Poole Gardens, Hartlepool

- MOVE IN READY
- FANTASTIC FIRST TIME BUY
- AMAZING INVESTOR OPPORTUNITY
- EN SUITES
- ENCLOSED REAR GARDEN

Tenure: Freehold EPC Rating: C

£100,000



This floor plan is for illustrative purposes only. It is not drawn to scale. Any measurements, floor areas (including any total floor area), openings and orientation are approximate. No details are guaranteed, they cannot be relied upon for any purpose and they do not form part of any agreement. No liability is taken for any error, omission or misstatement. A party must rely upon its own inspection(s). Powered by www.focalagent.com

view this property online mannersandharrison.co.uk/Property/HAR118938



Property Ref:
HAR118938 - 0003

1. MONEY LAUNDERING REGULATIONS Intending purchasers will be asked to produce identification documentation at a later stage and we would ask for your co-operation in order that there is no delay in agreeing the sale. 2. These particulars do not constitute part or all of an offer or contract. 3. The measurements indicated are supplied for guidance only and as such must be considered incorrect. Potential buyers are advised to recheck measurements before committing to any expense. 4. We have not tested any apparatus, equipment, fixtures or services and it is in the buyers interest to check the working condition of any appliances. 5. Where an EPC, or a Home Report (Scotland only) is held for this property, it is available for inspection at the branch by appointment. If you require a printed version of a Home Report, you will need to pay a reasonable production charge reflecting printing and other costs. 6. We are not able to offer an opinion either written or verbal on the content of these reports and this must be obtained from your legal representative. 7. Whilst we take care in preparing these reports, a buyer should ensure that his/her legal representative confirms as soon as possible all matters relating to title including the extent and boundaries of the property and other important matters before exchange of contracts.

Manners & Harrison is a trading name of Sequence (UK) Limited which is registered in England and Wales under company number 4268443, Registered Office is Cumbria House, 16-20 Hockliffe Street, Leighton Buzzard, Bedfordshire, LU7 1GN. VAT Registration Number is 500 2481 05.


manners & harrison



01429 261351



Hartlepool@mannersandharrison.co.uk



Shrewsbury House 129 York Road,
HARTLEPOOL, Durham, TS26 9DW



mannersandharrison.co.uk