



Stockton Road, Hartlepool TS25 2PQ

welcome to

Stockton Road, Hartlepool

Set within the contemporary Owton Grange development, this property is perfectly situated for convenient access to local schools, shops, and transport links.

Entrance Hallway

Accessed via wooden double glazed door, laminate floor, staircase to first floor.

Downstairs Wc

Low level low flush WC, corner mounted wash hand basin with tiled splashback, chrome heated towel rail, extractor fan.

Kitchen

8' 3" x 15' 3" (2.51m x 4.65m)

Range of wooden wall and base units with contrasting laminate work surfaces, single stainless steel sink with drainer and mixer tap, tiled splashback all the way around, plumbing for washing machine and dishwasher, 4 ring integrated gas hob, integrated electric oven plus extractor canopy, space for dryer and double door American style fridge freezer, radiator.

Reception Room 1

12' maximum x 15' maximum (3.66m maximum x 4.57m maximum)

2 UPVC double glazed french doors to rear, understairs storage cupboard, radiator.

Conservatory

7' 8" x 14' 10" (2.34m x 4.52m)

UPVC double glazed windows all the way around, plastic roof, UPVC double glazed french doors leading to rear garden.

First Floor Landing

Loft access, radiator.

Bedroom 1

8' 3" x 11' 10" (2.51m x 3.61m)

UPVC double glazed windows to rear, floor to ceiling 3 door sliding glass mirrored wardrobes.

En Suite

Low level low flush WC, pedestal mounted hand wash basin, chrome heated towel rail, UPVC double glazed window to rear, extractor fan, walk in shower with cladded walls, extra Triton electric shower.

Bedroom 2

8' 1" maximum x 13' 5" maximum (2.46m maximum x 4.09m maximum)

UPVC double glazed window to rear, radiator.

Bedroom 3

9' 8" x 6' 7" (2.95m x 2.01m)

UPVC double glazed window to rear, radiator.

Bathroom

Laminate flooring, 3 piece bathroom suite comprising of:- white panelled bath with individual taps, part tiled walls, low level low flush WC, extractor fan, pedestal mounted wash hand basin with tiled splashback, chrome heated towel rail, UPVC double glazed window to side.

Externally

Front Garden

Gates access, paved footpath leading to garden area with artificial lawn, seating area.

Rear Garden

Concrete footpath, gates access to rear, driveway, area laid to lawn.





view this property online mannersandharrison.co.uk/Property/HAR118540



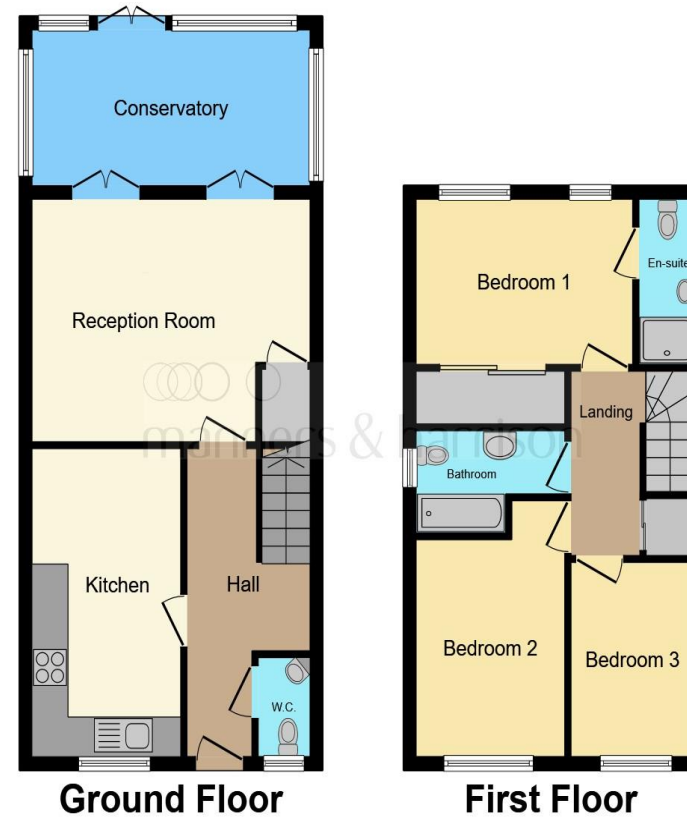
welcome to

Stockton Road, Hartlepool

- CONVENIENTLY LOCATED
- SPACIOUS
- GUEST WC
- CONSERVATORY
- EN SUITE

Tenure: Freehold EPC Rating: C

£130,000



This floor plan is for illustrative purposes only. It is not drawn to scale. Any measurements, floor areas (including any total floor area), openings and orientation are approximate. No details are guaranteed, they cannot be relied upon for any purpose and they do not form part of any agreement. No liability is taken for any error, omission or misstatement. A party must rely upon its own inspection(s). Powered by www.focalagent.com

view this property online mannersandharrison.co.uk/Property/HAR118540



Property Ref:
HAR118540 - 0002

1. MONEY LAUNDERING REGULATIONS Intending purchasers will be asked to produce identification documentation at a later stage and we would ask for your co-operation in order that there is no delay in agreeing the sale. 2. These particulars do not constitute part or all of an offer or contract. 3. The measurements indicated are supplied for guidance only and as such must be considered incorrect. Potential buyers are advised to recheck measurements before committing to any expense. 4. We have not tested any apparatus, equipment, fixtures or services and it is in the buyers interest to check the working condition of any appliances. 5. Where an EPC, or a Home Report (Scotland only) is held for this property, it is available for inspection at the branch by appointment. If you require a printed version of a Home Report, you will need to pay a reasonable production charge reflecting printing and other costs. 6. We are not able to offer an opinion either written or verbal on the content of these reports and this must be obtained from your legal representative. 7. Whilst we take care in preparing these reports, a buyer should ensure that his/her legal representative confirms as soon as possible all matters relating to title including the extent and boundaries of the property and other important matters before exchange of contracts.

manners & harrison



01429 261351



Hartlepool@mannersandharrison.co.uk



Shrewsbury House 129 York Road,
HARTLEPOOL, Durham, TS26 9DW



mannersandharrison.co.uk

Manners & Harrison is a trading name of Sequence (UK) Limited which is registered in England and Wales under company number 4268443, Registered Office is Cumbria House, 16-20 Hockliffe Street, Leighton Buzzard, Bedfordshire, LU7 1GN. VAT Registration Number is 500 2481 05.