



Milbank Close, Hart Hartlepool TS27 3BT

welcome to

Milbank Close, Hart Hartlepool

An extended 3 bedroomed mid terrace with a lovely outlook over the green in Hart Village. This home has been well maintained and boasts a Kitchen extension and reconfiguration. Low maintenance gardens are to both front and rear aspects along with Garage and on street parking to the rear.

Entrance Hall

Composite door to front, radiator, stairs to first floor.

Lounge

13' 5" Max x 12' 5" Max (4.09m Max x 3.78m Max)
Window to front, fireplace, radiator, understairs storage cupboard.

Extended Kitchen/ Diner

15' 6" Max x 14' 4" Max (4.72m Max x 4.37m Max)
Open plan, fitted with a range of modern wall and base units with contrasting working surfaces and complimenting splashbacks, built in oven, hob and extractor hood, plumbing and recess for washing machine, integrated dishwasher, cupboard housing boiler, spotlighting to ceiling, French doors to rear, window to rear.

First Floor

Landing

Loft access.

Bedroom 1

15' 2" Max x 8' 7" Max (4.62m Max x 2.62m Max)
Window to front, radiator.

Bedroom 2

9' 3" x 9' 2" (2.82m x 2.79m)
Window to rear, radiator, storage cupboard.

Bedroom 3

10' 1" Max x 6' 7" Max (3.07m Max x 2.01m Max)
Window to front, radiator, over stairs storage cupboard.

Bathroom

Bath with mains shower over, low level low flush wc, pedestal wash hand basin, chrome heated towel rail, window to rear.





Externally

Front Garden

Astro turf for ease of maintenance, on street parking.

Rear Garden

Stone patio with planted borders, personal door to garage.

Garage

To rear.



view this property online mannersandharrison.co.uk/Property/HAR118344



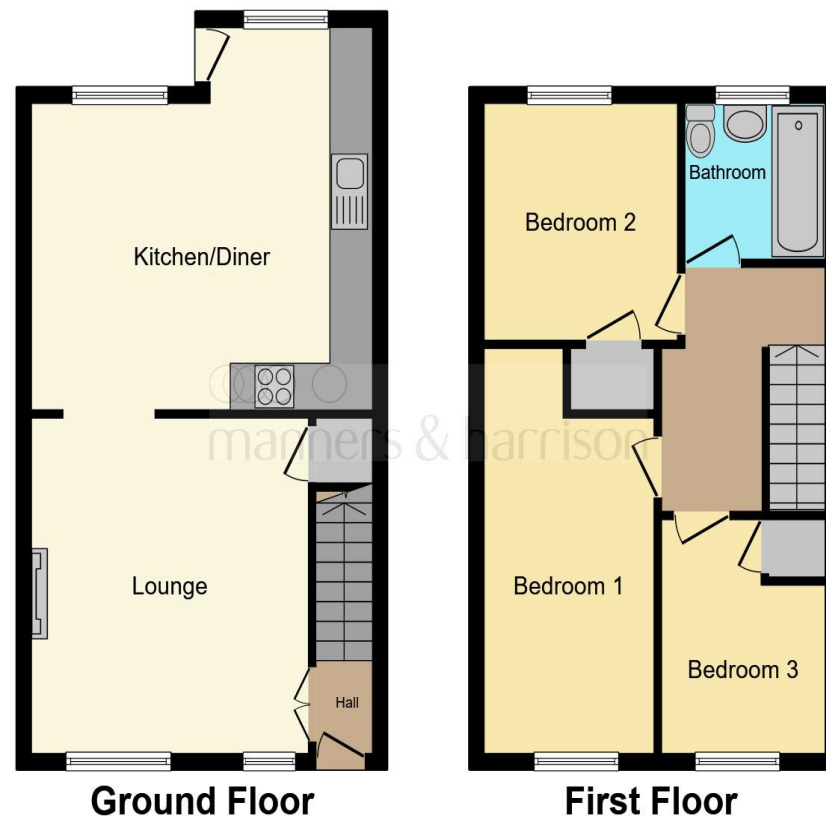
welcome to

Milbank Close, Hart Hartlepool

- LOUNGE
- OPEN PLAN KITCHEN/ DINER
- LOW MAINTENANCE GARDENS TO FRONT AND REAR
- GARAGE
- ON STREET PARKING

Tenure: Freehold EPC Rating: C

£150,000



This floor plan is for illustrative purposes only. It is not drawn to scale. Any measurements, floor areas (including any total floor area), openings and orientation are approximate. No details are guaranteed, they cannot be relied upon for any purpose and they do not form part of any agreement. No liability is taken for any error, omission or misstatement. A party must rely upon its own inspection(s). Powered by www.focalagent.com

view this property online mannersandharrison.co.uk/Property/HAR118344



Property Ref:
HAR118344 - 0003

1. MONEY LAUNDERING REGULATIONS Intending purchasers will be asked to produce identification documentation at a later stage and we would ask for your co-operation in order that there is no delay in agreeing the sale. 2. These particulars do not constitute part or all of an offer or contract. 3. The measurements indicated are supplied for guidance only and as such must be considered incorrect. Potential buyers are advised to recheck measurements before committing to any expense. 4. We have not tested any apparatus, equipment, fixtures or services and it is in the buyers interest to check the working condition of any appliances. 5. Where an EPC, or a Home Report (Scotland only) is held for this property, it is available for inspection at the branch by appointment. If you require a printed version of a Home Report, you will need to pay a reasonable production charge reflecting printing and other costs. 6. We are not able to offer an opinion either written or verbal on the content of these reports and this must be obtained from your legal representative. 7. Whilst we take care in preparing these reports, a buyer should ensure that his/her legal representative confirms as soon as possible all matters relating to title including the extent and boundaries of the property and other important matters before exchange of contracts.

Manners & Harrison is a trading name of Sequence (UK) Limited which is registered in England and Wales under company number 4268443, Registered Office is Cumbria House, 16-20 Hockliffe Street, Leighton Buzzard, Bedfordshire, LU7 1GN. VAT Registration Number is 500 2481 05.


manners & harrison



01429 261351



Hartlepool@mannersandharrison.co.uk



Shrewsbury House 129 York Road,
HARTLEPOOL, Durham, TS26 9DW



mannersandharrison.co.uk