



Whin Meadows, Hartlepool TS24 9NX

welcome to

Whin Meadows, Hartlepool

This beautiful, 3 bedroom, detached home in Whin Meadows, close to local amenities, shops and transport links is ideal for those looking to upsize and not have to do any work.

Entrance

Accessed via composite double glazed door.

Kitchen

11' 4" maximum x 12' 3" maximum (3.45m maximum x 3.73m maximum)

Door to garage, radiator, range of high gloss wall and base units, quartz worktops with matching surrounds and splashback, inset single sink with mixer tap and hose attachment plus integrated drainer, electric 5 ring hob, integrated double oven, the bottom being a single and the top being a 3-in-1 combi oven/grill/microwave, integrated washing machine, integrated dishwasher, integrated single door fridge freezer, UPVC double glazed window to front, laminate flooring.

Living Room / Diner

14' 3" maximum x 20' 2" maximum (4.34m maximum x 6.15m maximum)

UPVC double glazed window to rear, 2 radiators, staircase to first floor, UPVC double glazed French doors leading to conservatory.

Conservatory

9' x 8' 8" (2.74m x 2.64m)

UPVC double glazed French doors to side, plastic roof with UPVC double glazed windows all the way around, laminate flooring.

First Floor Landing

Loft void access with ladder, storage cupboard, doors to bedrooms.

Bedroom 1

11' 1" x 11' 2" (3.38m x 3.40m)

UPVC double glazed window to rear, integrated double door sliding wardrobes, radiator.

En Suite

Cushioned lino flooring, low level low flush WC, vanity unit hand wash basin, double walk in shower with integrated shower tap and rainfall shower head, floor to ceiling walls tiles all the way around, UPVC double glazed window to side, extractor fan, chrome heated towel rail.

Bedroom 2

11' 1" maximum x 12' 8" maximum (3.38m maximum x 3.86m maximum)

UPVC double glazed window to front, built in storage wardrobe/cupboard, radiator.

Bedroom 3

9' 2" maximum x 8' 9" (2.79m maximum x 2.67m)

UPVC double glazed window to front, double door built in wardrobes, radiator.

Family Bathroom

Cushioned lino floor, white panelled bath with whirlpool bath and mixer tap, vanity unit wash hand basin with mixer tap, walk in shower with integrated taps, low level low flush WC, chrome heated towel rail, floor to ceiling wall tiles, UPVC double glazed window to rear,





Front

Block paved drive for parking for up to 3 cars, with block paving continuing around the side of the property.

Garage

Up and over door, lighting and power.

Rear Garden

South facing, not overlooked, paved seating area, area laid to lawn with artificial grass, raised mature borders, paved seating area at top of garden too, new fencing all the way around, wood panelled and fully insulated bar with laminating flooring, lighting and power, UPVC double glazed window to side and rear plus a door (TV and optics available to remain subject to separate negotiation). Hot tub available to be included upon separate negotiation.



view this property online mannersandharrison.co.uk/Property/HAR118452



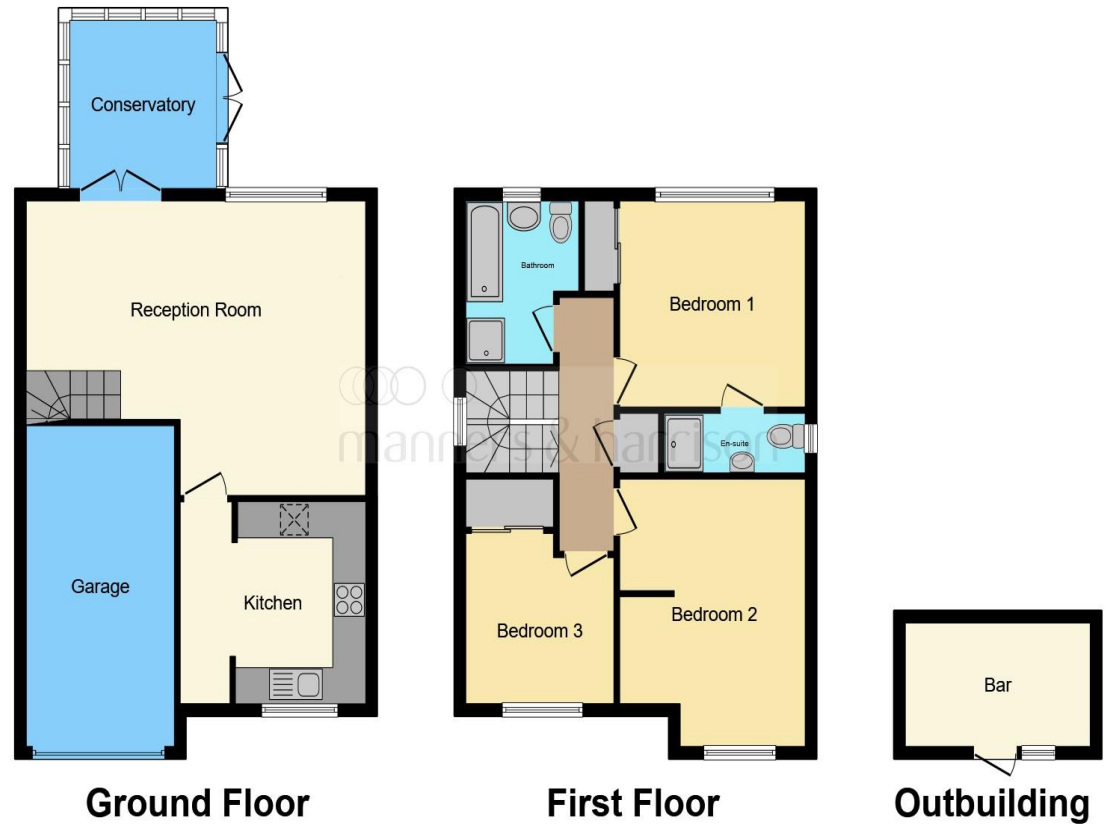
welcome to

Whin Meadows, Hartlepool

- GARAGE
- DRIVEWAY FOR SEVERAL CARS
- BAR AND SAUNA AREA
- SOUTH FACING REAR GARDEN
- BEAUTIFUL HOME

Tenure: Freehold EPC Rating: C

£210,000



This floor plan is for illustrative purposes only. It is not drawn to scale. Any measurements, floor areas (including any total floor area), openings and orientation are approximate. No details are guaranteed, they cannot be relied upon for any purpose and they do not form part of any agreement. No liability is taken for any error, omission or misstatement. A party must rely upon its own inspection(s). Powered by www.focalagent.com

view this property online mannersandharrison.co.uk/Property/HAR118452



Property Ref:
HAR118452 - 0003

1. MONEY LAUNDERING REGULATIONS Intending purchasers will be asked to produce identification documentation at a later stage and we would ask for your co-operation in order that there is no delay in agreeing the sale. 2. These particulars do not constitute part or all of an offer or contract. 3. The measurements indicated are supplied for guidance only and as such must be considered incorrect. Potential buyers are advised to recheck measurements before committing to any expense. 4. We have not tested any apparatus, equipment, fixtures or services and it is in the buyers interest to check the working condition of any appliances. 5. Where an EPC, or a Home Report (Scotland only) is held for this property, it is available for inspection at the branch by appointment. If you require a printed version of a Home Report, you will need to pay a reasonable production charge reflecting printing and other costs. 6. We are not able to offer an opinion either written or verbal on the content of these reports and this must be obtained from your legal representative. 7. Whilst we take care in preparing these reports, a buyer should ensure that his/her legal representative confirms as soon as possible all matters relating to title including the extent and boundaries of the property and other important matters before exchange of contracts.

Manners & Harrison is a trading name of Sequence (UK) Limited which is registered in England and Wales under company number 4268443, Registered Office is Cumbria House, 16-20 Hockliffe Street, Leighton Buzzard, Bedfordshire, LU7 1GN. VAT Registration Number is 500 2481 05.

manners & harrison



01429 261351



Hartlepool@mannersandharrison.co.uk



Shrewsbury House 129 York Road,
HARTLEPOOL, Durham, TS26 9DW



mannersandharrison.co.uk