



Bedale Close, HARTLEPOOL TS25 1JH

welcome to

Bedale Close, HARTLEPOOL

Ready to move into, is this beautiful and extended three bedroomed semi-detached family home which has undergone substantial improvements by the current owners. Stand out features include the stunning extended garden room area with glass roof and landscaped rear garden.

Entrance Hall

Entered via composite double glazed door to the front aspect, radiator, stairs to first floor, door leading to lounge.

Lounge

14' 10" x 14' 10" Includes under stairs area (4.52m x 4.52m Includes under stairs area)
UPVC double glazed window to front aspect, radiator, TV point.

Kitchen/ Diner

14' 9" Max x 15' 8" Max (4.50m Max x 4.78m Max)
Beautiful range of shaker style wall and base units with complementary wood effect working surfaces and matching upstands, space for fridge freezer, built in electric oven, 4 ring gas hob with matching wood effect splashback and extractor over, stainless steel sink/drainer with mixer tap, plumbing for washing machine, plumbing for dishwasher, UPVC double glazed window leading to the rear aspect, laminate flooring, two radiators.

Garden Room

6' x 8' 9" (1.83m x 2.67m)
Open to the kitchen, glass roof, UPVC double glazed window to the rear and UPVC double glazed door leading on to the rear garden.

Ground Floor W C

Pedestal wash hand basin with tiled splashback, low level low flush WC, radiator, extractor fan.

First Floor

Landing

Stairs from Hallway, radiator, UPVC double glazed window to front aspect, airing cupboard.

Bedroom 2

8' 4" x 11' 1" (2.54m x 3.38m)
UPVC double glazed window to rear, radiator.

Bedroom 3

8' 4" Max x 9' 1" Max (2.54m Max x 2.77m Max)
UPVC double glazed window to front, radiator.

Family Bathroom

Panelled bath with wet wall splashback, fitted WC and sink unit with swan neck mixer tap and storage beneath, vinyl flooring, UPVC double glazed window to rear, radiator, extractor fan.

Second Floor

Landing

Stairs from first floor landing.

Master Bedroom

12' 10" x 11' 5" Slight restricted head height (3.91m x 3.48m Slight restricted head height)
UPVC double glazed window to front, radiator.

Dressing Area

5' 1" onto robes x 5' 4" onto robes (1.55m onto robes x 1.63m onto robes)
Built in storage, radiator.

En Suite

Walk-in shower cubicle with panelled walls, pedestal wash hand basin with swan neck mixer tap, WC, skylight window, radiator, vinyl flooring, extractor fan.





Front Garden

Small lawned area, planted border and block paved walkway leading to the front door.

South Facing Rear Garden

Recently landscaped with patio, lawned area with raised planters, fence enclosed with gate to side aspect for access.

Separate Garage

In separate block opposite the property, up and over door and space for parking in front.



view this property online mannersandharrison.co.uk/Property/HAR117792



welcome to

Bedale Close, HARTLEPOOL

- SPRAWLED OVER 3 FLOORS
- MODERN KITCHEN AND FAMILY BATHROOM
- MASTER SUITE WITH DRESSING AREA AND EN-SUITE
- FRONT AND REAR GARDENS
- GARAGE AND CAR PARKING

Tenure: Freehold EPC Rating: C

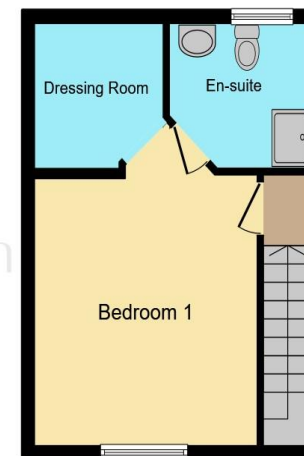
£167,500



Ground Floor



First Floor



Second Floor

This floorplan is for illustrative purposes only. It is not drawn to scale. Any measurements, floor areas (including any total floor area), openings and orientation are approximate. No details are guaranteed, they should not be relied upon for any purpose and do not form any part of any agreement. No liability is taken for any error, omission or misstatement. A party must rely on its own inspection(s). Plan produced for Manners & Harrison. Powered by www.focalagent.com

view this property online mannersandharrison.co.uk/Property/HAR117792



Property Ref:
HAR117792 - 0003

1. MONEY LAUNDERING REGULATIONS Intending purchasers will be asked to produce identification documentation at a later stage and we would ask for your co-operation in order that there is no delay in agreeing the sale. 2. These particulars do not constitute part or all of an offer or contract. 3. The measurements indicated are supplied for guidance only and as such must be considered incorrect. Potential buyers are advised to recheck measurements before committing to any expense. 4. We have not tested any apparatus, equipment, fixtures or services and it is in the buyers interest to check the working condition of any appliances. 5. Where an EPC, or a Home Report (Scotland only) is held for this property, it is available for inspection at the branch by appointment. If you require a printed version of a Home Report, you will need to pay a reasonable production charge reflecting printing and other costs. 6. We are not able to offer an opinion either written or verbal on the content of these reports and this must be obtained from your legal representative. 7. Whilst we take care in preparing these reports, a buyer should ensure that his/her legal representative confirms as soon as possible all matters relating to title including the extent and boundaries of the property and other important matters before exchange of contracts.

Manners & Harrison is a trading name of Sequence (UK) Limited which is registered in England and Wales under company number 4268443, Registered Office is Cumbria House, 16-20 Hockliffe Street, Leighton Buzzard, Bedfordshire, LU7 1GN. VAT Registration Number is 500 2481 05.


manners & harrison



01429 261351



Hartlepool@mannersandharrison.co.uk



Shrewsbury House 129 York Road,
HARTLEPOOL, Durham, TS26 9DW



mannersandharrison.co.uk