



Wainwright Close, HARTLEPOOL TS25 1XB

welcome to

Wainwright Close, HARTLEPOOL

A significantly extended 4 Bedroomed Semi Detached house available for sale with No Onward Chain.

Entrance Porch

accessed via UPVC Double Glazed door to side aspect, feature window to front, inner door giving access to Lounge.

Lounge

12' 10" (max) x 17' 5" (max) (3.91m (max) x 5.31m (max))
UPVC Double Glazed boxed bay window to front aspect, double radiator, coved cornicing, staircase to First Floor.

Kitchen/ Diner

19' 8" x 9' 2" (5.99m x 2.79m)
Double Glazed window to rear aspect, French doors leading to rear garden, fitted with a combination of wall and base units with complementing working surfaces incorporating sink/drain unit, built in electric oven with 4 ring gas hob and extractor hood over, recess and plumbing for dishwasher, radiator, coved cornicing.

Utility

9' 6" (max) x 6' (max) (2.90m (max) x 1.83m (max))
wall mounted gas central heating boiler, recess and plumbing for washing machine and dryer, door to garage, door to rear garden.

Guest Wc

UPVC Double Glazed window to side aspect, low level low flush WC, pedestal wash hand basin.

First Floor

Landing

loft void access.

Bedroom 1

9' 5" x 13' 1" (excluding wardrobes) (2.87m x 3.99m

(excluding wardrobes))

UPVC Double Glazed window to front aspect, radiator, built in wardrobes.

En Suite

fitted with a three piece suite comprising shower cubicle, low level low flush WC, pedestal wash hand basin.

Bedroom 2

12' 9" x 9' 1" (3.89m x 2.77m)
(measurements excluding built in storage cupboard)
UPVC Double Glazed window to rear aspect, radiator.

Bedroom 3

12' 4" x 8' 9" (3.76m x 2.67m)
UPVC Double Glazed window to rear aspect giving sea views, radiator.

Bedroom 4

9' 2" x 8' 3" (2.79m x 2.51m)
UPVC Double Glazed window to front aspect, radiator.

Family Bathroom

fitted with a four piece white suite comprising shower cubicle with electric shower, corner bath, vanity style wash hand basin and low level low flush WC, UPVC Double Glazed opaque window to side aspect, coved cornicing, chrome heated towel rail.



Externally

Front Garden

low maintenance with off street parking leading to Garage.

Enclosed Rear Garden

spacious having previously bought additional land.



view this property online mannersandharrison.co.uk/Property/HAR117148



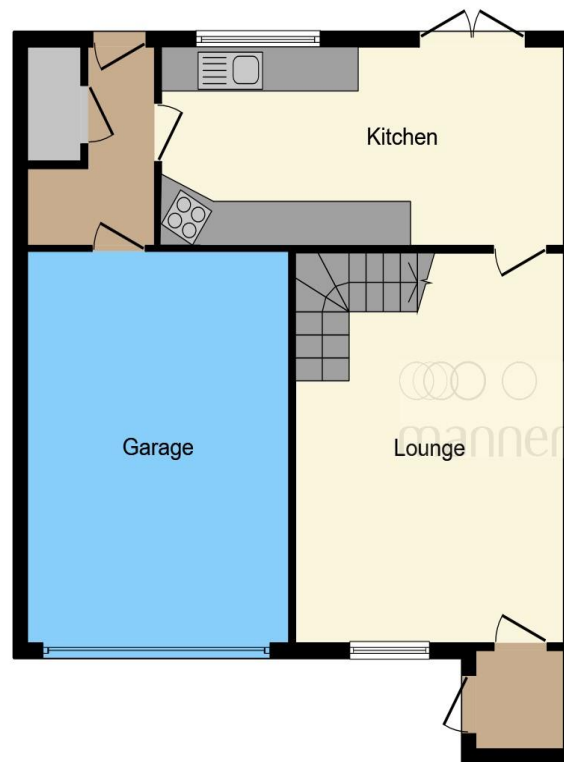
welcome to

Wainwright Close, HARTLEPOOL

- NO ONWARD CHAIN
- EXTENDED 4 BEDROOMED SEMI DETACHED HOUSE
- UTILITY
- EN SUITE
- CLOSE TO BEACH

Tenure: Freehold EPC Rating: E

£185,000



Ground Floor



First Floor

This floorplan is for illustrative purposes only. It is not drawn to scale. Any measurements, floor areas (including any total floor area), openings and orientation are approximate. No details are guaranteed, they should not be relied upon for any purpose and do not form any part of any agreement. No liability is taken for any error, omission or misstatement. A party must rely on its own inspection(s). Plan produced for Manners & Harrison. Powered by www.focalagent.com

view this property online mannersandharrison.co.uk/Property/HAR117148



Property Ref:
HAR117148 - 0004

1. MONEY LAUNDERING REGULATIONS Intending purchasers will be asked to produce identification documentation at a later stage and we would ask for your co-operation in order that there is no delay in agreeing the sale. 2. These particulars do not constitute part or all of an offer or contract. 3. The measurements indicated are supplied for guidance only and as such must be considered incorrect. Potential buyers are advised to recheck measurements before committing to any expense. 4. We have not tested any apparatus, equipment, fixtures or services and it is in the buyers interest to check the working condition of any appliances. 5. Where an EPC, or a Home Report (Scotland only) is held for this property, it is available for inspection at the branch by appointment. If you require a printed version of a Home Report, you will need to pay a reasonable production charge reflecting printing and other costs. 6. We are not able to offer an opinion either written or verbal on the content of these reports and this must be obtained from your legal representative. 7. Whilst we take care in preparing these reports, a buyer should ensure that his/her legal representative confirms as soon as possible all matters relating to title including the extent and boundaries of the property and other important matters before exchange of contracts.

Manners & Harrison is a trading name of Sequence (UK) Limited which is registered in England and Wales under company number 4268443, Registered Office is Cumbria House, 16-20 Hockliffe Street, Leighton Buzzard, Bedfordshire, LU7 1GN. VAT Registration Number is 500 2481 05.

manners & harrison



01429 261351



Hartlepool@mannersandharrison.co.uk



Shrewsbury House 129 York Road,
HARTLEPOOL, Durham, TS26 9DW



mannersandharrison.co.uk